

[Manuals.plus](#) /

> [R&T](#) /

> R&T 3-Inch Dual Flush Valve with Top Push Button Toilet Repair Kit Instruction Manual

R&T A2422M

R&T 3-Inch Dual Flush Valve with Top Push Button Toilet Repair Kit

Model: A2422M

Brand: R&T

1. PRODUCT OVERVIEW

The R&T 3-Inch Dual Flush Valve is designed to enhance your toilet's performance by fixing common leaks and providing water-saving dual flush functionality. This kit is a replacement for 3-inch drain outlet dual flush valves in two-piece toilets.



Figure 1: R&T 3-Inch Dual Flush Valve with Top Push Button. This image displays the main components of the repair kit, including the flush valve assembly and the top-mounted push button mechanism.

Key Features:

- **Dual Flush Capability:** Offers both full flush for powerful cleaning and half flush for water conservation.
- **Easy Installation:** Designed for tool-free installation.
- **Adjustable Overflow Tube:** Accommodates various tank heights (11.33" - 15.27").
- **Water Level Adjusters:** Independent adjusters for half and full flush water levels.
- **Durable Construction:** Made from enduring chrome ABS material.
- **Leak Elimination:** Addresses issues caused by worn-out flappers or faulty chains.

2. COMPATIBILITY AND SAFETY INFORMATION

Compatibility:

This R&T dual flush valve is specifically designed for **two-piece toilets** with a **3-inch drain outlet** and a **top push button**. It is not compatible with one-piece toilets or toilets with different drain outlet sizes (e.g., 2-inch). Please verify your toilet's specifications before installation.

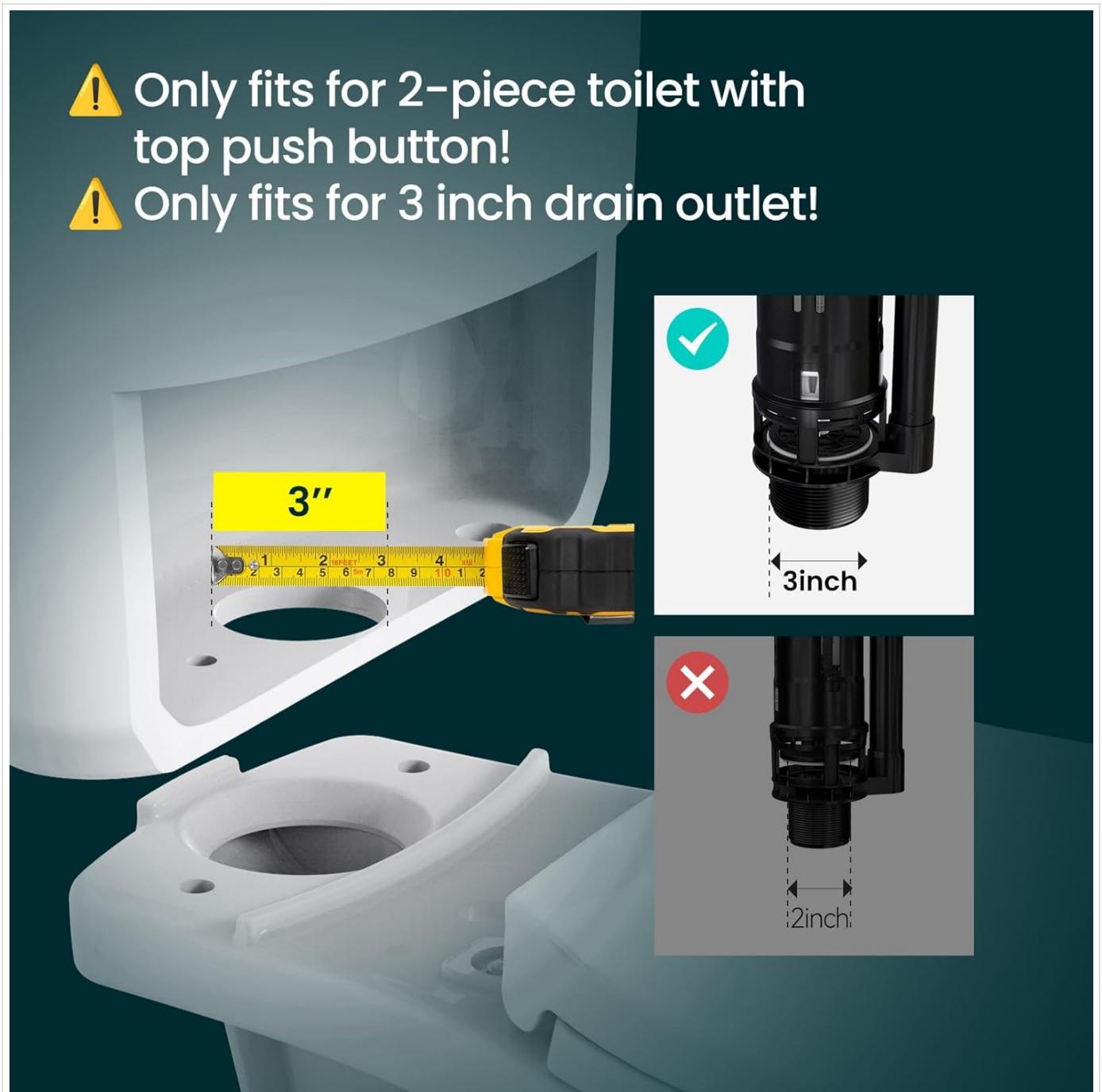


Figure 2: Drain Outlet Measurement Guide. This image illustrates how to measure the toilet's drain outlet to ensure compatibility with the 3-inch flush valve.

Only fits for 2-piece toilet with top push button!



Figure 3: Toilet Type and Button Compatibility. This image clarifies that the product is suitable for two-piece toilets with a top push button and a 3-inch drain outlet.

Safety Precautions:

- Always turn off the water supply to the toilet before beginning any installation or maintenance.
- Drain the toilet tank completely before removing old components.
- Wear appropriate personal protective equipment, such as gloves, if necessary.
- Keep small parts away from children to prevent choking hazards.

3. COMPONENTS INCLUDED

The R&T 3-Inch Dual Flush Valve kit includes the following components:

- TOILET FLUSH VALVE (main assembly)
- Top Push Button

Note: Fill valve, tank-to-bowl gasket, and bolts are sold separately and are not included in this kit.

4. INSTALLATION INSTRUCTIONS

Follow these steps for a successful installation of your R&T 3-Inch Dual Flush Valve. No special tools are required for this process.

1. **Turn off Water Supply and Drain Tank:** Locate the water shut-off valve behind or near the toilet and turn it clockwise until the water flow stops. Flush the toilet to drain the tank completely.



Figure 4: Initial Setup. This image shows turning off the water supply and draining the toilet tank.

2. **Insert Tank-to-Bowl Gasket (if replacing):** If you are replacing the tank-to-bowl gasket (not included), insert it onto the flush valve's outlet bottom. Ensure a snug fit.

Easy Installation

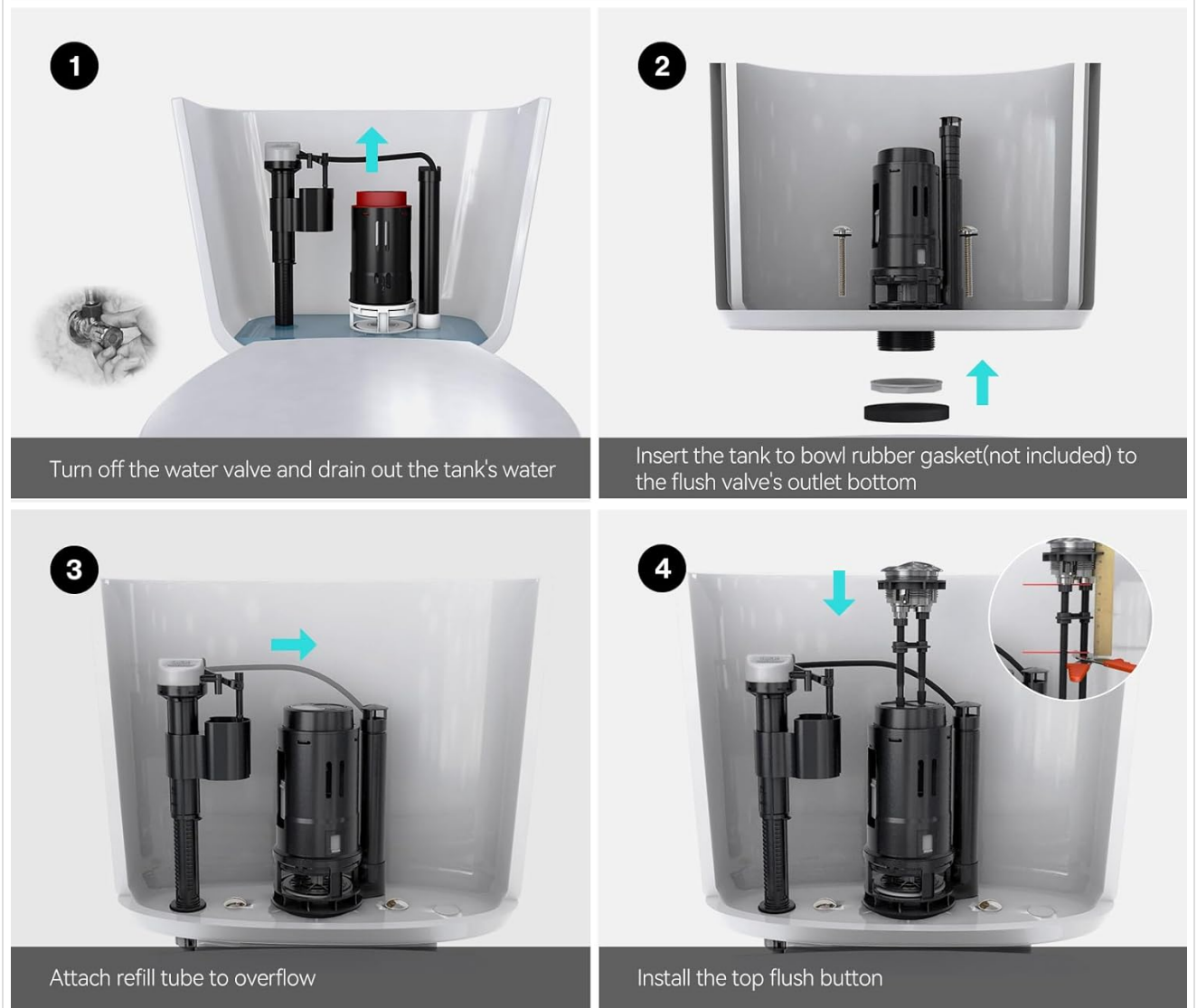


Figure 5: Gasket Placement. This image illustrates the placement of the tank-to-bowl gasket (if applicable) onto the flush valve.

- 3. Attach Refill Tube to Overflow:** Connect the refill tube from your fill valve (sold separately) to the overflow pipe of the new flush valve. Ensure it is securely attached.

Easy Installation

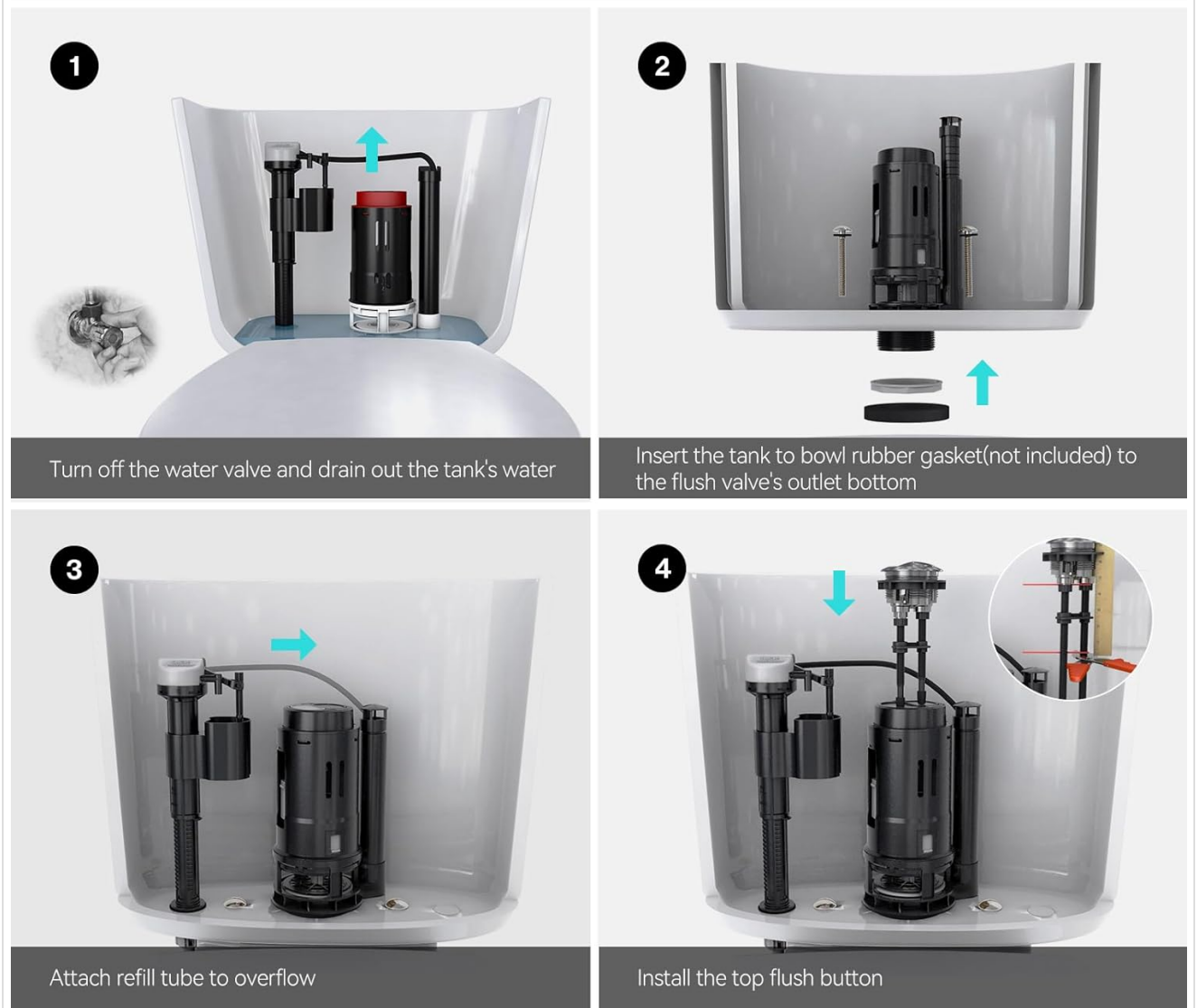


Figure 6: Refill Tube Connection. This image demonstrates attaching the refill tube to the overflow pipe.

- 4. Install the Top Flush Button:** Place the top push button mechanism into the designated hole on the toilet tank lid. Connect the button rods to the flush valve levers. Adjust the length of the rods as needed to ensure proper activation of the flush valve.

Easy Installation



Figure 7: Button Installation. This image shows the final step of installing the top flush button and connecting its rods to the flush valve.

After installation, turn the water supply back on slowly and check for any leaks. Allow the tank to fill and test the dual flush functionality.

5. OPERATING INSTRUCTIONS

The R&T Dual Flush Valve provides two flushing options to optimize water usage:

- **Half Flush:** Press the smaller button or the half-flush side of the dual button. This uses less water for liquid waste, saving water.
- **Full Flush:** Press the larger button or the full-flush side of the dual button. This uses the full tank of water for solid waste, ensuring a powerful flush.

Adjusting Water Levels:

The flush valve features adjustable components to fine-tune water consumption for both half and full flushes. Refer to the diagram below for the location of these adjusters.



Figure 8: Adjustment Features. This image highlights the half adjusting float and full adjustor for controlling water levels, as well as the chlorine-resistant flapper.

Adjust the float and adjustor mechanisms to achieve your desired water levels for optimal performance and water savings. Experiment with settings to find the balance that works best for your toilet.

Save Water & Money

Adjustable water volume on full/half flush



Figure 9: Water Saving Benefits. This image visually represents how the dual flush system can save water by offering both full and half flush options.

6. MAINTENANCE

The R&T Dual Flush Valve is designed for durability and features a chlorine-resistant flapper for harsh water environments, ensuring long-lasting, leak-free performance.

- **Regular Cleaning:** Periodically inspect the flush valve and surrounding components for mineral buildup or debris. Clean with a soft brush and mild, non-abrasive cleaner if necessary.
- **Check for Leaks:** If you notice a continuous running toilet or a drop in water level, inspect the flush valve for proper seating and any obstructions.
- **Avoid Harsh Chemicals:** Do not use in-tank drop-in cleaners that contain harsh chemicals, as these can damage rubber and plastic components over time.

7. TROUBLESHOOTING

If you encounter issues with your R&T Dual Flush Valve, consider the following common troubleshooting steps:

Problem	Possible Cause	Solution
Toilet runs continuously or refills slowly.	Worn-out flapper, faulty flapper chain, or improper seating of the flush valve.	Ensure the flush valve is seated correctly and no debris is preventing a seal. Check the flapper for wear or damage; replace if necessary. Verify the flapper chain is not too tight or too loose.
Weak flush.	Insufficient water level in the tank or obstruction in the flush valve.	Adjust the water level in the tank using the fill valve. Check the flush valve for any blockages.
Dual flush buttons not working correctly.	Button rods are not properly aligned or adjusted.	Re-adjust the length of the button rods to ensure they properly engage the flush valve levers.

If problems persist after attempting these solutions, please contact R&T customer support for further assistance.

8. SPECIFICATIONS

Attribute	Detail
Brand	R&T
Model Number	A2422M
Material	Acrylonitrile Butadiene Styrene (ABS)
Exterior Finish	ABS, Chrome
Item Dimensions (L x W x H)	11 x 7 x 4 inches
Item Weight	11.2 ounces
Inlet Connection Size	3 Inches
Outlet Connection Size	3 Inches
Number of Ports	1
Included Components	TOILET FLUSH VALVE
Manufacturer	Xiamen R&T Plumbing Technology Co.,Ltd.
First Available Date	December 27, 2020

9. WARRANTY AND SUPPORT

R&T has been serving the U.S. market with quality and reliable toilet repair kits for over 20 years, since 2002.

For any questions, technical assistance, or support regarding your R&T Dual Flush Valve, please contact our dedicated customer support team. You can find more information and contact details on the official R&T store page:

[Visit the R&T Store on Amazon](#)

