

## comiso E6

# COMISO E6 Wireless Earbuds User Manual

Model: E6 | Brand: comiso

## INTRODUCTION

Thank you for choosing the COMISO E6 Wireless Earbuds. These earbuds are designed to provide a high-quality audio experience with features tailored for active lifestyles, including a secure fit, long battery life, and IPX7 waterproof rating. This manual will guide you through the setup, operation, and maintenance of your new earbuds.

## PACKAGE CONTENTS

Please ensure all items are present in your package:

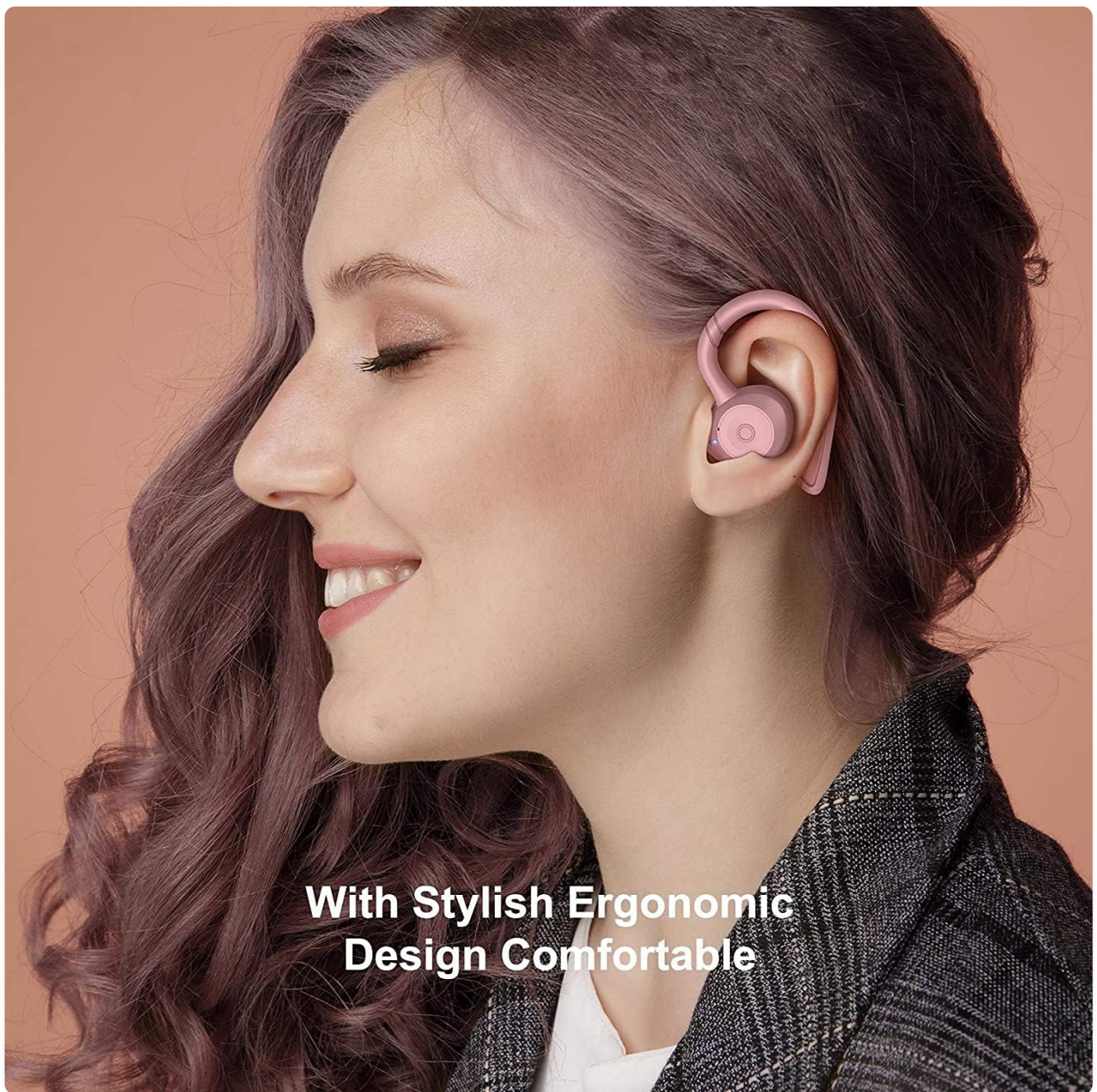
- COMISO E6 Wireless Earbuds (Left and Right)
- Wireless Charging Case
- USB Charging Cable
- Ear Cushions (various sizes)
- User Manual (this document)



Image: The COMISO E6 Wireless Earbuds in their charging case, showcasing the pink color and ergonomic design.

## PRODUCT OVERVIEW

The COMISO E6 earbuds feature a compact design with integrated ear hooks for a secure fit during physical activity. Each earbud is equipped with a multi-function button and indicator light.



**With Stylish Ergonomic  
Design Comfortable**

Image: A person wearing the COMISO E6 earbud, demonstrating its ergonomic design and comfortable fit.

### **Wearing the Earbuds**

The earbuds can be worn in two ways: with the ear hooks for secure sports use, or without for a more discreet fit. To wear with ear hooks, gently place the earbud into your ear canal and loop the hook over the top of your ear. Ensure a snug fit for optimal sound quality and stability.



# 2

## Different Ways to Wear



Image: Illustration showing two methods of wearing the earbuds: with the ear hook for active use and without for a more compact fit.

## SETUP GUIDE

### 1. Charging the Earbuds and Case

Before first use, fully charge the charging case and earbuds. Place the earbuds into the charging case. Connect the USB charging cable to the charging case and a power source. The indicator lights on the case will show charging status. A full charge takes approximately 3 hours for the case.

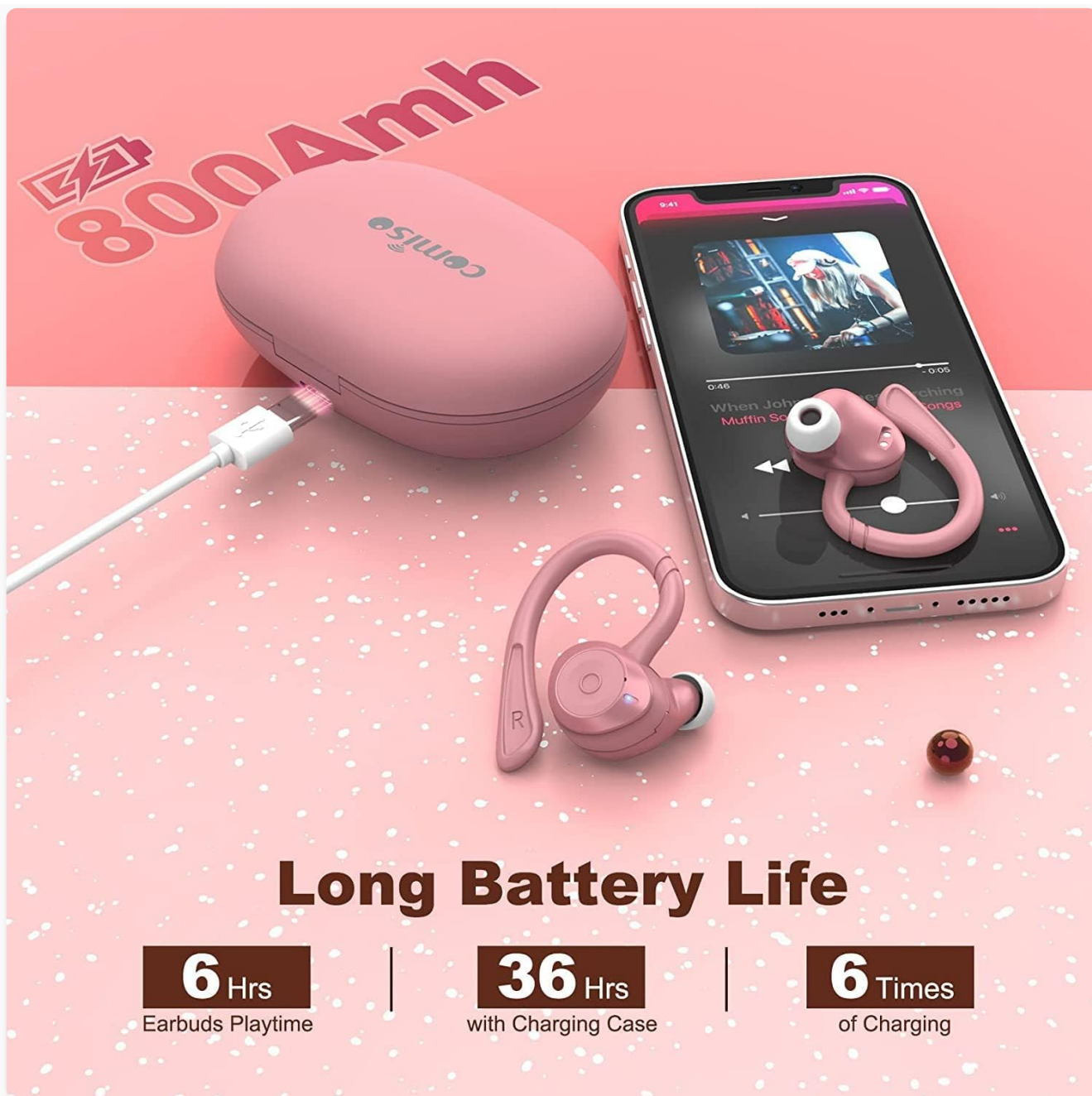


Image: The COMISO E6 charging case connected via USB cable, illustrating the long battery life capabilities of the earbuds and case.

## 2. Pairing with Your Device (One-Step Auto Pairing)

1. Open the charging case and remove both COMISO E6 earbuds. They will automatically power on and attempt to pair with each other.
2. On your smartphone or Bluetooth-enabled device, go to the Bluetooth settings.
3. Search for "COMISO E6" in the list of available devices and select it to connect.
4. Once connected, you will hear a confirmation tone, and the earbud indicator lights will turn off.

After the initial successful connection, the earbuds will automatically connect to the last paired device when removed from the case.

## OPERATING INSTRUCTIONS

### Basic Controls

The COMISO E6 earbuds feature intuitive touch controls. Refer to the diagram below for common functions:

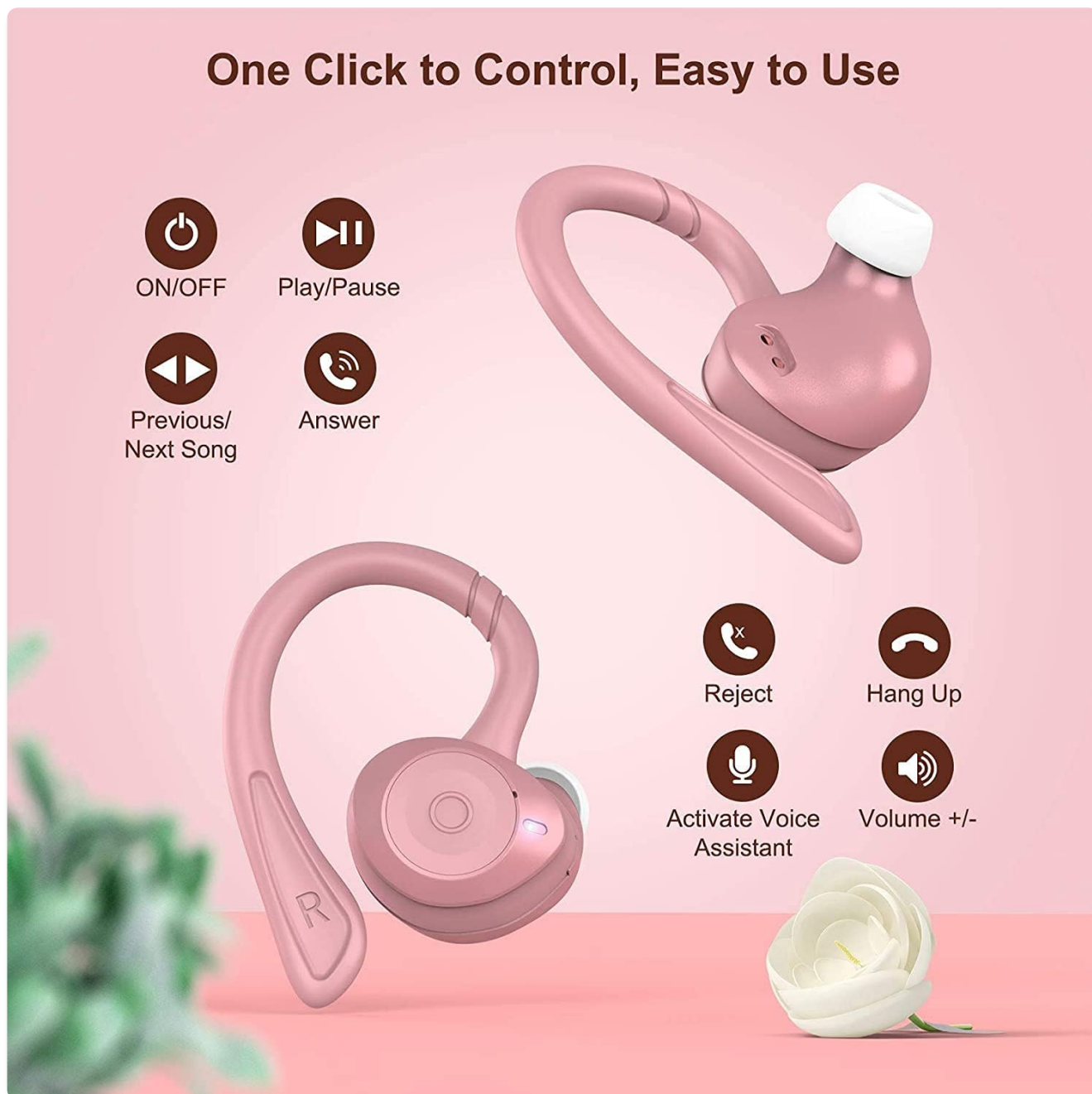


Image: A visual guide to the one-click control functions of the COMISO E6 earbuds, including power, play/pause, track control, call management, and voice assistant activation.

- **Power ON/OFF:** Automatically powers on when removed from case, off when placed back.
- **Play/Pause:** Single tap on either earbud.
- **Next Song:** Double tap the Right earbud.
- **Previous Song:** Double tap the Left earbud.
- **Answer/End Call:** Single tap on either earbud during an incoming call.
- **Reject Call:** Press and hold either earbud for 2 seconds during an incoming call.
- **Activate Voice Assistant:** Triple tap on either earbud.
- **Volume Control:** Use your connected device to adjust volume.

### Stereo and Mono Mode

The COMISO E6 earbuds support both stereo and mono modes, allowing flexible usage.

- **Stereo Mode:** Use both earbuds for a full, immersive audio experience.

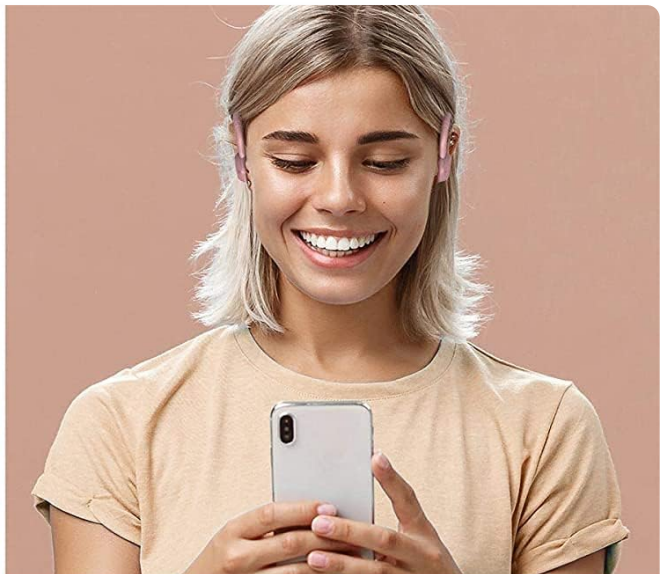


- **Mono Mode:** Use only one earbud (left or right) while the other is in the charging case. This is ideal for calls or when you need to be aware of your surroundings. Simply remove one earbud, and it will automatically connect.



### **Stereo Mode**

Enjoy Full, High-Def Stereo Sound With A Small Body



### **Mono Mode**

Use The Single Earbud Enjoy Longer Playtime



### **Share Mode**

Share Same Music by Share Earbud With Your Friend

Image: Depiction of the earbuds' versatile modes: Stereo for full sound, Mono for single earbud use, and Share Mode for sharing audio with another person.

## **MAINTENANCE**

### **Cleaning**

Regularly clean your earbuds and charging case to ensure optimal performance and hygiene. Use a soft, dry, lint-free cloth. For ear tips, you may gently wipe them with a slightly damp cloth and mild soap, then dry thoroughly before reattaching.

### **Water Resistance (IPX7)**

The COMISO E6 earbuds are IPX7 waterproof, meaning they can withstand submersion in up to 1 meter of water for 30 minutes. This makes them suitable for workouts and outdoor activities in light rain or sweat. However, they are not designed for swimming or prolonged submersion. Always ensure the charging port on the case is dry before

charging.



# IPX7 Waterproof

Nothing will stop you

  
Rainy Day

  
Sweat Resistance

  
Splashproof

Image: The COMISO E6 earbuds with water droplets, illustrating their IPX7 waterproof rating for rainy days, sweat resistance, and splashproof protection.

## Storage

When not in use, store the earbuds in their charging case to protect them and keep them charged. Store the case in a cool, dry place away from extreme temperatures and direct sunlight.

## TROUBLESHOOTING

Problem	Possible Solution
---------	-------------------



Problem	Possible Solution
Earbuds not pairing with each other.	Ensure both earbuds are fully charged. Place them back in the case, close it, wait a few seconds, then remove them again. If issues persist, try resetting them (refer to specific reset instructions if available in a full manual, otherwise, this is a general step).
Earbuds not connecting to device.	Ensure Bluetooth is enabled on your device. Forget "COMISO E6" from your device's Bluetooth list and try pairing again. Ensure earbuds are charged and out of the case.
No sound or low volume.	Check the volume level on both your device and the earbuds. Ensure earbuds are properly seated in your ears. Try cleaning the ear tips and speaker mesh.
Charging case not charging.	Ensure the USB cable is securely connected to both the case and the power source. Try a different USB cable or power adapter.
Microphone not working during calls.	Ensure the earbuds are properly connected and selected as the audio input device on your phone. Check for any obstructions on the microphone opening.

## SPECIFICATIONS

Feature	Detail
Model Name	E6
Connectivity Technology	Bluetooth 5.1
Wireless Communication Technology	True Wireless, Bluetooth
Water Resistance Level	IPX7 Waterproof
Earbuds Playtime	6 Hours
Total Playtime (with Charging Case)	Up to 36 Hours
Charging Case Recharges	6 Times
Charging Time	3 Hours (for case)
Frequency Range	20 Hz - 20,000 Hz
Bluetooth Range	10 Meters
Control Type	Touch, Media Control
Microphone	Built-in (Noise Cancellation)
Material	Plastic, Polycarbonate (PC), Aluminum, Stainless Steel

Feature	Detail
Item Weight (Earbuds)	0.19 Kilograms (total)
Carrying Case Weight	20 Grams
Product Dimensions	3.6 x 2.3 x 1.2 inches






### WARRANTY AND SUPPORT

COMISO products come with a standard manufacturer's warranty. For detailed warranty information, please refer to the warranty card included in your product packaging or visit the official COMISO website.

If you encounter any issues or have questions regarding your COMISO E6 Wireless Earbuds, please contact COMISO customer support through the retailer where you purchased the product or via the contact information provided on the official COMISO website.

You can also visit the [COMISO Store on Amazon](#) for more information and support resources.

### Related Documents - E6

	<a href="#">COMISO C15 IPX7 Waterproof Wireless Speaker User Manual</a> Comprehensive user manual for the COMISO C15 IPX7 Waterproof Wireless Speaker (Model 96110). Learn about its features, functions, Bluetooth connectivity, TWS pairing, light modes, specifications, safety guidelines, and troubleshooting tips.
	<a href="#">COMISO C15 Wireless Waterproof Speaker User Manual</a> Comprehensive user manual for the COMISO C15 Wireless Waterproof Speaker, detailing features, operation, safety instructions, and troubleshooting.
	<a href="#">Ear Dance User Manual: Setup, Pairing, and Translation Features</a> Comprehensive user manual for Ear Dance translation headphones, guiding users through preparation, device pairing, authorization, and the intelligent translation functions across multiple languages.
	<a href="#">COMISO C17PRO Wireless Bluetooth Speaker: User Guide and Specifications</a> Comprehensive guide for the COMISO C17PRO Wireless Bluetooth Speaker, covering setup, TWS pairing, troubleshooting, specifications, and warranty information.
	<a href="#">Beoplay E6 Motion User Guide</a> User guide for the Bang & Olufsen Beoplay E6 Motion wireless earphones, covering setup, charging, pairing, controls, and troubleshooting.

## [Countryman Associates Pricelist - Professional Microphones and Audio Accessories](#)

Explore the comprehensive Countryman Associates pricelist for professional microphones, headsets, earsets, lavaliers, instrument microphones, direct boxes, and accessories. Find detailed product information and pricing for audio solutions.