

## Manuals+

[Q & A](#) | [Deep Search](#) | [Upload](#)

manuals.plus /

› [JBL](#) /

› [JBL Tune 510BT Wireless Headphones User Manual](#)

**JBL JBLT510BTBLK**

# JBL Tune 510BT Wireless Headphones User Manual

Model: JBLT510BTBLK

## INTRODUCTION

---

Thank you for choosing the JBL Tune 510BT On-Ear Wireless Headphones. This manual provides essential information to help you set up, operate, maintain, and troubleshoot your headphones, ensuring you get the best audio experience.

The JBL Tune 510BT headphones deliver renowned JBL Pure Bass Sound, offering up to 40 hours of playtime on a single charge. With quick charging capabilities, Bluetooth 5.0 connectivity, and multi-point connection, these headphones are designed for convenience and high-quality audio on the go.

## WHAT'S IN THE BOX

---

Please check the package contents to ensure all items are present:

- 1 x JBL Tune 510BT Headphones
- 1 x USB-C Charging Cable
- 1 x Warranty/Warning Card
- 1 x Quick Start Guide (QSG)

## PRODUCT OVERVIEW

---

Familiarize yourself with the components and controls of your JBL Tune 510BT headphones.



Image: The JBL Tune 510BT headphones in black, showcasing their sleek, on-ear design.



Image: A close-up view of the left and right earcups, indicating proper wearing orientation.

## Controls

The controls are conveniently located on the earcup:

- **Power Button:** Used for powering on/off and initiating Bluetooth pairing.
- **Volume Up/Down Buttons:** Adjusts the audio volume.
- **Multi-function Button:** Controls music playback (play/pause, skip tracks), manages calls (answer/end), and activates voice assistant.
- **USB-C Port:** For charging the headphones.
- **Microphone:** For hands-free calls and voice assistant commands.

## SETUP

---

### Charging the Headphones

Before first use, fully charge your headphones. A full charge takes approximately 2 hours.

1. Connect the supplied USB-C charging cable to the USB-C port on the headphone earcup.
2. Connect the other end of the cable to a USB power adapter (not included) or a computer's USB port.
3. The LED indicator on the headphone will show charging status. It will turn off or change color when fully charged.



Image: Visual representation of the JBL Tune 510BT's impressive battery life and quick charge feature, highlighting 40 hours of playtime and 5 minutes of charging providing 2 hours of audio.

**Quick Charge:** A 5-minute charge provides up to 2 hours of playtime.

## Powering On/Off

- **To Power On:** Press and hold the Power button for a few seconds until the LED indicator lights up.
- **To Power Off:** Press and hold the Power button for a few seconds until the LED indicator turns off.

## Bluetooth Pairing

### Initial Pairing:

1. Ensure the headphones are powered off.
2. Press and hold the Power button for approximately 5 seconds until the LED indicator flashes blue, indicating pairing mode.
3. On your Bluetooth device (smartphone, tablet, computer), enable Bluetooth and search for available devices.
4. Select "JBL Tune 510BT" from the list of devices.
5. Once connected, the LED indicator will turn solid blue.

### Dual Pairing (Multi-Point Connection):

The JBL Tune 510BT supports multi-point connection, allowing you to connect to two Bluetooth devices simultaneously. This enables seamless switching between devices, for example, from watching a video on your tablet to answering a call on your phone.

1. Connect the headphones to your first device as described in "Initial Pairing".
2. Disconnect Bluetooth from the first device temporarily.
3. Put the headphones back into pairing mode (press and hold Power button until LED flashes blue).

4. Connect the headphones to your second device.
5. Reconnect Bluetooth on your first device. The headphones should now be connected to both devices.

## OPERATING INSTRUCTIONS

---

### Music Playback

- **Play/Pause:** Press the Multi-function button once.
- **Next Track:** Double-press the Multi-function button.
- **Previous Track:** Triple-press the Multi-function button.
- **Volume Up:** Press the Volume Up button.
- **Volume Down:** Press the Volume Down button.

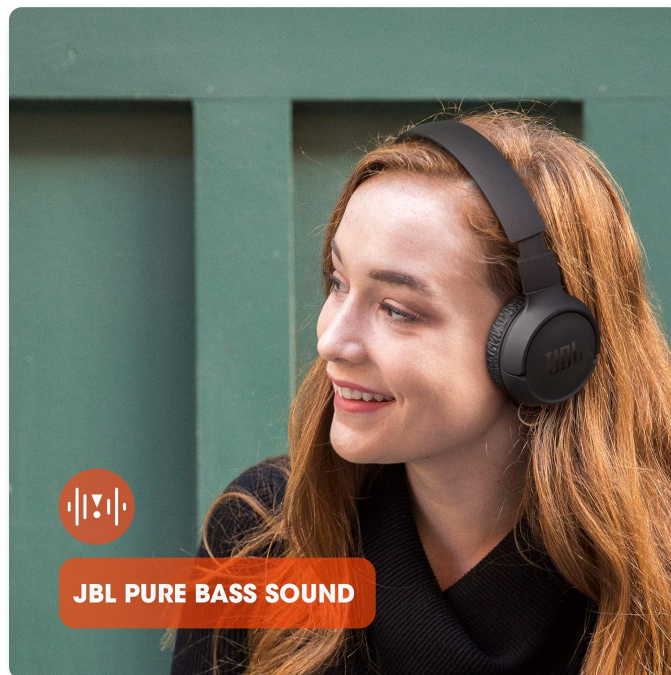


Image: The JBL Tune 510BT headphones delivering their signature Pure Bass Sound, as experienced by a user.

### Call Management

Manage your calls directly from the headphone controls:

- **Answer/End Call:** Press the Multi-function button once.
- **Reject Call:** Press and hold the Multi-function button for 2 seconds.
- **Switch Between Calls:** During a call, double-press the Multi-function button to switch to an incoming call or between active calls.

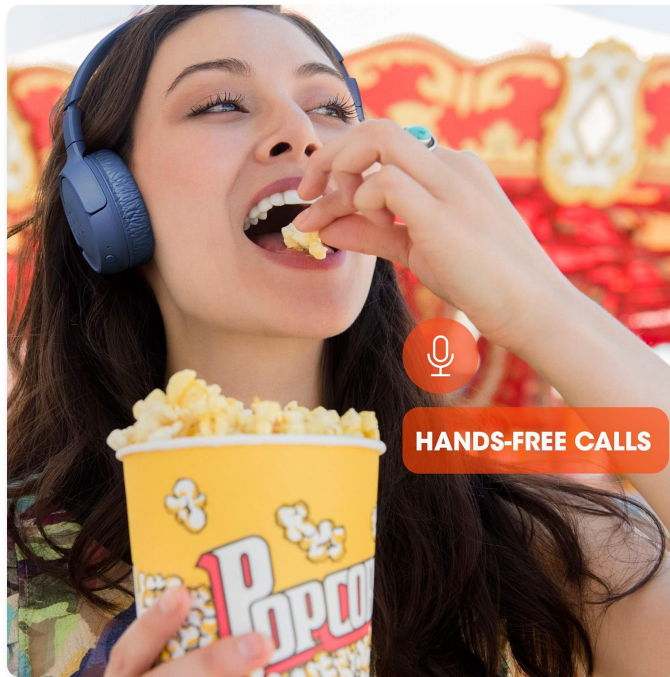


Image: The convenience of hands-free calling with the JBL Tune 510BT headphones, allowing users to multitask.

## Voice Assistant Integration

Access your device's voice assistant (Siri, Google Assistant, etc.) with ease:

- **Activate Voice Assistant:** Press and hold the Multi-function button for 2 seconds.

## MAINTENANCE

---

### Cleaning

To maintain the condition and hygiene of your headphones:

- Wipe the earcups and headband with a soft, dry, lint-free cloth.
- Do not use abrasive cleaners, alcohol, or chemical solvents.
- Avoid getting moisture into any openings. The headphones are not water resistant.

### Storage

When not in use, store your headphones properly to prevent damage:

- Store the headphones in a cool, dry place, away from direct sunlight and extreme temperatures.
- The JBL Tune 510BT headphones feature a foldable design for easy storage and portability.



Image: The JBL Tune 510BT headphones folded flat, demonstrating their compact design for convenient storage and travel.

## Battery Care

- To prolong battery life, avoid fully discharging the battery frequently.
- Charge the headphones regularly, even if not used for extended periods.

## TROUBLESHOOTING

If you encounter issues with your JBL Tune 510BT headphones, refer to the following common problems and solutions:

Problem	Possible Cause	Solution
Headphones do not power on.	Low battery.	Charge the headphones fully.
Cannot pair with Bluetooth device.	Headphones not in pairing mode; Bluetooth off on device; device out of range.	Ensure headphones are in pairing mode (flashing blue LED). Turn on Bluetooth on your device. Move device closer to headphones.
No sound or low volume.	Volume too low; headphones not connected; incorrect audio output selected.	Increase volume on headphones and device. Ensure headphones are connected. Check audio output settings on your device.
Sound distortion.	Device too far; interference.	Move closer to the Bluetooth device. Avoid strong electromagnetic interference.
Voice assistant not responding.	Feature not enabled on device; incorrect button press.	Ensure voice assistant is enabled on your connected device. Press and hold the Multi-function button for 2 seconds.

## SPECIFICATIONS

Detailed technical specifications for the JBL Tune 510BT headphones:

Feature	Specification
Model Name	Tune
Model Number	JBLT510BTBLK
Connectivity Technology	Bluetooth 5.0
Wireless Communication Technology	Bluetooth
Frequency Range	20 Hz - 20 kHz
Impedance	32 Ohm
Sensitivity	103 dB
Battery Type	Lithium Ion
Charging Time	2 Hours (Full Charge)
Playtime	Up to 40 Hours
Item Weight	160 Grams
Product Dimensions	27 x 23 x 26 cm
Water Resistance Level	Not Water Resistant
Control Type	Call Control, Volume Control, Media Control
Manufacturer	JBL
Country of Origin	China

## WARRANTY AND SUPPORT

Your JBL Tune 510BT headphones come with a warranty. Please refer to the 'Warranty/Warning' card included in your package for detailed terms and conditions, including warranty period and coverage. For further assistance, technical support, or service inquiries, please visit the official JBL support website or contact their customer service as indicated in the product documentation or on the JBL website.

© 2024 JBL. All rights reserved.