

[Manuals.plus](#) /

› [CONTEC](#) /

› CONTEC CMS50M Fingertip Pulse Oximeter Instruction Manual

CONTEC CMS50M

CONTEC CMS50M Fingertip Pulse Oximeter Instruction Manual

1. PRODUCT OVERVIEW

The CONTEC CMS50M Fingertip Pulse Oximeter is designed for non-invasive spot-check measurement of functional oxygen saturation of arterial hemoglobin (SpO₂) and pulse rate (PR). It is suitable for use in sports and aviation, but not intended for medical diagnosis or treatment.



Image: CONTEC CMS50M Pulse Oximeter highlighting its key features.

- **Accurate & Fast Results:** Measures SpO₂ (blood oxygen saturation), pulse rate, and displays a bar graph and pulse strength results on a digital LED display.
- **Portable & Easy To Use:** Lightweight (approximately 50g with batteries). Simply place your finger in the testing chamber for results.
- **Comfortable & Long Battery Life:** Features a soft silicone fingertip clip suitable for various finger sizes. Offers 20-30 hours of battery life and automatic power-off after 5 seconds of inactivity.
- **Clear Display:** The LED screen is designed for easy viewing and reading. A thin protective film can be removed for clearer display.

2. WHAT'S INCLUDED

Your CONTEC CMS50M Pulse Oximeter package includes the following items:

- CONTEC CMS50M Pulse Oximeter (x1)
- Handy Carry Pouch (x1)

- Long Lanyard (Neck/Wrist Cord) (x1)
- User Manual (x1)

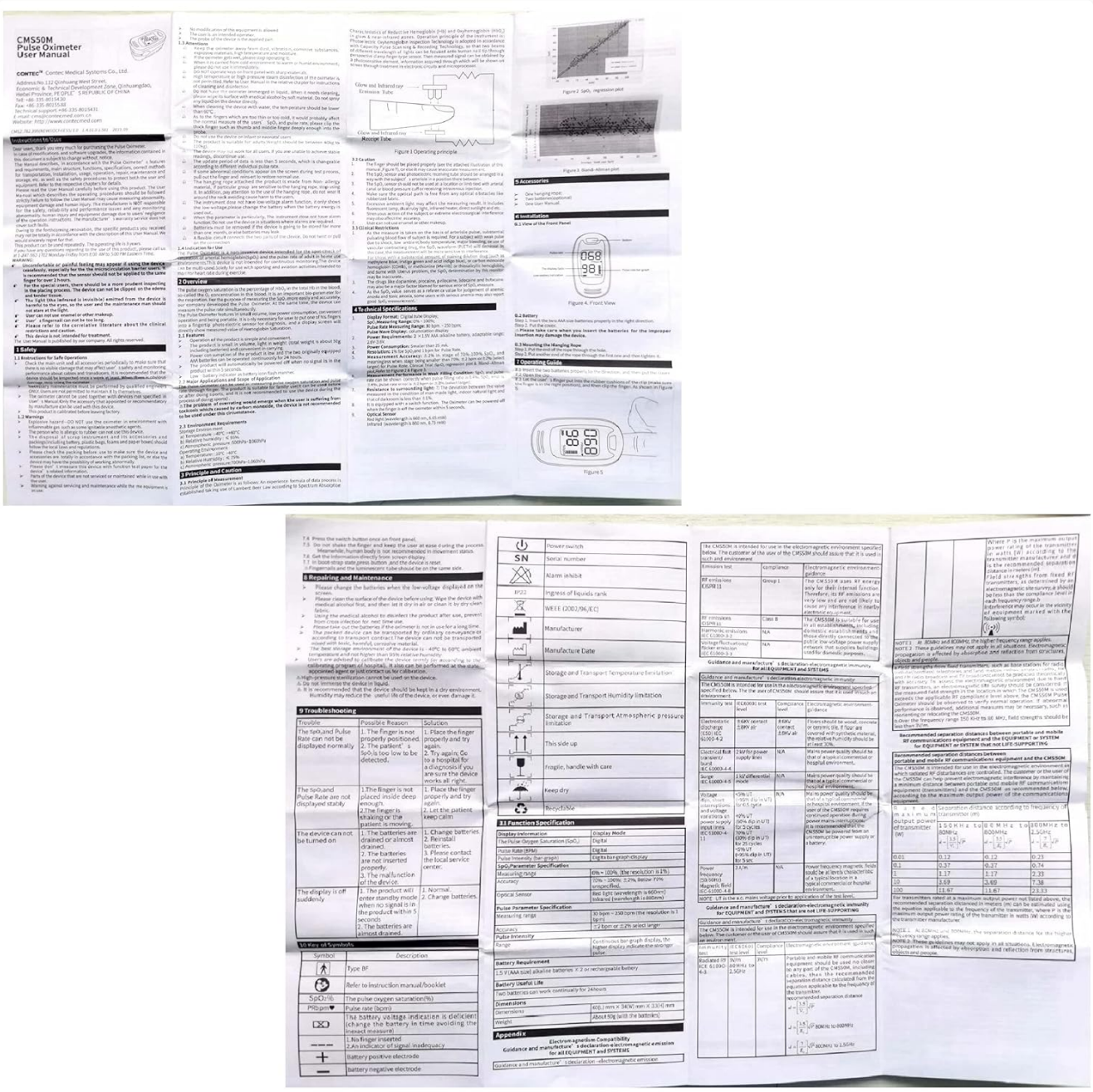


Image: The CONTEC CMS50M Pulse Oximeter $\times 2$ and its included accessories.

3. SETUP

3.1 Battery Installation

The CONTEC CMS50M Pulse Oximeter requires two AAA batteries (not included in some packages). Ensure correct polarity during installation.

1. Open the battery cover on the back of the device.
2. Insert two AAA batteries, matching the '+' and '-' indicators inside the compartment.
3. Close the battery cover securely.



Image: Correct battery installation for the pulse oximeter.

3.2 Removing Protective Film

A thin protective film is applied to the screen for shipping. For optimal display clarity, gently peel off this film before first use.

3.3 Attaching the Lanyard

To attach the lanyard, thread the thin loop end through the lanyard loop hole on the device. Then, pass the thicker part of the lanyard through the thin loop and pull to secure.

Portable and Easy to carry



Image: Instructions for attaching the neck/wrist cord.

4. OPERATING INSTRUCTIONS

Follow these steps to take a measurement with your CONTEC CMS50M Pulse Oximeter:

1. Ensure your hands are warm and free of nail polish for accurate readings.
2. Open the clip of the pulse oximeter.
3. Insert one finger fully into the rubber opening of the oximeter, ensuring it rests flat on the sensor.
4. Press the power button on the top of the device.
5. Keep your hand still and wait a few seconds for the device to display your SpO₂ and Pulse Rate readings. Movement can cause inaccurate results.
6. Once readings are stable, you can remove your finger. The device will automatically power off after 5 seconds of inactivity.

Accurate Pulse Oximeter

Measures real-time spo2, pulse rate and bar graph accurately and quickly.



Image: Step-by-step visual instructions for using the pulse oximeter.

4.1 Instructional Video

For a visual guide on how to use the CONTEC CMS50M Pulse Oximeter, please watch the following video:

Your browser does not support the video tag.

Video: Official CONTEC guide on how to use the CMS50M pulse oximeter, demonstrating battery installation and measurement steps.

5. MAINTENANCE

To ensure the longevity and accuracy of your pulse oximeter, follow these maintenance guidelines:

- **Cleaning:** Wipe the device with a soft cloth dampened with alcohol or a mild disinfectant. Do not immerse the device in liquid.
- **Storage:** Store the oximeter in a cool, dry place, away from direct sunlight and extreme temperatures. If not in

use for an extended period, remove the batteries.

- **Battery Replacement:** Replace batteries when the low battery indicator appears on the display.
- **Inspection:** Regularly check the device for any signs of damage or wear.

6. TROUBLESHOOTING

If you encounter issues with your pulse oximeter, consider the following:

- **No Display/Device Not Turning On:** Check if batteries are installed correctly with the right polarity. Replace batteries if they are low or depleted.
- **Inaccurate Readings:** Ensure your finger is fully inserted into the device and remains still during measurement. Avoid nail polish, cold fingers, or excessive movement.
- **"Finger Out" or Error Message:** Reinsert your finger properly. If the issue persists, ensure the sensor area is clean.
- **Loose Fit:** The device is designed to fit a range of finger sizes. Ensure your finger is positioned centrally.

If problems persist after attempting these troubleshooting steps, please contact customer support.

7. SPECIFICATIONS

Specification	Value
Brand	CONTEC
Model Number	CMS50M
Color	Black
Measuring Range (SpO2)	0%~100%
Measuring Range (PR)	30bpm~250bpm
Battery Life	26 Hours
Item Dimensions (L x W x H)	2.24"L x 1.34"W x 1.22"H
Power Source	2 x AAA Batteries (not always included)

8. IMPORTANT SAFETY INFORMATION

WARNING: Pulse oximeters provide an estimated oxygen saturation level. Research and safety communications indicate that certain physical traits, such as darker skin pigmentation and melanin, may cause the estimated oxygen level to appear higher than the actual value. Users are strongly recommended to establish a baseline value when healthy and at rest. It is advised to consult a licensed healthcare provider or professional on how to interpret user readings based on individual physical traits or characteristics.

This device is intended for sports and aviation use only and is not a medical device. It is not intended for continuous monitoring.

9. WARRANTY AND SUPPORT

For warranty information or technical support, please refer to the documentation included with your product or visit the official CONTEC website. Keep your purchase receipt for warranty claims.

