

Manuals.plus /

› LANVIER /

› Lanvier 1.25 Inch Clipped Curling Iron Instruction Manual

LANVIER B08QMQP918

Lanvier 1.25 Inch Clipped Curling Iron

INSTRUCTION MANUAL

Introduction

Thank you for choosing the Lanvier 1.25 Inch Clipped Curling Iron. This professional hair styling tool features an extra-long tourmaline ceramic barrel, offering consistent heat and smooth styling for beautiful, long-lasting curls. Designed for convenience, it includes adjustable temperature settings up to 450°F and dual voltage for worldwide use. Please read this manual thoroughly before use to ensure safe and effective operation.

Important Safety Information

WARNING: To reduce the risk of burns, electrocution, fire, or injury to persons:

- **Burn hazard:** Surfaces get extremely hot during use. Avoid contact with skin.
- **Electric shock risk:** Keep away from water. Do not use near bathtubs, sinks, or other water sources.
- **Fire risk:** Unplug when not in use. Do not leave unattended when plugged in.
- Keep out of reach of children.

Always unplug the appliance immediately after use. Do not use while bathing. Do not place or store appliance where it can fall or be pulled into a tub or sink. Do not place in or drop into water or other liquid. If an appliance falls into water, unplug it immediately. Do not reach into the water.

Product Features

- **Extra Long Ceramic Barrel:** The 1.25 inch curling iron features a 9-inch long barrel, ideal for styling long and thick hair to create beautiful, relaxed curls.
- **Tourmaline Ceramic Coating:** Provides even, consistent heat for high-shine curls and healthy hair while styling. The crushed pearl helps create smooth, frizz-defying waves.
- **5 Heat Settings:** Adjustable temperature from 300°F to 450°F allows for precise heat selection suitable for different hair types. A temperature lock function maintains your preferred setting during styling.
- **Worldwide Dual Voltage:** Supports 100V-240V, making it suitable for international travel.

- **Auto Shut-off:** Includes a 60-minute auto shut-off feature for enhanced safety and peace of mind.
- **360° Swivel Cord:** Provides flexibility and ease of use, preventing tangles during styling.

Professional Curling Iron for Loose Classic & Tight Curls



Image 1: Woman using Lanvier 1.25 inch curling iron to create loose waves. This image demonstrates the curling iron's ergonomic design and its effectiveness in creating soft, flowing curls.

1 1/4" Clipped Curling Iron

With Silk Ceramic Advanced Technology

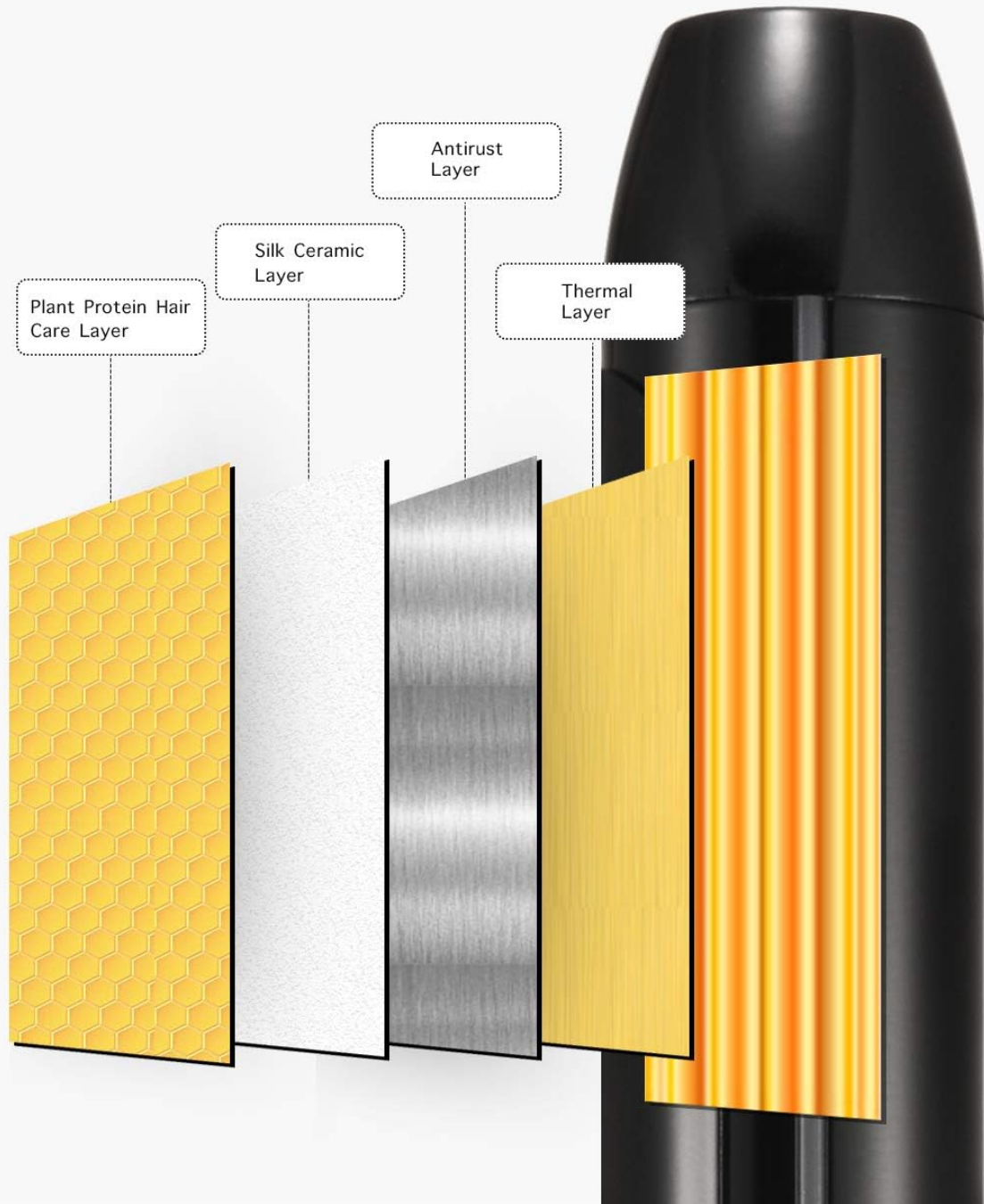
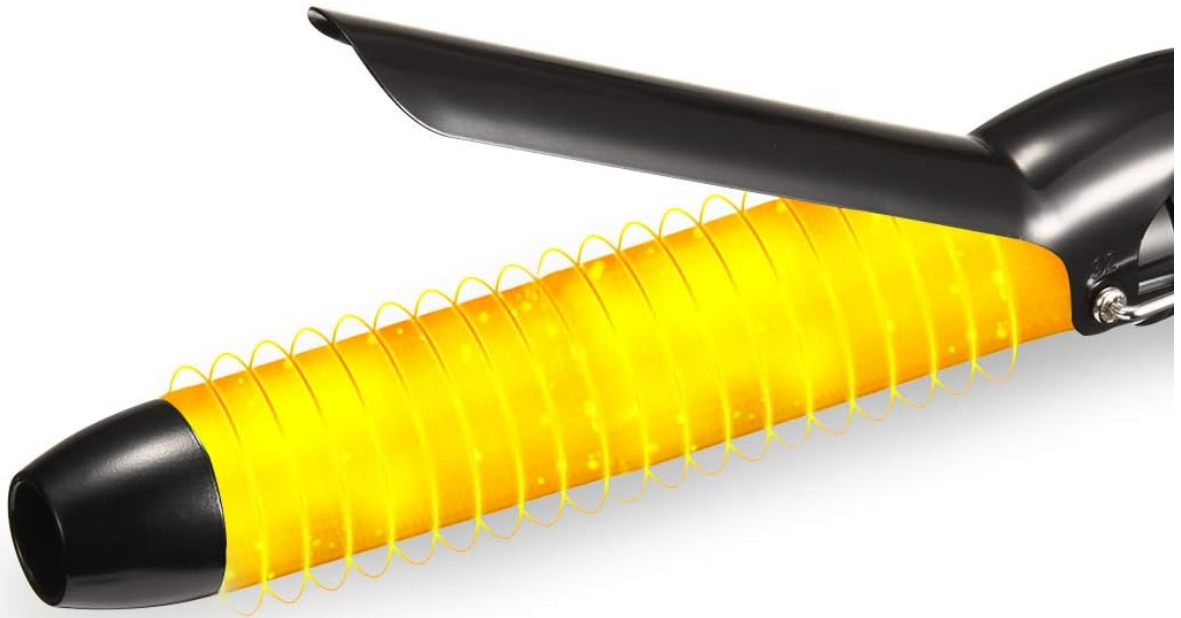


Image 2: Diagram illustrating the advanced multi-layer construction of the curling iron's barrel, designed for even heat distribution and hair protection.

Fast Heating

60S Heat up to 450°F



5 Heating Setting



Auto Off



10S Fast Heating



Ceramic Barrel

Image 3: Visual representation of the curling iron's rapid heating capability and key features like multiple heat settings and automatic shut-off.



450°F

Professional hair style

410°F

Hard-to-style hair

375°F

Textured hair

340°F

Fine and easy to style hair

300°F

Damaged hair

Image 4: Detailed view of the temperature control panel, highlighting the five adjustable heat settings suitable for various hair textures and styling needs.

Anti-scald Insulated Wand Tip



Image 5: An annotated diagram identifying the main components of the curling iron, including safety features and controls.

More Smooth

No Snagging

Tourmaline Ceramic Coating

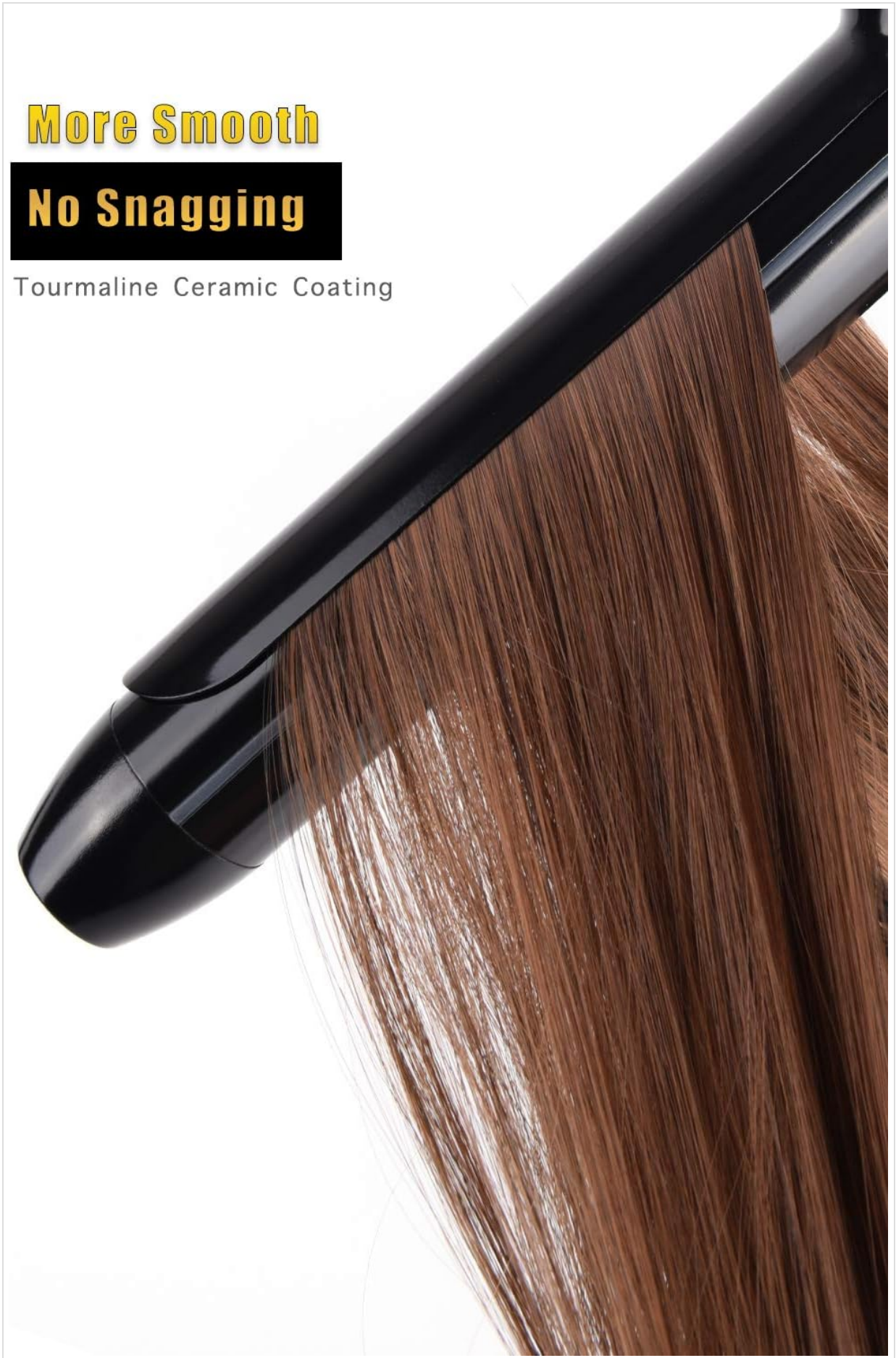


Image 6: An image showcasing the smooth glide of hair over the tourmaline ceramic coating, designed to prevent snagging and ensure effortless styling.

Setup

1. **Unpack:** Carefully remove the curling iron from its packaging. Retain packaging for storage or future transport.
2. **Inspect:** Check the appliance for any visible damage. Do not use if damaged.
3. **Placement:** Place the curling iron on a heat-resistant surface, ensuring the barrel does not touch any flammable materials. Utilize the integrated safety stand to keep the hot barrel elevated.
4. **Power Connection:** Plug the power cord into a suitable electrical outlet. The dual voltage feature (100V-240V) allows for use in various regions without a voltage converter, though a plug adapter may be required.

Operating Instructions

1. **Hair Preparation:** Ensure hair is clean, dry, and detangled before styling. For best results and heat protection, apply a heat protectant spray.
2. **Power On:** Press and hold the Power ON/OFF button until the temperature indicator lights up.
3. **Select Temperature:** Use the heat control buttons to select your desired temperature (300°F - 450°F). Refer to the temperature guide for recommendations based on hair type:
 - 300°F: Damaged hair
 - 340°F: Fine and easy to style hair
 - 375°F: Textured hair
 - 410°F: Hard-to-style hair
 - 450°F: Professional hair style

The curling iron will heat up rapidly.

4. **Curling Technique:** Choose a suitable temperature for your hair type. Take a section of hair and clip it onto the iron. Wrap the hair around the barrel, holding for a few seconds (typically 8-10 seconds for medium to large curls, 6-8 seconds for large and loose curls). Release the clamp and gently slide the iron out.
5. **Cooling Curls:** Allow curls to cool completely before touching or brushing them. This helps to set the curl and ensure longevity.
6. **Power Off:** After use, press and hold the Power ON/OFF button until the indicator lights turn off. Unplug the appliance from the electrical outlet.

Maintenance

1. **Cleaning:** Ensure the curling iron is unplugged and completely cool before cleaning. Wipe the barrel and handle with a soft, damp cloth. Do not use abrasive cleaners or immerse the appliance in water.
2. **Storage:** Store the cooled curling iron in a dry, safe place, away from moisture and extreme temperatures. Do not wrap the cord around the appliance, as this can damage the cord.

Troubleshooting

- **Appliance not heating:** Ensure the power cord is securely plugged into a working outlet. Check if the power button has been pressed and held to turn the unit on.
- **Curls not holding:** Ensure hair is completely dry before curling. Try a higher temperature setting suitable for your hair type. Allow curls to cool completely before styling further.
- **Hair snagging:** Ensure hair is detangled before curling. The tourmaline ceramic coating is designed to minimize snagging; if issues persist, check for any damage to the barrel.
- **Auto shut-off activates too soon:** The appliance has a 60-minute auto shut-off. If it turns off earlier,

ensure continuous use or restart the device.

Specifications

Feature	Specification
Brand	LANVIER
Model	B08QMQP918
Barrel Size	1.25 Inch (Extra Long)
Barrel Material	Tourmaline Ceramic
Temperature Range	300°F - 450°F
Voltage	100V-240V (Dual Voltage)
Auto Shut-off	60 Minutes
Color	Black

Warranty and Support

For warranty information or customer support, please refer to the product packaging or contact Lanvier customer service directly. Keep your purchase receipt as proof of purchase.