

JIFAR E16

JIFAR E16 1080P Projector User Manual

Model: E16

INTRODUCTION

This user manual provides comprehensive instructions for the setup, operation, maintenance, and troubleshooting of your JIFAR E16 1080P Projector. Please read this manual thoroughly before using the projector to ensure proper functionality and to extend the product's lifespan. Keep this manual for future reference.

SAFETY INSTRUCTIONS

To prevent fire or electric shock, do not expose this appliance to rain or moisture. Do not open the casing to avoid electric shock. Refer all servicing to qualified service personnel.

- Do not block ventilation openings.
- Use only attachments/accessories specified by the manufacturer.
- Unplug the projector during lightning storms or when unused for long periods.
- Avoid direct eye exposure to the projector lens when the lamp is on.
- Ensure proper ventilation around the projector to prevent overheating.

WHAT'S IN THE BOX

Upon opening the package, verify that all the following items are included:

- Projector Lens Cover
- HDMI Cable
- AV Cable

- Remote Control
- Power Cord
- User Manual (this document)



Image: The JIFAR E16 projector shown with its included carrying case, highlighting the compact design and portability.

PRODUCT OVERVIEW

Front and Side View

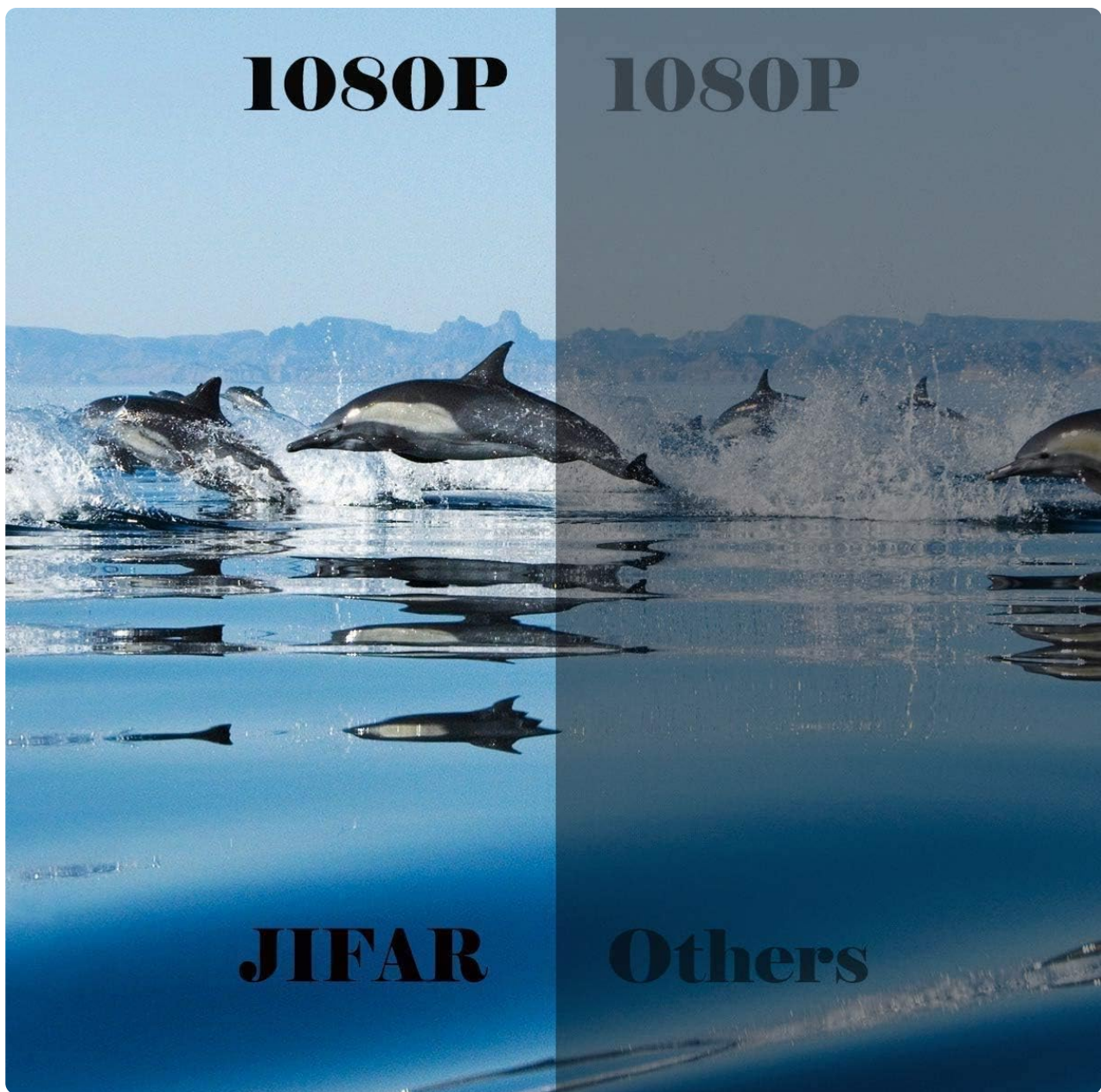


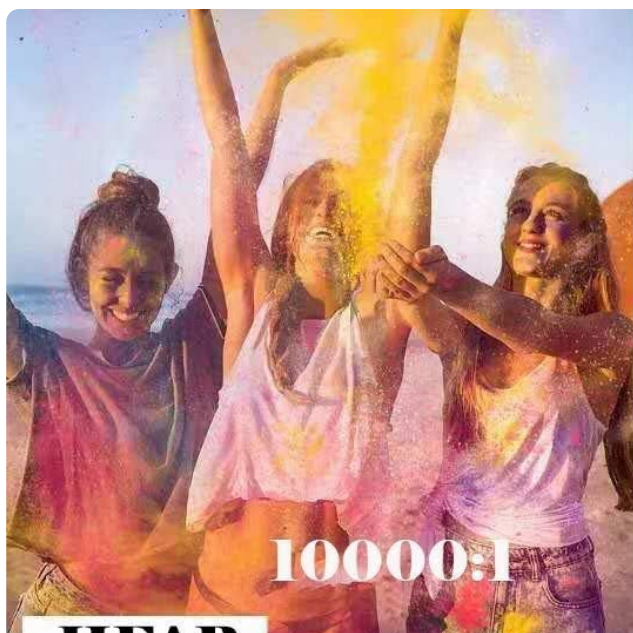
Image: Front and side view of the JIFAR E16 Projector, showing the lens, ventilation, and control buttons on top.

Rear Panel and Ports



Image: Rear panel of the JIFAR E16 Projector, illustrating the HDMI, USB, AV, and audio ports for various connections.

Remote Control



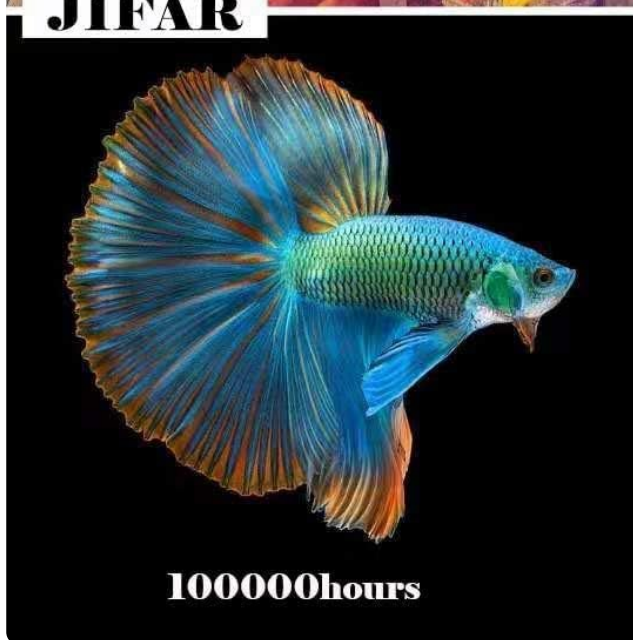
10000:1

JIFAR

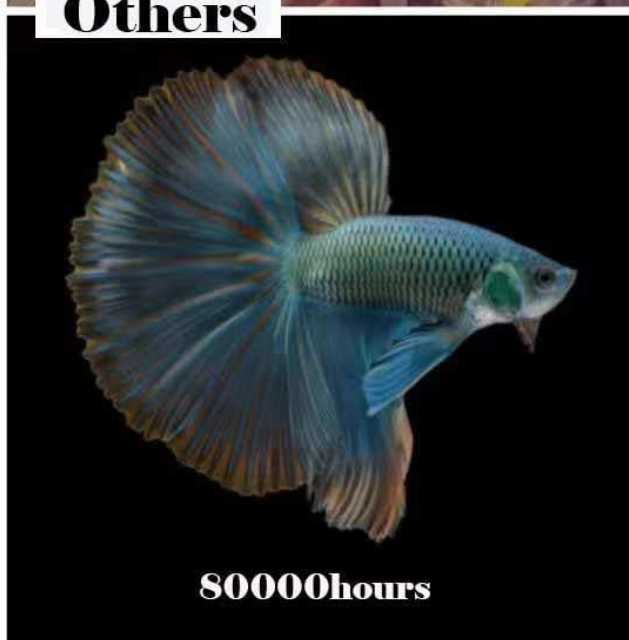


8000:1

Others



100000hours



80000hours

Image: The remote control for the JIFAR E16 Projector, showing buttons for power, navigation, source selection, and volume.

SETUP

1. Placement

Place the projector on a stable, flat surface. For optimal viewing, position the projector perpendicular to the screen or wall. The projection distance and screen size can vary; refer to the specifications section for recommended distances.

2. Power Connection

1. Connect the power cord to the projector's power input.
2. Plug the other end of the power cord into a power outlet.
3. The power indicator light on the projector will illuminate.

3. Initial Power On

Press the power button on the projector or the remote control to turn on the device. The projector will display the startup screen.

4. Focus and Keystone Adjustment

Adjust the focus ring on the projector lens until the projected image is clear. Use the keystone correction dial (if available) to correct any trapezoidal distortion, ensuring a rectangular image.



Image: A visual representation of the projector in a home theater setup, demonstrating the clarity and size of the projected image after focus and keystone adjustments.

OPERATING THE PROJECTOR

1. Connecting Devices

The JIFAR E16 projector supports various input sources:

- **HDMI:** Connect laptops, gaming consoles, Blu-ray players, or TV sticks using an HDMI cable.
- **USB:** Insert USB drives to play media files directly.
- **AV:** Use the provided AV cable to connect older devices like DVD players.
- **TF Card:** Insert a TF card for direct media playback.

After connecting a device, press the "Source" button on the remote or projector to select the corresponding input source (e.g., HDMI1, USB, AV).

Screen Mirroring for iOS System

- 1.** Select screen mirroring as the input source of your projector.
- 2.** Connect your projector to your WiFi network.
- 3.** Open control center and tap Screen Mirroring on your iOS device.
- 4.** Select Projector name LZS-XXXXXXX and connect.

Image: Diagram illustrating the versatile connectivity of the projector, showing connections to smartphones, tablets, and laptops via various methods.

2. Wireless WiFi Connection (Screen Mirroring)

The projector supports 2.4G and 5G WiFi for screen mirroring from iOS and Android devices.

JIFAR
Pitch Your Theater Anywhere

1080P Native **4K Supported** **12000 Lumens** **10000:1** **5G**

Image: Visual comparison demonstrating the faster and smoother performance of 5G WiFi connectivity compared to 2.4G for streaming content to the projector.

For iOS Devices:

1. Select "Screen Mirroring" as the input source on your projector.
2. Connect your projector to your WiFi network.
3. On your iOS device, open Control Center and tap "Screen Mirroring".
4. Select your projector's name (e.g., LZS-XXXXXXX) from the list to connect.



Image: Step-by-step guide for connecting an iOS device to the projector via screen mirroring, showing menu selections and connection process.

Note: Due to copyright restrictions, streaming services like Netflix, Amazon Prime, and Disney+ do not support screen mirroring. For these services, please use an HDMI connection with a compatible streaming device (e.g., TV Stick, Chromecast).

3. Bluetooth Connection

The projector features built-in Bluetooth for connecting external audio devices such as Bluetooth speakers or headphones.

1. Navigate to the Bluetooth settings on the projector's menu.
2. Enable Bluetooth and search for available devices.
3. Select your desired Bluetooth speaker or headphone from the list to pair.

Note: The projector's Bluetooth function is for audio output only. It does not support data transfer from smartphones via Bluetooth.

MAINTENANCE

1. Cleaning the Lens

Use a professional lens cleaning cloth or lens paper to gently wipe the projector lens. Avoid using abrasive cleaners or cloths that could scratch the lens surface.

2. Cleaning the Projector Body

Wipe the projector's exterior with a soft, dry cloth. For stubborn marks, a slightly damp cloth can be used,

followed by a dry cloth. Do not use harsh chemicals or solvents.

3. Storage

When not in use for extended periods, store the projector in a cool, dry, and dust-free environment. Use the provided lens cover to protect the lens from dust and scratches.

TROUBLESHOOTING

Problem	Possible Cause	Solution
No Power	Power cord not connected; Power outlet issue; Projector in standby mode.	Ensure power cord is securely connected. Try a different outlet. Press power button on projector or remote.
No Image	Incorrect input source selected; Cable not connected properly; Device not outputting signal.	Select correct input source. Check HDMI/USB/AV cable connections. Ensure source device is on and outputting.
Blurred Image	Focus not adjusted; Keystone not adjusted; Projector too close/far.	Adjust focus ring. Adjust keystone correction. Reposition projector within recommended distance.
No Sound	Volume too low; Muted; External audio device not connected/paired.	Increase volume. Unmute projector. Check Bluetooth connection or audio cable.
Screen Mirroring Issues (Netflix/Prime Video)	Copyright protection on streaming apps.	Connect a streaming device (e.g., Fire TV Stick, Roku) via HDMI to play copyrighted content.

SPECIFICATIONS

Feature	Detail
Native Resolution	1280 x 720P (Supports 1920 x 1080P)
Contrast Ratio	6000:1
Brightness	350 ANSI Lumens / 12000L
Connectivity Technology	HDMI, USB, AV, TF Card, WiFi (2.4G/5G), Bluetooth
Product Dimensions	9.26 x 5.5 x 3 inches
Item Weight	4.55 pounds
Display Resolution	1920 x 1080 (Supported Input)

Feature	Detail
Recommended Uses	Tabletop Mount
Special Feature	Built-in Speakers
Visible Screen Diagonal	Up to 450 inches / 1143 cm

WARRANTY AND SUPPORT



JIFAR is committed to providing excellent products and customer service. Your JIFAR E16 Projector comes with the following support:

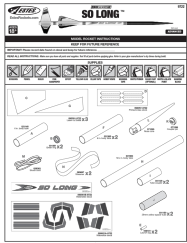
- **6-Month Money Back & New Replacement Guarantee:** If any problems occur, contact us immediately for a refund or a new replacement within 6 months of purchase.
- **2-Year Professional Technical Support:** We offer professional technical assistance for two years from the date of purchase.
- **Missing or Broken Parts:** If you receive a package with missing parts or a broken item, we will send a new one to you free of charge.

For any inquiries or support, please contact JIFAR customer service through the platform where you purchased the product or refer to the contact information provided on the official JIFAR website.

© 2024 JIFAR. All rights reserved.

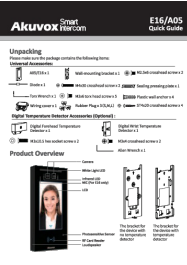
Related Documents - E16

	<p>Baseus Bowie E16 TWS True Wireless Earphones Quick Start Guide</p> <p>A quick start guide for the Baseus Bowie E16 TWS True Wireless Earphones, covering setup, usage, and features.</p>
	<p>Katasymbol E16 Label Printer User Guide and Safety Information</p> <p>A comprehensive guide to the Katasymbol E16 label printer, covering setup, usage, troubleshooting, safety precautions, warranty, and product specifications. Includes information on connecting via the Katasymbol app and using various label types.</p>



[Estes So Long Model Rocket Instructions](#)

Comprehensive instructions for building and launching the Estes So Long model rocket, including parts lists, assembly steps, finishing tips, and safety precautions.



[Akuvox E16/A05 Series SIP Video Door Intercom Quick Guide](#)

This guide provides essential information for the quick installation and basic setup of the Akuvox E16 and A05 series SIP video door intercom systems. These devices are designed for secure and convenient communication in various environments.



MAG Series
LCD Monitor
MSI 322URDF E16 (2020)
User's Guide

[MSI MAG 322URDF E16 LCD Monitor User Guide](#)

Comprehensive user guide for the MSI MAG 322URDF E16 LCD Monitor, covering setup, OSD menus, specifications, troubleshooting, safety, and regulatory information.

ThinkPad E14 Gen 6 / ThinkPad E16 Gen 2
Linux User Guide



[Lenovo ThinkPad E14 Gen 6 / E16 Gen 2 Linux User Guide](#)

Comprehensive user guide for Lenovo ThinkPad E14 Gen 6 and ThinkPad E16 Gen 2 laptops running Linux. Covers setup, system exploration, security, advanced configuration, hardware replacement, and support resources.