

Kenko KC-TY02

Kenko PIENIFLEX KC-TY02 Dual Lens Toy Digital Camera Instruction Manual

Model: KC-TY02

1. INTRODUCTION

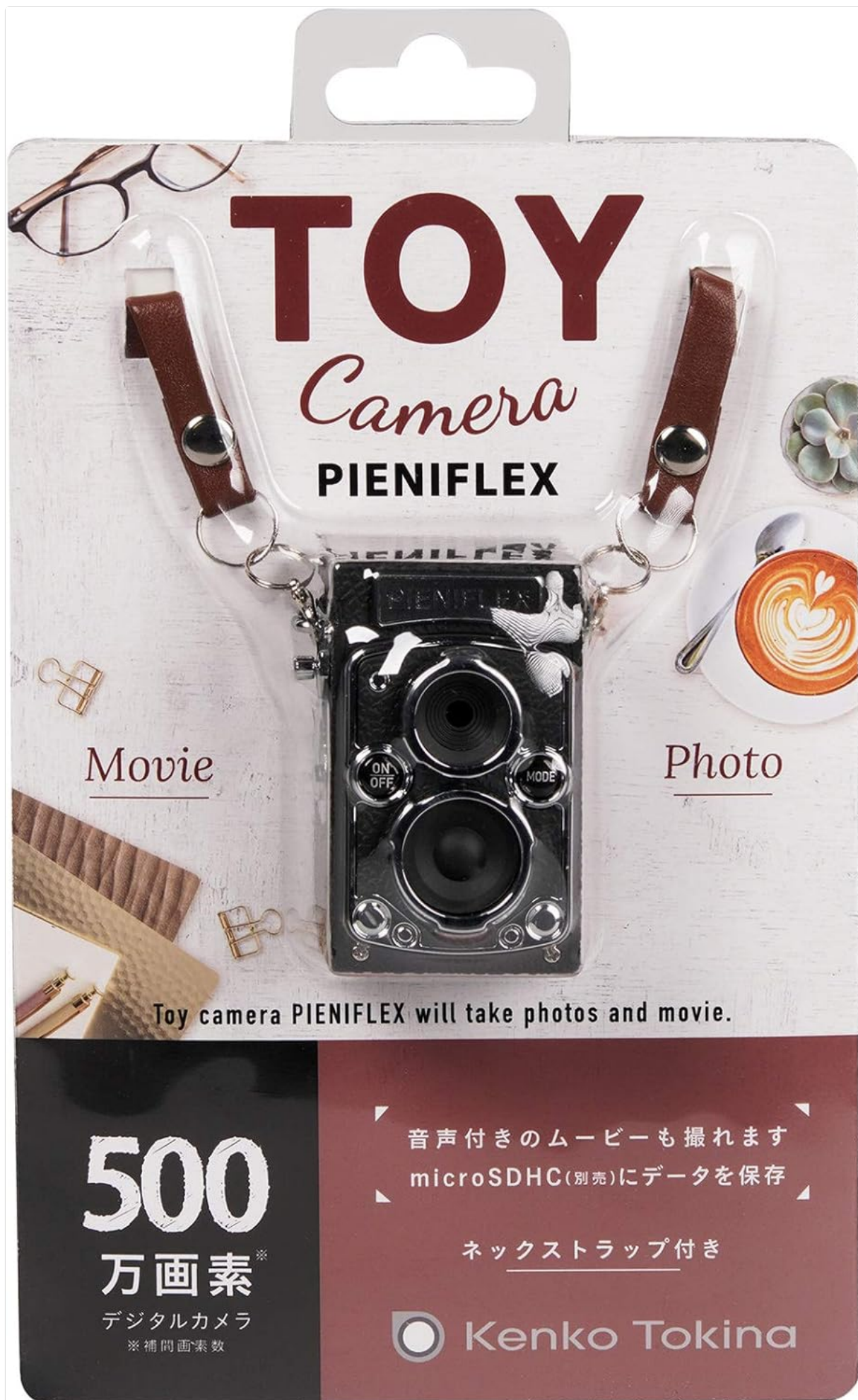
This manual provides essential instructions for the safe and effective use of your Kenko PIENIFLEX KC-TY02 Dual Lens Toy Digital Camera. This camera is designed to capture photos, videos, and audio recordings, offering a unique classic aesthetic. Please read this manual thoroughly before operating the device.

2. PACKAGE CONTENTS

Verify that all items listed below are included in your package:

- Kenko PIENIFLEX KC-TY02 Camera Body
- USB Connection Cable
- Neck Strap
- Instruction Manual (English language not guaranteed in original packaging)

Note: A microSDHC card is required for operation and is sold separately.



Movie

Photo

Toy camera PIENIFLEX will take photos and movie.

500

万画素[※]

デジタルカメラ

※補間画素数

音声付きのムービーも撮れます
microSDHC(別売)にデータを保存

ネックストラップ付き



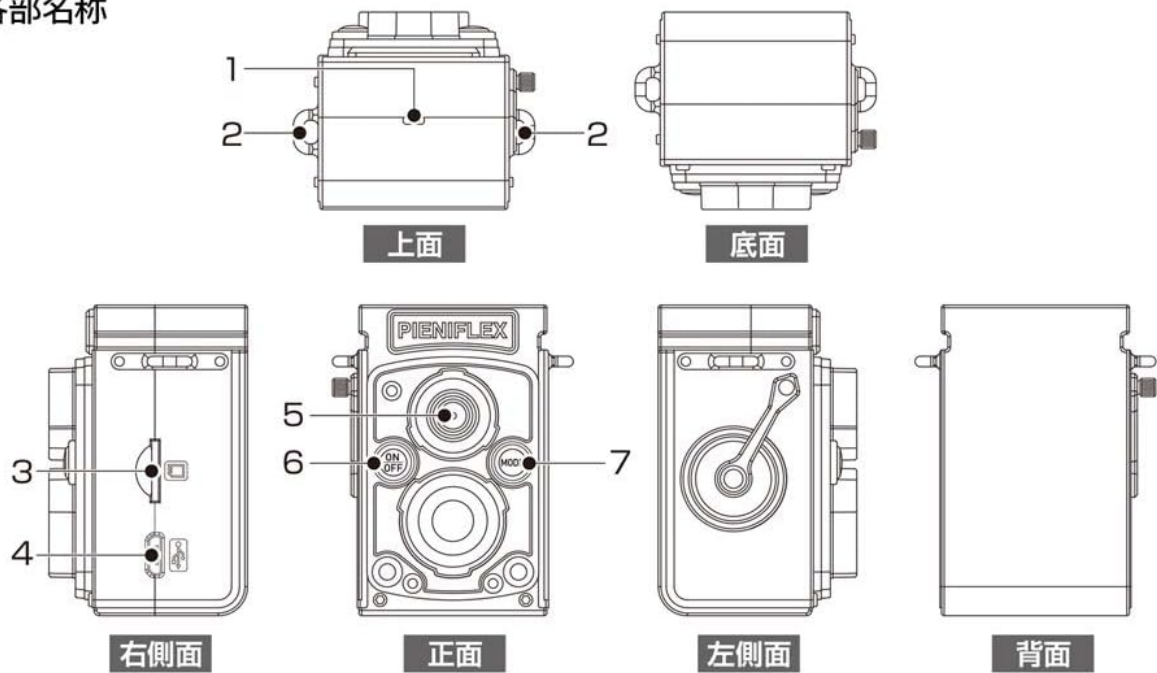
Kenko Tokina

Image: The Kenko PIENIFLEX KC-TY02 camera packaging, illustrating the camera and included accessories.

3. PARTS IDENTIFICATION

Familiarize yourself with the various parts of your Kenko PIENIFLEX KC-TY02 camera:

各部名称



1. 赤色／青色LEDランプ
3. microSDHCメモリーカードスロット
6. 電源／撮影ボタン
2. ストラップ取り付け穴
4. micro USBポート
7. モードボタン
5. レンズ

製品仕様

イメージセンサー	1／4型 CMOS	動画サイズ	1280×720(25fps)
総画素数	95万画素	シャッタースピード	1/100～1/25秒(自動)
有効画素数	92万画素	ISO感度	100
補間画素数	500万画素	セルフタイマー	なし
レンズ	f=3.43mm F2.8	内蔵フラッシュ	なし
焦点距離	41mm相当(35mm換算)	露出補正	なし
ズーム	なし	ホワイトバランス	固定
撮影距離	標準：約0.5m ～ ∞	手ぶれ軽減機能	なし
液晶モニター	なし	DPOFプリント	非対応
内蔵メモリー	ユーザー使用可能領域はありません	ダイレクトプリント	非対応
外部メモリー	micro SDHCメモリーカード (4GB～32GB)	内蔵電池	リチウムイオン充電電池
ファイル形式	静止画:JPEG	入出力ポート	USB 2.0
	動画: MJPEG(AVI)	寸法(幅×高さ×奥行)	約46×60×39mm
	音声:WAV	重量	約36g (microSDHCカード、付属品除く)
静止画サイズ	2592×1936		

原産国 中国

同梱品 ●カメラ本体 ●USBケーブル ●ネックストラップ ●取扱説明書

発売元：株式会社 **ケンコー・トキナー**

〒164-8616 東京都中野区中野5-68-10 KT中野ビル

ケンコー・トキナーホームページ <https://www.kenko-tokina.co.jp/>

★ 製品に関する
お問い合わせ



お客様お問合せフォームは ケンコー・トキナーお客様相談室
こちらのQRコードから。 ☎0120-775-818

パソコンからは、
「ケンコー・トキナー お問い合わせ」
で検索。 携帯・IP電話からは
03-6840-3389
※通話料金がかかります。

受付時間：月～金 9:15～17:30(土、日、祝日、年末年始、夏季休業等を除く)

Image: A detailed diagram identifying the various components of the Kenko PIENIFLEX KC-TY02 camera, including buttons, ports, and lenses.

1. LED Indicator (Red/Green)

2. Strap Attachment Point
3. microSDHC Memory Card Slot
4. Micro USB Port
5. Lens
6. ON/OFF Button
7. MODE Button

4. SETUP

4.1. Inserting the microSDHC Card

The camera requires a microSDHC card (up to 32GB capacity recommended) to store photos, videos, and audio. Insert the card into the microSDHC card slot (3) until it clicks into place. Ensure the card is formatted to FAT32 for optimal compatibility. If the card is not recognized or data cannot be saved, format it using a computer.

4.2. Charging the Camera

Connect the camera to a computer or a USB power adapter using the included USB cable via the Micro USB Port (4). The LED indicator will show charging status. A full charge is recommended before first use.

4.3. Attaching the Neck Strap

Attach the provided neck strap to the strap attachment points (2) on the camera. This allows for convenient carrying and helps prevent accidental drops.



Image: The Kenko PIENIFLEX KC-TY02 camera with its neck strap attached, ready for use.

5. OPERATION

5.1. Power On/Off

To power on the camera, press and hold the ON/OFF Button (6). The LED indicator will illuminate. To power off, press and hold the ON/OFF Button again.

5.2. Selecting Modes (Photo, Video, Voice Recording)

Press the MODE Button (7) to cycle through the available modes: Photo, Video, and Voice Recording. The LED indicator may change color or blink pattern to indicate the selected mode (refer to the original manual for specific LED indications).

5.3. Taking Photos/Videos

Once the desired mode is selected, press the ON/OFF Button (6) to capture a photo or start/stop video recording. This camera does not feature a viewfinder or LCD display, so framing is done by estimation. Connect the camera to a computer to review captured media.



Image: Front view of the Kenko PIENIFLEX KC-TY02 camera, showing the dual lenses and control buttons.

5.4. Connecting to a Computer for Data Transfer

To access your captured photos, videos, and audio, connect the camera to your computer using the supplied USB cable. The camera will appear as a removable storage device. You can then transfer files to your computer.

どんな写真が撮れているかは
パソコンにつないでからの楽しみ♪



Image: The Kenko PIENIFLEX KC-TY02 camera connected to a laptop via its USB cable, indicating data transfer or charging.

6. IMPORTANT NOTES ON USAGE

- **No Viewfinder or LCD:** This camera operates without a live preview screen. Images are captured based on estimation.
- **Image Quality:** As a toy digital camera, the image quality is designed to have a unique, retro aesthetic rather than high-resolution clarity.
- **Date Stamp:** The date stamp on captured media may default to an incorrect year (e.g., 2020 instead of 2024). Manual adjustment for each photo is not practical.



PENIFLEXで撮影

Image: A sample photograph taken with the PIENIFLEX camera, showcasing autumn trees with a distinct visual style.



PENIFLEXで撮影

Image: Another sample photograph from the PIENIFLEX camera, featuring a vintage pocket watch, highlighting the camera's unique image rendition.

7. TROUBLESHOOTING

- **Camera not turning on:** Ensure the camera is fully charged. Connect it to a USB power source and allow it to charge for at least 2 hours.
- **Cannot save photos/videos to SD card:**
 - Verify that a microSDHC card is properly inserted into the slot.
 - Ensure the microSDHC card is formatted to FAT32. If not, format it using a computer.
 - Check if the card is full. Transfer files to a computer to free up space.
 - Ensure the card capacity does not exceed 32GB, as larger cards may cause compatibility issues.
- **Difficulty ejecting microSDHC card:** The card slot may require firm pressure to eject the card. Use a non-sharp object like a pen tip to gently push the card in until it clicks and releases. Avoid excessive force to prevent damage.
- **Incorrect date stamp on photos:** This is a known characteristic of the camera. The date stamp may not be adjustable or may reset.
- **Poor image framing:** Due to the absence of a viewfinder or LCD, framing requires practice. Try taking multiple shots and adjusting your aiming technique.

8. SPECIFICATIONS

Feature	Specification
Model Name	PIENIFLEX KC-TY02
Photo Sensor Technology	CMOS
Effective Still Resolution	0.95 MP (Interpolated to 5 MP)
Video Resolution	720p (1280x720) at 25fps
Supported File Format (Still)	JPEG
Supported File Format (Video)	AVI (Motion JPEG)
Supported File Format (Audio)	WAV
Storage Media	microSDHC card (4GB-32GB, sold separately)
Lens Type	Fixed focal length prime lens
Optical Zoom	1x
Aperture	F3.5
ISO Range	100 and above (Automatic)
Shutter Speed	1/100 - 1/25 seconds (Automatic)
Connectivity	USB 2.0
Power Source	Built-in Lithium-ion battery
Dimensions (W x H x D)	Approx. 46 x 89 x 39 mm
Weight	Approx. 36 grams (excluding microSDHC card)
Special Feature	Voice Recording

9. CARE AND MAINTENANCE

- Keep the camera dry. Do not expose it to water or excessive moisture.
- Clean the camera body with a soft, dry cloth. Avoid using harsh chemicals or abrasive materials.
- Store the camera in a cool, dry place away from direct sunlight and extreme temperatures.
- Handle the microSDHC card carefully to prevent data loss or damage.

10. WARRANTY AND SUPPORT

For warranty information and customer support, please refer to the documentation included with your purchase or visit the manufacturer's official website.

For inquiries regarding Kenko products, you may contact Kenko Tokina customer support:

- **Online Contact Form:** <https://www.kenko-tokina.co.jp/contact/form.html>
- **Telephone (Japan):** 0120-775-818 or 03-6840-3389

Please note that international call charges may apply for telephone support.

