

Manuals+

[Q & A](#) | [Deep Search](#) | [Upload](#)

manuals.plus /

- › [Enbrighten](#) /
- › [Enbrighten Zigbee Smart Light Switch User Manual](#)

Enbrighten 43078

Enbrighten Zigbee Smart Light Switch User Manual

Model: 43078

PRODUCT OVERVIEW

The Enbrighten Zigbee In-Wall Smart Switch (Model 43078) offers advanced control over your home's lighting, fans, and other permanently installed fixtures. Designed with QuickFit™ and SimpleWire™ technologies, this smart switch provides easier installation and enhanced reliability. It integrates seamlessly with compatible Zigbee gateways and can directly pair with select Amazon Alexa products for convenient voice control.

Key features include:

- **Revolutionary, patent-pending design:** QuickFit and SimpleWire technologies offer groundbreaking home automation features, making smart controls easier to install and more reliable.
- **QuickFit:** Improved components reduce housing depth by up to 20% compared to previous Zigbee models and eliminate the need for break-off tabs. Ideal for older-style switch boxes or multi-gang configurations with limited space.
- **SimpleWire:** Auto-detecting line/load terminals support fast installation by identifying line and load wires and configuring the switch accordingly. Dual ground ports, offset to avoid switch box mounting screws, support daisy-chaining in multi-switch setups.
- **Voice control:** Pair directly with 1st and 2nd generation Echo Plus, Echo Show 10, or Echo Studio for immediate voice command of connected devices. No additional equipment is required for use with these Echo models. Other Amazon Alexa and Google Assistant products can also be used for voice control when connected through a compatible Zigbee hub.
- **Energy monitoring:** Stay informed of energy use when paired with a compatible hub. Energy-monitoring readings and functions vary based on hub capabilities.

SETUP AND INSTALLATION

Before beginning installation, ensure the power to the circuit breaker is turned OFF. A neutral wire is required for the operation of this smart switch.

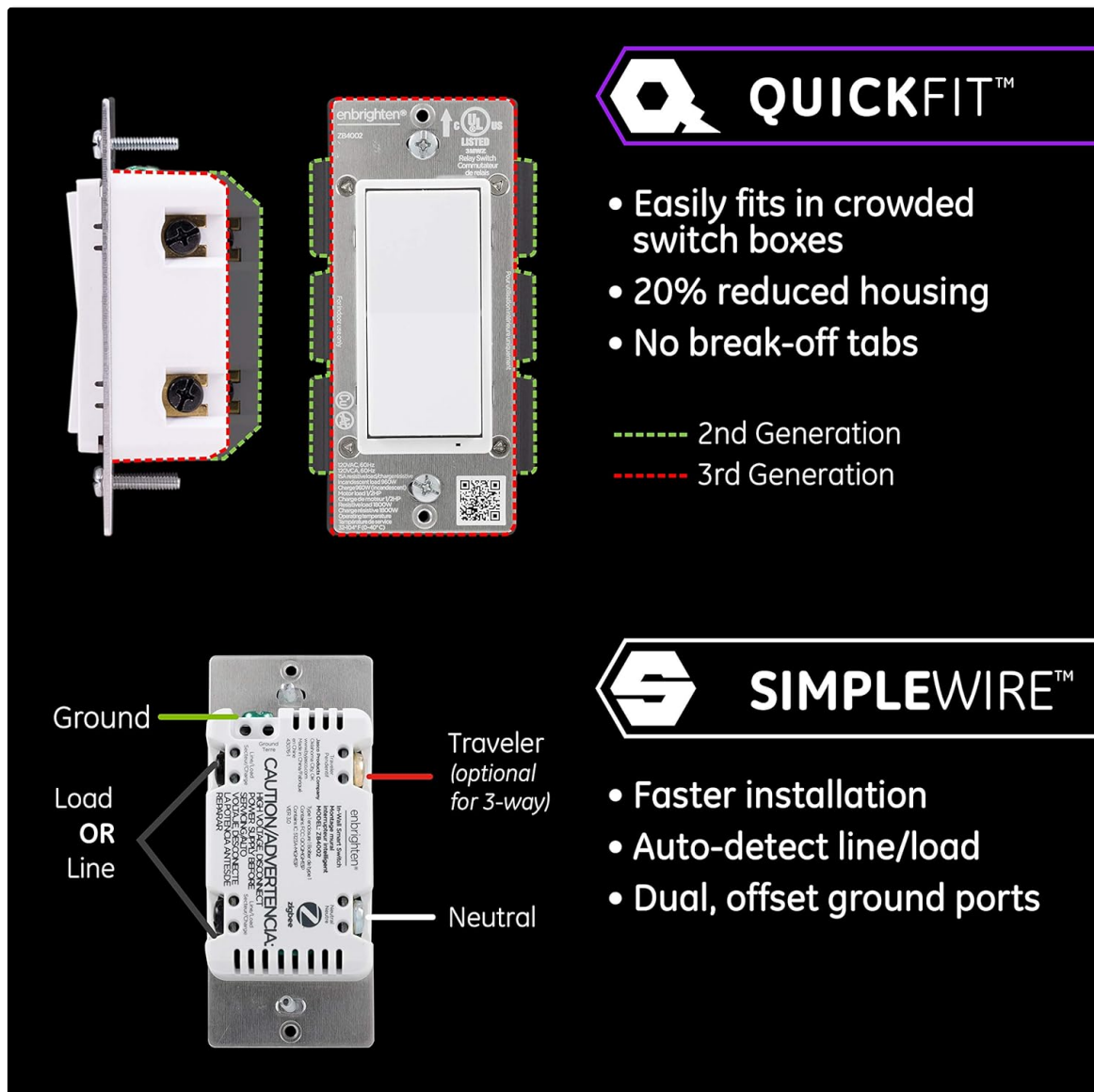
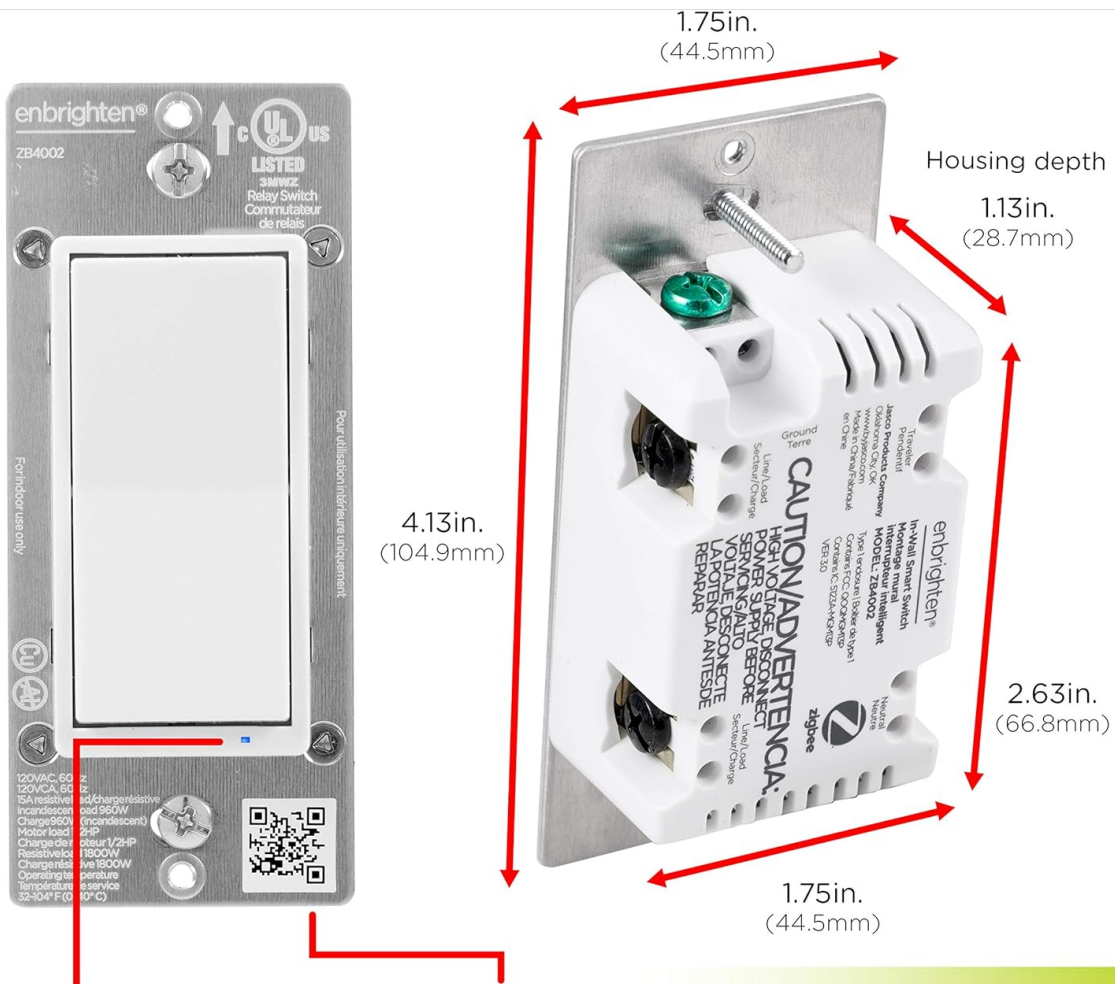


Figure 1: QuickFit and SimpleWire Technologies. This image highlights the reduced housing depth (QuickFit) and the auto-detecting line/load terminals with dual ground ports (SimpleWire) for easier installation. A basic wiring diagram shows connections for Ground, Load/Line, Traveler (optional for 3-way), and Neutral.

The QuickFit design allows the switch to fit easily into crowded switch boxes due to its 20% reduced housing depth and no break-off tabs. SimpleWire technology simplifies wiring by automatically detecting line and load wires. Dual, offset ground ports further assist in multi-switch setups.

For detailed wiring instructions and diagrams for various configurations (e.g., single-pole, 3-way), please refer to the comprehensive user manual provided with your product or available for download from the manufacturer's website.



LED Indicator
4 selectable indicator light options

Zigbee 3.0 Install Code

Energy Monitoring

Report energy use of connected devices to reduce consumption and save money

Figure 2: Product Dimensions and Features. This image provides the physical dimensions of the smart switch (e.g., housing depth 1.13in, height 4.13in). It also points out the LED Indicator and the Zigbee 3.0 Install Code location. The Energy Monitoring feature is highlighted, allowing users to report energy use to reduce consumption.

After physical installation, the switch can be paired with a compatible Zigbee hub. For direct pairing with Amazon Echo devices, no additional hub is required.

No hub required for premium **Amazon Echo** products with built-in Zigbee hubs, including:



amazon
echo plus
1st generation



amazon
echo plus
2nd generation



amazon
echo show
2nd generation - 10.1in.



amazon
echo studio

Figure 3: Direct Pairing with Amazon Echo Products. This image displays Amazon Echo Plus (1st and 2nd generation), Echo Show 10 (2nd generation), and Echo Studio, indicating that no hub is required for direct pairing with these devices.

OPERATING INSTRUCTIONS

Basic Operation

Once installed and paired, the smart switch functions like a traditional light switch. Press the top of the paddle to turn the connected device ON, and the bottom of the paddle to turn it OFF.

Voice Control

For voice control, ensure your smart switch is paired with a compatible Zigbee hub or directly with a supported Amazon Echo device. Once paired, you can use voice commands through Alexa or Google Assistant to control your lights.



Figure 4: Voice Control Capabilities. This image depicts a family using voice commands to control their smart home devices, illustrating compatibility with Alexa and Google Assistant. A Zigbee hub may be required for full functionality with all voice assistants.

Energy Monitoring

If connected to a compatible Zigbee hub that supports energy monitoring, you can track the energy consumption of devices connected to the smart switch. Refer to your hub's application or interface for details on accessing energy usage data.

3-Way Ready and Bulb Compatibility

The Enbrighten Smart Switch is 3-way ready, allowing control of lights, fans, or appliances from up to five locations when used with compatible add-on switches. It is compatible with various bulb types, including LED, CFL, incandescent, and halogen bulbs.



3-Way Ready

Control lights, fans or appliances from up to five locations



Compatible Bulbs

Works with LED, CFL, incandescent and halogen bulbs

Need help? Contact our U.S.-based Consumer Care using the number in your user's manual.

Figure 5: 3-Way Ready and Compatible Bulbs. This image illustrates the switch's capability for 3-way control and its compatibility with LED, CFL, incandescent, and halogen bulbs.

LED Indicator Behavior

The smart switch features a blue LED indicator. By default, this LED is ON when the switch is OFF, and OFF when the switch is ON. To toggle this behavior (i.e., LED ON when light is ON, and OFF when light is OFF), perform the following sequence:

1. Press the top of the paddle (ON) three times rapidly.
2. Immediately press the bottom of the paddle (OFF) once.

This sequence will reverse the LED indicator's behavior.

MAINTENANCE

The Enbrighten Zigbee Smart Light Switch requires minimal maintenance. To clean the switch, gently wipe the surface with a soft, dry cloth. Do not use abrasive cleaners, solvents, or harsh chemicals, as these may damage the finish or internal components. Ensure power is off before cleaning.

TROUBLESHOOTING

Switch Not Responding

- **Check Power:** Ensure the circuit breaker supplying power to the switch is ON.
- **Verify Wiring:** Double-check all wiring connections (Line, Load, Neutral, Ground, Traveler if applicable) are secure and correctly installed according to the wiring diagram in the full user manual. A neutral wire is essential for operation.
- **Reset Switch:** Turn off power at the circuit breaker for a few minutes, then restore power. This can resolve minor operational glitches.

Connectivity Issues (Unavailable in Home Automation)

- **Zigbee Network Range:** Ensure the switch is within range of your Zigbee hub or a strong Zigbee repeater. Walls and other obstacles can interfere with the signal.
- **Hub Status:** Verify that your Zigbee hub is powered on, connected to your network, and functioning correctly.
- **Re-pair Device:** If the issue persists, try removing the device from your Zigbee network and re-pairing it according to your hub's instructions.
- **Interference:** Other wireless devices operating on similar frequencies (e.g., Wi-Fi routers, cordless phones) can cause interference. Try to minimize such interference.

LED Indicator Behavior Not Desired

- Refer to the "LED Indicator Behavior" section under Operating Instructions to change the LED's default setting.

If you continue to experience issues after attempting these troubleshooting steps, please contact customer support.

SPECIFICATIONS

Specification	Detail
Model Number	43078
Operation Mode	ON-OFF
Current Rating	15 Amps
Operating Voltage	120 Volts (AC)
Contact Type	Normally Open
Connector Type	Clamp
Item Dimensions (L x W x H)	2.6 x 3.05 x 6.05 inches

Item Weight	5.9 ounces
Circuit Type	2-way
Actuator Type	Rocker Switch
Contact Material	Metal
International Protection Rating	IP00
Lower Temperature Rating	32 Degrees Fahrenheit
Upper Temperature Rating	104 Degrees Fahrenheit
Controller Type	Wink, Google Assistant, SmartThings, Amazon Alexa, Nest
Control Method	Voice
Connectivity Protocol	ZigBee
Color	White & Light Almond
Wattage	600 Watts
Power Source	Corded Electric
Country of Origin	China
UPC	030878430784

WARRANTY INFORMATION

The Enbrighten Zigbee Smart Light Switch comes with a **5-year limited warranty**. For specific terms and conditions of the warranty, please refer to the warranty documentation included with your product or contact customer support.

SUPPORT

For further assistance, technical support, or warranty claims, please contact Enbrighten's U.S.-based Consumer Care. Refer to your product packaging or the full user manual for specific contact information (phone number, website, or email address).

enbrighten®



Full line of **Enbrighten Zigbee** products available for a complete smart home system

Figure 6: Enbrighten Zigbee Product Line. This image showcases various Enbrighten Zigbee products, indicating a full line is available for a complete smart home system.