

## SMALLRIG 3033

# SMALLRIG 3033 Aluminum Alloy Mini Tripod Instruction Manual

Model: 3033

## 1. INTRODUCTION

Thank you for choosing the SMALLRIG 3033 Aluminum Alloy Mini Tripod. This instruction manual provides essential information for the safe and effective use of your new tripod. Please read this manual thoroughly before operation and retain it for future reference.

The SMALLRIG 3033 Mini Tripod is a versatile and compact support solution designed for various cameras, including DSLRs, mirrorless cameras, and smartphones. Its robust aluminum alloy construction, 360-degree ball head, and adjustable height features make it ideal for vlogging, desktop photography, and on-the-go video recording.

## 2. SAFETY INFORMATION

- Ensure all locking mechanisms are securely tightened before mounting any equipment.
- Do not exceed the maximum load capacity of 11 lbs (5 kg) to prevent damage to the tripod or attached devices.
- Avoid exposing the tripod to extreme temperatures, direct sunlight for prolonged periods, or corrosive substances.
- Keep the tripod away from children to prevent accidents.
- Handle with care to avoid dropping or impacting the tripod, which could compromise its structural integrity.

## 3. PACKAGE CONTENTS

Please verify that all items are present in your package:

- SMALLRIG 3033 Mini Tripod with Ball Head
- Arca-Swiss Compatible Quick Release Plate
- Hex Wrench (for adjustments)

## 4. PRODUCT OVERVIEW

Familiarize yourself with the main components of your SMALLRIG 3033 Mini Tripod:



Figure 1: Universal Aluminum Desktop Mini Tripod with labeled components including Arca-Swiss style QR Plate, Panning Knob, 360° Panning Dial, Ball Head Knob, Angle Control Ring, and Rubber Pad.

- **Arca-Swiss Style QR Plate:** For quick attachment and detachment of your camera.
- **Panning Knob:** Controls the 360° horizontal rotation of the ball head.
- **360° Panning Dial:** Provides precise measurements for panoramic photography.
- **Ball Head Knob:** Locks and unlocks the ball head for angle adjustments.
- **Angle Control Ring:** Adjusts the spread of the tripod legs for different heights.
- **Rubber Pad:** Non-slip feet for enhanced stability on various surfaces.

## 5. SETUP

### 5.1 Attaching the Quick Release Plate

1. Locate the Arca-Swiss compatible quick release plate.

2. Align the 1/4-inch screw on the plate with the tripod mount thread on your camera or device.
3. Turn the screw clockwise until the plate is securely fastened to your device.

## Standard Arca-Swiss Style Plate

Five seconds for a quick mount  
/ dismount of your device

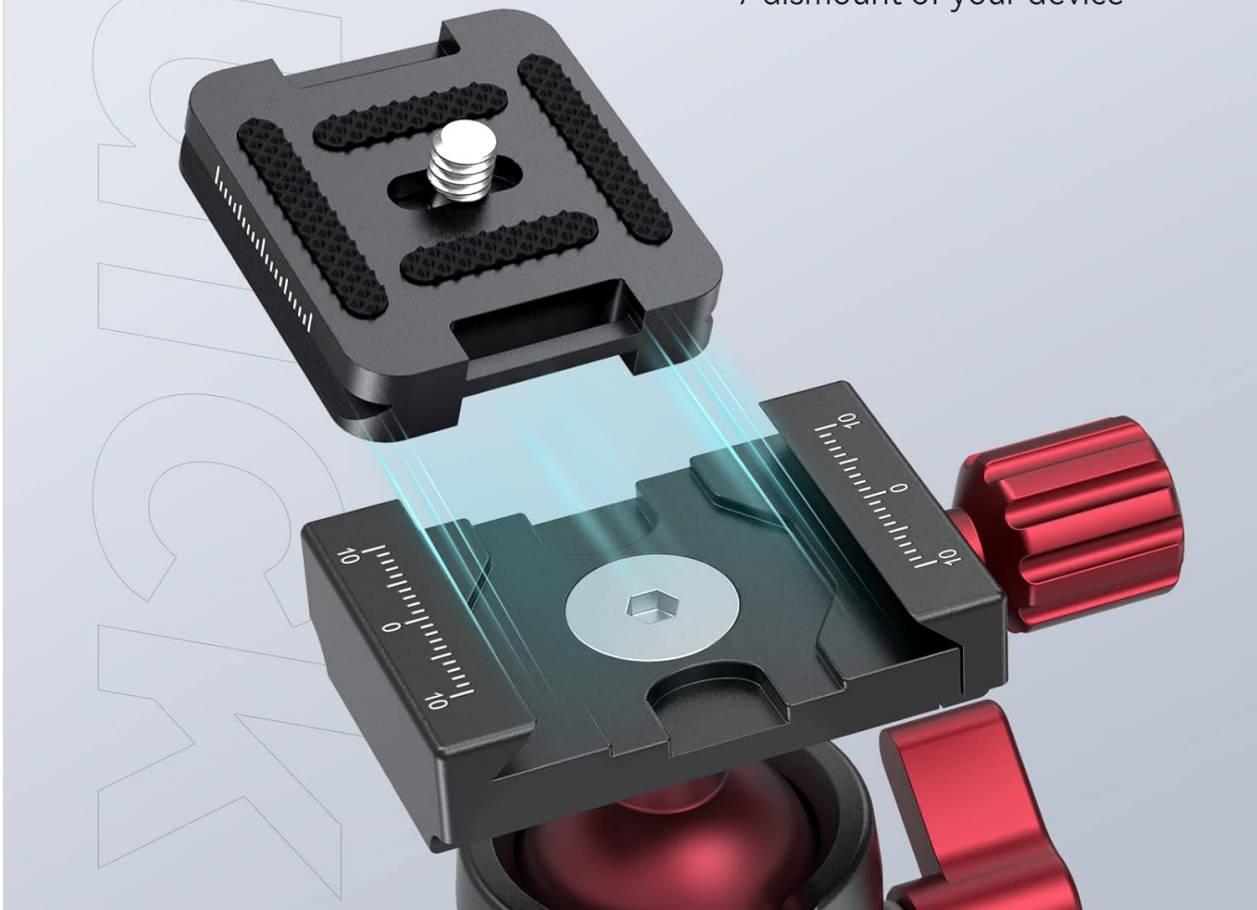


Figure 2: The Arca-Swiss style quick release plate is designed for fast and secure attachment to your camera or device.

### 5.2 Mounting Your Device to the Tripod

1. Ensure the quick release clamp on the ball head is open.
2. Slide your device (with the attached quick release plate) into the clamp.
3. Close the quick release clamp securely until you hear a click or feel it lock into place.



Figure 3: A DSLR camera is shown securely mounted on the SMALLRIG 3033 Mini Tripod, ready for use.

## 6. OPERATING INSTRUCTIONS

---

### 6.1 Adjusting Tripod Height

The tripod supports two levels of height adjustment:

1. **Minimum Height:** 140mm (approximately 5.5 inches)
2. **Maximum Height:** 210mm (approximately 8.3 inches)

To adjust the height, press the Angle Control Ring on each leg and spread the legs to the desired position. Ensure all legs are set to the same angle for stability.

# Two

## Adjustable Heights Available



Figure 4: The tripod can be adjusted to two distinct heights, offering flexibility for various shooting scenarios.

### 6.2 Adjusting Camera Angle (Ball Head)

1. Loosen the Ball Head Knob to free the ball head.
2. Adjust your camera to the desired angle.
3. Tighten the Ball Head Knob firmly to lock the camera in position.

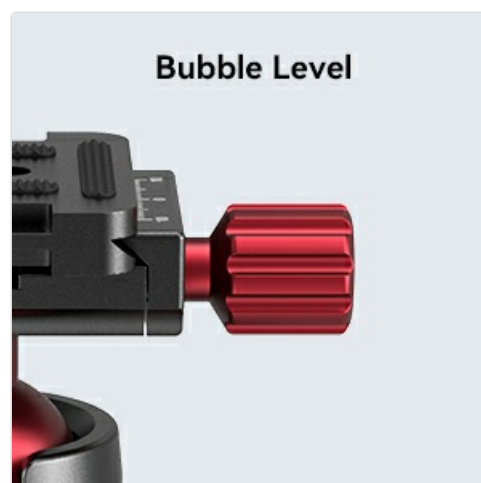




Figure 5: The Ball Head Knob allows for precise control over the camera's tilt and angle.

### 6.3 Panoramic Photography (360° Rotation)

1. Loosen the Panning Knob.
2. Rotate the camera horizontally to capture panoramic shots. The 360° Panning Dial provides degree markings for accurate alignment.
3. Tighten the Panning Knob to secure the horizontal position.



Figure 6: The 360° panoramic feature allows for seamless horizontal rotation, ideal for capturing wide landscapes or sweeping scenes.

## 7. MAINTENANCE

- Clean the tripod regularly with a soft, dry cloth. Do not use abrasive cleaners or solvents.
- Ensure all moving parts are free of dust and debris.
- Store the tripod in a dry, cool place away from direct sunlight and moisture.
- Periodically check all screws and bolts for tightness. Use the provided hex wrench for any adjustments if necessary.

## 8. TROUBLESHOOTING

- **Issue:** Tripod is unstable or wobbles.  
**Solution:** Ensure all legs are fully extended and locked into position. Verify that the Angle Control Rings are engaged. Check that the Ball Head Knob and Panning Knob are tightened. Ensure the load does not exceed the maximum capacity.
- **Issue:** Camera slides or moves after being locked.  
**Solution:** Re-tighten the Ball Head Knob and the quick release clamp. Ensure the quick release plate is securely attached to your camera.
- **Issue:** Legs are stiff or difficult to adjust.  
**Solution:** Check for any debris in the leg joints. Apply a small amount of silicone-based lubricant if necessary, avoiding contact with rubber parts.

## 9. SPECIFICATIONS

Feature	Specification
Model Name	Aluminum Tabletop Mini Tripod
Model Number	3033
Material	Aluminum Alloy, Rubber
Product Dimensions	2.28 x 2.68 x 19.69 inches (collapsed)
Item Weight	7.7 ounces (217 Grams)
Maximum Height	210 mm
Minimum Height	140 mm
Weight Limit	11 Pounds (5 kg)
Tripod Head Type	Ball Head
Panning Range	360°
Quick-Release Plate	For Arca Standard
Compatible Devices	Camera, iPhone, iPhone 11 (and similar devices)

## 10. WARRANTY

SMALLRIG products are covered by a limited warranty against defects in material and workmanship. Please refer to the official SMALLRIG website or your purchase documentation for specific warranty terms and conditions. Keep your proof of purchase for warranty claims.

## 11. SUPPORT

For technical support, product inquiries, or warranty service, please contact SMALLRIG customer service through their official website or the contact information provided with your purchase. You can also visit the [SMALLRIG Store on Amazon](#) for more information and products.

