

MONKEY LOOP 10176044

MONKEY LOOP Wall Prime Chrome Guitar Wall Mount Instruction Manual

Model: Wall Prime Chrome (10176044)

1. INTRODUCTION

Thank you for choosing the MONKEY LOOP Wall Prime Chrome Guitar Wall Mount. This manual provides essential information for the safe and correct installation, operation, and maintenance of your new guitar hanger. Please read these instructions carefully before use and retain them for future reference.

The MONKEY LOOP Wall Prime Chrome is a versatile wall mount designed for electric, acoustic, or classical guitars, as well as various types of basses. It features a reliable rotating hook system that adapts to the shape of the instrument's headstock and includes protective foam padding to prevent scratches and damage to your instrument.

2. SAFETY INFORMATION

- Ensure the mounting surface (wall) is structurally sound and capable of supporting the weight of the mount and your instrument.
- Do not exceed the maximum load capacity of 10 kilograms (approximately 22 lbs).
- Use appropriate tools and safety gear during installation.
- Keep small parts (screws, plugs) out of reach of children.
- Regularly inspect the mount for any signs of wear or damage. Do not use if damaged.

3. SETUP AND INSTALLATION

The MONKEY LOOP Wall Prime Chrome guitar mount is designed for quick and easy installation. It comes with the necessary screws and wall plugs.

Included Components:

- Wall Mount Unit
- Mounting Screws
- Wall Plugs
- Instruction Manual (this document)

Installation Steps:

1. **Choose Location:** Select a suitable wall location that is structurally sound and capable of supporting your instrument. Ensure there is enough space for your instrument to hang freely.
2. **Mark Drilling Points:** Hold the wall plate of the mount against the wall at the desired height. Use a pencil to mark the positions for the drilling holes.
3. **Drill Holes:** Using an appropriate drill bit for your wall type, drill holes at the marked positions. The diameter of the drill bit should match the provided wall plugs.
4. **Insert Wall Plugs:** Insert the wall plugs into the drilled holes until they are flush with the wall surface.
5. **Attach Wall Plate:** Align the wall plate with the inserted wall plugs. Insert the mounting screws through the wall plate and tighten them securely into the wall plugs. Do not overtighten.
6. **Assemble Hanger Arm:** Attach the hanger arm to the wall plate. Ensure it is firmly connected. The rotating hook system should be able to move freely.
7. **Verify Stability:** Before hanging your instrument, gently pull on the installed mount to ensure it is securely fastened to the wall.



Figure 1: Exploded view showing the wall plate, hanger arm, and mounting hardware.



Figure 2: Front view of the assembled MONKEY LOOP Wall Prime Chrome guitar wall mount.

4. OPERATING INSTRUCTIONS

Using the MONKEY LOOP Wall Prime Chrome mount is straightforward:

1. **Prepare Instrument:** Ensure your instrument is free of any accessories that might interfere with hanging (e.g., large straps, cables).
2. **Hang Instrument:** Carefully lift your guitar or bass and place its headstock between the two arms of the hanger. The rotating hook system will automatically adjust to securely cradle the headstock.
3. **Remove Instrument:** To remove, simply lift your instrument upwards and away from the hanger arms.

Important: Always ensure the instrument's headstock is fully seated within the hanger arms and that the weight is evenly distributed. Do not hang instruments exceeding 10 kg (22 lbs).

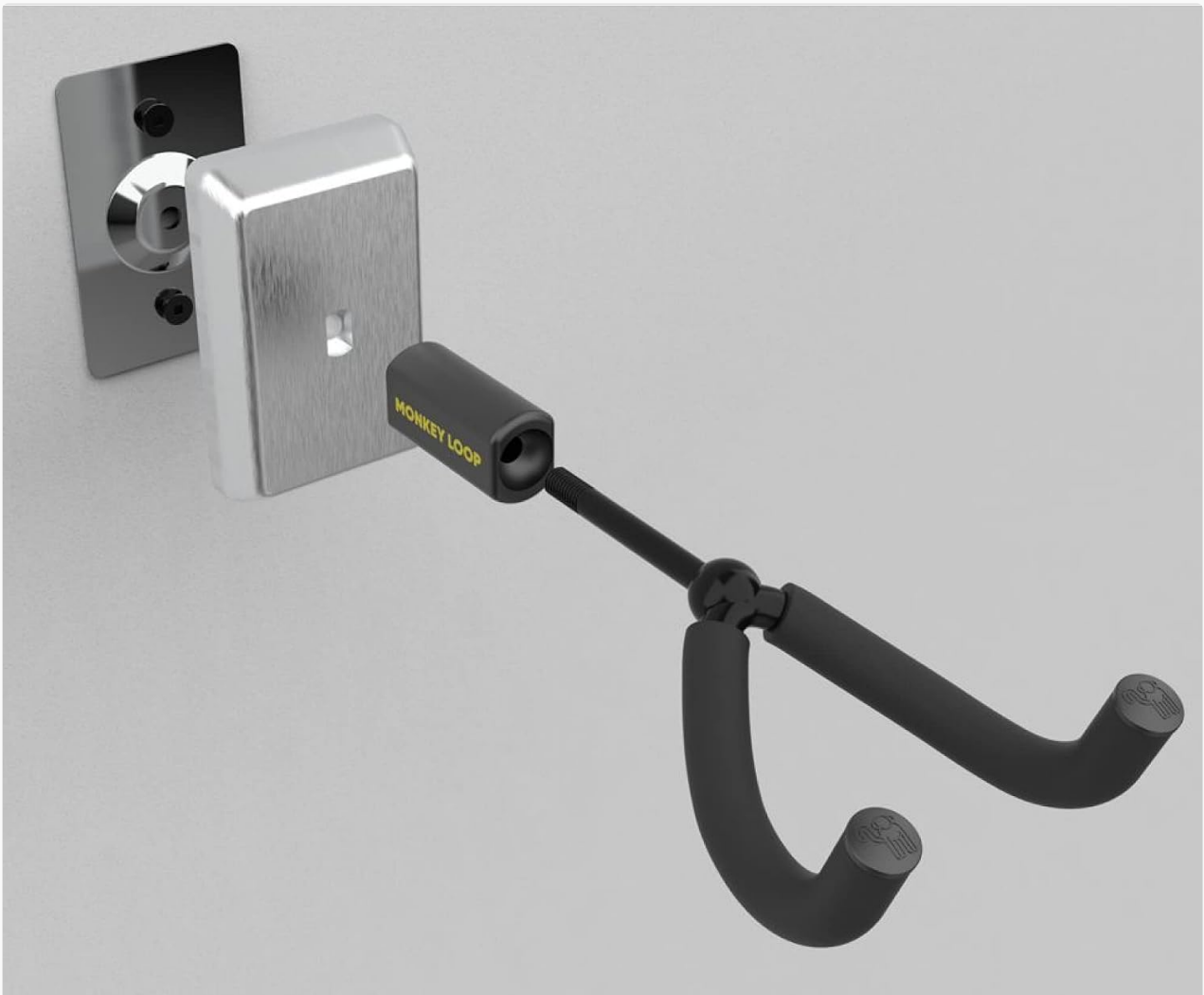


Figure 3: Acoustic guitar headstock resting securely in the mount's padded arms.



Figure 4: An electric guitar displayed on the wall mount.

5. MAINTENANCE

- **Cleaning:** Wipe the metal parts of the mount with a soft, dry cloth. For the foam padding, use a slightly damp cloth if necessary, and allow it to air dry completely before use. Avoid abrasive cleaners or solvents.
- **Inspection:** Periodically check the mounting screws for tightness. Ensure the foam padding on the hanger arms is intact and free from tears or excessive wear. Replace the mount if the padding is significantly

damaged to prevent scratching your instrument.

- **Environmental Conditions:** Avoid exposing the mount to extreme temperatures or high humidity, which could affect its material integrity or the instrument hanging on it.

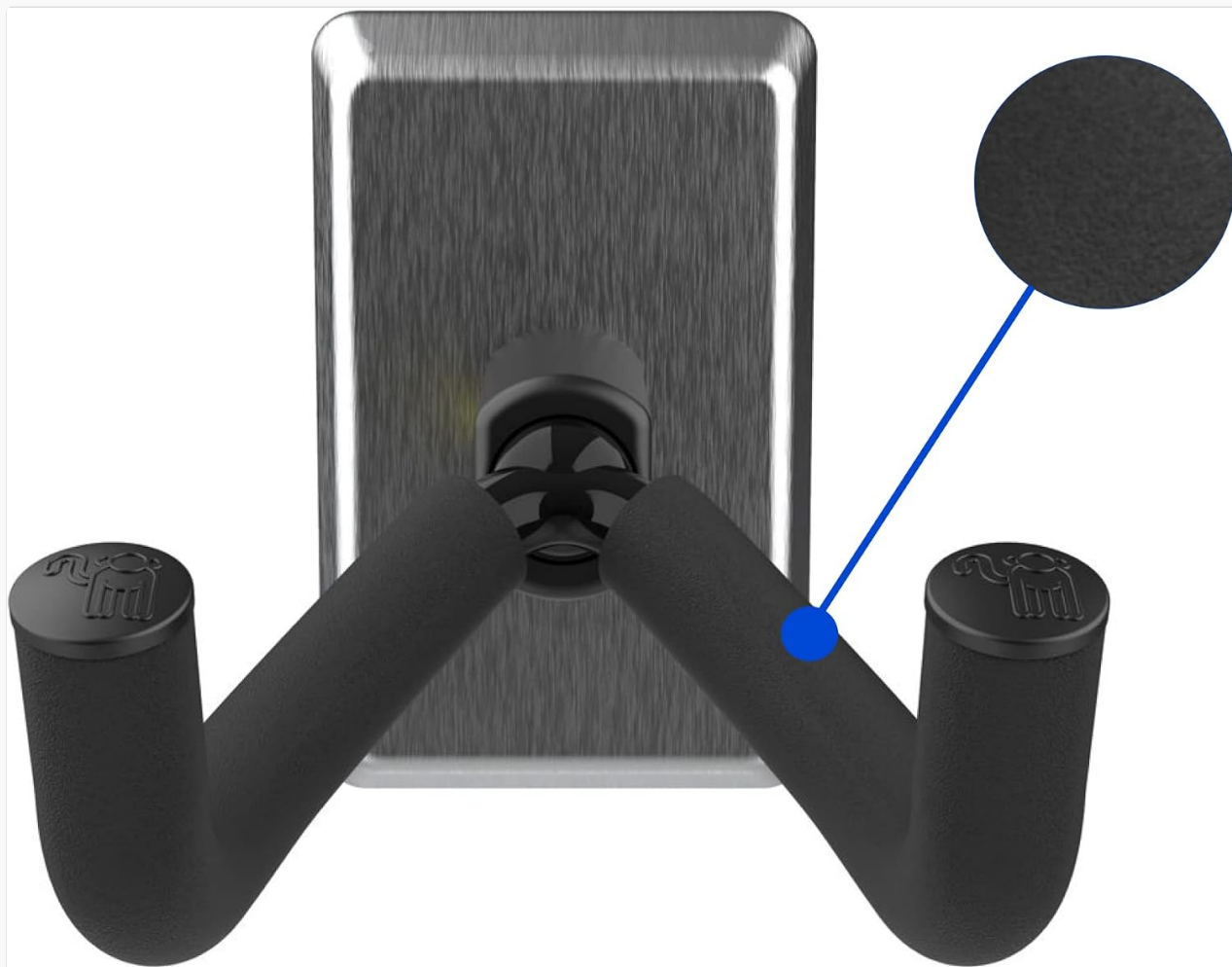


Figure 5: Detail of the protective foam padding on the hanger arms.

6. TROUBLESHOOTING

If you encounter any issues with your MONKEY LOOP Wall Prime Chrome mount, consider the following:

- **Mount feels loose:** Re-check the tightness of the mounting screws. Ensure the wall plugs are properly seated and the wall material is suitable for the installation.
- **Instrument not sitting securely:** Verify that the instrument's headstock is correctly positioned between the hanger arms. The rotating system should adjust automatically. Ensure the instrument's weight does not exceed the 10 kg limit.
- **Scratches on instrument:** Inspect the foam padding on the hanger arms for any damage or wear. If the padding is compromised, it may need replacement.

7. SPECIFICATIONS

Model Number	10176044
Brand	MONKEY LOOP
Product Dimensions (L x W x H)	6.9 x 16.3 x 24.7 cm (2.7 x 6.4 x 9.7 inches)
Item Weight	340 g (0.75 lbs)
Material	Metal (Chrome Plated)
Finish	Chrome
Mounting Type	Wall Mount
Maximum Load Capacity	10 kg (22 lbs)
Special Features	Non-slip, Easy to install, Adjustable (rotating hook system)
Recommended Use	Hanging electric, acoustic, or classical guitars and basses
Country of Origin	China

8. WARRANTY

No specific warranty information is provided for this product in the available data. For details regarding warranty coverage, please refer to your purchase receipt or contact the retailer where the product was purchased.

9. SUPPORT

For technical assistance or inquiries regarding your MONKEY LOOP Wall Prime Chrome guitar wall mount, please contact your retailer or visit the official MONKEY LOOP website for support resources.

You can find more information about MONKEY LOOP products by visiting their store [MONKEY LOOP Store](#)