

Antec NX410

Antec NX410 ATX Mid-Tower Case User Manual

Model: NX410

1. PRODUCT OVERVIEW

The Antec NX410 is an ATX mid-tower case designed for PC enthusiasts and builders. It features a tempered glass side panel for full interior visibility and comes equipped with pre-installed ARGB fans for efficient cooling and aesthetic appeal. This manual provides detailed instructions for assembly, operation, and maintenance.



Image: Antec NX410 ATX Mid-Tower Case in white, showcasing its tempered glass side panel and vibrant ARGB fans.

Key Features:

- **3 ARGB Fans Included:** Two 140mm ARGB fans are pre-installed in the front, and one 120mm ARGB fan is in the rear.
- **Tempered Glass Side Panel:** A tempered glass side panel offers a clear view of your internal components and RGB lighting.
- **High Efficiency Cooling Design:** The pre-installed 140mm ARGB front fans promote effective air convection for optimal cooling.
- **Grid Front Panel Design:** A staggered grid design on the front panel enhances aesthetics while maintaining heat

dissipation.

- **Motherboard Support:** Compatible with ATX, Micro-ATX, and ITX motherboard form factors.

Your browser does not support the video tag.

Video: An overview of the Antec NX410 Mid Tower Gaming Cabinet, showcasing its design and features.

2. SETUP AND INSTALLATION

2.1 Removing Side Panels

The tempered glass side panel is designed for easy access. It is secured with thumb screws and can be removed by lifting it off its hinges after opening. The opposite side panel is a solid metal panel, also secured with thumb screws.



Image: Antec NX410 case with the tempered glass side panel removed, showing the interior.

MAGNETIC & REMOVABLE TEMPERED GLASS SIDE PANEL

You can remove the side panel with ease by lifting it.
Screw-free design and steel covers keep it sturdy.

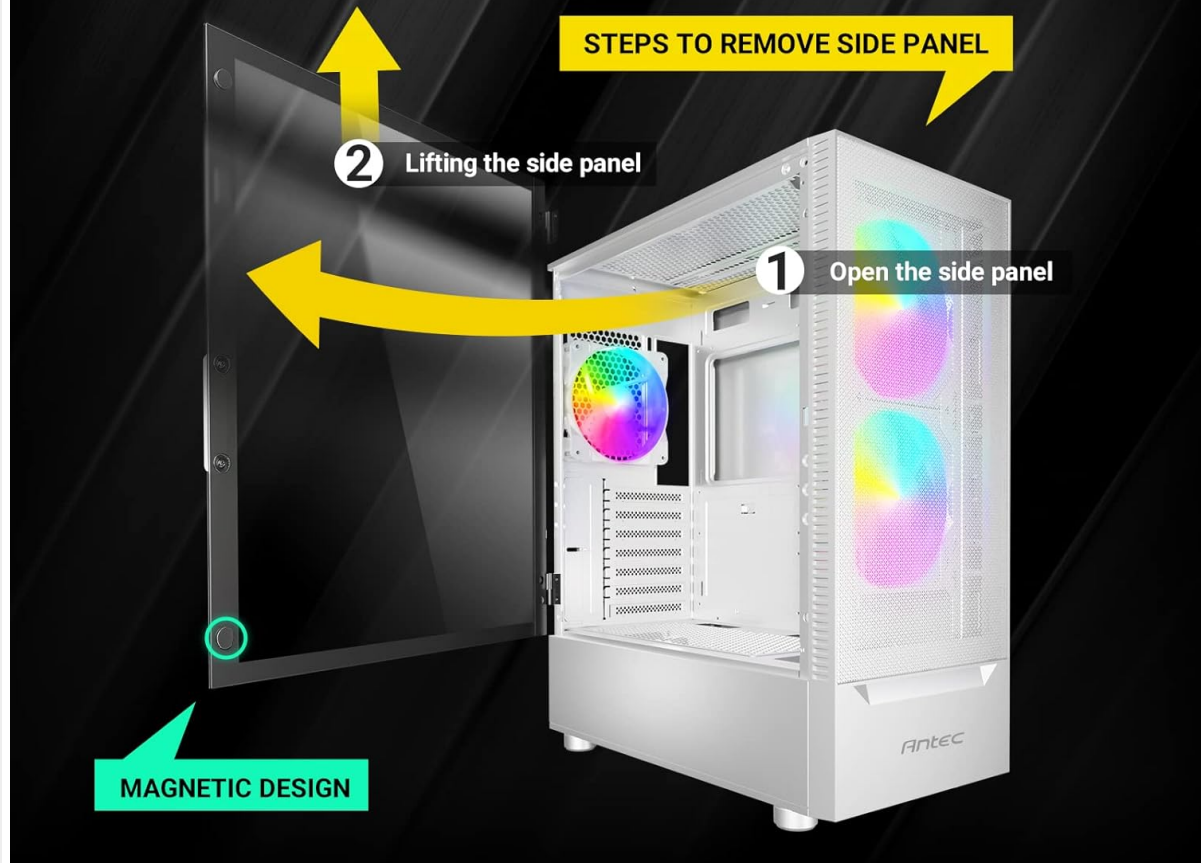


Image: Diagram illustrating the steps to remove the magnetic and removable tempered glass side panel. First, open the side panel, then lift it off.

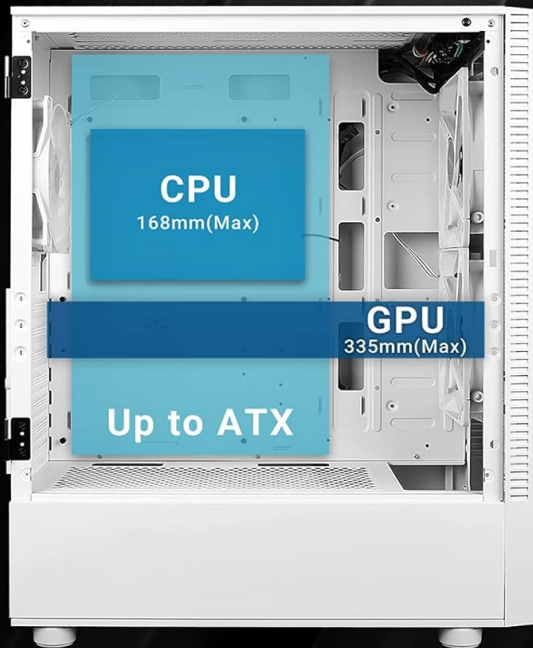
Caution: The tempered glass is fragile. Handle with care. To remove the side glass panel, lay it flat before removing it.

2.2 Motherboard and Component Installation

The NX410 supports ATX, Micro-ATX, and ITX motherboards. Ensure your motherboard fits within the case dimensions of 390mm x 210mm x 485mm.

- **Max CPU Cooler Height:** 168 mm
- **Max GPU Length:** 335 mm
- **Max PSU Length:** 165 mm

READY FOR PERFORMANCE



● Motherboard Support	Up to ATX	● 3.5" HDD/ 2.5" SSD (Convertible)	2/1
● Max CPU Cooler Height	168 mm	● 2.5" SSD	3
● Max GPU Length	335 mm	● Max PSU Length	165 mm

Image: Internal layout of the Antec NX410 case, highlighting maximum clearances for CPU cooler (168mm), GPU (335mm), and motherboard support (up to ATX).

2.3 Drive Bays

The case provides ample storage options:

- 3.5" HDD / 2.5" SSD (Convertible): 2/1 slots
- 2.5" SSD: 3 slots

FAN INSTALLATION



Image: Rear interior view of the Antec NX410 case, indicating locations for SSDs, HDDs, and PSU.

2.4 Fan Installation and Support

The case comes with 3 ARGB fans pre-installed: two 140mm in the front and one 120mm in the rear. Additional fan support is available:

- **Front:** Up to 3 x 120mm or 3 x 140mm fans (up to 360mm radiator)
- **Top:** Up to 2 x 120mm or 2 x 140mm fans (up to 280mm radiator)
- **Rear:** 1 x 120mm fan (up to 120mm radiator)

SUPPORTS UP TO 6 FANS

Included Fan(s) : 2 X 140 mm ARGB fan in front & 1 X 120 mm ARGB fan in rear.

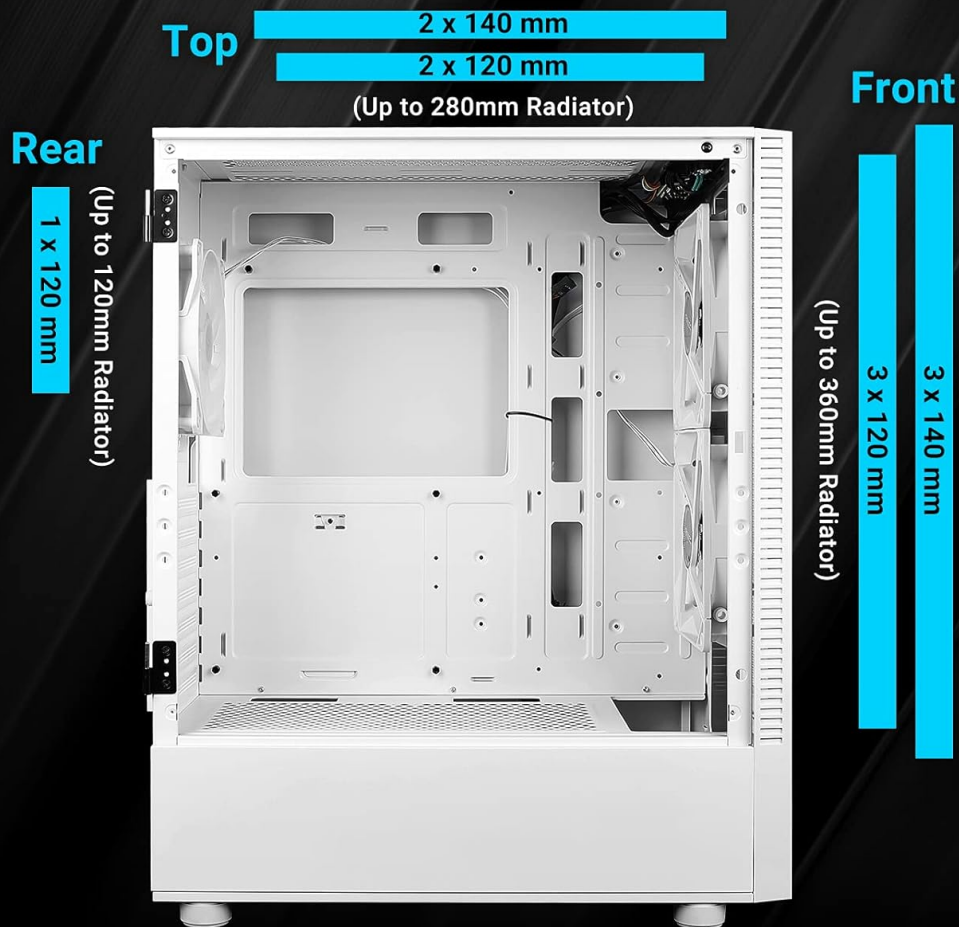


Image: Diagram illustrating the fan and radiator support configurations for the front, top, and rear of the Antec NX410 case.

Important Fan Connection: If fans work in tandem but haven't connected the main fan with the secondary fans, the secondary fans will not function. The fan kit works in sync with the motherboard for ARGB lighting.

CREATE FOR VALUE & FUNCTION

The NX410 White mid-tower gaming case effortlessly combines a bevy of in-demand features:

USB 3.0 connectivity, ample storage drive bays, room for expansion, and includes one ARGB LED fans in both front and rear. With support for up to a 360 mm liquid cooling radiator in front and 280mm on top, NX410 White is easy to build with and easy to cool.



Image: Diagram detailing the fan installation process, showing how major and secondary fans connect via 4-pin headers. A warning about secondary fans not functioning if the main fan is not connected is included.

For optimal cooling, ensure proper fan orientation for intake and exhaust airflow.

2.5 Cable Management

The case offers various tie-down points and cutouts behind the motherboard tray to facilitate clean cable routing, improving airflow and aesthetics.

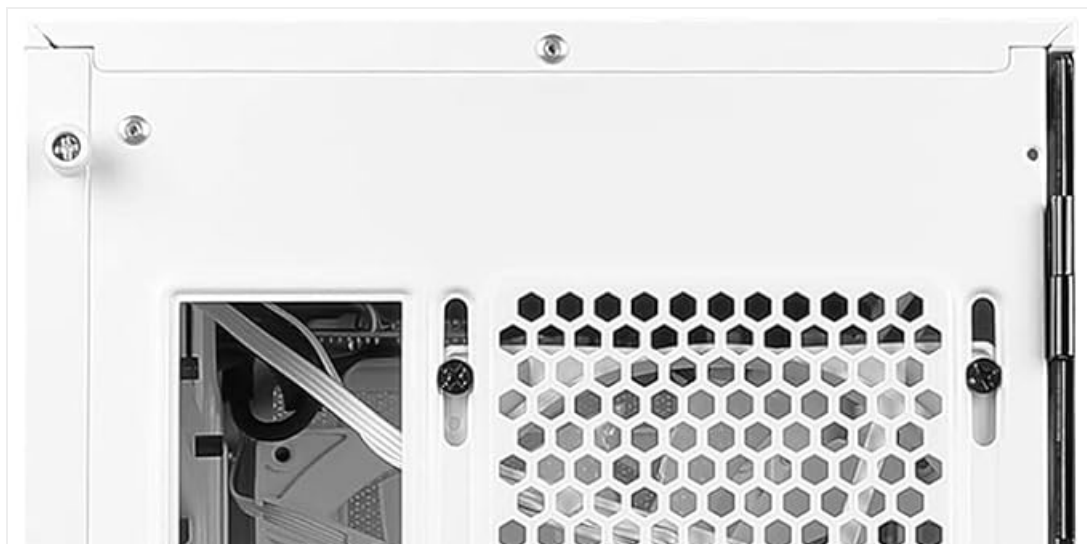




Image: Rear interior view of the Antec NX410 case, showing pre-routed cables and space for cable management behind the motherboard tray.

3. OPERATING INSTRUCTIONS

3.1 Front I/O Ports

The top panel features convenient I/O ports for easy access:

- **Power Button**
- **LED Control Button:** A single press changes the front panel's ARGB lighting effect.
- **USB 3.0 x 1**
- **USB 2.0 x 2**
- **HD-AUDIO (Headphone and Microphone Jacks)**



Image: Close-up view of the top I/O ports on the Antec NX410 case, including power, LED control, USB 3.0, USB 2.0, and HD-Audio jacks.

3.2 ARGB Lighting Control

The pre-installed ARGB fans can be controlled via the LED control button on the top I/O panel. A single press cycles through various lighting effects. For motherboard synchronization, ensure the ARGB controller is properly connected to your motherboard's ARGB header.

LED CONTROL BUTTON ON THE FRONT PANEL

Just a single press to change the front panel's ARGB lighting effect at will.



Image: Close-up of the LED control button on the front panel of the Antec NX410 case, used to change ARGB lighting effects.

4. MAINTENANCE

4.1 Dust Filter Cleaning

The Antec NX410 includes dust filters to help maintain a clean interior and optimal airflow. Regularly clean these filters to prevent dust buildup.

- **Top Dust Filter:** The top panel features a removable magnetic dust filter. Gently lift and remove it for cleaning.
- **PSU Dust Filter:** A removable dust filter is located at the bottom of the case, beneath the power supply unit. Slide it out for cleaning.

Use a soft brush or compressed air to remove dust from the filters. Washable filters can be rinsed with water and allowed to dry completely before reinstallation.

4.2 Tempered Glass Care

To clean the tempered glass side panel, use a soft, lint-free cloth and a non-abrasive glass cleaner. Avoid harsh chemicals or abrasive materials that could scratch the glass.

5. TROUBLESHOOTING

5.1 ARGB Lights Not Working

If your ARGB lights are not functioning:

- **Check Fan Connections:** Ensure all ARGB fans are correctly connected to the ARGB controller, and the controller is properly powered and connected to the motherboard (if using motherboard sync). Refer to the "Fan Installation and Support" section for connection details.
- **LED Control Button:** Press the LED control button on the top I/O panel to cycle through lighting modes. If no lights appear, verify power connections.

5.2 Fan Noise

If you experience unusual fan noise:

- **Check for Obstructions:** Ensure no cables or other components are interfering with the fan blades.
- **Mounting Screws:** Verify that all fan mounting screws are tightened securely to prevent vibrations.
- **Dust Buildup:** Clean any dust buildup on fan blades or filters, as excessive dust can cause imbalance and noise.

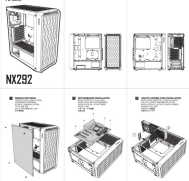
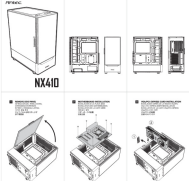
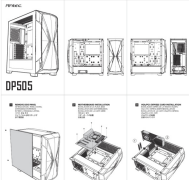
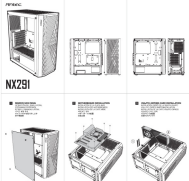
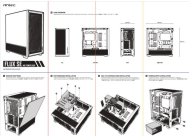
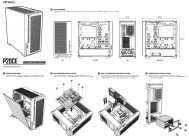
6. SPECIFICATIONS

Feature	Detail
Brand	Antec
Model Name	NX410 W
Item Model Number	9734088000
Case Type	Mid Tower
Motherboard Compatibility	ATX, Micro ATX, ITX
Item Weight	11.2 pounds
Product Dimensions (LxWxH)	15.35 x 8.27 x 19.09 inches
Material	Tempered Glass
Cooling Method	Air
Number of USB 3.0 Ports	1
Number of USB 2.0 Ports	2
Power Supply Mounting Type	Bottom Mount or Rear Mount

7. WARRANTY AND SUPPORT

For warranty information and technical support, please refer to the official Antec website or contact Antec customer service directly. Keep your proof of purchase for warranty claims.
You can visit the [Antec Store on Amazon](#) for more product information and support resources.

Related Documents - NX410

 <p>Antec NX292 ATX Gaming PC Case</p>	<p>Antec NX292 ATX Gaming PC Case - Manual and Overview</p> <p>User manual and overview for the Antec NX292 ATX mid-tower gaming PC case, highlighting its features like fixed RGB fans and tempered glass side panel, along with storage support for HDD and SSD.</p>
 <p>Antec NX410 ATX Mid-Tower PC Case</p>	<p>Antec NX410 ATX Mid-Tower PC Case - Installation Manual and Overview</p> <p>A comprehensive guide to the Antec NX410 ATX mid-tower computer case, covering specifications, features, and detailed installation instructions for PC builders. Learn how to assemble your system with this informational manual.</p>
 <p>Antec DP505 PC Case</p>	<p>Antec DP505 PC Case - Gaming Mid Tower with EATX Support</p> <p>Antec DP505 is a white gaming mid-tower PC case featuring EATX support, Type-C Gen2, ARGB fans, PWM control, radiator support, GPU bracket, and tempered glass.</p>
 <p>Antec NX291 ATX Tower Gaming Case</p>	<p>Antec NX291 ATX Tower Gaming Case - User Manual</p> <p>User manual and product overview for the Antec NX291 ATX Tower gaming case, detailing its features such as fixed mode RGB fans, tempered glass side panel, and budget-friendly design.</p>
 <p>Antec Flux SE PC Case</p>	<p>Antec Flux SE PC Case User Manual and Overview</p> <p>Comprehensive guide to the Antec Flux SE mid-tower PC case, covering features, specifications, and installation instructions. Learn about its airflow design, cooling support, and build quality for optimal PC performance.</p>
 <p>Antec P20CE PC Case</p>	<p>Antec P20CE PC Case User Manual and Specifications</p> <p>Comprehensive user manual and technical specifications for the Antec P20CE E-ATX gaming PC case. Learn about installation, features, cooling support, and component clearances.</p>