

Cellet XG01

Cellet Wireless V5 Bluetooth Earbuds User Manual

Model: XG01

1. PRODUCT OVERVIEW

The Cellet Wireless V5 Bluetooth Earbuds (Model XG01) provide a high-quality audio experience with wireless convenience. Designed for compatibility with devices like the General Mobile GM 9 Pro, these in-ear headphones feature advanced Bluetooth technology for stable connections and clear sound. The compact design includes a portable charging case for extended use.

Key Features:

- **Wireless Bluetooth V5.2 Technology:** Ensures a stable connection with reduced power consumption.
- **Noise-Isolating Design:** Delivers clear audio quality.
- **Built-in Dual Microphones:** Facilitates clear communication during calls.
- **Multifunctional Touch Control:** Manage music playback, calls, and voice notifications.
- **Portable Charging Case:** Provides convenient charging and storage.
- **Voice Notifications:** Informs about incoming calls, battery level, and pairing status.
- **IPX5 Waterproof Level:** Offers protection against sweat and light splashes.

**ULTRA-SMALL AND LIGHTWEIGHT
EARBUDS WITH HIGH QUALITY SOUNDS**

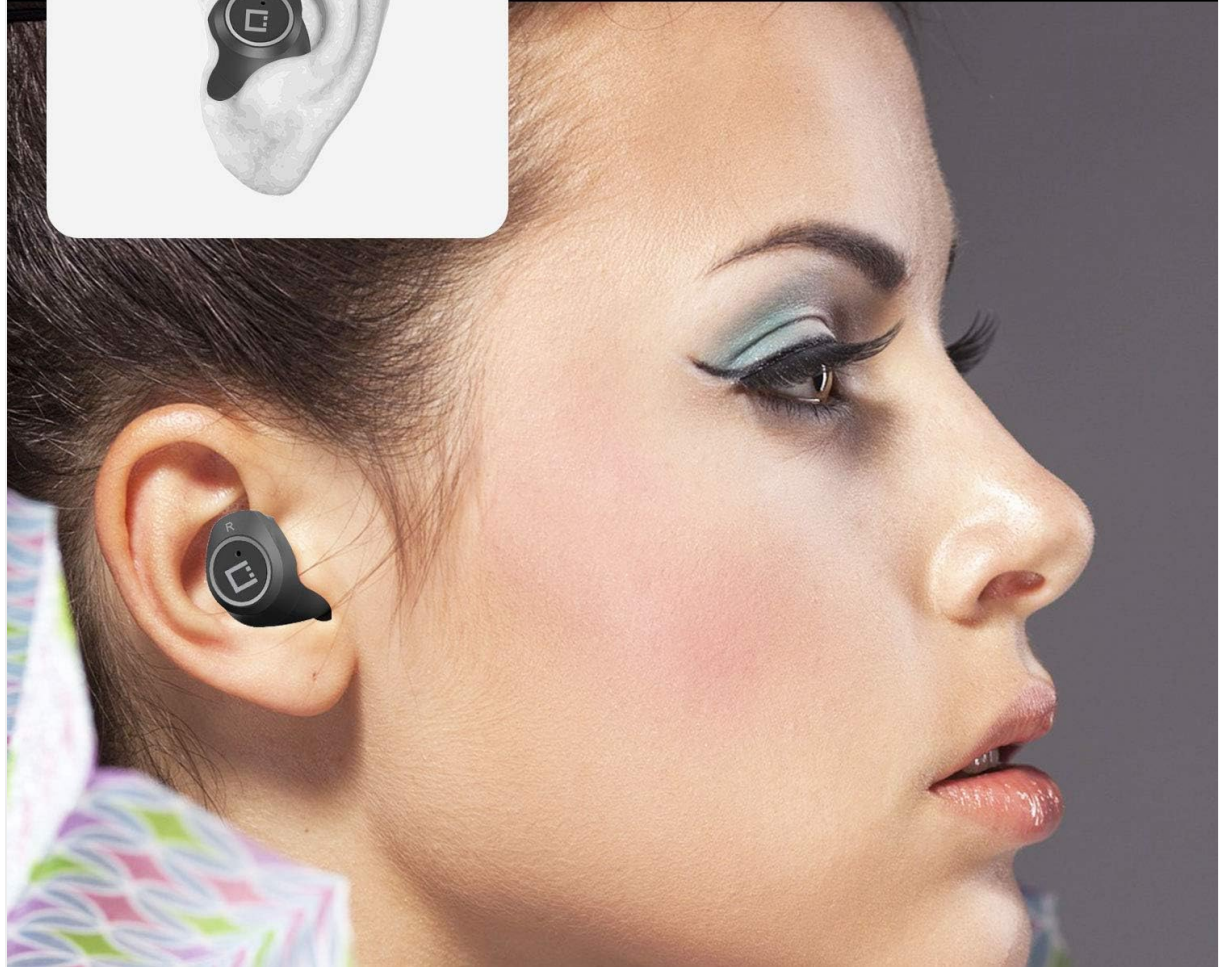


Image: An earbud comfortably placed in a person's ear, illustrating its compact and lightweight form factor.



Image: Multiple scenarios showing individuals utilizing the earbuds for different activities, including answering calls while driving, cycling, and casual use.

2. PACKAGE CONTENTS

Please check the package for the following items:

- Cellet Wireless Earbuds (Left and Right)
- Charging/Storage Case
- Type-C USB Charging Cable
- Earbud Tips (Small, Medium, Large sizes)
- User Manual (This document)



Image: A visual representation of all items included in the product package: the charging case, two earbuds, a user guide, a Type-C charging cable, and sets of small, medium, and large ear caps.

3. SETUP

3.1 Charging the Earbuds and Case

Before first use, fully charge the earbuds and the charging case. Connect the provided Type-C USB cable to the charging case and a power source. The LED indicator on the case will show charging status. The earbuds will charge automatically when placed inside the powered case.

- **Charging Case Battery:** 300mAh
- **Earbuds Battery:** 45mAh * 2
- **Charging Time:** Approximately 1.5 hours

COMPATIBLE TO

IPHONE 11, 11 PRO, 11 PRO MAX XS MAX, XS, XR, 8/8 PLUS,
SAMSUNG GALAXY NOTE 9, NOTE 8, GALAXY S10/S10 PLUS/ S10E, LG V30S THIN Q, LG V30,
GOOGLE PIXEL 2, PIXEL 2 XL, IPODS, IPADS, TABLETS AND OTHER WIRELESS ENABLED DEVICES



MP3



Smartphones



Tablets

Image: The earbuds resting in their charging case, with a visual representation of power flow and key charging specifications such as battery capacities and charging time.

3.2 Pairing with Your Device

Follow these steps to pair your earbuds with a Bluetooth-enabled device:

1. **Power On:** Remove both earbuds from the charging case. They will automatically power on, indicated by a blue light.
2. **Earbud Sync:** Wait for the voice prompt "Pairing, Left Channel, Right Channel." This confirms the earbuds are synced with each other.
3. **Device Bluetooth:** On your smartphone or other device, go to the Bluetooth settings menu.
4. **Search and Connect:** Search for available devices and select "Cellet_EB600" from the list.
5. **Confirmation:** Once connected, both earbuds will flash blue approximately every 8 seconds, indicating a successful connection.

4. OPERATING THE EARBUDS

The earbuds feature multifunctional touch controls for easy operation.

4.1 Multifunctional Button Controls

Each earbud is equipped with a touch-sensitive multifunctional button. The specific functions are:

- **Music Playback:** Tap once to pause or resume music.
- **Answer/End Call:** Tap once to answer an incoming call or end an ongoing call.
- **Reject Call:** Press and hold for 2 seconds to reject an incoming call.
- **Activate Voice Assistant:** Triple-tap to activate your device's voice assistant (e.g., Siri, Google Assistant).



Image: A detailed view of the earbuds within their charging case, highlighting the location of the right and left earbud's multi-function buttons and LED power indicators.

4.2 Voice Notifications

The earbuds provide audible voice notifications for the following events:

- Incoming calls
- Battery level status
- Successful pairing with a device

5. MAINTENANCE

Proper maintenance ensures the longevity and optimal performance of your earbuds.

- **Cleaning:** Regularly clean the earbuds and charging case with a soft, dry cloth. Avoid using harsh chemicals or abrasive materials.

- **Storage:** When not in use, store the earbuds in their charging case to protect them from dust and damage.
- **Charging:** Charge the case and earbuds regularly, even if not used frequently, to maintain battery health. Avoid extreme temperatures during charging and storage.
- **Water Exposure:** While the earbuds have an IPX5 rating (resistant to light splashes and sweat), avoid submerging them in water or exposing them to heavy rain. Ensure they are dry before placing them back in the charging case.

6. TROUBLESHOOTING

If you encounter issues with your earbuds, try the following solutions:

6.1 Earbuds Not Pairing

- Ensure both earbuds are fully charged.
- Make sure Bluetooth is enabled on your device.
- Turn off Bluetooth on other nearby devices to avoid interference.
- Forget "Cellet_EB600" from your device's Bluetooth list and attempt to pair again following the steps in Section 3.2.
- Place earbuds back in the charging case, close the lid, wait a few seconds, then remove them to reset.

6.2 No Sound or Intermittent Audio

- Check the volume level on both your device and the earbuds.
- Ensure the earbuds are properly connected to your device.
- Move closer to your device to ensure you are within the 10-meter Bluetooth range.
- Restart your device and re-pair the earbuds.

6.3 Charging Issues

- Verify that the charging cable is securely connected to both the case and the power source.
- Try using a different Type-C USB cable and power adapter.
- Ensure the charging contacts on the earbuds and inside the case are clean and free of debris.

7. SPECIFICATIONS

Feature	Specification
Model Name	XG01
Bluetooth Version	V5.2
Bluetooth Distance	10 meters (33 feet)
Earbud Battery Capacity	45mAh * 2
Charging Case Battery Capacity	300mAh
Charging Time	Approx. 1.5 hours
Music Playback Time	3-4 hours
Talk Time	3-4 hours
Standby Time	150 hours

Waterproof Level	IPX5
Connectivity Technology	Wireless, Bluetooth
Ear Placement	In Ear
Control Method	Touch
Microphone	Included
Noise Control	Active Noise Cancellation
Material	Aluminum, Plastic, Stainless Steel
Item Weight	4 ounces
Product Dimensions	1 x 1 x 1 inches

CONVENIENT CHARGING/STORAGE CASE

Bluetooth Version: V5.0
Bluetooth Distance: 10M
Earbuds Battery: 45mAh*2
Waterproof Level: IPX5

Charging Case Battery: 300mAh
Charging Time: About 1.5 hours
Music Playing Time: 3-4 hours
Calling Talk Time: 3-4 hours



Image: An illustration demonstrating the broad compatibility of the earbuds with different operating systems and devices, including Apple, Android, and Windows platforms, as well as MP3 players, smartphones, and tablets.

8. WARRANTY AND SUPPORT

Specific warranty information for the Cellet Wireless V5 Bluetooth Earbuds (Model XG01) is not provided within this manual. For details regarding warranty coverage, technical support, or customer service, please refer to the manufacturer's official website or contact the retailer where the product was purchased.