

## Cellet EB600

# Cellet Wireless Bluetooth Earbuds EB600 User Manual

Model: EB600 (also known as XG01)

## 1. INTRODUCTION

Thank you for choosing the Cellet Wireless Bluetooth Earbuds EB600. These earbuds are designed to provide a high-quality audio experience with the convenience of wireless connectivity. This manual will guide you through the setup, operation, and maintenance of your new earbuds.

## 2. PACKAGE CONTENTS

Please check the package for the following items:

- Cellet Wireless Bluetooth Earbuds (Left and Right)
- Portable Charging Case
- USB-C Charging Cable
- Earbud Tips (Small, Medium, Large)
- User Manual (this document)



Image: Contents of the Cellet Wireless Bluetooth Earbuds EB600 package.

### 3. PRODUCT OVERVIEW

The Cellet EB600 earbuds feature a compact design with a multi-function button on each earbud for easy control. The included charging case provides convenient storage and recharges the earbuds on the go.



Image: Cellet Wireless Bluetooth Earbuds EB600 with their charging case.



Image: Detailed diagram highlighting the LED power indicators and multi-function buttons on the earbuds and charging case.

## 4. SETUP

### 4.1 Charging the Earbuds and Case

Before first use, fully charge the earbuds and the charging case. Place the earbuds into the charging case. Connect the USB-C charging cable to the charging case and a power source. The LED indicators on the case and earbuds will show charging status.

- **Charging Case Battery:** 300mAh
- **Earbuds Battery:** 45mAh \* 2
- **Charging Time:** Approximately 1.5 hours



# COMPATIBLE TO

IPHONE 11, 11 PRO, 11 PRO MAX XS MAX, XS, XR, 8/8 PLUS,  
SAMSUNG GALAXY NOTE 9, NOTE 8, GALAXY S10/S10 PLUS/ S10E, LG V30S THIN Q, LG V30,  
GOOGLE PIXEL 2, PIXEL 2 XL, IPODS, IPADS, TABLETS AND OTHER WIRELESS ENABLED DEVICES



MP3



Smartphones



Tablets

Image: The charging case with earbuds, illustrating the charging process and displaying key battery specifications.

## 4.2 Pairing with Your Device

Follow these steps to pair your earbuds with a Bluetooth-enabled device:

1. Remove both earbuds from the charging case. They will automatically power on. A blue light will indicate they are powered on.
2. Wait for the voice prompt "Pairing, Left Channel, Right Channel." This confirms the earbuds are synced with each other.
3. On your device (smartphone, tablet, etc.), go to the Bluetooth settings menu.
4. Search for available devices and select "**Cellet\_EB600**" from the list.
5. Once connected, both earbuds will flash blue approximately every 8 seconds, indicating a successful connection.

## CONVENIENT CHARGING/STORAGE CASE

Bluetooth Version: V5.0  
Bluetooth Distance: 10M  
Earbuds Battery: 45mAh\*2  
Waterproof Level: IPX5

Charging Case Battery: 300mAh  
Charging Time: About 1.5 hours  
Music Playing Time: 3-4 hours  
Calling Talk Time: 3-4 hours



Image: The earbuds are compatible with a wide range of Bluetooth-enabled devices, including iPhones, Android phones, tablets, and MP3 players.

## 5. OPERATING INSTRUCTIONS

### 5.1 Wearing the Earbuds

Select the earbud tips that provide the most comfortable and secure fit for your ears. Insert the earbuds gently into your ear canal.



**ULTRA-SMALL AND LIGHTWEIGHT  
EARBUDS WITH HIGH QUALITY SOUNDS**

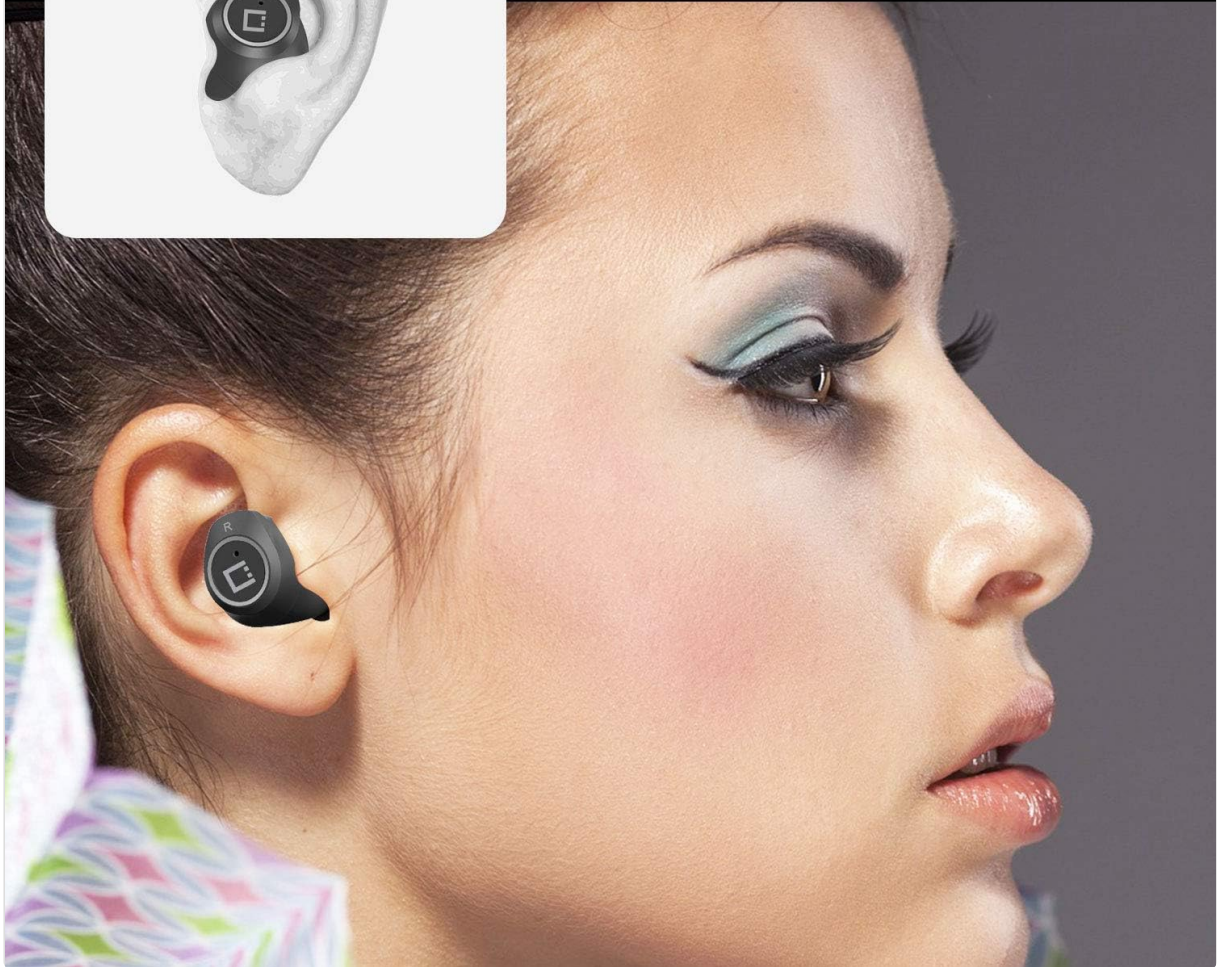


Image: Illustration of an earbud correctly placed in the ear for optimal sound and comfort.

## **5.2 Multifunction Button Controls**

Each earbud features a multifunction button (touch control) for various operations:

- **Play/Pause Music:** Single press the button on either earbud.
- **Answer/End Call:** Single press the button on either earbud during an incoming call or active call.
- **Reject Call:** Press and hold the button on either earbud during an incoming call.
- **Activate Voice Assistant:** Triple press the button on either earbud (if supported by your device).
- **Next Track:** Double press the right earbud button.
- **Previous Track:** Double press the left earbud button.

## **5.3 Voice Notifications**

The earbuds provide voice notifications for incoming calls, battery level, and pairing status.



## LED POWER INDICATORS ON CHARGING CASE AND EARBUDS



Image: Demonstrates the versatility of the earbuds for communication and entertainment in different daily activities.

## 6. MAINTENANCE

### 6.1 Cleaning

Regularly clean the earbuds and charging case with a soft, dry cloth. Do not use harsh chemicals or abrasive materials. Ensure the charging contacts on both the earbuds and the case are clean and free of debris.

### 6.2 Storage

When not in use, store the earbuds in their charging case to protect them from dust and damage. Store in a cool, dry place away from extreme temperatures.

## 7. TROUBLESHOOTING

- **Earbuds not powering on:** Ensure the earbuds are charged. Place them in the charging case and connect the case to a power source.
- **Earbuds not pairing:** Make sure Bluetooth is enabled on your device. Ensure the earbuds are removed from the case and in pairing mode. Forget previous pairings on your device and try pairing again.
- **No sound from one earbud:** Try placing both earbuds back into the charging case, then remove



them simultaneously to re-sync. Check your device's audio settings.

- **Charging case not charging:** Verify the USB-C cable is securely connected to both the case and the power source. Try a different cable or power adapter.
- **Poor sound quality:** Ensure the earbuds are properly seated in your ears. Check for any obstructions in the earbud nozzles. Move closer to your paired device to avoid interference.

## 8. SPECIFICATIONS

Model Name	EB600 (XG01)
Bluetooth Version	V5.0
Wireless Communication Technology	Bluetooth
Connectivity Technology	Wireless
Ear Placement	In Ear
Control Method	Touch / Multifunction Button
Talk Time	Up to 4 hours
Music Playback Time	Up to 6+ hours
Standby Time	Up to 150 hours
Charging Case Battery	300mAh
Earbuds Battery	45mAh * 2
Waterproof Level	IPX5
Bluetooth Distance	Up to 10 meters (33 feet)
Item Weight	4 ounces
Product Dimensions	1 x 1 x 1 inches (earbud dimensions)



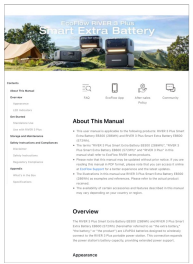

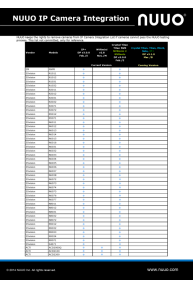
## 9. SAFETY INFORMATION

- Do not expose the earbuds or charging case to extreme temperatures, moisture, or corrosive materials.
- Avoid dropping or subjecting the device to strong impacts.
- Do not attempt to disassemble or modify the product. This may void the warranty and cause damage.
- Keep out of reach of children and pets.
- Use only the provided charging cable or a certified equivalent.
- Prolonged exposure to loud sounds may cause hearing damage. Adjust volume to a safe level.

## 10. WARRANTY AND SUPPORT

For warranty information or technical support, please refer to the documentation provided at the time of purchase or contact your retailer. Keep your proof of purchase for warranty claims.

Related Documents - EB600

	<p><a href="#">Champion EB600 Egg Cooker - Healthy Stainless Steel Cooking</a></p> <p>Discover the Champion EB600 Egg Cooker, a healthy and efficient way to cook eggs using stainless steel. Features a 400W power, 1-7 egg capacity, 30-minute timer, automatic shut-off, and included accessories. Learn more about its specifications and benefits.</p>
	<p><a href="#">EcoFlow RIVER 3 Plus Portable Power Station User Manual &amp; Specifications</a></p> <p>Detailed user manual and technical specifications for the EcoFlow RIVER 3 Plus portable power station, covering models EB300 (286Wh) and EB600 (572Wh). Includes features, port details, battery information, operating temperatures, and compliance statements (FCC, IC, CE, RoHS, WEEE).</p>
	<p><a href="#">EcoFlow RIVER 3 Plus Smart Extra Battery User Manual</a></p> <p>Comprehensive user manual for the EcoFlow RIVER 3 Plus Smart Extra Battery, covering specifications, operation, safety, storage, maintenance, and regulatory compliance for models EB300 (286Wh) and EB600 (572Wh).</p>
	<p><a href="#">SanMar Sports Fishing &amp; Outdoor Apparel Catalog</a></p> <p>Discover a curated selection of fishing and outdoor apparel from top brands including Carhartt, Eddie Bauer, Port Authority, Sport-Tek, Cornerstone Workwear, and New Era, available through SanMar Sports.</p>
	<p><a href="#">NUUO IP Camera Integration List</a></p> <p>A comprehensive compatibility list detailing NUUO's IP camera integration, including supported models and firmware versions from various manufacturers for NUUO's video management systems.</p>