

Cellet XG01

Cellet Wireless V5 Bluetooth Earbuds (Model XG01) User Manual

Your guide to setting up and using your new wireless earbuds.

INTRODUCTION

Thank you for choosing the Cellet Wireless V5 Bluetooth Earbuds, Model XG01. These earbuds are designed to provide a high-quality audio experience with the convenience of wireless connectivity. This manual will guide you through the setup, operation, and maintenance of your device.



Image: Cellet Wireless V5 Bluetooth Earbuds and their charging case. The earbuds are black, compact, and designed for in-ear use, with the charging case open to show the earbuds nestled inside.

WHAT'S IN THE BOX

Upon unboxing your Cellet Wireless V5 Bluetooth Earbuds, you should find the following items:

- Wireless Bluetooth Earbuds (Left and Right)
- Portable Charging/Storage Case
- USB-C Charging Cable
- Two (2) Pairs of Earbud Tips (Small, Large)
- User Manual



Image: A flat lay of all items included in the package: the charging case, two earbuds, a user manual, a USB-C charging cable, and three pairs of ear caps (small, medium, large).

SETUP

Charging the Earbuds and Case

Before first use, ensure both the earbuds and the charging case are fully charged. The charging case provides power to the earbuds and also serves as a protective storage unit.

1. Place the earbuds into their respective slots in the charging case.
2. Connect the USB-C charging cable to the charging port on the case and plug the other end into a USB power source.
3. LED indicators on the case and earbuds will illuminate to show charging status. A full charge typically takes about 1.5 hours for the case.

CONVENIENT CHARGING/STORAGE CASE

Bluetooth Version: V5.0
Bluetooth Distance: 10M
Earbuds Battery: 45mAh*2
Waterproof Level: IPX5

Charging Case Battery: 300mAh
Charging Time: About 1.5 hours
Music Playing Time: 3-4 hours
Calling Talk Time: 3-4 hours



Image: The Cellet charging case with earbuds inside, showing a blue lightning bolt graphic indicating the charging process. The case has a sleek, black design.

Pairing with Your Device

The earbuds use Bluetooth V5.0 technology for a stable and efficient connection.

1. **Power On:** Remove both earbuds from the charging case. They will automatically power on, indicated by a blue light.
2. **Automatic Sync:** Wait for the voice prompt "Pairing, Left Channel, Right Channel." This confirms the earbuds have synced with each other.
3. **Connect to Device:** Go to the Bluetooth settings on your smartphone, tablet, or other compatible device.
4. **Select Device:** Search for "Cellet_EB600" in the list of available Bluetooth devices and select it to connect.
5. **Confirmation:** Once connected, both earbuds will flash blue approximately every 8 seconds, indicating a successful connection.

COMPATIBLE TO

IPHONE 11, 11 PRO, 11 PRO MAX XS MAX, XS, XR, 8/8 PLUS,
SAMSUNG GALAXY NOTE 9, NOTE 8, GALAXY S10/S10 PLUS/ S10E, LG V30S THIN Q, LG V30,
GOOGLE PIXEL 2, PIXEL 2 XL, IPODS, IPADS, TABLETS AND OTHER WIRELESS ENABLED DEVICES



MP3



Smartphones



Tablets

Image: Two Cellet earbuds with blue wireless signal icons, positioned above illustrations of various compatible devices including MP3 players, smartphones (Apple, Android, Windows), and tablets.

OPERATING THE EARBUDS

The Cellet Wireless V5 Bluetooth Earbuds feature a multi-functional button on each earbud for easy control of music and calls.

Multi-functional Button Controls

LED POWER INDICATORS ON CHARGING CASE AND EARBUDS



Image: A diagram showing the Cellet charging case and earbuds. Labels point to the 'Right Ear Stopper Multi-Function Button' and 'Left Ear Stopper Multi-Function Button', highlighting their location and indicating LED power indicators.

- **Play/Pause Music:** Press the multi-functional button once on either earbud.
- **Answer/End Call:** Press the multi-functional button once on either earbud during an incoming call.
- **Reject Call:** Press and hold the multi-functional button for 2 seconds on either earbud during an incoming call.
- **Activate Voice Assistant:** (If supported by your device) Press the multi-functional button twice on either earbud.

Wearing the Earbuds

For optimal sound quality and comfort, ensure the earbuds are properly seated in your ears. Experiment with the included small and large earbud tips to find the best fit.



**ULTRA-SMALL AND LIGHTWEIGHT
EARBUDS WITH HIGH QUALITY SOUNDS**

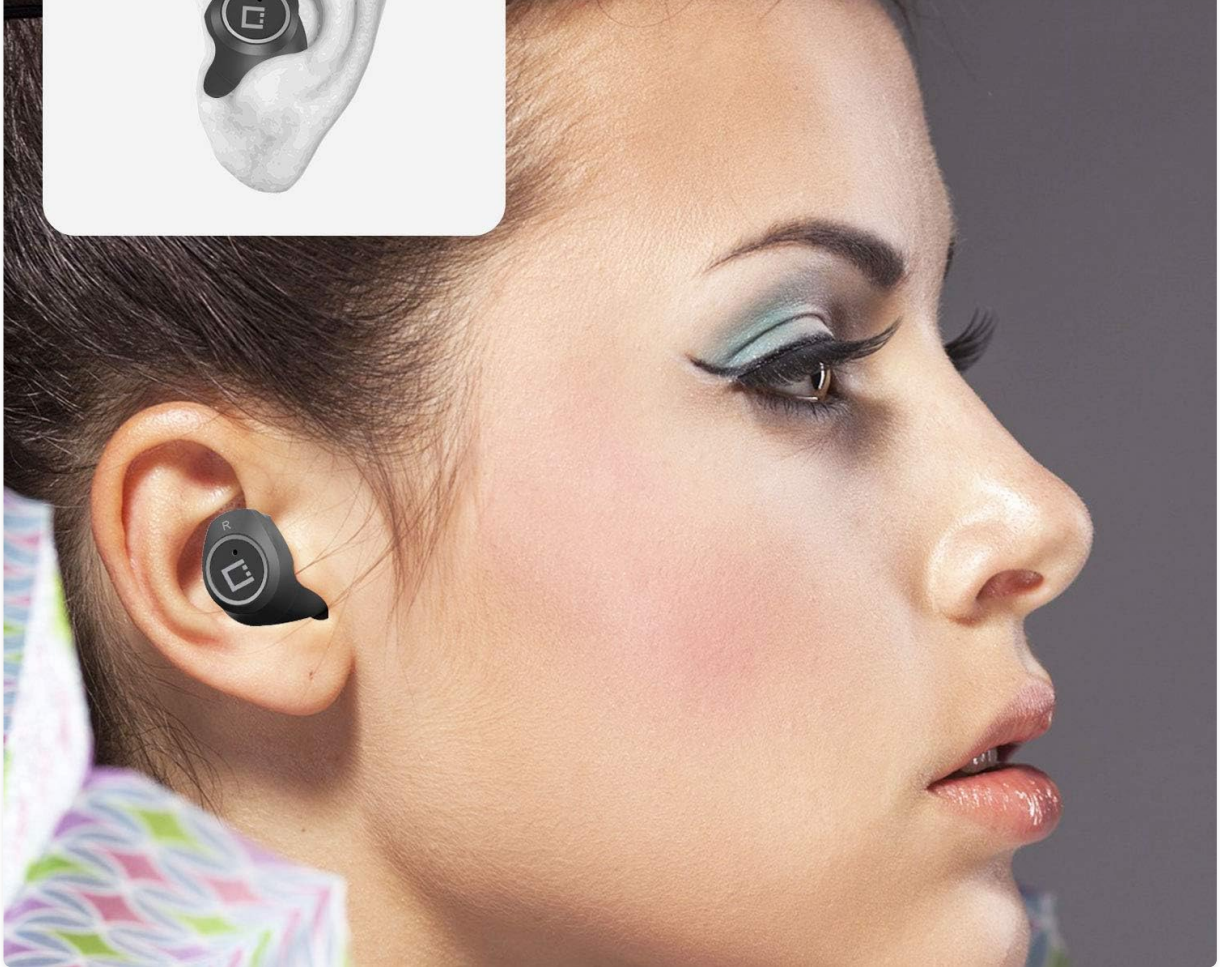


Image: A close-up illustration showing a Cellet earbud correctly placed within the ear canal, demonstrating a secure and comfortable fit.

Usage Scenarios



Image: A collage of three images showing individuals using the Cellet earbuds: one person smiling while looking at a phone, another cycling, and a third driving, highlighting the versatility of the earbuds for different activities.

MAINTENANCE

Proper maintenance ensures the longevity and optimal performance of your earbuds.

- **Cleaning:** Regularly clean the earbuds and charging case with a soft, dry, lint-free cloth. Do not use harsh chemicals or abrasive materials.
- **Earbud Tips:** Remove and clean the earbud tips periodically to prevent wax buildup, which can affect sound quality.
- **Storage:** When not in use, store the earbuds in their charging case to protect them from dust, damage, and to keep them charged.
- **Avoid Moisture:** While the earbuds may have some water resistance (IPX5), avoid prolonged exposure to water or high humidity. Do not submerge them.

TROUBLESHOOTING

If you encounter issues with your Cellet Wireless V5 Bluetooth Earbuds, refer to the following common

solutions:

| Problem | Solution |
|---------------------------------|---|
| Earbuds not powering on | Ensure earbuds are charged. Place them in the charging case and connect the case to power. |
| Earbuds not pairing with device | <div>1. Ensure Bluetooth is enabled on your device.</div> <div>2. Forget "Cellet_EB600" from your device's Bluetooth list and attempt to pair again.</div> <div>3. Ensure earbuds are removed from the charging case to enter pairing mode.</div> |
| Only one earbud has sound | <div>1. Place both earbuds back into the charging case, then remove them simultaneously to re-sync.</div> <div>2. Ensure both earbuds are charged.</div> |
| Poor sound quality | <div>1. Ensure earbuds are clean and free of debris.</div> <div>2. Try different sized earbud tips for a better seal.</div> <div>3. Move closer to your connected device to avoid interference.</div> |

SPECIFICATIONS

| Feature | Detail |
|-----------------------------------|---|
| Model Name | XG01 |
| Bluetooth Version | V5.0 (Product description states V5.0, feature bullets state V5.2. Using V5.0 as per title and main description.) |
| Wireless Communication Technology | Bluetooth |
| Connectivity Technology | Wireless |
| Frequency Response | 48000 KHz |
| Ear Placement | In Ear |
| Form Factor | In Ear |
| Noise Control | Active Noise Cancellation |
| Control Method | Touch (Multi-functional button) |
| Special Feature | Microphone Included |
| Material | Aluminum, Plastic, Stainless Steel |
| Item Weight | 4 Ounces |

| Feature | Detail |
|--------------------|------------------|
| Product Dimensions | 1 x 1 x 1 inches |
| UPC | 756449292260 |

WARRANTY AND SUPPORT

For warranty information or technical support, please refer to the documentation included with your purchase or contact the manufacturer directly. The manufacturer of this product is **Works for Meizu M5 Note by Cellet**.