

Emerald SM-AIR-1804-5.0

Emerald Air Fryer User Manual

Model: SM-AIR-1804-5.0 | Brand: Emerald

[Introduction](#) [Safety Instructions](#) [Product Overview](#) [Setup](#) [Operating Instructions](#) [Cleaning & Maintenance](#) [Troubleshooting](#) [Specifications](#)

1. INTRODUCTION

Thank you for choosing the Emerald Air Fryer. This appliance is designed to provide a healthier way to cook your favorite foods by frying, baking, grilling, and roasting with little to no oil. Its 5.2-liter capacity makes it suitable for family meals, and the digital LED touch display ensures easy operation. This manual provides essential information for safe and efficient use of your air fryer.

2. IMPORTANT SAFETY INSTRUCTIONS

When using electrical appliances, basic safety precautions should always be followed, including the following:

- Read all instructions before using the appliance.
- Do not touch hot surfaces. Use handles or knobs.
- To protect against electric shock, do not immerse cord, plugs, or the appliance in water or other liquid.
- Close supervision is necessary when any appliance is used by or near children.
- Unplug from outlet when not in use and before cleaning. Allow to cool before putting on or taking off parts.
- Do not operate any appliance with a damaged cord or plug, or after the appliance malfunctions or has been damaged in any manner.
- The use of accessory attachments not recommended by the appliance manufacturer may cause injuries.
- Do not use outdoors.
- Do not let cord hang over edge of table or counter, or touch hot surfaces.
- Do not place on or near a hot gas or electric burner, or in a heated oven.
- Extreme caution must be used when moving an appliance containing hot oil or other hot liquids.
- Always attach plug to appliance first, then plug cord into the wall outlet. To disconnect, turn any control to "off", then remove plug from wall outlet.
- Do not use appliance for other than intended use.
- Ensure adequate ventilation around the appliance during use.
- This appliance is for household use only.

3. PRODUCT OVERVIEW AND COMPONENTS

Familiarize yourself with the main parts of your Emerald Air Fryer:



Figure 3.1: Front view of the Emerald Air Fryer, showcasing the digital LED touch display and the handle for the cooking basket.



Figure 3.2: Angled view of the air fryer, highlighting its sleek black design and compact form factor suitable for countertops.



Figure 3.3: The removable non-stick basket and pan, designed for easy food placement and cleaning. The basket features perforations for optimal air circulation.



Figure 3.4: The air fryer with its basket pulled out, demonstrating the ample cooking space and how food is contained within the non-stick pan.

The Emerald Air Fryer features a main unit housing the heating element and fan, a removable non-stick cooking basket, and a slide-out pan. The intuitive digital LED touch display allows for precise control over cooking settings.

4. SETUP AND FIRST USE

1. **Unpacking:** Carefully remove all packaging materials from the air fryer.
2. **Cleaning:** Before first use, wash the removable basket and pan with hot water, dish soap, and a non-abrasive sponge. Rinse thoroughly and dry completely. Wipe the inside and outside of the appliance with a damp cloth.

3. **Placement:** Place the air fryer on a stable, level, heat-resistant surface, away from walls or other appliances to ensure proper air circulation.
4. **Power Connection:** Plug the power cord into a grounded wall outlet.
5. **Preheating (Optional but Recommended):** For best results, preheat the air fryer for 3-5 minutes at your desired cooking temperature before adding food. This helps achieve consistent cooking.

5. OPERATING INSTRUCTIONS

The Emerald Air Fryer features a user-friendly digital touch display for easy operation.



Figure 5.1: Close-up of the digital touchscreen display, showing temperature and time controls, along with various preset icons.



Figure 5.2: Illustrates the rapid hot air circulation technology used by the air fryer to cook food evenly and efficiently.

5.1. Basic Operation

1. **Power On:** Plug in the air fryer. The display will light up.

2. **Place Food:** Pull out the cooking basket by its handle. Place your food inside the non-stick pan. Do not overfill. Slide the basket back into the air fryer until it clicks into place.
3. **Set Temperature and Time:**
 - Use the **Temperature +/-** buttons to adjust the cooking temperature (range: 100°F - 400°F).
 - Use the **Time +/-** buttons to adjust the cooking time (up to 60 minutes).
4. **Start Cooking:** Press the **Start/Pause** button (often represented by a power icon or play/pause symbol on the display) to begin cooking. The fan and heating element will activate.
5. **Shaking Food:** For even cooking, especially with fries or smaller items, pull out the basket halfway through the cooking time and gently shake the food. Then, reinsert the basket. The air fryer will resume cooking automatically.
6. **End of Cooking:** The air fryer will beep when the cooking time is complete and automatically shut off. Carefully pull out the basket and remove the cooked food.

5.2. Using Preset Cooking Modes

The air fryer comes with 7 convenient preset cooking modes for common dishes. To use a preset:

1. After placing food in the basket, press the **Mode (M)** button to cycle through the available presets.
2. The display will show icons for each preset:
 - Fries
 - Chicken
 - Steak
 - Shrimp
 - Pork
 - Cake
 - Fish
3. Once you select the desired preset, the air fryer will automatically set the optimal temperature and time.
4. Press the **Start/Pause** button to begin cooking.
5. You can manually adjust the time and temperature even after selecting a preset if needed.

6. CLEANING AND MAINTENANCE

Regular cleaning ensures optimal performance and extends the life of your air fryer.



Figure 6.1: Illustration of the removable non-stick basket and pan, highlighting their ease of cleaning and dishwasher-safe properties.

6.1. Cleaning the Basket and Pan

- Always unplug the air fryer and allow it to cool completely before cleaning.
- The non-stick basket and pan are dishwasher safe. Alternatively, they can be washed by hand with hot water, dish soap, and a non-abrasive sponge.
- For stubborn food residue, soak the basket and pan in warm, soapy water for about 10 minutes before cleaning.
- Do not use metal utensils or abrasive cleaning materials, as this can damage the non-stick coating.
- Rinse thoroughly and dry completely before reassembling.

6.2. Cleaning the Main Unit

- Wipe the exterior of the air fryer with a damp cloth. Do not immerse the main unit in water or any other liquid.
- Clean the interior of the air fryer with a damp cloth and mild detergent if necessary. Ensure no water enters the electrical components.
- For the heating element, use a cleaning brush to remove any food residue.
- Ensure all parts are dry before plugging the appliance back in.

7. TROUBLESHOOTING

If you encounter issues with your Emerald Air Fryer, consult the following table for common problems and solutions.

Problem	Possible Cause	Solution
---------	----------------	----------

Problem	Possible Cause	Solution
Air fryer does not turn on.	<ul style="list-style-type: none">◦ Appliance not plugged in.◦ Power outlet not functioning.◦ Basket not inserted correctly.	<ul style="list-style-type: none">◦ Ensure the power cord is securely plugged into a grounded outlet.◦ Test the outlet with another appliance.◦ Push the basket firmly into the main unit until it clicks into place.
Food is not cooked evenly.	<ul style="list-style-type: none">◦ Basket is overcrowded.◦ Food not shaken during cooking.◦ Incorrect temperature or time setting.	<ul style="list-style-type: none">◦ Cook food in smaller batches.◦ Shake the basket halfway through cooking.◦ Refer to cooking guidelines for recommended temperature and time.
White smoke coming from the appliance.	<ul style="list-style-type: none">◦ Grease residue from previous use.◦ High fat content food.	<ul style="list-style-type: none">◦ Clean the basket and pan thoroughly after each use.◦ Drain excess oil from food before air frying.
"No start button" or controls unresponsive.	<ul style="list-style-type: none">◦ Unit may be in standby mode.◦ Basket not fully engaged.	<ul style="list-style-type: none">◦ Ensure the unit is fully powered on. Look for a distinct power/start icon on the touch display.◦ Push the basket in completely until it locks. The unit will not operate if the basket is not properly seated.

8. PRODUCT SPECIFICATIONS

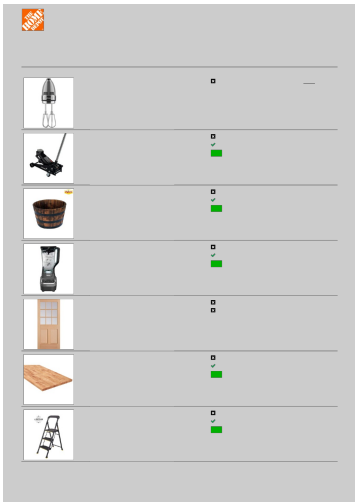
Feature	Detail
Brand	Emerald
Model Name	SM-AIR-1804-5.0
Capacity	5.2 Liters
Wattage	1800 Watts
Voltage	120 Volts
Control Method	Touch
Product Dimensions	15"D x 15"W x 15"H
Item Weight	13 Pounds
Material	Plastic (Non-stick Coated Inner)

Feature	Detail
Min Temperature Setting	100 Degrees Fahrenheit
Max Temperature Setting	400 Degrees Fahrenheit
Special Features	Temperature Control, Timer, Automatic Shut-Off, Programmable
Dishwasher Safe Parts	Basket and Pan (Removable)
Air Frying Technology	Hot Air Circulation
UPC	850000470545

9. WARRANTY AND CUSTOMER SUPPORT

For any questions, concerns, or warranty inquiries regarding your Emerald Air Fryer, please contact Emerald customer support. Refer to the product packaging or the official Emerald website for the most up-to-date contact information.

Please have your model number (SM-AIR-1804-5.0) and purchase information ready when contacting support.



[\[pdf\]](#)

Brandon AM s Registry Shared a List with You The Home Depot Ring Video Doorbell Smart Wireless WiFi Camera Built in Battery 2 Way Talk Night Vision Venetian Bronze SKU 1005955957 Model 8VRASZ 58b94a10 d425 11ed bad5 cfbedf96b6f8 homedepot customer list v1 sharelist |||

Brandon AM s Registry Shared a List with You Item Description Qty KitchenAid 7-Speed Contour ... 5.5 qt. Black Digital Air Fryer with Slide Out 1 Pan/Detachable Basket SKU # 1006452653 Model # **SM-AIR-1804-5.0** Internet # 317298929 Pfister Rosslyn Single Handle Pull Down Sprayer Kitchen 1 F...

lang:en score:13 filesize: 240.01 K page_count: 5 document date: 2025-08-06