

eufy T88513D1

eufy Eufycam 2 Pro Wireless Smart Security Camera System User Manual

Model: T88513D1

1. INTRODUCTION

This manual provides comprehensive instructions for the setup, operation, and maintenance of your eufy Eufycam 2 Pro Wireless Smart Security Camera System. Please read this manual thoroughly before using the product to ensure proper functionality and safety.

The eufy Eufycam 2 Pro system offers 2K resolution, two-way communication, and IP67 weather protection, designed for reliable home security monitoring.

2. PACKAGE CONTENTS

Verify that all items listed below are present in your package:

- eufy HomeBase (Main Unit)
- eufyCam 2 Pro Cameras (2 units)
- Mounting Kits (for 2 cameras)
- AC Power Adapter for HomeBase
- Ethernet Cable
- Micro-USB Charging Cable for Cameras
- Quick Start Guide



Figure 2.1: The eufy Eufycam 2 Pro system, including the HomeBase and two wireless cameras.

3. PRODUCT OVERVIEW

3.1. Key Features

- **2K Resolution:** Capture clear and detailed video footage.
- **Wireless & Wire-Free:** Easy installation without complex wiring.
- **365-Day Battery Life:** Extended operation on a single charge.
- **IP67 Weatherproof:** Designed to withstand various outdoor conditions.
- **Advanced Night Vision:** Enhanced visibility in low-light environments.
- **Two-Way Audio:** Communicate directly through the camera.
- **Local Storage:** 16GB eMMC storage on HomeBase, no monthly fees.
- **Smart Integration:** Compatible with Apple HomeKit.

2K Çözünürlük



Figure 3.1: Visual comparison demonstrating the clarity of 2K resolution provided by the eufyCam 2 Pro.

Geliřmiř Gece Grř



Figure 3.2: An illustration of the enhanced visibility offered by the eufyCam 2 Pro's advanced night vision capabilities.

Zorlu Hava Koşullarına Dayanıklıdır

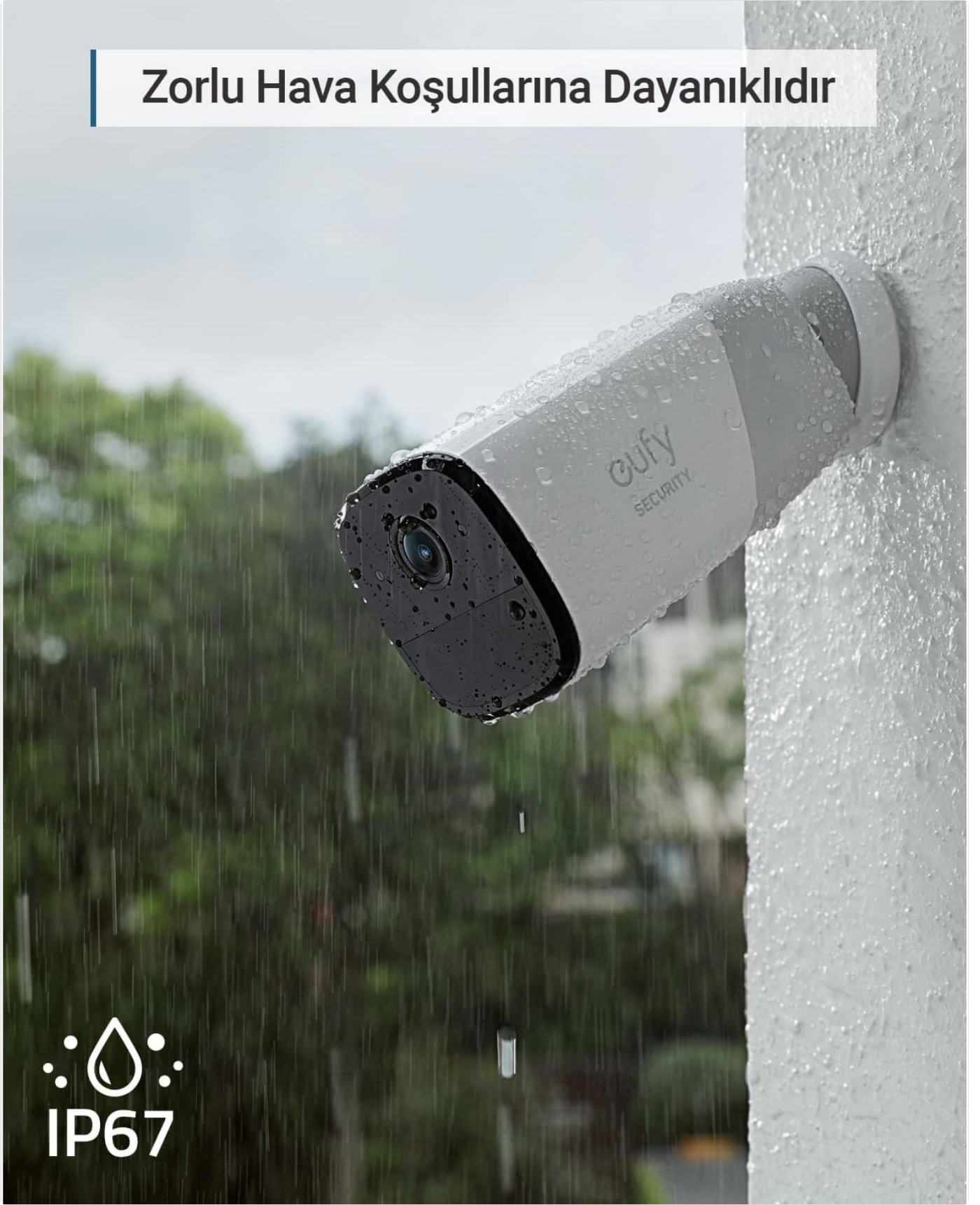


Figure 3.3: The eufyCam 2 Pro camera operating in rainy conditions, highlighting its IP67 weather resistance.

365 Günlük Pil Ömrü

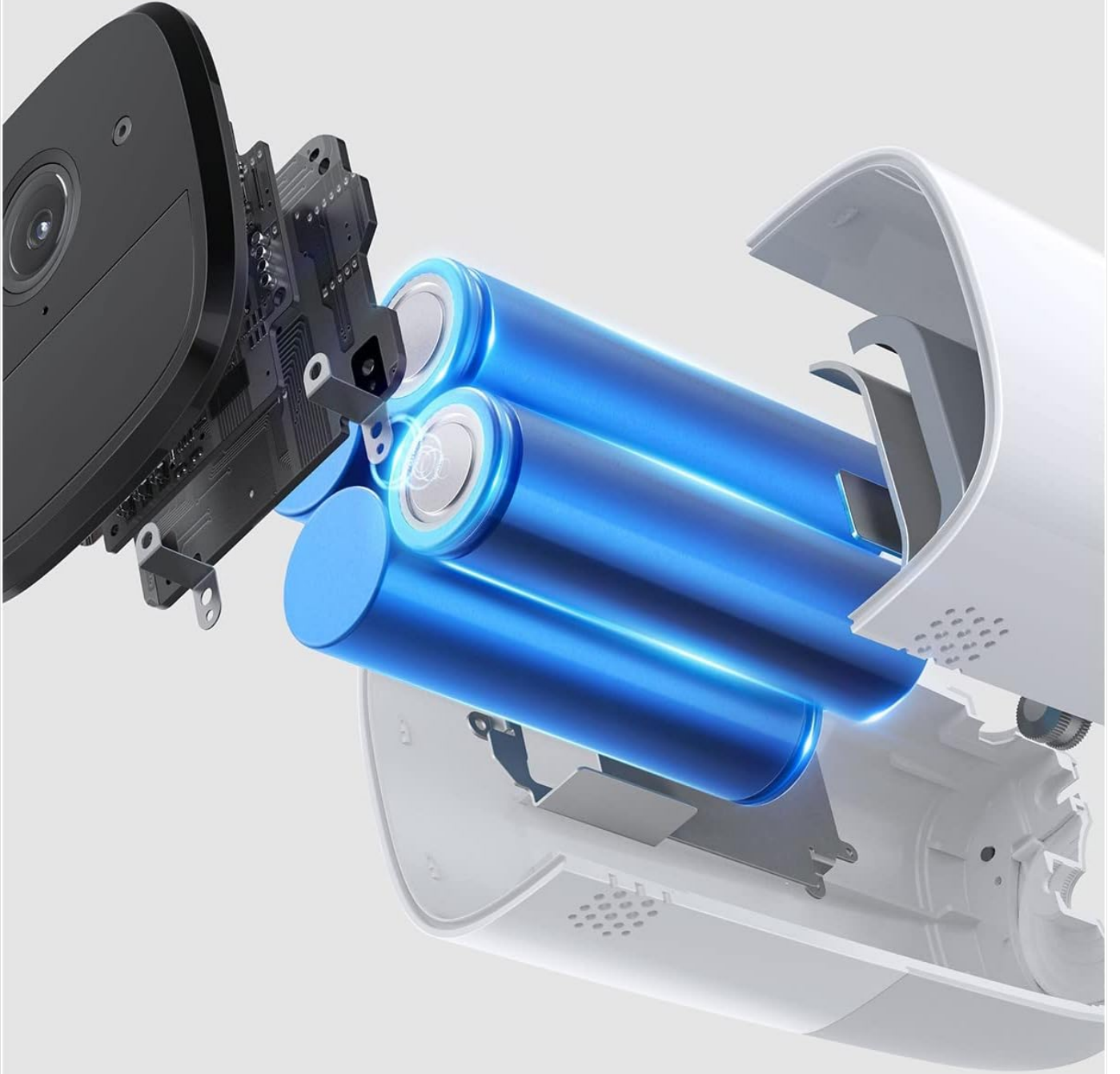


Figure 3.4: An internal diagram of the eufyCam 2 Pro, illustrating its long-lasting battery components.

Ek Masraf Yok



Figure 3.5: A cutaway view of the eufy HomeBase, indicating the integrated 16GB eMMC local storage.

4. SETUP GUIDE

4.1. Charging the Cameras

Before initial use, fully charge both eufyCam 2 Pro cameras using the provided Micro-USB charging cable and a standard USB power adapter (not included). The LED indicator on the camera will show charging status.

4.2. HomeBase Setup

1. Connect the HomeBase to your router using the supplied Ethernet cable.
2. Plug the AC power adapter into the HomeBase and a power outlet.
3. Wait for the HomeBase LED indicator to turn solid blue, indicating it is ready for pairing.

4.3. eufy Security App Installation

Download the eufy Security app from the App Store (iOS) or Google Play (Android). Create an account or log in if you already have one.

4.4. Pairing Cameras with HomeBase

1. Open the eufy Security app and tap "Add Device".
2. Select "eufyCam 2 Pro" from the list of devices.
3. Follow the on-screen instructions to pair each camera. This typically involves pressing the SYNC button on the camera until it beeps.

4.5. Camera Mounting

Choose a suitable location for your cameras, ensuring good Wi-Fi signal and an unobstructed view. Use the provided mounting kits to securely attach the cameras to a wall or ceiling. The cameras are designed for outdoor use with IP67 protection.

5. OPERATING INSTRUCTIONS

5.1. Using the eufy Security App

The eufy Security app is the primary interface for managing your camera system. From the app, you can:

- View live footage from your cameras.
- Access recorded events.
- Adjust motion detection sensitivity and zones.
- Enable/disable two-way audio.
- Configure notification settings.
- Check battery levels.

“Hey Siri, show me my front door”
(Hey Siri, bana ön kapımı göster)

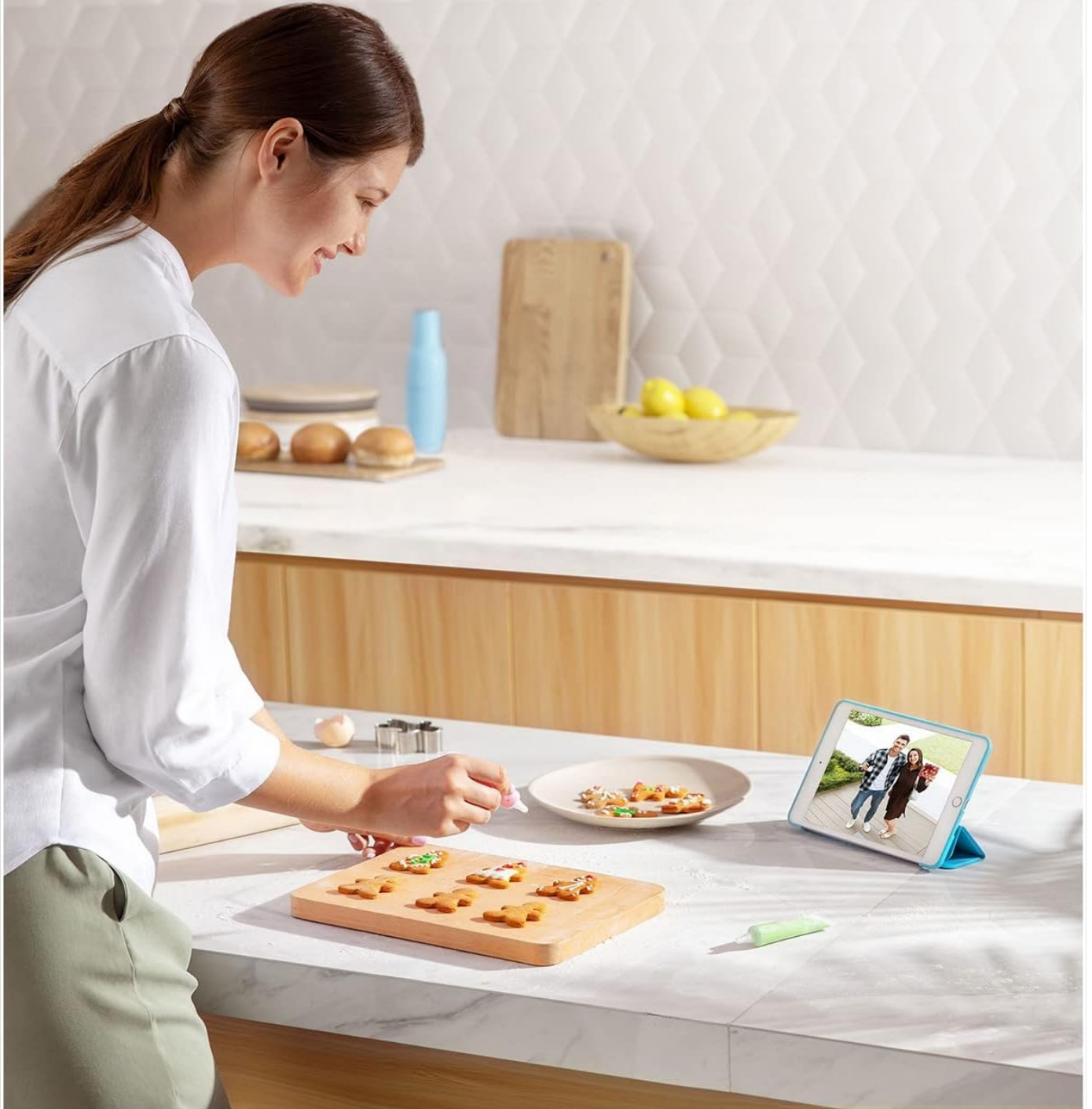


Figure 5.1: A user interacting with the eufy Security system, demonstrating live feed access and smart home integration.

5.2. Live View and Recording

Tap on a camera in the app to view its live feed. The system automatically records events triggered by motion detection. These recordings are stored locally on the HomeBase and can be reviewed through the app.

5.3. Two-Way Audio

Use the microphone icon in the live view to speak through the camera's speaker. This feature allows for direct

communication with individuals near the camera.

5.4. Motion Detection

Configure motion detection settings within the app to receive alerts and record footage when activity is detected. You can customize detection zones and sensitivity to minimize false alarms.

5.5. Night Vision

The eufyCam 2 Pro automatically switches to night vision mode in low-light conditions, providing clear black-and-white footage.

6. MAINTENANCE

6.1. Battery Management

The eufyCam 2 Pro cameras feature a long-lasting battery. Monitor battery levels through the eufy Security app. Recharge cameras when the battery level is low using the provided Micro-USB cable. Full charge typically takes several hours.

6.1. Cleaning

Periodically clean the camera lens and housing with a soft, damp cloth to ensure optimal image quality and prevent debris buildup. Do not use harsh chemicals or abrasive cleaners.

6.3. Firmware Updates

eufy regularly releases firmware updates to improve performance and add new features. Ensure your HomeBase and cameras are connected to the internet to receive automatic updates. You can check for updates manually in the eufy Security app settings.

7. TROUBLESHOOTING

- **Camera not connecting to HomeBase:** Ensure HomeBase is powered on and connected to the internet. Move camera closer to HomeBase during pairing. Reset camera by pressing the SYNC button for 10 seconds.
- **Poor video quality:** Check Wi-Fi signal strength in the camera's location. Clean the camera lens. Ensure there are no obstructions.
- **Motion detection not working:** Verify motion detection is enabled in the app. Adjust sensitivity settings. Ensure detection zones are correctly configured.
- **Short battery life:** Reduce the number of motion events or live view sessions. Ensure the camera is fully charged. Extreme temperatures can affect battery performance.
- **No notifications:** Check app notification settings and phone's system notification settings for the eufy Security app.

8. SPECIFICATIONS

Feature	Detail
Model Number	T88513D1
Video Resolution	2K (1440p)
Connectivity	Wi-Fi, Ethernet (HomeBase)

Power Source	Corded Electric (HomeBase), Battery (Cameras)
Battery Life	Up to 365 days (eufyCam 2 Pro)
Weather Resistance	IP67
Night Vision	Yes
Two-Way Audio	Yes
Local Storage	16GB eMMC (HomeBase)
Operating Temperature	-20°C to 50°C (-4°F to 122°F)
Dimensions (Camera)	Approx. 10.7 x 5.7 x 5.7 cm (4.2 x 2.2 x 2.2 inches)
Dimensions (HomeBase)	Approx. 13 x 8.5 x 8.5 cm (5.1 x 3.3 x 3.3 inches)
Weight (Camera)	Approx. 360g (0.79 lbs)
Weight (HomeBase)	Approx. 340g (0.75 lbs)

9. WARRANTY AND SUPPORT

9.1. Warranty Information

eufy products typically come with a limited warranty. Please refer to the warranty card included in your package or visit the official eufy website for the most current and detailed warranty information specific to your region and product model. Keep your purchase receipt as proof of purchase for warranty claims.

9.2. Customer Support


For technical assistance, troubleshooting, or general inquiries, please contact eufy customer support:




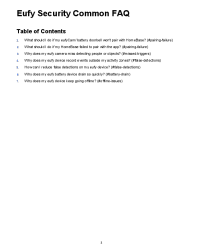

- **Website:** Visit www.eufylife.com for FAQs, support articles, and contact options.
- **Email:** Refer to your product packaging or the eufy website for regional email support addresses.
- **Phone:** Refer to your product packaging or the eufy website for regional phone support numbers.

When contacting support, please have your product model number (T88513D1) and purchase information ready.

© 2023 eufy. All rights reserved. eufy and Anker are trademarks or registered trademarks of Anker Innovations Limited.

Related Documents - T88513D1

	<p>eufy E330 eufyCam Professional Quick Start Guide</p> <p>This document provides a quick start guide for the eufy E330 eufyCam Professional security camera, covering setup, important safety instructions, and compliance information.</p>
---	--

	<p>E330 eufyCam (Professional) Quick Start Guide</p> <p>This guide provides instructions for setting up and mounting the E330 eufyCam (Professional) security camera system, including details on the S380 HomeBase, optional storage drive installation, system setup, mounting procedures, safety precautions, and regulatory compliance information.</p>
	<p>eufyCam 2/2C HomeKit Setup Guide</p> <p>Step-by-step instructions for setting up and integrating eufyCam 2 and 2C security cameras with Apple HomeKit, including FAQs on features and remote access.</p>
	<p>Eufy Security OutdoorCam : HomeBase 2 & eufyCam 2/2C</p> <p>Eufy Security OutdoorCam HomeBase 2 eufyCam 2/2C</p>
	<p>Eufy Security Common FAQ - Troubleshooting and Support</p> <p>A comprehensive guide to common issues and troubleshooting steps for Eufy Security cameras, doorbells, and HomeBase systems, covering pairing failures, detection problems, battery life, and connectivity.</p>
	<p>eufy E330 eufyCam (Professional) Quick Start Guide - Setup and Installation</p> <p>Get started with your eufy E330 eufyCam (Professional) security camera. This guide covers setup, mounting, app connection, and safety information for model T8600.</p>