

Epson ES-580W

Epson Workforce ES-580W Wireless Document Scanner User Manual

Model: ES-580W

1. INTRODUCTION

This manual provides detailed instructions for the setup, operation, and maintenance of your Epson Workforce ES-580W Wireless Color Duplex Desktop Document Scanner. This device is designed for efficient document and image scanning, offering high-speed performance and versatile connectivity options for both PC and Mac environments. The ES-580W features a 4.3-inch intuitive touchscreen, a 100-sheet Auto Document Feeder (ADF), and wireless capabilities, allowing scans to be sent directly to smartphones, tablets, computers, or cloud storage accounts. It supports scanning at up to 35 pages per minute and captures both sides of a document in a single pass.



Image 1.1: The Epson Workforce ES-580W Wireless Document Scanner in operation, showing documents being fed through the automatic document feeder and exiting into the output tray. The touchscreen display is visible, indicating various scanning options.

2. PACKAGE CONTENTS

Verify that all items listed below are included in your scanner package:

- Epson Workforce ES-580W Wireless Document Scanner
- SuperSpeed USB 3.0 cable
- AC adapter with power cable
- Start Here poster (Quick Setup Guide)



Image 2.1: An illustration of the items included in the Epson ES-580W scanner box. This includes the main scanner unit, a SuperSpeed USB 3.0 cable, an AC adapter with its power cable, and a 'Start Here' poster for initial setup guidance.

3. SETUP INSTRUCTIONS

3.1 Unpacking and Placement

1. Carefully remove the scanner and all accessories from the packaging.
2. Remove all protective tapes and packing materials from the scanner.
3. Place the scanner on a stable, flat surface with adequate space for document feeding and output.



Image 3.1: The Epson ES-580W scanner displayed with its approximate dimensions: 6.9 inches height, 6.6 inches depth, and 11.6 inches width. A coffee mug is placed next to it for scale.

3.2 Power Connection

1. Connect the AC adapter to the power input port on the back of the scanner.
2. Plug the power cable into a standard electrical outlet.
3. Press the power button on the scanner to turn it on.

3.3 Software Installation

For full functionality, install the Epson ScanSmart Software on your Windows PC or Mac. This software enables advanced scanning features, including wireless scanning to your computer and cloud services.

1. Visit the official Epson support website for the ES-580W model.
2. Download the latest drivers and Epson ScanSmart Software.
3. Follow the on-screen instructions to complete the installation.

3.4 Wireless Setup

The ES-580W offers wireless connectivity for flexible placement and scanning.

1. On the scanner's 4.3-inch touchscreen, navigate to the wireless setup menu.
2. Select your Wi-Fi network from the list of available networks.
3. Enter your Wi-Fi password if prompted.
4. Confirm the connection. The scanner should now be connected to your wireless network.
5. For mobile device scanning, download the Epson Smart Panel App from your device's app store and follow the in-app instructions to connect to the scanner.

4. OPERATING INSTRUCTIONS

4.1 Loading Documents

1. Extend the input tray and output tray.
2. Adjust the paper guides to match the width of your documents.
3. Load up to 100 sheets of paper into the Auto Document Feeder (ADF), face-down and top-edge first. Ensure documents are straight and not creased.

At a glance



Documents



Touchscreen



Wireless



ADF



TWAIN

Additional features

- ✓ Large 4.3" touchscreen
- ✓ Direct wireless scanning*
- ✓ 100-page Auto Document Feeder
- ✓ Save directly to a USB thumb drive
- ✓ 2-sided scans up to 35 ppm/70 ipm*
- ✓ Epson® Smart Panel mobile app
- ✓ TWAIN driver included
- ✓ Create Searchable PDFs/editable files
- ✓ Scan to cloud storage accounts* or mobile device
- ✓ Intelligent color/image adjustment tools



***SCROLL DOWN TO “FROM THE MANUFACTURER” TO LEARN MORE.**

Image 4.1: The Epson ES-580W scanner with a stack of documents loaded into its automatic document feeder, ready for scanning. The output tray is extended below.

4.2 Performing a Scan

The ES-580W offers multiple ways to initiate a scan:

- **From the Touchscreen:** Use the 4.3-inch touchscreen to select scan destinations such as a connected computer, network folder, email, or cloud services (Dropbox, Evernote, Google Drive, OneDrive).
- **From Epson ScanSmart Software:** On your PC or Mac, open the Epson ScanSmart Software. Select your desired scan settings (e.g., color, grayscale, resolution, file type) and initiate the scan.
- **From Epson Smart Panel App:** On your smartphone or tablet, open the Epson Smart Panel App. Select the scanner and choose your scan settings and destination.



Image 4.2: A user's hand is shown interacting with the 4.3-inch touchscreen display of the Epson ES-580W scanner, selecting options for a scanning task.

4.3 Key Features

- **High-Speed Duplex Scanning:** Digitizes documents at up to 35 pages per minute, capturing both sides simultaneously with Single-Step Technology.
- **Direct Scanning:** Save scans directly to a USB thumb drive, email, or popular cloud services without needing a computer.
- **Searchable PDFs & Editable Files:** Create searchable PDFs using Optical Character Recognition (OCR) and convert scans to editable Microsoft Word or Excel files.
- **Advanced Paper Handling:** The 100-sheet ADF reliably handles various paper types and sizes, featuring Double-feed Detect and Slow Scan Mode for enhanced accuracy.

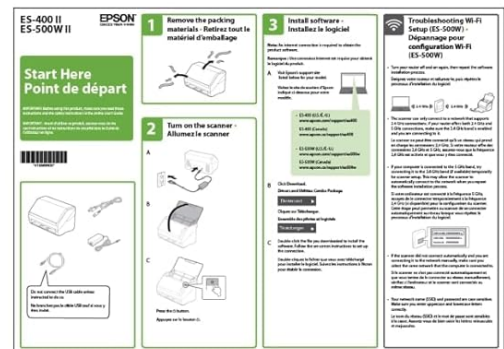
In the box



SuperSpeed
USB 3.0 cable



AC adapter
with power cable



Start Here poster

Image 4.3: A person is shown operating the Epson ES-580W scanner, which is placed on a desk next to a computer monitor. The user is pressing a button on the scanner's control panel, indicating an active scanning process.

5. MAINTENANCE

5.1 Cleaning the Scanner

Regular cleaning helps maintain optimal scanning performance and image quality.

1. Turn off the scanner and unplug the power cord.
2. Open the scanner cover to access the interior.
3. Gently wipe the glass scanning surface and rollers with a soft, lint-free cloth dampened with a mild, non-abrasive cleaner or water.
4. Ensure all components are dry before closing the cover and powering on the scanner.

5.2 Software Updates

Periodically check the Epson support website for updated drivers and software to ensure your scanner has the latest features and performance enhancements.

6. TROUBLESHOOTING

This section addresses common issues you might encounter with your Epson ES-580W scanner.

6.1 Scanner Not Responding

- Ensure the scanner is powered on and the power cable is securely connected.
- Check the USB cable connection if scanning via USB.
- For wireless scanning, verify the scanner is connected to your Wi-Fi network and your computer/mobile device is on the same network.
- Restart the scanner and your computer/mobile device.

6.2 Paper Jams

- Turn off the scanner and open the covers to access the paper path.
- Carefully remove any jammed paper, pulling in the direction of the paper path to avoid tearing.
- Ensure no small pieces of paper remain inside the scanner.
- Close all covers securely and restart the scanner.

6.3 Poor Scan Quality

- Clean the scanner's glass surface and rollers as described in the Maintenance section.
- Adjust scan settings (e.g., resolution, color mode) in the Epson ScanSmart Software or on the scanner's touchscreen.
- Ensure documents are loaded correctly and are not wrinkled or damaged.

7. SPECIFICATIONS

| Feature | Specification |
|-------------------------|---|
| Model Name | Epson WorkForce ES-580W |
| Scanner Type | Document |
| Connectivity Technology | Wi-Fi |
| Resolution | 300 dpi (Optical), up to 1200 dpi (Interpolated) |
| Color Depth | 30 bits |
| Scanning Speed | Up to 35 ppm / 70 ipm (300 dpi, Black-and-White, Grayscale or Color) |
| Standard Sheet Capacity | 100 sheets (Auto Document Feeder) |
| Product Dimensions | 14.5"D x 9.95"W x 11.25"H (approx. 11.6 x 11.6 x 6.6 inches when trays retracted) |
| Item Weight | 8.14 pounds (3.7 Kilograms) |

| Feature | Specification |
|-------------------|------------------------------------|
| Power Consumption | 580 watts (peak, during operation) |
| Manufacturer | Epson |

8. WARRANTY AND SUPPORT

8.1 Product Warranty

Your Epson Workforce ES-580W scanner is covered by a limited warranty provided by Epson. Please refer to the warranty documentation included with your product or visit the official Epson website for detailed terms and conditions regarding warranty coverage, duration, and service procedures.

8.2 Technical Support

For technical assistance, driver downloads, FAQs, and additional support resources, please visit the official Epson support website for the ES-580W model. You can also contact Epson customer service directly for personalized support.

- **Epson Support Website:** www.epson.com/support
- **Product Page:** [Amazon Product Page](#)