

CRAFTSMAN CMXEHAO80FAK

CRAFTSMAN 80,000 BTU Forced Air Kerosene/Diesel Portable Heater Instruction Manual

Model: CMXEHAO80FAK

1. SAFETY INFORMATION

Read and understand all instructions before operating this heater. Failure to follow these instructions may result in fire, explosion, electric shock, or serious injury.

- **Ventilation:** Always ensure adequate ventilation when operating the heater. This unit is designed for use in indoor/outdoor construction and commercial environments where proper ventilation is available.
- **Fuel:** Use only Kerosene, #1 and #2 Diesel Fuel, or JP-8 (Jet A Fuel). Do not use gasoline or other volatile fuels.
- **Placement:** Position the heater on a stable, level surface. Maintain clear distances from combustible materials as specified in the operating manual.
- **Operation:** Never leave the heater unattended while burning. Keep children and pets away from the heater.
- **Safety Features:** This heater is equipped with a high temperature safety shut-off switch and a photo cad cell flame sensor to ensure safe operation.

2. PRODUCT OVERVIEW

The CRAFTSMAN 80,000 BTU Forced Air Portable Heater is a robust heating solution designed for demanding environments such as garages, workshops, job sites, and farms. It features durable steel construction, a factory-installed thermostat, and the versatility to run on multiple fuel types including kerosene, diesel, and JP-8 without conversion. The unit is capable of heating up to 2,000 square feet.



Figure 1: CRAFTSMAN 80,000 BTU Forced Air Portable Heater, side view.

3. SETUP

3.1 Unpacking and Assembly

1. Carefully remove the heater from its packaging.
2. Inspect the unit for any damage. If damaged, do not operate and contact customer service.
3. Attach the handle using the provided screws. This is the only assembly required.



Figure 2: Close-up of the heater's handle for portability.

3.2 Fueling the Heater

1. Ensure the heater is turned OFF and unplugged before fueling.
2. Unscrew the fuel cap located on the top of the fuel tank.
3. Fill the tank with clean Kerosene, #1 or #2 Diesel Fuel, or JP-8 (Jet A Fuel). Do not overfill.
4. Monitor the fuel gauge to prevent overfilling.
5. Securely replace the fuel cap.



Figure 3: Fuel cap location for filling the tank.

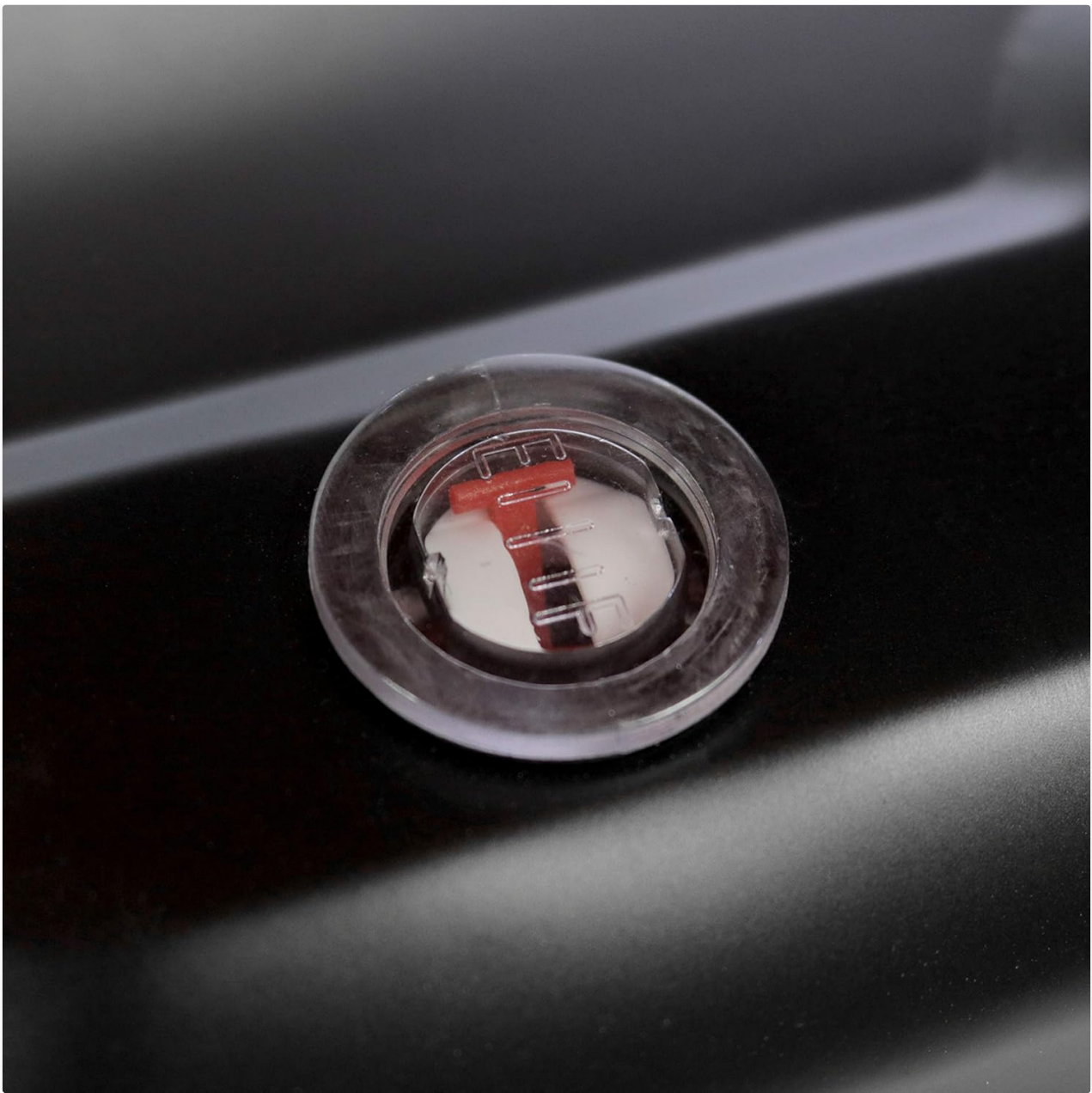


Figure 4: Fuel gauge indicating fuel level.

3.3 Placement and Power Connection

1. Place the heater on a firm, level surface.
2. Ensure adequate ventilation. This heater is suitable for indoor/outdoor construction and commercial environments with proper air circulation.
3. Keep the heater at a safe distance from walls, furniture, and any combustible materials.
4. Plug the heater into a properly grounded 110V/120V AC outlet.

4. OPERATING INSTRUCTIONS

4.1 Starting the Heater

1. Ensure the heater is fueled and properly connected to power.
2. Turn the power switch to the 'ON' position. The heater will begin its ignition sequence.

3. The photo cad cell flame sensor will detect the flame, and the heater will start producing heat.



Figure 5: Control panel showing the power switch and thermostat dial.

4.2 Adjusting Temperature

1. Use the thermostat control dial on the control panel to set the desired temperature.
2. The heater will automatically cycle on and off to maintain the set temperature.

4.3 Shutting Down

1. Turn the power switch to the 'OFF' position.
2. Allow the heater to cool down completely before unplugging or moving.

5. MAINTENANCE

Regular maintenance ensures optimal performance and longevity of your heater. Always ensure the heater is

OFF, unplugged, and cool before performing any maintenance.

- **Cleaning:** Keep the exterior of the heater clean. Use a soft, damp cloth. Do not use abrasive cleaners.
- **Fuel Filter:** Refer to the owner's manual for instructions on checking and cleaning the fuel filter.
- **Split Upper Shell:** The unit features a split upper shell design for easy access during maintenance.
- **Storage:** When storing the heater for extended periods, ensure the fuel tank is empty and the unit is clean and dry. Store in a cool, dry place.

6. TROUBLESHOOTING

If your heater is not operating correctly, consult the following common issues before contacting customer support:

Problem	Possible Cause	Solution
Heater does not start	No power, no fuel, or safety switch activated.	Check power connection, ensure fuel tank is not empty, reset safety switch if tripped.
Heater shuts off unexpectedly	Overheating, low fuel, or flame sensor issue.	Ensure proper ventilation, refill fuel, clean flame sensor.
Unusual odor or smoke	Improper fuel, poor ventilation, or dirty components.	Use correct fuel, increase ventilation, clean unit.

7. SPECIFICATIONS

Feature	Detail
Brand	CRAFTSMAN
Model Number	CMXEHAO80FAK
Heat Output	80,000 BTU
Heating Coverage	Up to 2,000 sq ft
Fuel Type	Kerosene, #1 & #2 Diesel Fuel, JP-8 (Jet A Fuel)
Special Feature	Portable, Thermostat Control, Safety Shut-off
Construction	Steel
Product Dimensions	29"D x 16"W x 17"H
Item Weight	34.1 pounds
UPC	089301003323



Figure 6: Product dimensions for the portable heater.

8. WARRANTY AND SUPPORT

For warranty information, technical support, or to order replacement parts, please refer to the official CRAFTSMAN product manual included with your heater or visit the CRAFTSMAN website. Keep your purchase receipt for warranty claims.