

[Manuals.plus](#) /

> [B.K.Licht](#) /

> B.K.Licht 3-Light GU10 Ceiling Spotlight Bar, Black, Model BKL1447 Instruction Manual

B.K.Licht BKL1447

B.K.Licht 3-Light GU10 Ceiling Spotlight Bar

Model: BKL1447 | Brand: B.K.Licht

INTRODUCTION

Thank you for choosing the B.K.Licht 3-Light GU10 Ceiling Spotlight Bar. This manual provides essential information for the safe installation, operation, and maintenance of your new lighting fixture. Please read these instructions carefully before installation and retain them for future reference.

PACKAGE CONTENTS

Please verify that all components are present before beginning installation:

- 1x B.K.Licht 3-Light GU10 Ceiling Spotlight Bar
- 1x Mounting Bracket
- 2x Screws
- 2x Wall Plugs
- 1x Instruction Manual

Note: GU10 bulbs are not included and must be purchased separately.

SAFETY INFORMATION

For your safety, always follow these precautions:

- **Electrical Safety:** Installation should only be performed by a qualified electrician or competent person. Always switch off the main power supply at the circuit breaker before installation, maintenance, or bulb replacement.
- **Voltage:** Ensure the voltage supply matches the fixture's requirements (230 Volts).
- **Bulb Type:** Use only GU10 LED bulbs with a maximum wattage of 5W. Exceeding this limit may cause damage or fire.
- **Indoor Use Only:** This fixture is designed for indoor use (IP20 rating). Do not expose to moisture or direct water.
- **Heat:** Allow bulbs to cool completely before touching or replacing them.

SETUP AND INSTALLATION

Follow these steps for proper installation:

1. **Turn Off Power:** Before starting, ensure the main power supply to the installation area is switched off at the circuit breaker.
2. **Prepare Mounting Surface:** Mark the drilling points for the mounting bracket on the ceiling. The mounting holes are spaced 90 mm apart. Drill holes and insert the provided wall plugs.
3. **Attach Mounting Bracket:** Secure the mounting bracket to the ceiling using the provided screws.
4. **Connect Wiring:** Carefully connect the household electrical wires to the terminal block on the fixture. Ensure correct polarity (Live, Neutral, Earth) according to local electrical codes.
5. **Mount Fixture:** Attach the spotlight bar to the mounting bracket, ensuring it is securely fastened.
6. **Insert Bulbs:** Insert GU10 LED bulbs (not included) into each of the three sockets. Twist to lock them into place.



This image illustrates the GU10 socket type and the adjustable nature of the spotlight heads, indicating they can be rotated and tilted for directional lighting.



A detailed view of one of the spotlight heads, highlighting its ability to be rotated and tilted, allowing users to direct light as needed.

After installation, restore power at the circuit breaker.

OPERATING INSTRUCTIONS

The B.K.Licht 3-Light GU10 Ceiling Spotlight Bar is designed for ease of use:

- **Power On/Off:** Control the light fixture using your standard wall switch.
- **Adjusting Spotlights:** Each of the three spotlights can be individually rotated and tilted to direct light to specific areas of your room. Gently adjust the spotlight heads to achieve your desired lighting angle.
- **Dimming Functionality:** This fixture is dimmable, provided you use dimmable GU10 LED bulbs and a compatible dimmer switch (not included).

MAINTENANCE

Regular maintenance ensures optimal performance and longevity of your fixture:

- **Cleaning:** Always switch off the power supply before cleaning. Wipe the fixture with a soft, dry cloth. Do not use abrasive cleaners or solvents, as they may damage the finish.
- **Bulb Replacement:** Ensure the power is off and bulbs have cooled before attempting to replace them. Gently twist the old GU10 bulb counter-clockwise to remove it, then insert the new GU10 LED bulb and twist clockwise to

secure.

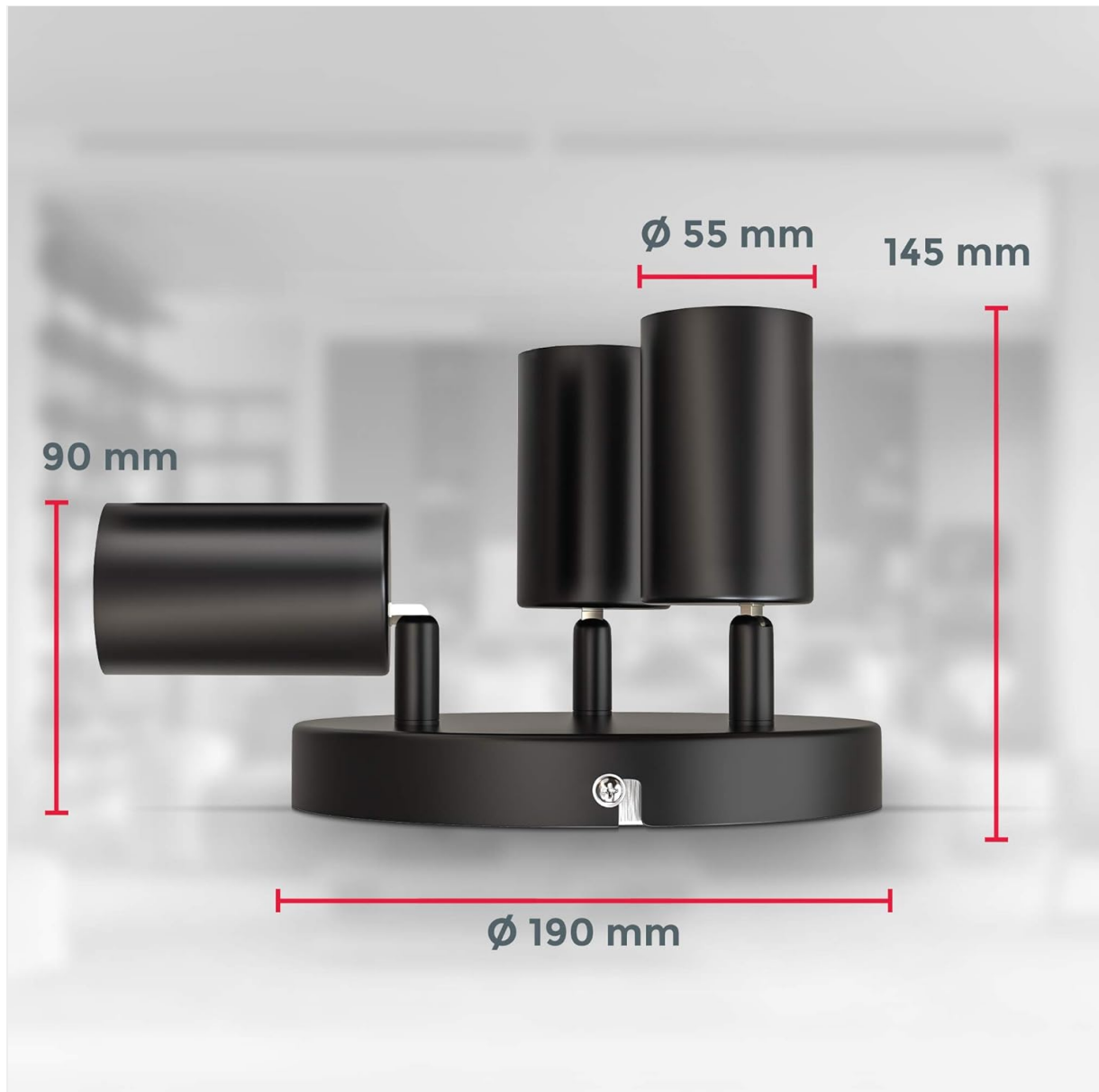
TROUBLESHOOTING

If you encounter issues, refer to the following common problems and solutions:

Problem	Possible Cause	Solution
Light does not turn on	No power supply; Faulty bulb; Loose wiring connection	Check circuit breaker; Replace bulb; Verify wiring connections (consult electrician if unsure)
Light flickers	Incompatible dimmer; Loose bulb; Faulty bulb	Ensure dimmer is compatible with LED bulbs; Tighten bulb; Replace bulb
Spotlight head is stiff to adjust	Normal operation; Dust accumulation	Apply gentle force; Clean around the joint with a dry cloth

SPECIFICATIONS

Detailed technical specifications for the B.K.Licht 3-Light GU10 Ceiling Spotlight Bar:



This diagram provides the key dimensions of the ceiling spotlight bar, including its diameter (190 mm) and height (90 mm).

Feature	Detail
Brand	B.K.Licht
Manufacturer	B.K.Licht
Product Dimensions (L x W x H)	19 x 19 x 9 cm
Item Weight	650 grams
Reference Number	BKL1447
IP Rating	IP20
Number of Items	1
Style	Modern
Color	Black
Shape	Triangular (base) / Projector (fixture)
Material	Metal
Finish Type	Lacquered
Number of Bulbs	3
Included Components	1 ceiling spotlight, User manual, Mounting kit
Maximum Wattage	5 Watts (per bulb)
Voltage	230 Volts
Specific Uses	Indoor use only
Special Features	Dimmable (with compatible bulbs/dimmer)
Shade Color	Black
Shade Material	Metal
Lighting Angle	LED (bulb dependent)
Power Source	Corded Electric
Switch Style	Pull Chain (Note: Product description implies wall switch control, this might be a generic spec. Confirm with actual product.)
Installation Type	Ceiling Mount / Flush Mount
Batteries Included	No
Batteries Required	No
Bulb Type	LED (GU10 socket)
Luminous Flux	1200 lumen (bulb dependent)

WARRANTY AND SUPPORT

B.K.Licht products are manufactured to high-quality standards. For specific warranty information, please refer to the terms and conditions provided at the point of purchase or contact B.K.Licht customer support directly. Keep your proof of

purchase for any warranty claims.

For further assistance or technical support, please visit the official B.K.Licht website or contact their customer service department.