

JouSecu N029-4C0T

JouSecu Wireless Security Camera System User Manual

Model: N029-4C0T | Brand: JouSecu

INTRODUCTION

This manual provides detailed instructions for the installation, operation, and maintenance of your JouSecu Wireless Security Camera System. Please read this manual thoroughly before using the product to ensure proper functionality and safety. Keep this manual for future reference.

PACKAGE CONTENTS

- 8CH NVR (Network Video Recorder)
- 4 x 1080P IP Wireless Security Cameras
- Power Adapters for NVR and Cameras
- USB Mouse
- Ethernet Cable
- Mounting Screws and Plugs
- Quick Start Guide



Image: Overview of the JouSecu Wireless Security Camera System, showing the NVR unit and four wireless cameras.

Key Features

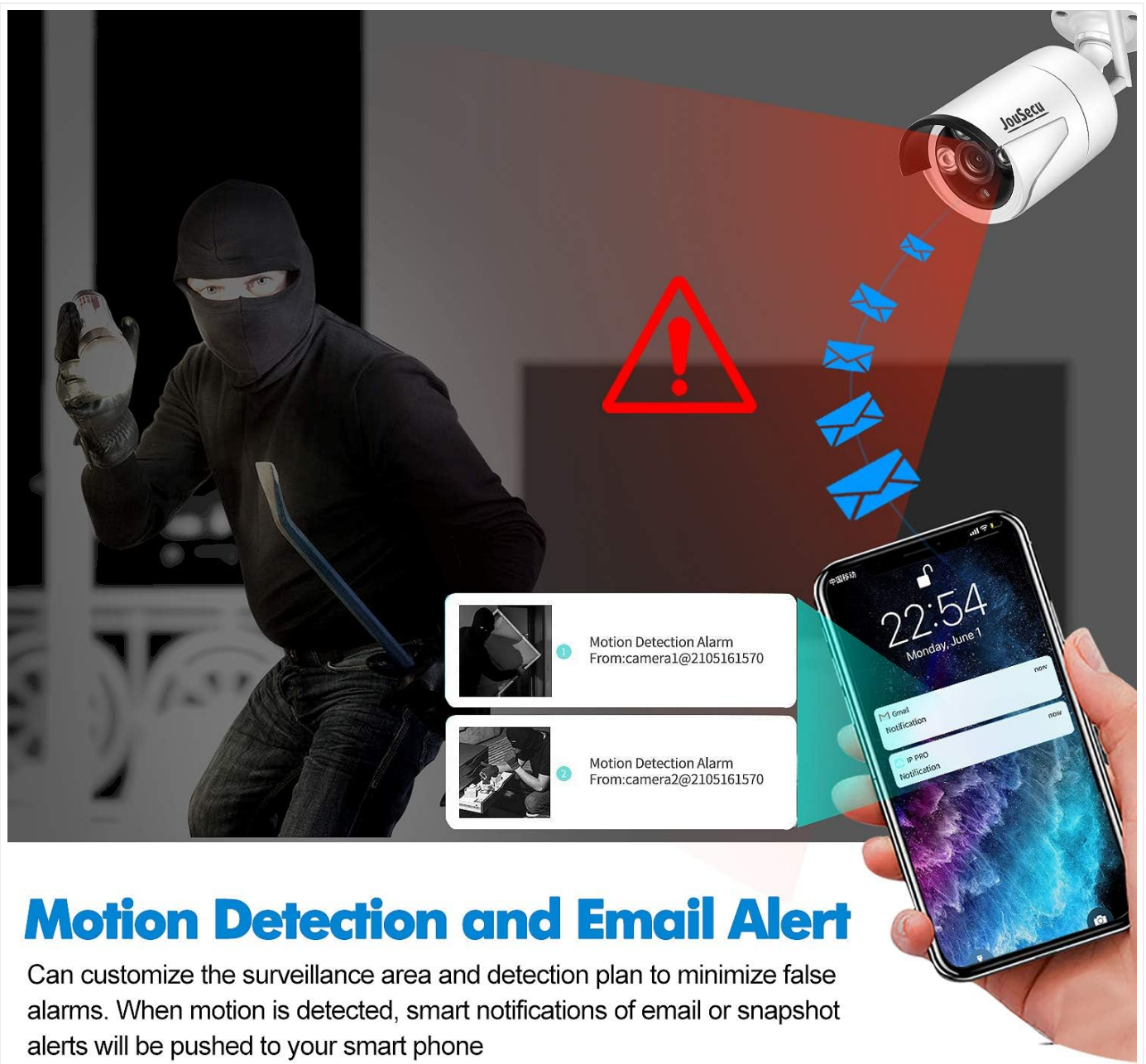
- **Plug and Play:** The WiFi IP cameras are pre-paired with the NVR system for easy setup. Requires wired power supply for cameras. Transmission distance up to 300 feet in open areas.
- **HD Video:** 1080P 8CH NVR and 1080P HD IP cameras provide clear images. Night vision range up to 65 feet. (NVR system does not include a screen).
- **IP66 Waterproof Rating:** Outdoor security cameras are IP66 rated, suitable for temperatures from -4°F to 122°F (-20°C to 50°C), ideal for various outdoor environments.
- **Easy Remote Access:** Monitor all security cameras remotely via the Esee Cloud App on your mobile phone or PC client. Features real-time video preview, recording, synchronized playback, and backup.
- **One-Way Audio:** IP cameras include a built-in microphone to record audio from the scene. Recorded sound can be played back on your phone or via headphones/speakers connected to the NVR.



Image: Illustrates the simple plug-and-play setup, showing the NVR and camera connected to power outlets.



Image: Demonstrates the camera's day and night vision capabilities and its IP66 waterproof rating, suitable for various weather conditions.



Motion Detection and Email Alert

Can customize the surveillance area and detection plan to minimize false alarms. When motion is detected, smart notifications of email or snapshot alerts will be pushed to your smart phone

Image: Shows the motion detection feature, where the system sends email or snapshot alerts to your smartphone upon detecting movement.

One way audio

IP Camera built in microphone, with one-way audio function, NVR system can record the shooting scene the sound, Provide favorable evidence for the you

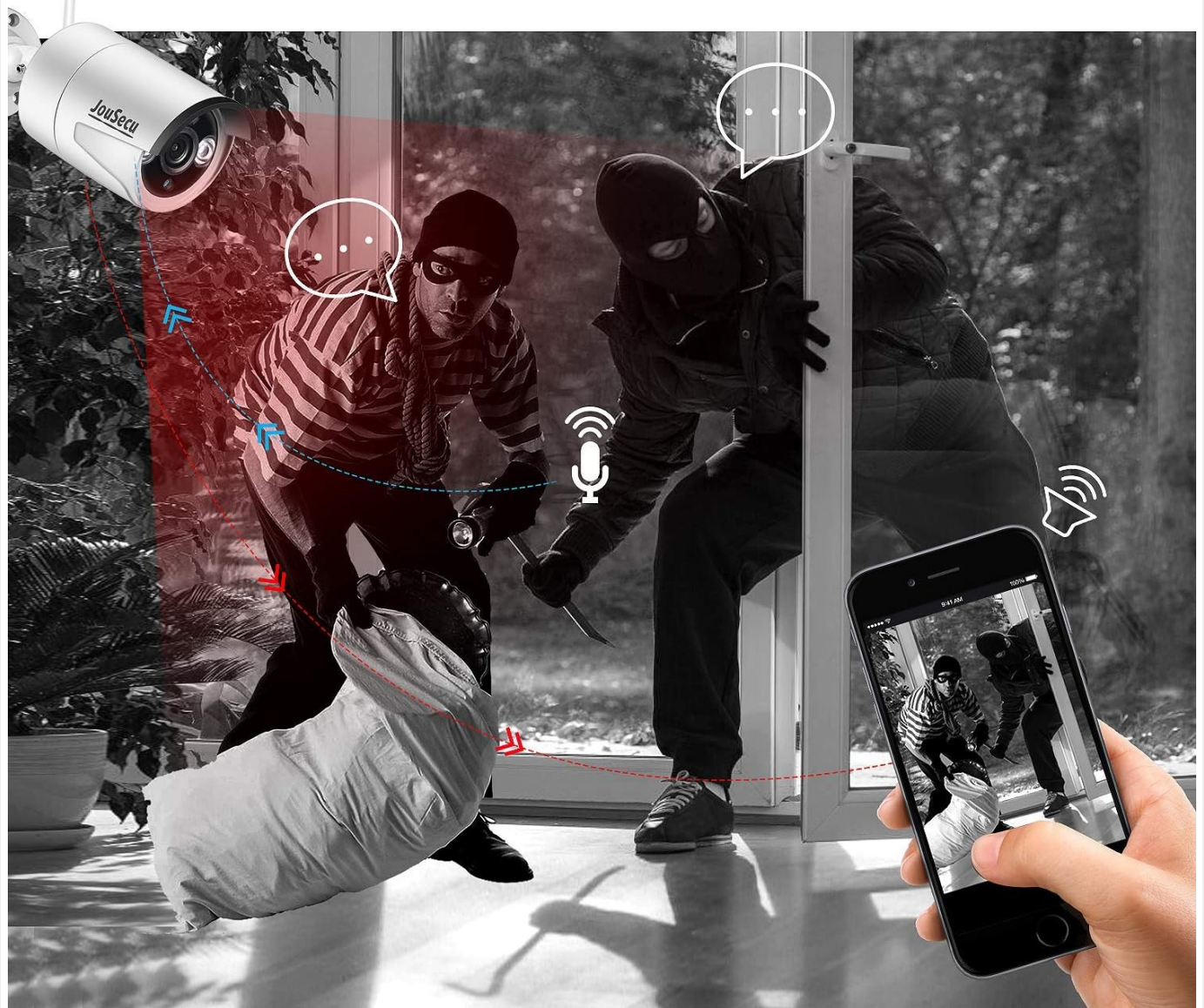


Image: Highlights the one-way audio capability, allowing the camera to record sound from the surveillance area.

SETUP GUIDE

Follow these steps to set up your JouSecu Wireless Security Camera System:

1. **Connect the NVR:** Connect the NVR to a monitor using an HDMI or VGA cable. Connect the NVR to power and turn it on.
2. **Power the Cameras:** Connect each camera to its respective power adapter and plug it into a power outlet.
3. **Initial Camera Pairing (if needed):** The cameras are pre-paired. If a camera is not showing video, you may need to re-match it.
4. **Network Connection:** Connect the NVR to your router using an Ethernet cable for remote access features.
5. **Install Esee Cloud App:** Download and install the Esee Cloud App on your smartphone or PC for remote viewing.

Adding a Camera (Matching Code)

If a camera loses connection or you are adding a new camera, follow these steps to re-match it with the NVR:

1. Supply power to the camera and connect it to the NVR temporarily using a network cable.
2. On the NVR interface, navigate to 'Video Manage' or 'Channel Setup'.
3. The system will search for available cameras. Wait until the camera is found.
4. Select the found camera from the list and click 'Match code' or 'Add'.
5. Once matching is successful, you can unplug the network cable. The camera will now connect wirelessly.

Video: Demonstrates the process of adding or re-matching a camera to the NVR system, including connecting via network cable, searching, matching, and then establishing a wireless connection.

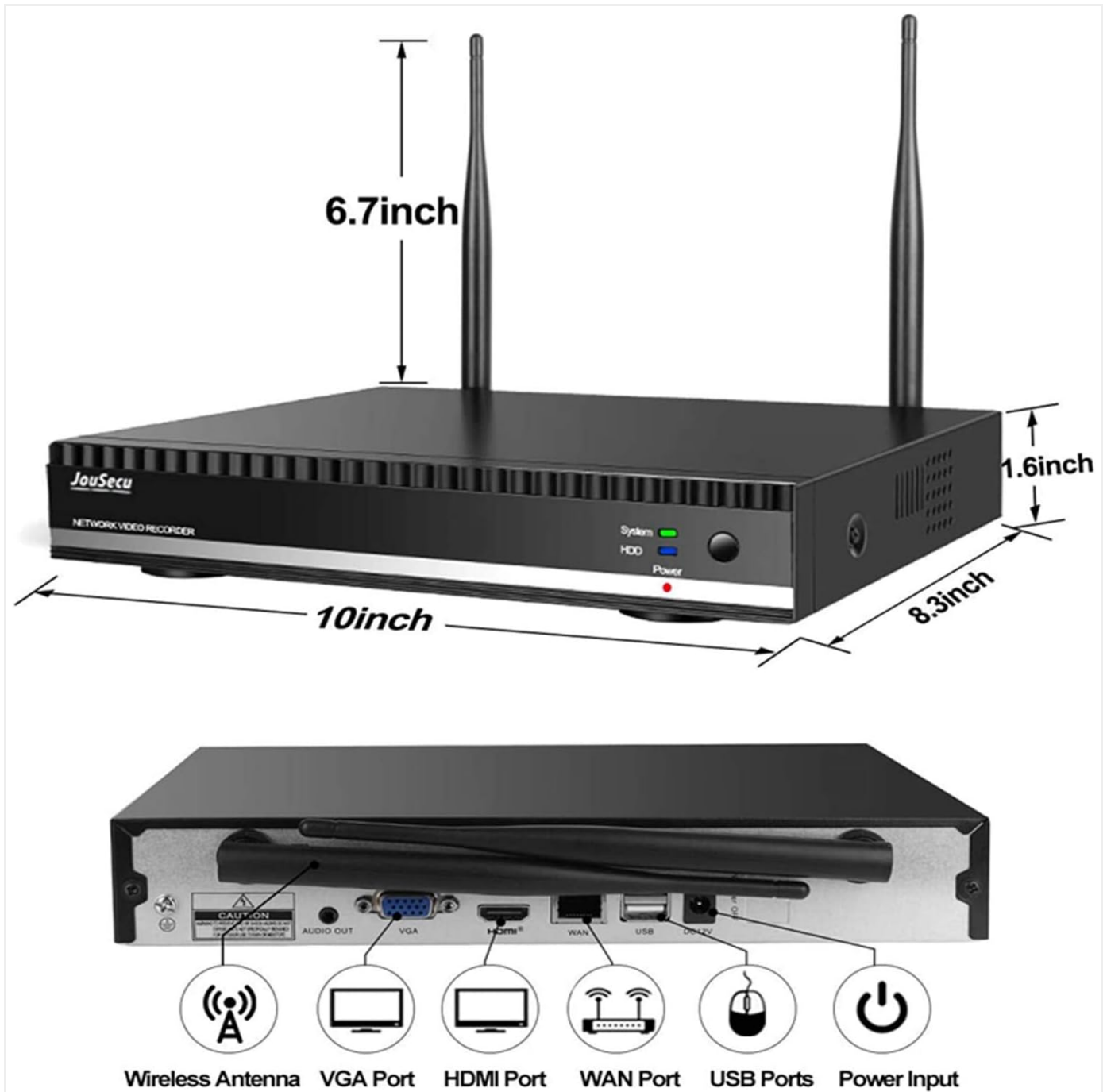


Image: Provides a detailed view of the NVR's dimensions and available ports, including Wireless Antenna, VGA, HDMI, WAN, USB, and Power Input.



Image: Diagram illustrating the key components of the camera, such as the Wireless Antenna, IP66 Waterproof housing, IR LED Array, Full HD Lens, Auto Day/Night sensor, RJ45 Port, and DC Port.

OPERATING INSTRUCTIONS

Local Viewing

Once the NVR and cameras are powered on and connected, live video feeds will appear on the connected monitor. Use the included USB mouse to navigate the NVR's interface for various functions like live view, playback, and system settings.

Remote Viewing (Esee Cloud App)

1. Ensure your NVR is connected to the internet via an Ethernet cable.
2. Download the 'Esee Cloud' app from your mobile app store (iOS/Android) or the PC client from the official website.
3. Register an account and log in.
4. Add your NVR device by scanning the QR code on the NVR or manually entering its ID.
5. You can now view live feeds, play back recordings, and receive motion detection alerts from anywhere with an

internet connection.

Recording and Playback

- The system supports continuous recording and motion-triggered recording. Configure recording schedules in the NVR settings.
- To play back recordings, access the 'Playback' function on the NVR or through the Esee Cloud App. Select the desired date and time to review footage.

MAINTENANCE

- **Cleaning:** Regularly wipe the camera lenses and NVR unit with a soft, dry cloth to remove dust and smudges. Do not use harsh chemicals or abrasive cleaners.
- **Firmware Updates:** Check the manufacturer's website periodically for firmware updates to ensure optimal performance and security.
- **Environmental Conditions:** Ensure the NVR is placed in a well-ventilated area, away from direct sunlight, heat sources, and moisture. While cameras are waterproof, avoid submerging them.
- **Cable Management:** Ensure all cables are securely connected and not exposed to potential damage.

TROUBLESHOOTING

Problem	Possible Cause	Solution
No video display on monitor	Loose cable connection; NVR/monitor not powered on; incorrect input source on monitor.	Check HDMI/VGA cables; ensure NVR and monitor are powered; select correct input on monitor.
Camera not connecting wirelessly	Camera out of range; interference; camera not paired.	Move camera closer to NVR; reduce interference (e.g., thick walls); re-match the camera (see Setup Guide).
No remote access via app	NVR not connected to internet; incorrect network settings; app login issue.	Ensure NVR is connected to router; check NVR network settings; verify app login credentials.
Poor image quality	Dirty lens; low light conditions; camera resolution settings.	Clean camera lens; ensure adequate lighting for optimal night vision; check camera resolution settings on NVR.

TECHNICAL SPECIFICATIONS

Feature	Specification
Brand	JouSecu
Model Number	N029-4C0T
Connectivity Technology	Wireless
Video Capture Resolution	1080p
Number of Channels	8

Feature	Specification
Waterproof Rating	IP66
Operating Temperature	-4°F to 122°F (-20°C to 50°C)
Night Vision Range	65 Feet
Frame Rate	30 FPS
Recording Mode	Motion detection, Continuous
NVR Dimensions (L x W x H)	10 x 8.3 x 1.6 inches (approx.)
Item Weight	8.18 pounds




WARRANTY AND SUPPORT

JouSecu products come with a standard manufacturer's warranty. For detailed warranty information, technical support, or service inquiries, please refer to the contact information provided in your product packaging or visit the official JouSecu website. Life-long after-sales support and services are provided to all customers.

Additional resources, including PDF user guides and manuals, may be available on the product's Amazon page or the manufacturer's support portal.



Related Documents

	<p>JouSecu N029 Wireless NVR Kit Quick User Guide</p> <p>Comprehensive guide to installing and setting up the JouSecu N029 Wireless NVR Kit, including network configuration, recording setup, video playback, and mobile app integration for enhanced security surveillance.</p>
	<p>Frequently Asked Questions: Remote Access for Surveillance DVR Kits</p> <p>Learn how to remotely access your JouSecu Surveillance DVR Kit via smartphone, PC, or website. This guide provides download links for the Eseecloud app and client software.</p>
	<p>JouSecu NVR Quick User Guide</p> <p>A quick user guide for the JouSecu NVR system, covering installation, setup, network configuration, recording, video playback, and mobile app usage. Includes instructions for wireless IP cameras and troubleshooting tips.</p>