

Suntek HC-801LTE (801Plus)

Suntek HC-801LTE 4G Trail Hunting Camera User Manual

Model: HC-801LTE (801Plus)

Brand: Suntek

1. INTRODUCTION

Thank you for choosing the Suntek HC-801LTE 4G Trail Hunting Camera. This high-quality 4G wildlife camera features a 36MP image resolution and 4K video preview, offering advanced monitoring capabilities. It is designed for tracking animal movements, searching for traces, and for security purposes, such as detecting intrusions. With its cloud service integration and mobile app control, you can receive instant notifications and manage your camera remotely. This manual provides detailed instructions to help you set up, operate, and maintain your camera for optimal performance.

2. PACKAGE CONTENTS

Please check the package contents to ensure all items are present:

- HC-801PRO Hunting Camera
- Antenna
- USB Cable
- Mounting Strap
- User Manual (on CD, English version included)



Image: The HC-801LTE camera shown with its standard accessories, including the 4G antenna, USB cable, and a black mounting strap.

Note: SIM card, SD card, and AA batteries are not included and must be purchased separately.

3. PRODUCT OVERVIEW

Familiarize yourself with the main components of your HC-801LTE camera:

- **Front Panel:** Main lens, PIR sensors, IR LEDs, TFT display.
- **Side Panel:** Latches for securing the camera housing.
- **Bottom Panel:** USB port, Micro SD card slot, external DC power port, SIM card slot, tripod mount.
- **Back Panel:** Battery compartment, mounting strap guides, product label.



Image: Front view of the HC-801LTE camera, highlighting the lens, PIR sensors, and the integrated display.



Image: Side view of the HC-801LTE camera, illustrating the robust latches that secure the device.



Image: Back view of the HC-801LTE camera, displaying the battery compartment and the product label with model and power specifications.

4. SETUP

Follow these steps to prepare your camera for use:

1. **Battery Installation:** Open the camera housing and insert 8 AA batteries into the battery compartment, ensuring correct polarity. The camera can also be powered permanently with a 9-12V, 1.5A network power supply.
2. **Micro SD Card Installation:** Insert a Micro SD card (up to 64GB, not included) into the designated slot. Ensure the card is formatted correctly for optimal performance.
3. **SIM Card Installation:** For 4G functionality, insert a compatible SIM card into the SIM card slot. Ensure the SIM card is activated and has an active data plan.
4. **Antenna Attachment:** Screw the provided 4G antenna firmly into the antenna port on top of the camera.

5. **Mounting:** Use the included mounting strap to secure the camera to a tree or pole. Alternatively, use the tripod mount for flexible positioning.

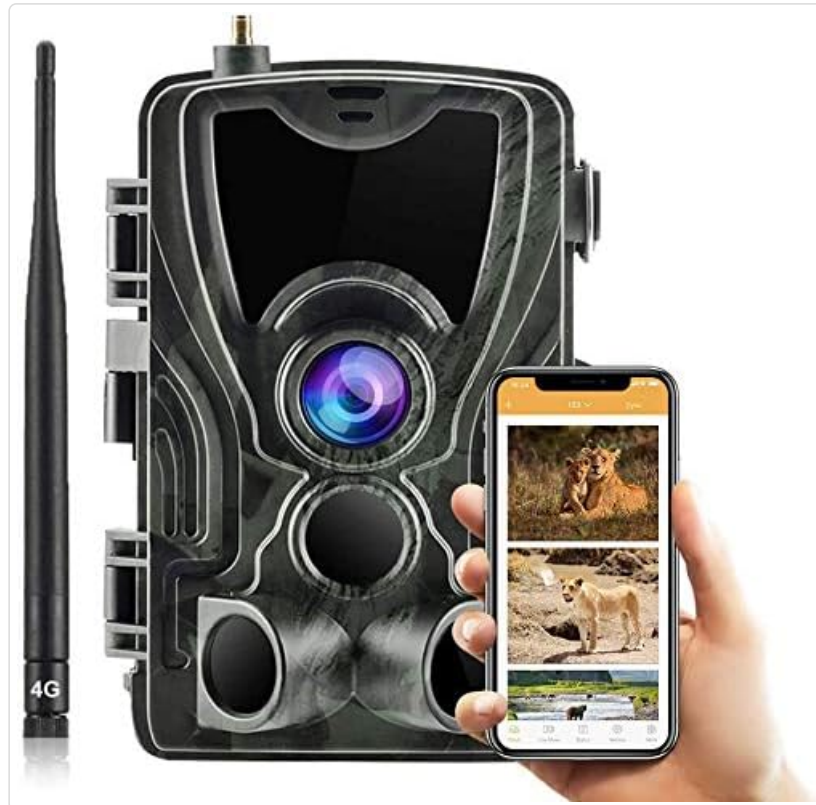


Image: The HC-801LTE camera with its 4G antenna, demonstrating its connectivity with a smartphone running the Suntekcam application.

5. OPERATING INSTRUCTIONS

This section details how to operate your Suntek HC-801LTE camera and utilize its features.

5.1 Powering On/Off

Locate the power switch inside the camera housing. Switch it to the 'ON' position to power on the camera. To power off, switch it to the 'OFF' position.

5.2 Operating Modes

The camera supports various operating modes:

- **Photo Mode:** Captures still images.
- **Video Mode:** Records video clips.
- **Photo + Video Mode:** Captures a still image followed by a video clip upon detection.

5.3 Suntekcam App Usage

The Suntekcam app allows for remote control and monitoring of your camera:

1. **Download the App:** Scan the QR code provided in the camera's manual or visit <http://app.appurl.me/79814428341> to download the

Related Documents - HC-801LTE (801Plus)

 <p>TRAIL CAMERA HC-810A USER MANUAL 0.3: 120° Fast trigger time Detection angle Rugged waterproof</p>	<p>Suntek HC-810A Trail Camera User Manual</p> <p>User manual for the Suntek HC-810A trail camera, covering product introduction, parameters, functions, and troubleshooting.</p>
 <p>4G Trail Camera Model: HC-810Pro 4G LTE Cat.4 4K 25FPS H.265 30FPS 4K video 0.2s</p>	<p>Suntek HC-810Pro 4G Trail Camera User Manual and Specifications</p> <p>Comprehensive guide to the Suntek HC-810Pro 4G Trail Camera, covering specifications, installation, setup, app binding, troubleshooting, and operating instructions. Learn about photo and video recording capabilities, memory storage, power sources, and detection systems.</p>
 <p>4G Trail Camera HC-900Pro User Manual • Návodný manuál • Uživatelský manuál • Használati útmutató • Benutzerhandbuch</p>	<p>4G Trail Camera HC-900Pro User Manual</p> <p>User manual for the 4G Trail Camera HC-900Pro, detailing specifications, installation, and app binding. Includes instructions in English, Czech, Slovak, Hungarian, and German.</p>
 <p>4G Trail Camera Model: HC-810Pro 4G LTE Cat.4 4K 25FPS H.265 30FPS 4K video 0.2s</p>	<p>Suntek HC-810Pro 4G Trail Camera User Manual and Specifications</p> <p>Comprehensive guide for the Suntek HC-810Pro 4G Trail Camera, covering installation, setup, app binding, troubleshooting, and technical specifications. Learn how to use its advanced features for wildlife monitoring.</p>
 <p>Wildlife Digital Infrared Trail Camera User's Manual HC-300</p>	<p>SUNTEK HC-300 Wildlife Digital Infrared Trail Camera User's Manual</p> <p>This user's manual provides detailed instructions for operating the SUNTEK HC-300 Wildlife Digital Infrared Trail Camera, covering setup, basic and advanced operations, settings, and technical specifications.</p>
 <p>HC-801A User Manual • Uživatelský manuál • Uživatelský manuál • Használati útmutató • Benutzerhandbuch</p>	<p>HC-801A Trail Camera User Manual</p> <p>User manual for the HC-801A trail camera, covering product introduction, structure, parameters, functions, troubleshooting, and warranty information.</p>

