

Jackery Explorer 1500

Jackery Portable Power Station Explorer 1500 User Manual

Model: Explorer 1500 | Brand: Jackery

1. INTRODUCTION

The Jackery Explorer 1500 is a portable power station designed to provide reliable power for various applications, including outdoor activities, RV/van camping, overlanding, and emergency home backup. It features a 1534Wh lithium battery capacity and delivers up to 1800W of continuous AC output. This manual provides essential information for the safe and efficient use of your Explorer 1500.

Key features include a robust Battery Management System (BMS) for safety and performance optimization, multiple output ports (AC, DC, USB-C, USB-A), and compatibility with solar charging for sustainable power generation.



Figure 1: Front view of the Jackery Explorer 1500 Portable Power Station, showing input/output ports and display.

2. SETUP

2.1 Unboxing and Initial Inspection

Upon receiving your Jackery Explorer 1500, carefully unpack all components and inspect for any signs of damage. The package typically includes the Explorer 1500 unit, a car charger, a wall charger, and a solar panel adapter.

2.2 Initial Charging

Before first use, it is recommended to fully charge the Explorer 1500. You can charge it using the included AC wall adapter, a 12V car adapter, or compatible solar panels.

2.3 Charging Methods and Times

- **AC Wall Charger:** Approximately 6 hours.
- **12V Car Charger:** Approximately 13 hours.
- **Solar Panels (e.g., 2x Jackery SolarSaga 100W):** Approximately 9.5 hours under optimal sunlight.
- **Solar Panels (e.g., 4x Jackery SolarSaga 100W):** Approximately 4-5 hours under optimal sunlight.

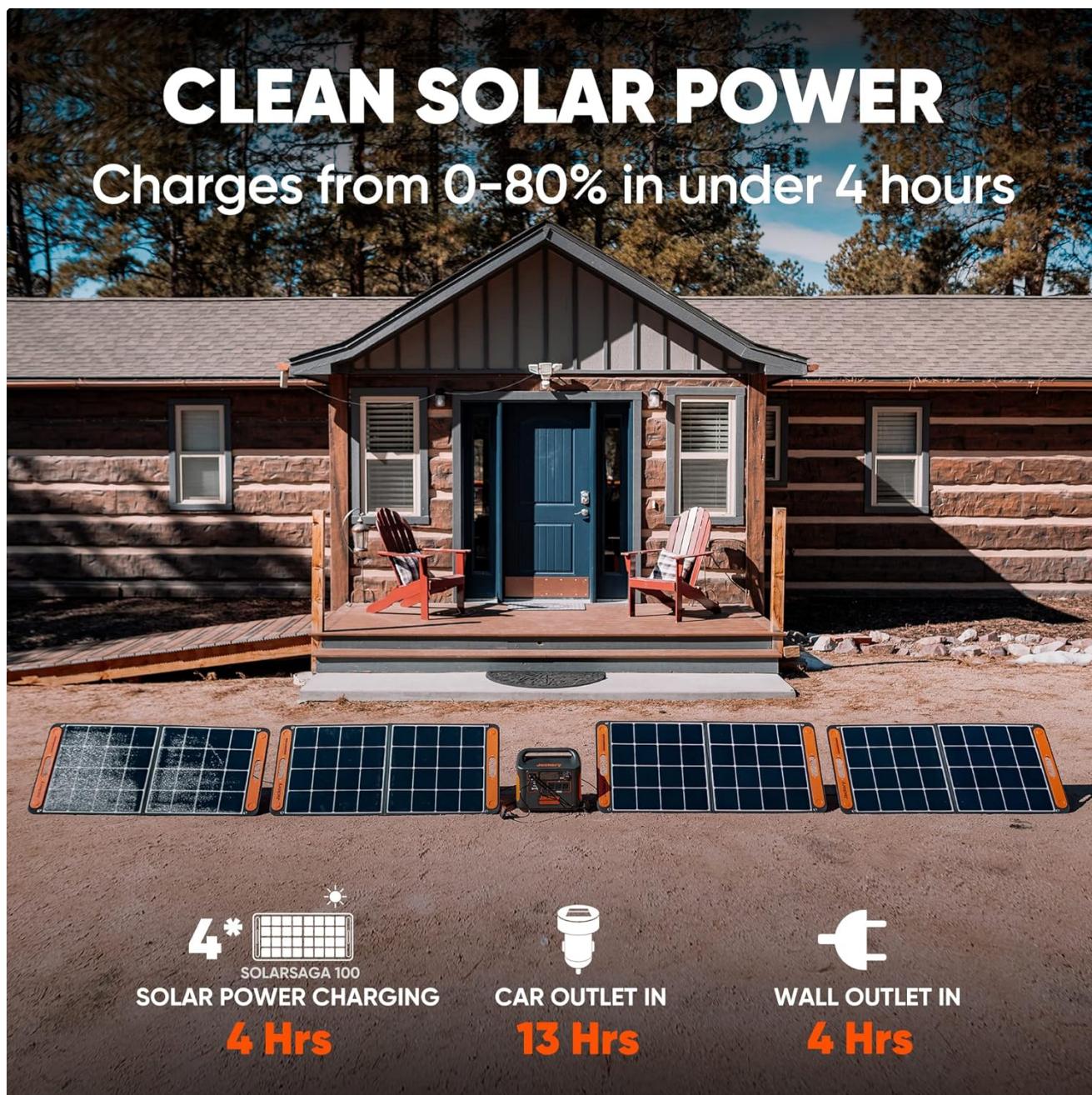


Figure 2: The Jackery Explorer 1500 being charged by multiple SolarSaga 100W panels, demonstrating solar charging capability.



Figure 3: SolarPeak Technology diagram illustrating the connection of four SolarSaga 100W panels to the Explorer 1500 for efficient charging.

Your browser does not support the video tag.

Video 1: Official Jackery video demonstrating the features and usage of the Jackery Portable Power Station 1500, including charging and powering devices.

3. OPERATING INSTRUCTIONS

3.1 Powering On/Off

To power on the Explorer 1500, press and hold the main power button. The display will illuminate, showing battery status and output information. To power off, press and hold the main power button again until the display turns off.

3.2 Understanding the Display

The LCD display provides real-time information:

- **Input Wattage:** Shows the power being drawn for charging.
- **Output Wattage:** Shows the power being consumed by connected devices.
- **Battery Level:** Indicates the remaining battery charge percentage.
- **Remaining Run/Charge Time:** Estimates how long the unit can power devices or how long until fully charged.



Figure 4: Detailed view of the Explorer 1500's digital display, providing real-time power and battery information.

3.3 Connecting Devices

The Explorer 1500 offers multiple output options:

- **AC Outlets (3x 110V/1800W Pure Sine Wave):** For standard household appliances. Press the AC button to activate.
- **DC Output (12V, 10A):** For 12V DC powered devices. Press the DC button to activate.
- **USB-C Output (5V, 2.4A):** For charging USB-C compatible devices.
- **USB-A Output (Quick Charge 3.0):** For fast charging compatible USB-A devices.

Ensure that the total wattage of connected devices does not exceed the Explorer 1500's maximum output capacity (1800W continuous, 3600W surge).

POWER MOST OF YOUR APPLIANCES

Charges up to 7 devices at a time

1534Wh

Capacity

1800 Watts

Output Power



75Min

ELECTRIC GRILL



130Min

TOASTER



90Min

PRESSURE COOKER

Figure 5: The Explorer 1500 in use, demonstrating its ability to power multiple appliances simultaneously, such as a coffee maker, electric grill, toaster, and pressure cooker.

EASE OF USE

Press & play in one touch



Figure 6: The Explorer 1500 being carried, highlighting its portable design and ease of use with a single power button.

4. MAINTENANCE

4.1 Battery Care and Storage

The Explorer 1500 uses a high-quality lithium-ion battery with a lifespan of 500+ charge cycles to 80% capacity. To maximize battery life:

- Recharge the unit every 3-6 months, even if not in use, to maintain optimal battery health.
- Store the unit in a cool, dry place, away from direct sunlight and extreme temperatures.
- Avoid fully discharging the battery frequently.

BATTERY MANAGEMENT SYSTEM

Improving battery life cycle



Figure 7: An internal view of the Explorer 1500, illustrating its advanced Battery Management System (BMS) designed to improve battery life and ensure safety.

4.2 Cleaning

Use a soft, dry cloth to clean the exterior of the power station. Do not use abrasive cleaners or immerse the unit in water.

5. TROUBLESHOOTING

5.1 Unit Not Charging

- Ensure the charging cable is securely connected to both the power station and the power source.
- Verify that the power source (wall outlet, car adapter, solar panel) is functioning correctly.
- If using solar panels, ensure they are in direct sunlight and properly oriented. Check connections and the solar panel adapter.

5.2 No Output from Ports

- Confirm the power station is turned on and the specific output port (AC, DC, USB) is activated.
- Check if the connected device is drawing more power than the port's or unit's maximum capacity.
- Ensure the connected device is functioning correctly.
- If an overload occurs, the unit may automatically shut down. Disconnect the device, restart the Explorer 1500, and try again with a lower-power device.

5.3 Display Not Working

- Ensure the unit has sufficient battery charge.
- Try restarting the power station.

6. SPECIFICATIONS

Feature	Specification
Model Name	Explorer 1500 (URMIIM)
Battery Capacity	1534Wh (41.34Ah / 36V) Lithium-ion
AC Output	3x 110V, 1800W (3600W Surge) Pure Sine Wave
DC Output	1x 12V, 10A
USB-C Output	1x 5V, 2.4A
USB-A Output	1x Quick Charge 3.0
Input (DC)	12V-30V (Max 500W)
Charging Time (AC Wall)	Approx. 6 hours
Charging Time (Car)	Approx. 13 hours
Charging Time (4x SolarSaga 100W)	Approx. 4-5 hours
Dimensions (L x W x H)	14"L x 10.4"W x 12.7"H
Item Weight	35.3 pounds
Operating Temperature	-10°C to 40°C (14°F to 104°F)
Certifications	UL Safety Standards



Figure 8: Dimensions of the Jackery Explorer 1500, illustrating its compact and portable design.

SAFE & RELIABLE

Meeting UL safety standards



Figure 9: An internal cutaway view of the Explorer 1500, emphasizing its safe and reliable construction, meeting UL safety standards.

7. WARRANTY AND SUPPORT


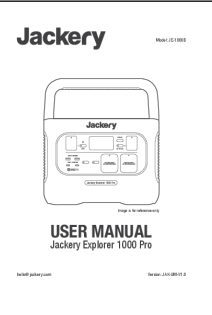
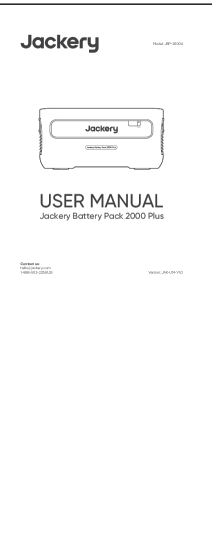



7.1 Warranty Information

The Jackery Explorer 1500 typically comes with a manufacturer's warranty. Please refer to the warranty card included with your product or visit the official Jackery website for detailed warranty terms and conditions. Protection plans may also be available for extended coverage.

7.2 Customer Support

For technical assistance, troubleshooting, or any product-related inquiries, please contact Jackery customer support through their official website or the contact information provided in your product packaging.

Related Documents - Explorer 1500

	<p>Jackery Explorer 1000EU User Manual: Portable Power Station Guide</p> <p>Comprehensive user manual for the Jackery Explorer 1000EU portable power station. Learn about features, specifications, charging, safety, and warranty.</p>
	<p>Jackery Explorer 1000 Pro User Manual</p> <p>User manual for the Jackery Explorer 1000 Pro portable power station, detailing its features, specifications, operation, charging methods, safety precautions, and warranty information.</p>
	<p>Jackery Battery Pack 2000 Plus User Manual: Features, Specs, and Safety</p> <p>Get detailed information on the Jackery Battery Pack 2000 Plus. This user manual covers technical specifications, usage with Explorer 2000 Plus, safety guidelines, and warranty from Jackery.</p>
	<p>Jackery Explorer 300 Plus Portable Power Station User Manual</p> <p>This comprehensive user manual guides you through the features and operation of the Jackery Explorer 300 Plus portable power station. Learn about its technical specifications, how to safely charge and use the device, and understand its various functions for reliable power on the go.</p>
	<p>Jackery Explorer 2000 Plus User Manual: Portable Power Station Guide</p> <p>Get detailed instructions and specifications for the Jackery Explorer 2000 Plus portable power station. This manual covers setup, operation, charging (AC, solar, car), safety, and troubleshooting for reliable off-grid power.</p>
	<p>Jackery Explorer 240 User Manual: Portable Power Station Guide</p> <p>Comprehensive user manual for the Jackery Explorer 240 portable power station. Learn about specifications, charging, usage, troubleshooting, and warranty.</p>