

Manuals+

[Q & A](#) | [Deep Search](#) | [Upload](#)

manuals.plus /

› [Piececool](#) /

› [Piececool Yamato Battleship 3D Metal Model Kit Instruction Manual](#)

Piececool HP101-SRY

Piececool Yamato Battleship 3D Metal Model Kit

Model: HP101-SRY | Brand: Piececool

INTRODUCTION

This manual provides detailed instructions for assembling your Piececool Yamato Battleship 3D Metal Model Kit. This kit is designed for enthusiasts aged 16 and up, offering a challenging yet rewarding building experience. The finished model is a highly detailed replica of the Yamato Battleship, suitable for display.

SAFETY INFORMATION

- **Small Parts:** This kit contains small parts which may pose a choking hazard. Keep out of reach of young children.
- **Sharp Edges:** Metal sheets may have sharp edges. Handle with care to avoid cuts.
- **Tools:** Use recommended tools carefully. Always cut away from your body.

PACKAGE CONTENTS

Your Piececool Yamato Battleship kit includes:

- Multiple metal sheets with pre-cut parts (245 pieces total).
- Detailed instruction manual with diagrams.

Note: Assembling tools are recommended but not included in the kit.

RECOMMENDED TOOLS

For optimal assembly, the following tools are highly recommended:

- **Clipper/Micro Nippers:** For cleanly detaching parts from the metal sheets.
- **Needle Nose Pliers:** Essential for bending and twisting connection tabs.
- **Tweezers:** For handling small parts and precise placement.
- **Magnifying Glass:** Useful for viewing intricate details and small connection points.
- **Small Screwdriver/Razor Knife:** Can be used to gently widen slots if tabs do not fit easily.



Image: Recommended tools for bending and twisting connection tabs.

ASSEMBLY INSTRUCTIONS

Follow the detailed diagrams provided in your kit's instruction manual. The assembly process involves detaching metal pieces, bending them into shape, and connecting them using tabs and slots. No glue or solder is required.

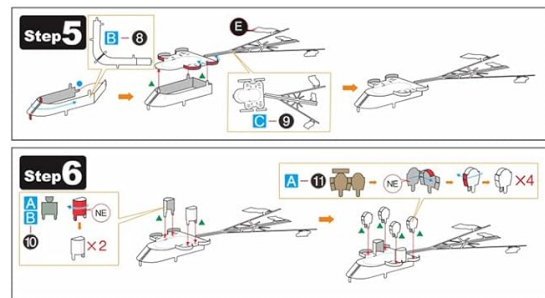
General Steps:

1. **Identify Parts:** Carefully identify each part on the metal sheets using the provided diagrams. It is helpful to mark off parts as they are used.
2. **Detach Parts:** Use clippers or micro nippers to carefully detach parts from the metal sheets. Avoid breaking parts off by hand to prevent damage.
3. **Bend and Shape:** Use needle nose pliers and other shaping tools to bend the flat metal pieces into the required 3D forms. Pay close attention to fold lines and angles.
4. **Connect Parts:** Insert tabs into corresponding slots. Twist or fold the tabs to secure the connection. If a tab does not fit easily, gently widen the slot with a razor knife or small screwdriver.
5. **Assemble Sub-sections:** The model is built by assembling smaller sub-sections (e.g., turrets, superstructure) and then combining them to form larger components.
6. **Final Assembly:** Connect all major components to complete the battleship model.

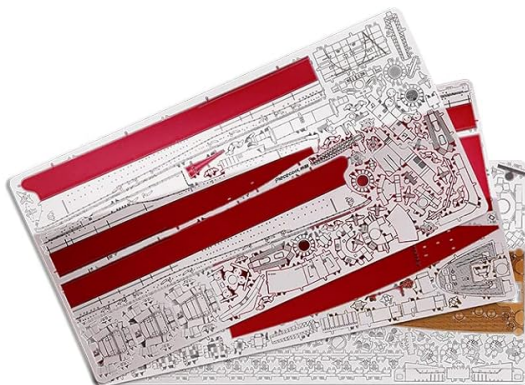
Exquisite Packing



Follow English Instruction Manual



Pop Out the Puzzle Piece



Build Your Own Craft Kit

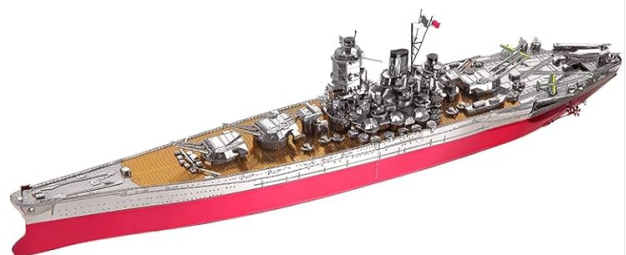


Image: Kit contents including metal sheets and illustrated instructions.

Image: Diagram showing tab insertion and twisting for assembly.

Assembly Video Guide:

For a visual guide on the assembly process, please refer to the official product video below:

Video: Official Piececool 3D Metal Model Kits - Yamato Battleship assembly overview.

CARE AND MAINTENANCE

- **Cleaning:** Dust the model gently with a soft brush or compressed air. Avoid using liquids or abrasive cleaners.
- **Handling:** Handle the finished model with care, as some delicate parts may bend or break if excessive force is applied.
- **Display:** Display the model in a stable location away from direct sunlight, high humidity, or extreme temperatures to preserve its appearance.

TROUBLESHOOTING

- **Tabs Not Fitting:** If a tab is difficult to insert, gently widen the corresponding slot using a small razor knife or the tip of a screwdriver. Ensure the tab is correctly aligned before attempting to insert it.
- **Bent Parts:** Small bends can often be carefully straightened with needle nose pliers or tweezers. For severely bent parts, proceed with caution as repeated bending can weaken the metal.
- **Lost Parts:** Due to the small size of many components, it is advisable to work in a well-lit area on a clean, uncluttered surface. If a part is lost, contact Piececool customer support for assistance.
- **Difficulty with Complex Sections:** Refer to the detailed diagrams in the instruction manual. Sometimes, reviewing the next few steps can clarify how a current section should fit. Patience is key for intricate models.

SPECIFICATIONS

Brand	Piececool
Model Number	HP101-SRY
Material	Metal (Stainless Steel)
Number of Pieces	245
Assembled Dimensions (L x W x H)	11.61 x 1.53 x 2.55 inches (29.5 x 3.9 x 6.5 cm)

Item Weight	0.22 Kilograms (7.8 ounces)
Recommended Age	16 years and up

ADDITIONAL TIPS

- **Patience is Key:** This is an intricate model. Take your time and enjoy the process. It may take several hours to complete.
- **Organize Parts:** Keep detached parts organized to avoid confusion, especially for similar-looking components.
- **Review Instructions:** Always read ahead a few steps to understand the overall assembly flow before making connections.



Image: Assembling the model can be a relaxing and engaging activity.

PRODUCT OVERVIEW



Image: The completed Piececool Yamato Battleship model.

Home Decoration

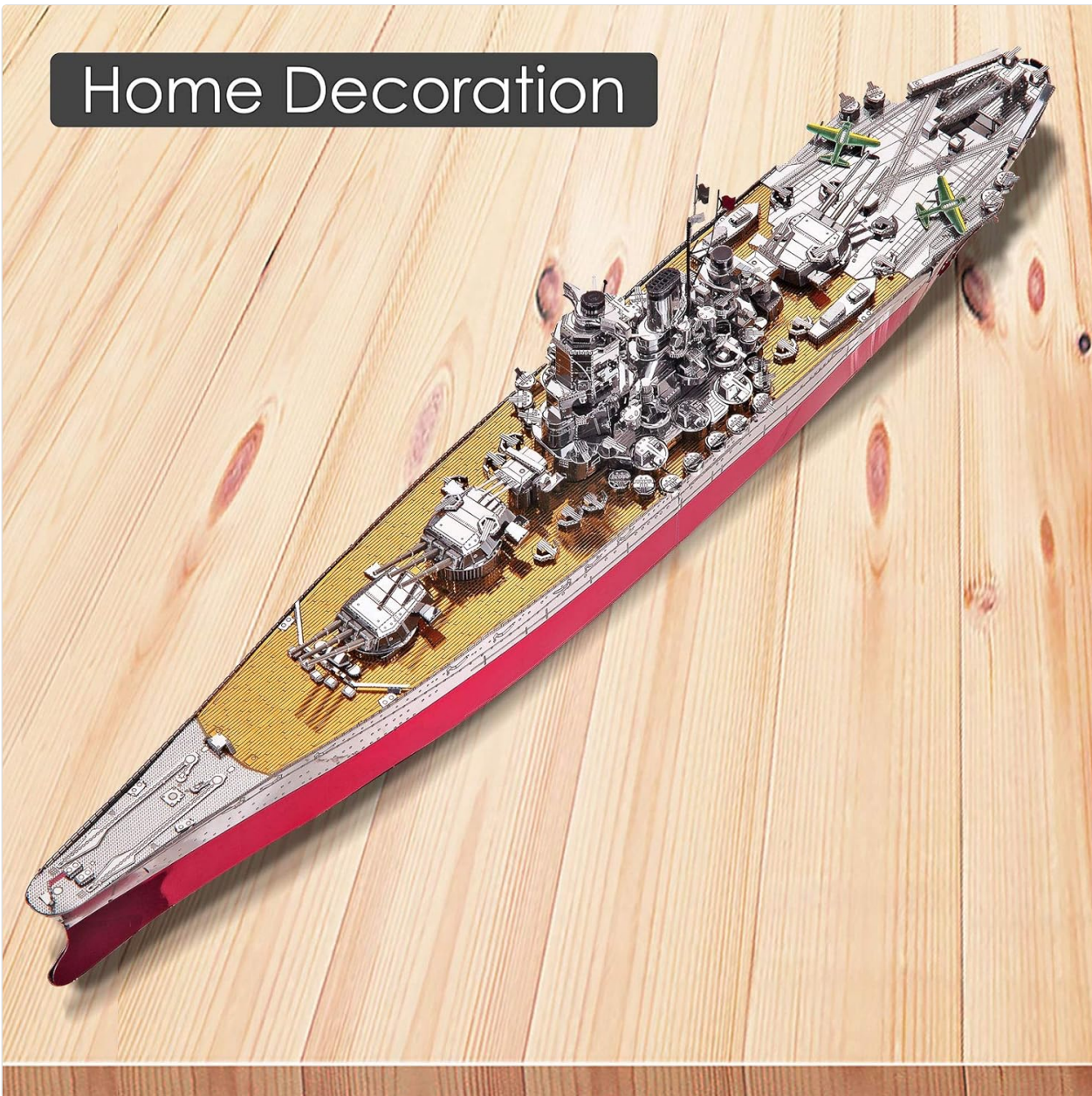


Image: Top view of the finished model, ready for display.