

Manuals+

[Q & A](#) | [Deep Search](#) | [Upload](#)

[manuals.plus](#) /

› [Yaheetech](#) /

› [Yaheetech Multi-Functional Drafting Table & Stool User Manual](#)

Yaheetech Multi-Functional Drafting Table B08NFY86ZG

Yaheetech Multi-Functional Drafting Table & Stool User Manual

Model: Multi-Functional Drafting Table B08NFY86ZG

INTRODUCTION

Thank you for choosing the Yaheetech Multi-Functional Drafting Table. This product is designed to provide a versatile and comfortable workspace for various activities, including drawing, crafting, reading, and general office tasks. Its adjustable tabletop and sturdy construction make it an ideal addition to any home or office environment. Please read this manual thoroughly before assembly and use to ensure proper setup and safe operation.



An overview of the Yaheetech drafting table, showcasing its adjustable tabletop feature with artwork.

SAFETY INFORMATION

- Read all instructions carefully before assembly and use.
- Keep all packaging materials away from children.
- Ensure all parts are present and undamaged before beginning assembly. Do not use if any parts are missing or broken.
- Assemble the product on a soft, clean surface to prevent scratches.
- Tighten all screws and bolts securely, but do not overtighten. Periodically check and retighten fasteners.
- Do not stand or sit on the table surface, except for the designated stool.
- Keep hands and fingers clear of moving parts, especially when adjusting the tabletop angle.
- Place the table on a level surface to ensure stability.
- Maximum weight capacity for the tabletop is approximately 50 lbs (22.7 kg). Do not exceed this limit.

PACKAGE CONTENTS

Please verify that all components listed below are included in your package:

- Drafting Table Frame Components
- Tabletop Panels (Fixed and Adjustable)
- Stool Components (Seat, Legs, Crossbars)
- Hardware Pack (Screws, Bolts, Washers, Allen Wrench)
- Movable Pencil Ledge
- Assembly Instructions Manual (This document)

SETUP AND ASSEMBLY

Assembly is required for this product. It is recommended to have two people for easier and safer assembly. Please refer to the detailed assembly instructions provided in the included PDF manual for step-by-step guidance. A general overview of the process is provided below.



A diagram illustrating the key measurements of the drafting table and stool, including length, width, height, and adjustable range.

General Assembly Steps:

1. **Unpack and Identify Parts:** Carefully remove all components from the packaging and lay them out. Compare them with the parts list in the detailed manual to ensure everything is present.
2. **Assemble the Table Frame:** Attach the crossbars and support beams to the main leg frames using the provided hardware. Ensure all connections are secure.
3. **Attach Tabletop Panels:** Secure the fixed and adjustable tabletop panels to the assembled frame. Pay attention to the hinge mechanism for the adjustable section.
4. **Assemble the Stool:** Connect the stool legs to the seat and secure the crossbars for stability.
5. **Install Accessories:** Attach the movable pencil ledge to the front edge of the adjustable tabletop.

6. **Final Check:** Once assembled, gently shake the table and stool to ensure stability. Tighten any loose fasteners.

For detailed visual instructions, please refer to the official [Installation Manual \(PDF\)](#).

OPERATING INSTRUCTIONS

Adjusting the Tabletop Angle:

The Yaheetech Drafting Table features an adjustable tabletop, allowing you to tilt the surface to your preferred angle for various tasks. To adjust:

1. **Lift the Tabletop:** Gently lift the front edge of the adjustable tabletop.
2. **Select Angle:** As you lift, you will notice a support mechanism with multiple notches. Select the desired angle by resting the tabletop support bar into one of these notches.
3. **Secure Position:** Ensure the support bar is firmly seated in the notch before applying pressure to the tabletop.

THE ANGLE OF THE DESKTOP IS ADJUSTABLE WITH A SIMPLE OPERATION



0°-10°for writing



10°-30°for reading



30°-40°for drawing

This image highlights the adjustable tabletop feature, indicating optimal angles for different activities: 0-10 degrees for writing, 10-30 degrees for reading, and 30-40 degrees for drawing.

MULTI-FUNCTIONAL



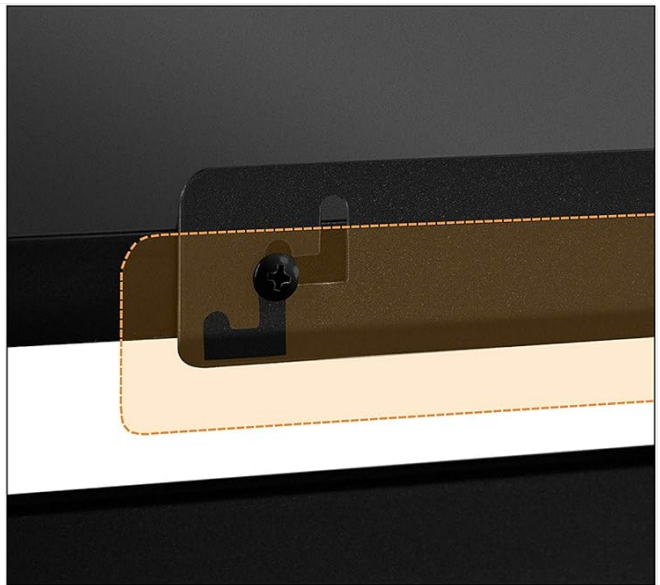
Two views of the table side-by-side, illustrating its transformation from a flat desk suitable for laptop use to a tilted drafting table for creative work.

Using the Movable Pencil Ledge:

The movable pencil ledge can be attached to the front edge of the adjustable tabletop to prevent items like pencils, pens, or papers from sliding off when the table is tilted. Simply slide it into the designated slots on the front edge of the tabletop.



Smooth Round Edge



Movable Pencil Ledge



Strong Steel Structure



Screw-in Protective Pads

Detailed views of the table's construction and features, including the smooth rounded edges for safety, a movable pencil ledge to prevent items from sliding, the robust steel frame for stability, and adjustable screw-in protective pads for floor protection and leveling.

General Use:

The table can be used flat for general desk work, such as using a laptop, or tilted for drawing, drafting, or reading. The included stool provides comfortable seating for extended periods of use.



The drafting table configured as a standard desk, demonstrating its versatility for general office or home use, alongside the stool.



A person actively using the drafting table with the tabletop tilted, engaged in drawing, showcasing the ergonomic benefits of the adjustable design.

MAINTENANCE

- **Cleaning:** Wipe the tabletop and frame with a soft, damp cloth. Avoid using harsh chemicals or abrasive cleaners, as they may damage the finish.
- **Regular Checks:** Periodically inspect all screws and bolts to ensure they remain tight. Retighten as necessary to maintain stability and safety.
- **Avoid Excessive Moisture:** Do not expose the table to excessive moisture or direct sunlight for prolonged periods, as this may cause warping or discoloration.
- **Lubrication:** If the tabletop adjustment mechanism becomes stiff, a small amount of silicone-based lubricant can be applied to the moving parts.

TROUBLESHOOTING






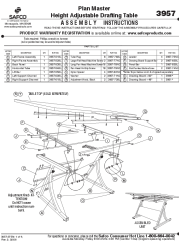
Problem	Possible Cause	Solution
Table is wobbly/unstable	Loose fasteners; Uneven floor	Ensure all screws and bolts are tightened. Adjust the screw-in protective pads on the feet to level the table on uneven surfaces.
Tabletop adjustment is stiff	Lack of lubrication; Dust/debris in mechanism	Clean the adjustment mechanism. Apply a small amount of silicone-based lubricant to the moving parts.
Parts missing during assembly	Packaging error	Contact Yaheetech customer support with your purchase details and the specific missing parts.
Scratches on surface	Improper handling; Sharp objects	Use a soft cloth for cleaning. Avoid placing sharp or abrasive objects directly on the tabletop. Consider using a desk mat.

SPECIFICATIONS

Feature	Detail
Brand	Yaheetech
Product Dimensions (LxWxH)	47.2" x 23.6" x (30-40.6)" (approx. 55.51"D x 23.62"W x 35.83"H)
Base Material	Alloy Steel
Top Material Type	Plastic
Finish Type	Powder Coated
Special Feature	Adjustable Tabletop
Room Type	Office, Home, School
Assembly Required	Yes
Number of Drawers	2 (implied from product details, though not explicitly visible as drawers in images, often refers to side storage)

CUSTOMER SUPPORT

For any questions, concerns, or assistance with your Yaheetech Multi-Functional Drafting Table, please contact our customer support team. Refer to your purchase documentation or the Yaheetech official website for contact information. Please have your product model number (B08NFY86ZG) and purchase date ready when contacting support.

	<p>Yaheetech Drafting Table Assembly Instructions</p> <p>Comprehensive assembly instructions for the Yaheetech Drafting Table (Model # 611097), including parts list, safety warnings, and step-by-step guidance for building the desk and stool.</p>
<p>Installation instruction</p> 	<p>Installation Instructions for Adjustable Drafting Table and Stool</p> <p>Detailed assembly instructions for the adjustable drafting table and optional stool. Includes parts list, step-by-step guidance, and important warnings for safe installation.</p>
<p>ASSEMBLY INSTRUCTION</p> <p>4-in-1 Multi-Functional Coffee Table</p> 	<p>Assembly Instructions for 4-in-1 Multi-Functional Coffee Table</p> <p>Detailed assembly instructions for the 4-in-1 Multi-Functional Coffee Table with storage, LED lights, and charging station. Includes parts list, hardware list, and step-by-step assembly guide.</p>
	<p>Costume Design and Illustration: Wiley Technical Series for Vocational Schools</p> <p>An overview of The Wiley Technical Series, featuring textbooks on drafting and design for vocational and industrial schools, including Costume Design and Illustration by Ethel Traphagen, published by John Wiley & Sons.</p>
	<p>Hylone High Back Drafting Chair Assembly and Adjustment Guide</p> <p>A comprehensive guide to assembling and adjusting your Hylone High Back Drafting Chair, including parts list, step-by-step assembly instructions, and adjustment features for optimal comfort and ergonomics.</p>
	<p>Safco Plan Master 3957 Height Adjustable Drafting Table Assembly Instructions</p> <p>Detailed assembly instructions and operating guide for the Safco Plan Master 3957 height adjustable drafting table. Includes parts list, step-by-step assembly, and usage tips for this Safco drafting table.</p>