

LEGO 21324

LEGO Ideas 123 Sesame Street 21324 Building Kit

OFFICIAL INSTRUCTION MANUAL

Model: 21324 | Brand: LEGO

Introduction

This manual provides detailed instructions for assembling and caring for your LEGO Ideas 123 Sesame Street 21324 Building Kit. Designed for adult builders, this set allows you to recreate the beloved 123 Sesame Street building and its iconic characters. Enjoy a mindful and creative building experience as you bring this classic street corner to life.

The set features Bert and Ernie's apartment, Elmo's bedroom, Bert's rooftop birdhouse, Hooper's Store, Big Bird's nest, and Oscar the Grouch's trash can, all packed with authentic details and accessories.

What's in the Box

Your LEGO Ideas 123 Sesame Street 21324 Building Kit contains **1,367 LEGO Building Elements**. These elements are organized into numbered bags to facilitate the building process. Please ensure all bags are present before beginning assembly.

The set also includes the following character minifigures and figures:

- Elmo minifigure
- Cookie Monster minifigure
- Bert minifigure
- Ernie minifigure

- Oscar the Grouch figure
- Big Bird figure
- Slimey the Worm figure
- Dorothy the Goldfish figure
- Radar the Teddy Bear figure
- Rubber Ducky figure



Image: A collection of LEGO minifigures and figures from the 123 Sesame Street set, including Elmo, Cookie Monster, Bert, Ernie, Oscar the Grouch, and Big Bird.

Setup & Assembly

The LEGO Ideas 123 Sesame Street set is designed for a rewarding building experience. Follow the step-by-step instructions provided in the accompanying printed building guide. Each step clearly illustrates which pieces are needed and how they connect.

1. **Preparation:** Find a clean, well-lit workspace. Open the numbered bags one at a time as indicated in the instruction manual.
2. **Follow Instructions:** Carefully follow the visual instructions. Pay attention to piece orientation and color.
3. **Enjoy the Process:** Take your time and enjoy the intricate details of the build. This set is designed to evoke nostalgic memories and provide a relaxing, creative outlet.
4. **Character Placement:** Once the main structure is complete, place your minifigures and figures in their designated areas or create your own scenes.



Image: The fully assembled LEGO Ideas 123 Sesame Street set, showcasing the detailed building and street corner with various characters.

Key Features & Details

This LEGO set is rich with authentic details and interactive elements:

- **123 Sesame Street Building:** Explore Bert and Ernie's apartment, complete with their iconic portrait and Ernie's bathtub. Visit Elmo's bedroom, featuring familiar items.
- **Hooper's Store:** A detailed rendition of the beloved store, adding to the street corner's authenticity.
- **Big Bird's Nest & Oscar's Trash Can:** Essential elements of the Sesame Street experience, faithfully recreated.
- **Minifigure Interactions:** Position the included minifigures and figures to recreate classic scenes or invent new adventures.



Image: A close-up view of an interior section of the LEGO 123 Sesame Street set, showing Cookie Monster on a couch with a television and a picture of Count von Count.



Image: Elmo minifigure standing outside Hooper's Store on the LEGO 123 Sesame Street set, with detailed storefront elements.

Product Overview Video

Your browser does not support the video tag.

Video: A comprehensive overview of the LEGO Ideas 123 Sesame Street set, showcasing its various sections and characters.

Display & Care

This LEGO set is designed as a build-and-display model, perfect for showcasing in your home or office. Its dimensions make it a prominent display piece.

- **Placement:** Display on a stable, flat surface away from direct sunlight to prevent color fading.
- **Cleaning:** Dust regularly with a soft brush or compressed air. For deeper cleaning, gently wash with mild soap and water, then air dry.
- **Storage:** If disassembling for storage, keep pieces organized to facilitate future reassembly.

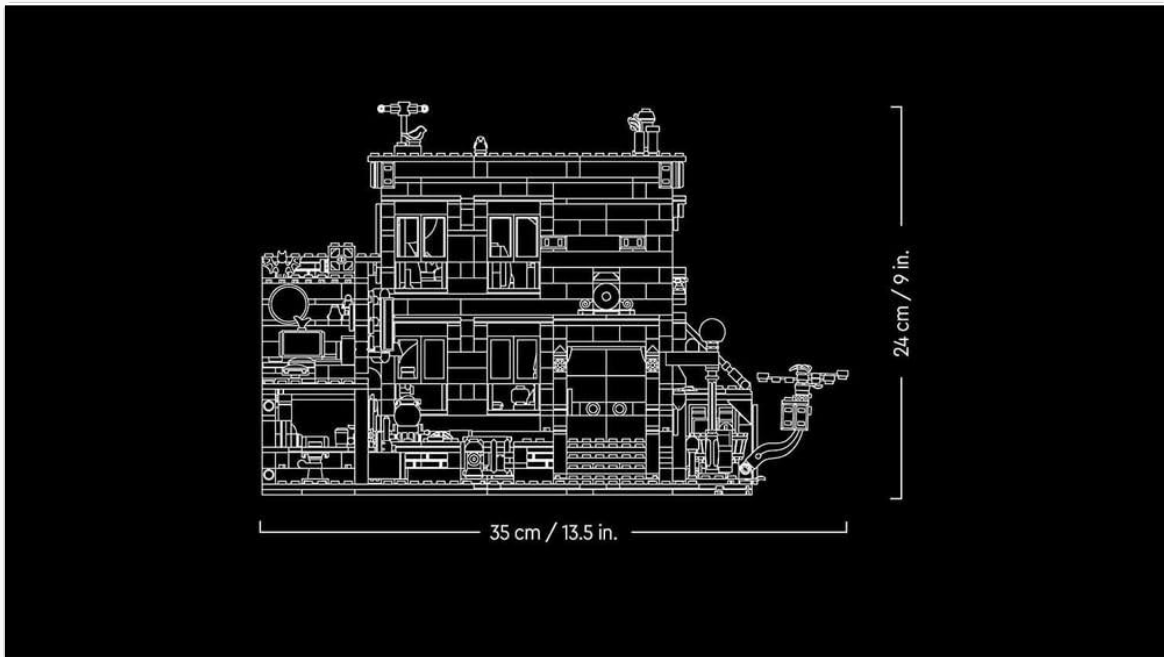


Image: A diagram illustrating the dimensions of the assembled LEGO Ideas 123 Sesame Street set, showing its height of 24 cm (9.4 inches) and width of 35 cm (13.5 inches).

Specifications

Attribute	Detail
Brand	LEGO
Model Name	123 Sesame Street
Model Number	21324
Number of Pieces	1,367
Item Dimensions (L x W x H)	14.88 x 13.94 x 3.7 inches
Material Type	Plastic
Age Range Description	Adult (18+ years)

Troubleshooting

If you encounter any issues during assembly or with your completed model, please refer to the following:

- **Missing Pieces:** Double-check all bags and the building area. If a piece is genuinely missing, contact LEGO Customer Service for replacement parts.
- **Assembly Difficulty:** Review the instruction manual carefully. Sometimes a small detail can be overlooked. Ensure pieces are pressed firmly together.
- **Stability Issues:** Verify that all connections are secure and that the model is built on a flat, stable surface.

Warranty & Support

LEGO products are manufactured to high-quality standards. For any questions regarding product quality, missing parts, or assembly assistance, please contact LEGO Customer Service directly. Information on how to reach them can typically be found on the LEGO website or on the product packaging.