

OMOTON OM

OMOTON OM Bluetooth Mouse Instruction Manual

Model: OM

INTRODUCTION

Thank you for choosing the OMOTON OM Bluetooth Mouse. This ultra-thin wireless mouse is designed for seamless compatibility with a wide range of Bluetooth-enabled devices, including iPads, iPhones (iPadOS 13/iOS 13 and above), computers, laptops, PCs, notebooks, and Mac series. Its ergonomic design, adjustable DPI, and silent click features enhance your productivity and comfort. Please read this manual carefully to ensure proper setup and operation.

PRODUCT OVERVIEW

HIGH SENSITIVITY

Easily switch between 3 DPI levels and adjustable speed of the mouse



Image: The OMOTON Bluetooth Mouse showcasing its ergonomic design with comfortable and durable click features.

The OMOTON OM Bluetooth Mouse features an ergonomic design for comfortable use. It includes a scroll wheel, left-click button, and right-click button. The ultra-thin profile makes it highly portable.

BATTERY INSTALLATION STEPS



1 Open the cover



2 Insert the battery



3 Cover the cover



Image: Diagram illustrating the 3-level adjustable DPI settings (800, 1200, 1600) on the OMOTON Bluetooth Mouse.

The mouse offers 3 adjustable DPI levels (800, 1200, 1600) for precise tracking, suitable for various tasks and games. DPI can be adjusted by pressing the vertical scrolling and right button for more than 3 seconds simultaneously.

SETUP

Battery Installation

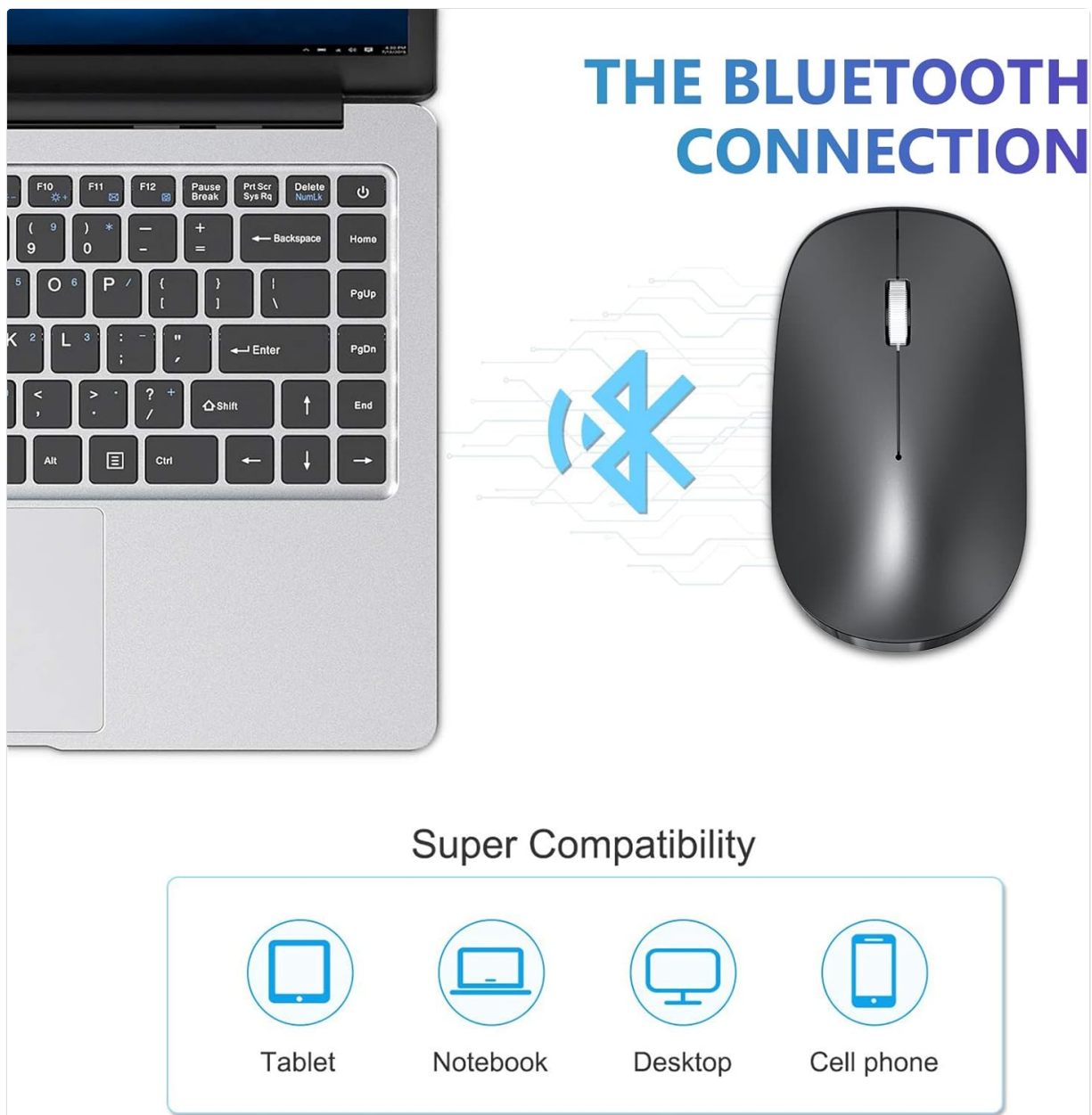


Image: Step-by-step guide for installing the AA battery into the OMOTON Bluetooth Mouse.

1. Gently open the top cover of the mouse.
2. Insert one AA battery (not included) into the battery compartment, ensuring correct polarity.
3. Replace the top cover, ensuring it clicks securely into place.

Bluetooth Pairing

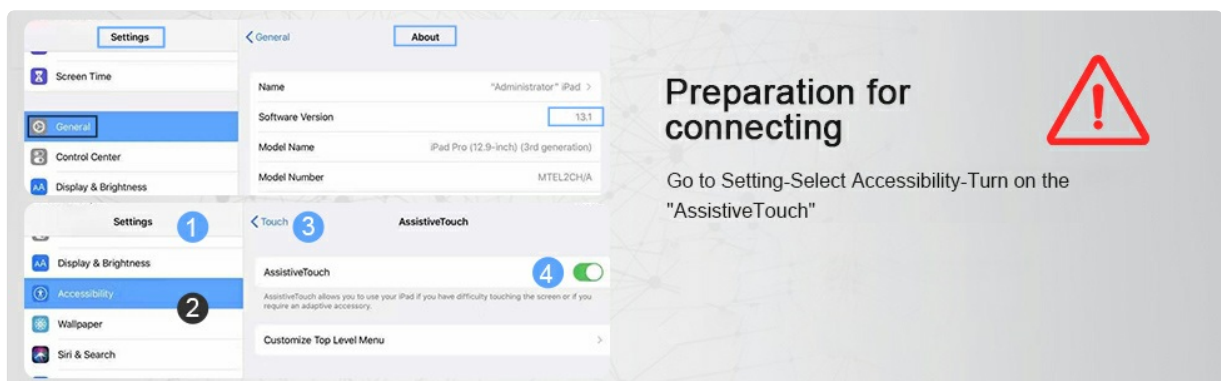


Image: Screenshot showing the 'AssistiveTouch' setting on an iPad, crucial for mouse functionality.

1. Ensure your device's system is updated to iPadOS 13/iOS 13 or above for iPad/iPhone.

2. On your iPad/iPhone, go to **Settings > Accessibility > Touch > AssistiveTouch** and turn it **ON**.
3. Turn on the OMOTON Bluetooth Mouse using the switch on its underside.
4. On your device, go to **Settings > Bluetooth** and turn Bluetooth **ON**.
5. The mouse will appear as "Bluetooth Mouse" or similar in the list of available devices. Select it to pair.
6. Once paired, the mouse is ready for use.

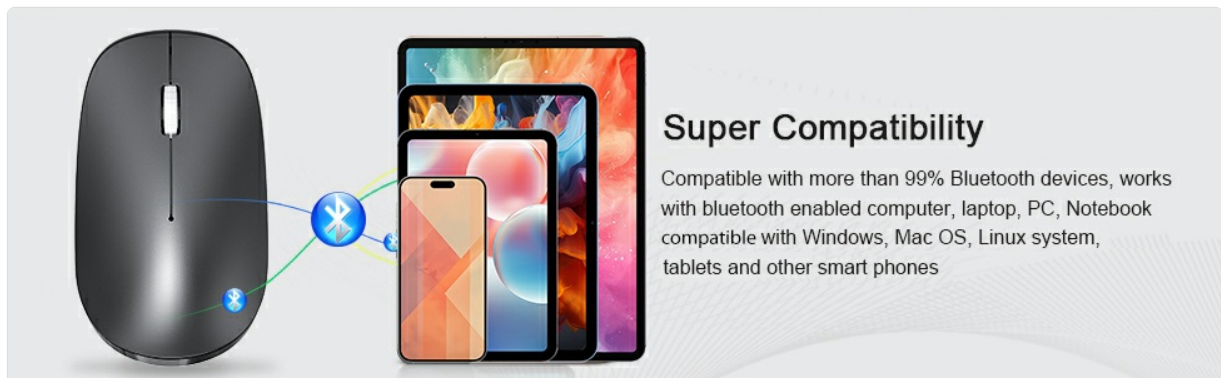


Image: Illustration showing the OMOTON Bluetooth Mouse connecting to a tablet, notebook, desktop, and cell phone, highlighting its broad compatibility.

The mouse is compatible with iPad Series (iPadOS 13+), Mac Series, Windows devices (XP/7/8/10/Vista), Linux systems, and Android tablets.

OPERATING INSTRUCTIONS

DPI Adjustment

To adjust the mouse sensitivity (DPI), press the vertical scrolling wheel and the right-click button simultaneously for more than 3 seconds. The mouse will cycle through 800, 1200, and 1600 DPI settings.

Power Saving Mode

The mouse will automatically enter power-saving mode after 30 minutes of inactivity. To wake the mouse, press any key and wait 2-3 seconds for it to reconnect.

Silent Click Feature

The OMOTON Bluetooth Mouse features a mute design, ensuring quiet clicks for a distraction-free work environment.

MAINTENANCE

- Keep the mouse clean by wiping it with a soft, dry cloth.
- Avoid exposing the mouse to extreme temperatures or moisture.
- Replace the AA battery when the mouse's performance degrades or it fails to connect.

TROUBLESHOOTING

- **Mouse not connecting:** Ensure Bluetooth is enabled on your device and the mouse is turned on. Check if the battery needs replacement. For iPad/iPhone, verify AssistiveTouch is enabled.
- **Lag or intermittent connection:** Ensure the mouse is within the 33ft (10m) operating range. Check for interference from other wireless devices.

- **Cursor not moving smoothly:** Adjust the DPI settings to your preference. Ensure the optical sensor on the underside is clean.

SPECIFICATIONS

Feature	Detail
Product Dimensions	4.33 x 2.52 x 1.18 inches
Item Weight	1.76 ounces
Connectivity Technology	Bluetooth 5.0
Movement Detection Technology	Optical
DPI Levels	800, 1200, 1600
Battery Requirement	1 AA battery (not included)
Operating Distance	Up to 33ft (10m)

OFFICIAL PRODUCT VIDEO

Video: An official overview of the OMOTON Wireless Bluetooth 5.0 Mouse, demonstrating its features and functionality.

WARRANTY AND SUPPORT

For warranty information or technical support, please refer to the product packaging or visit the official OMOTON website. Keep your purchase receipt for warranty claims.