

Lesim TI01

Lesim WiFi Smart IR Remote Controller (Model TI01) User Manual

Model: TI01 | Brand: Lesim

1. INTRODUCTION

The Lesim WiFi Smart IR Remote Controller is designed to integrate your infrared-controlled home appliances into a smart home system. This device allows you to control various appliances such as air conditioners, TVs, STBs, TV Boxes, DVDs, projectors, and fans using a smartphone application or voice commands through Amazon Alexa and Google Assistant. This manual provides detailed instructions for setup, operation, and troubleshooting to ensure optimal performance.

2. PRODUCT OVERVIEW

The Lesim Smart IR Remote Controller is a compact device that acts as a universal infrared remote blaster. It features a 360° infrared coverage to control devices within a range of up to 26.2 feet (8 meters).

2.1 Device Components

Product Details



Product Specification	
Power input	5V 1A
Standby power consumption	≤0.6W
Infrared frequency	38 K
Operating temperature	0 ~ 50 degrees
Working humidity	≤85% (No condensation)
Product size	90x23mm
Wireless protocol	2.4G WIFI



Image 1: Lesim Smart IR Remote Controller with labeled components.

- **Reset Button:** Used for resetting the device to factory settings or initiating pairing mode.
- **USB Port:** For power supply (5V 1A).
- **Indicator:** Displays the device's status (e.g., pairing mode, connected, disconnected).

2.2 Key Features

- **Universal Compatibility:** Supports most home appliances with 38K Hz IR frequency (no RF). Includes AC, TV, STB, TV Box, DVD, Projector, Fans, etc.
- **Voice Control:** Compatible with Amazon Alexa and Google Home for hands-free control.
- **APP Remote Control:** Control multiple appliances remotely via the Smart Life App or Tuya Smart App.
- **Scheduling & Scenes:** Set timers to automate appliance operation and customize scenes for multiple devices.
- **360° Wide Coverage:** Seven infrared lights provide full-range coverage up to 26.2 feet.
- **DIY Learning Function:** Allows adding devices not found in the pre-programmed brand lists by learning from your existing remote.


- **Device Sharing:** Share control of the device with family members through the app.

3. SPECIFICATIONS

Refer to the table below for detailed product specifications.

Product Description

Product Name:	Smart IR Remote Controller
Model:	TI01
Input:	5V1A
Type:	Micro USB power supply
Infrared frequency:	38K
Operation Temperature:	-10°C-55°C
Working Humidity:	10%-90%RH(No Condensation)
Wireless Connection:	2.4G-Wi-Fi
Product Size:	90×23MM



Note:
Smart IR Universal Control only supports infrared signal remote control devices, and does not support device RF signal remote control.

Image 2: Product Specifications.

Feature	Specification
Product Name	Smart IR Remote Controller
Model	TI01 (Internal ID: 59327f08-aae7-4be9-9711-f9ffabb66c52)
Input Power	5V 1A (Micro USB)
Standby Power Consumption	≤0.6W
Infrared Frequency	38K Hz
Operating Temperature	-10°C to 55°C (14°F to 131°F)
Working Humidity	10%-90% RH (Non-condensing)
Wireless Connection	2.4G Wi-Fi (IEEE 802.11 b/g/n)
Product Dimensions	90mm x 23mm (3.54 x 3.54 x 0.79 inches)
Item Weight	4.6 ounces
Max Supported Devices	80,000+ (via cloud database)
Special Feature	Universal Infrared Control

Note: The Smart IR Universal Control only supports infrared signal remote control devices and does not support RF (Radio

4. SETUP INSTRUCTIONS

Follow these steps to set up your Lesim Smart IR Remote Controller.

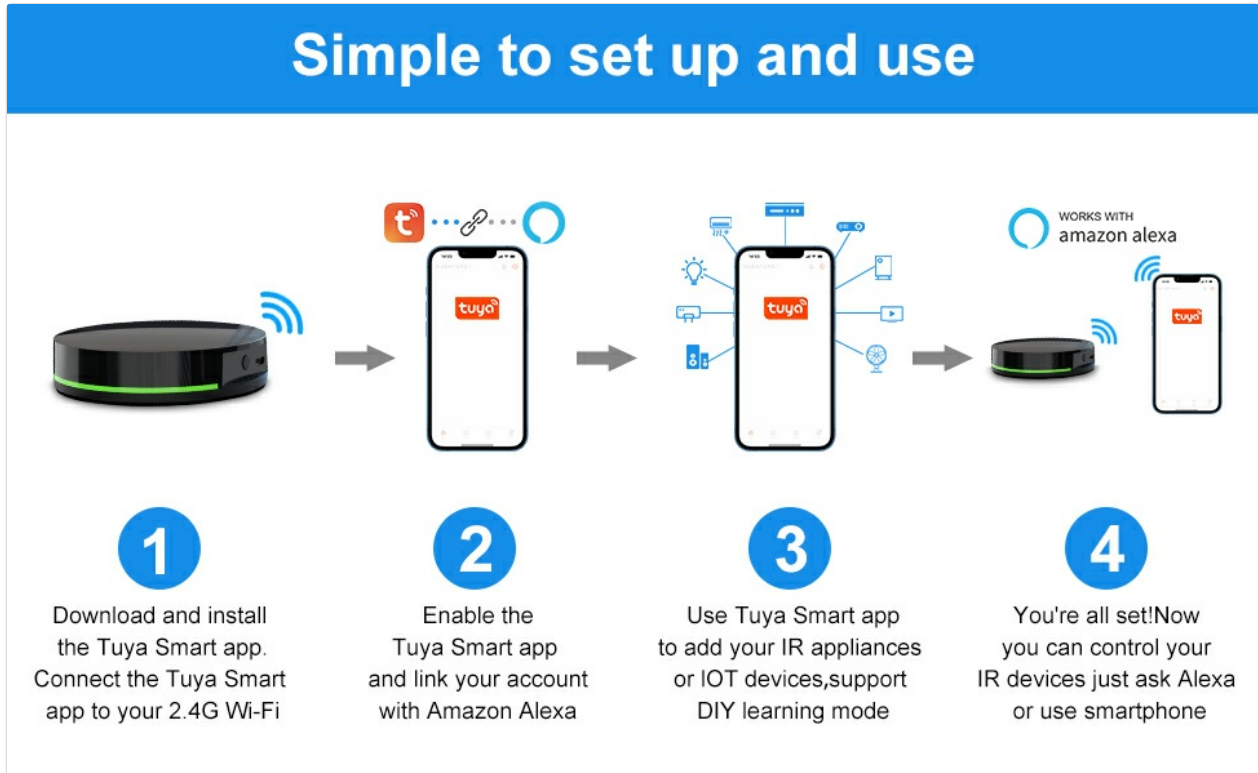


Image 3: Simple setup process using the Tuya Smart App.

- 1. Power On:** Connect the Smart IR Remote Controller to a 5V 1A power source using the provided USB cable. The indicator light will illuminate.
- 2. Download App:** Download and install the **Tuya Smart App** or **Smart Life App** from your smartphone's app store (available for iOS and Android). *Note: Some users have reported better compatibility with the Tuya Smart App.*
- 3. Register/Login:** Open the app and register a new account or log in with an existing one.
- 4. Add Device:**
 - Ensure your smartphone is connected to a **2.4GHz Wi-Fi network**. The device does not support 5GHz Wi-Fi.
 - In the app, tap the "+" icon (usually in the top right corner) to add a device.
 - Select "Universal Remote Control" or "IR Remote Control" from the device list.
 - Follow the on-screen instructions to put the device into pairing mode (often involves pressing and holding the reset button until the indicator light blinks rapidly).
 - Enter your Wi-Fi network password when prompted. The device will connect to your Wi-Fi.
- 5. Add IR Appliances:** Once the Smart IR Remote Controller is added, you can add your IR-controlled appliances (e.g., TV, AC).
 - Select the type of appliance you want to add (e.g., TV, Air Conditioner).
 - Choose the brand from the provided list. The app will attempt to match a remote code. Test the functions to ensure compatibility.
 - If your brand is not listed or the codes do not work, use the **DIY Learning** function (see Section

5.3).

6. Connect to Voice Assistants (Alexa/Google Assistant):

- Open the Amazon Alexa app or Google Home app.
- Go to "Skills & Games" (Alexa) or "Works with Google" (Google Home).
- Search for "Tuya Smart" or "Smart Life" skill/service and enable it.
- Link your Tuya Smart/Smart Life account with your voice assistant account.
- Discover devices. Your IR-controlled appliances added in the app should now be discoverable by Alexa or Google Assistant.

5. OPERATING INSTRUCTIONS

Once set up, you can control your appliances using the app or voice commands.

5.1 App Remote Control

App Remote Control & Set Schedule

Control IR appliances with Smart life App anywhere anytime

Set timers to turn on/off appliances at a specific time or customize scenes

Share the device to your family members to control together



Turn on TV at 2:00 PM



Image 4: Controlling devices and setting schedules via the app.

- Open the Tuya Smart or Smart Life App.

- Select the specific appliance you wish to control.
- Use the virtual remote interface within the app to operate your device (e.g., power on/off, change channels, adjust volume, set AC temperature).

5.2 Voice Control



Image 5: Voice control with Amazon Alexa and Google Assistant.

After linking your account, use voice commands with your Amazon Alexa or Google Assistant device:

- "Alexa, turn on the TV."
- "Hey Google, set the AC to 24 degrees."
- "Alexa, change channel to 5 on TV."

5.3 DIY Learning Function

Intelligent DIY Learning Function

If your device is not in the brand lists, it supports DIY learning to create more custom remote templates as needed.

Integrate almost all infrared remotes to your smartphone.

Note: Devices connected in DIY mode cannot be controlled by Alexa and Google Home for the time being.



Image 6: DIY Learning function for custom remote templates.

If your appliance's brand or model is not available in the app's database, you can use the DIY learning function:

1. In the app, select the option to add a DIY remote.
2. Follow the on-screen prompts to teach the Smart IR Remote Controller commands from your original remote control. This typically involves pointing your original remote at the Smart IR device and pressing buttons.

Important Note: Devices configured using DIY learning may not be fully compatible with Amazon Alexa or Google Home voice control for all functions. Voice control functionality for DIY devices is limited.

5.4 Main Function Compatibility

The following table outlines the compatibility of various functions with smartphones, Amazon Echo, and Google Home.

Main Function (Work Amazon Echo, Google Home , Smartphone)					
Devices	Function	Work with	Smartphone	Amazon Echo	Google Home
Air Conditioning(AC)	Turn on/off AC		✓	✓	✓
	Turn down/up AC		✓	✓	✓
	Set temperature to (value)		✓	✓	✓
	Mode		✓	✗	✗
	Air Volume		✓	✗	✗
TV	Turn on/off TV		✓	✓	✓
	Channel up/down TV		✓	✓	✓
	Volume up/down TV		✓	✓	✓
	Change channel to (value)		✓	✓	✓
	Homepage		✓	✗	✗
	Exit		✓	✗	✗
	Up/down/left/right/ok		✓	✗	✗
FAN	Turn on/off Fan		✓	✓	✓
	Swing		✓	✗	✗
	Mode		✓	✗	✗
	Timer		✓	✗	✗
	Wind Volume		✓	✗	✗
DIY	Learn most of the functions of the Infrared remote control		✓	✗	✗

Image 7: Function compatibility across different control methods.

Device	Function	Smartphone	Amazon Echo	Google Home
Air Conditioning (AC)	Turn on/off AC	✓	✓	✓
	Turn down/up AC	✓	✓	✓
	Set temperature (value)	✓	✓	✓
	Mode	✓	✗	✗
	Air Volume	✓	✗	✗
TV	Turn on/off TV	✓	✓	✓
	Channel up/down TV	✓	✓	✓
	Volume up/down TV	✓	✓	✓
	Change channel (value)	✓	✗	✗
	Homepage	✓	✗	✗
	Exit	✓	✗	✗
	Up/down/left/right/ok	✓	✗	✗

Device	Function	Smartphone	Amazon Echo	Google Home
FAN	Turn on/off Fan	✓	✓	✓
	Swing	✓	X	X
	Mode	✓	X	X
	Timer	✓	X	X
	Wind Volume	✓	X	X
DIY	Learn most of the functions of the Infrared remote control	✓	X	X

6. MAINTENANCE

To ensure the longevity and optimal performance of your Lesim Smart IR Remote Controller, follow these simple maintenance guidelines:

- **Placement:** Position the device in a central location within the room, ensuring no physical obstructions (like walls or large furniture) block the infrared signal path to your appliances.
- **Cleaning:** Use a soft, dry cloth to clean the device. Avoid using liquid cleaners or abrasive materials, as these can damage the surface or internal components.
- **Power Supply:** Always use a stable 5V 1A power adapter. Do not use power sources with incorrect voltage or current.
- **Environment:** Keep the device away from extreme temperatures, direct sunlight, and high humidity. Ensure the operating environment is within the specified temperature and humidity ranges.

7. TROUBLESHOOTING

If you encounter issues with your Lesim Smart IR Remote Controller, refer to the following common problems and solutions:

- **Device not connecting to Wi-Fi:**
 - Ensure your Wi-Fi network is 2.4GHz. The device does not support 5GHz networks.
 - Check that your Wi-Fi password is entered correctly in the app.
 - Move the device closer to your Wi-Fi router.
 - Try resetting the device by pressing and holding the reset button for 5-10 seconds until the indicator light blinks rapidly, then attempt pairing again.
- **Appliance not responding to commands:**
 - Ensure the Smart IR Remote Controller has a clear line of sight to the appliance. Walls or other obstacles can block the infrared signal.
 - Verify that the correct remote template for your appliance's brand and model is selected in the app.
 - If using a pre-programmed template, try different templates for your brand if available.
 - Use the DIY Learning function to teach the device commands from your original remote.
 - Confirm the Smart IR Remote Controller is powered on and connected to Wi-Fi (indicator light

status).

- **Voice control not working with Alexa/Google Assistant:**

- Ensure the "Tuya Smart" or "Smart Life" skill/service is enabled and linked correctly in your Alexa or Google Home app.
- Redo device discovery in the Alexa/Google Home app.
- Verify that the appliance was added using a pre-programmed template. Devices added via DIY Learning may have limited or no voice control functionality.
- Check the specific commands you are using. Refer to the app for suggested voice commands or the compatibility table in Section 5.4.

- **Indicator light not on:**

- Check the USB power cable and adapter. Ensure they are securely connected and functioning correctly.
- Try a different USB cable or power adapter.

8. WARRANTY AND SUPPORT

For warranty information and technical support, please contact Lesim customer service through the retailer where you purchased the product or visit the official Lesim website. Keep your purchase receipt as proof of purchase for warranty claims.

Lesim is committed to providing quality smart home products. For further assistance, refer to the support section within the Tuya Smart or Smart Life application.