

GLOBE 51725

Instruction Manual

GLOBE ELECTRIC TRISTAN 1-LIGHT DIMMABLE WALL SCONCE (MODEL: 51725)

Introduction

Welcome to the GLOBE Electric Tristan Collection. This 1-Light Dimmable Wall Sconce, Model 51725, combines modern design with versatile functionality. Featuring a matte black finish, faux walnut accent, and a stepless rotary dimmer switch, it is designed to provide ideal lighting for various spaces such as living rooms, bedrooms, home offices, or dens. Its 2-in-1 design allows for both plug-in and hardwire installation, offering flexibility to suit your needs.



Figure 1: The GLOBE Electric Tristan Wall Sconce, showcasing its matte black finish and faux walnut accent.

Important Safety Information

Please read and understand all instructions before beginning installation and use. Failure to follow these instructions may result in electric shock, fire, or other hazards that could cause injury or property damage.

- Always disconnect power at the main circuit breaker before installation or maintenance.
- Ensure all electrical connections are in accordance with local codes, ordinances, and the National Electric Code (NEC).
- If you are unsure about proper electrical wiring, consult a qualified electrician.
- Do not exceed the maximum wattage specified for the bulb.
- This product is for indoor use only.

What's Included

Verify that all components are present before beginning installation:

- Wall Sconce
- Mounting Hardware
- Instruction Sheet

Note: Bulb is not included and must be purchased separately.

Product Specifications

Attribute	Detail
Brand	GLOBE
Model Name	Tristan
Model Number	51725
Color	Matte Black, Faux Walnut
Material	Metal
Product Dimensions	6"L x 7.9"W x 9.6"H
Power Source	Corded Electric
Installation Type	Wall Mount (Plug-in or Hardwire)
Special Feature	Dimmable (Stepless Rotary Switch)
Voltage	120 Volts
Max Wattage	60 Watts
Bulb Base	E26/Medium Base
Compatible Bulbs	LED, Incandescent, Halogen (Dimmable LED or Incandescent Recommended)
Item Weight	1.65 Pounds

Setup and Installation

The Tristan Wall Sconce offers two installation options: plug-in or hardwire. Choose the method that best suits your needs.

Option 1: Plug-in Installation

For a quick and easy setup, simply mount the sconce to your desired wall location using the provided mounting hardware. Ensure the cord can reach a power outlet. This method is ideal for temporary installations or when hardwiring is not feasible.



Figure 2: Example of the sconce installed as a plug-in unit, showing the visible power cord.

Option 2: Hardwire Installation

For a sleek, cordless look, the sconce can be hardwired directly into your home's electrical system. This requires cutting the plug from the cord and connecting the wires to a junction box. **It is highly recommended to consult a qualified electrician for hardwire installation to ensure safety and compliance with electrical codes.**

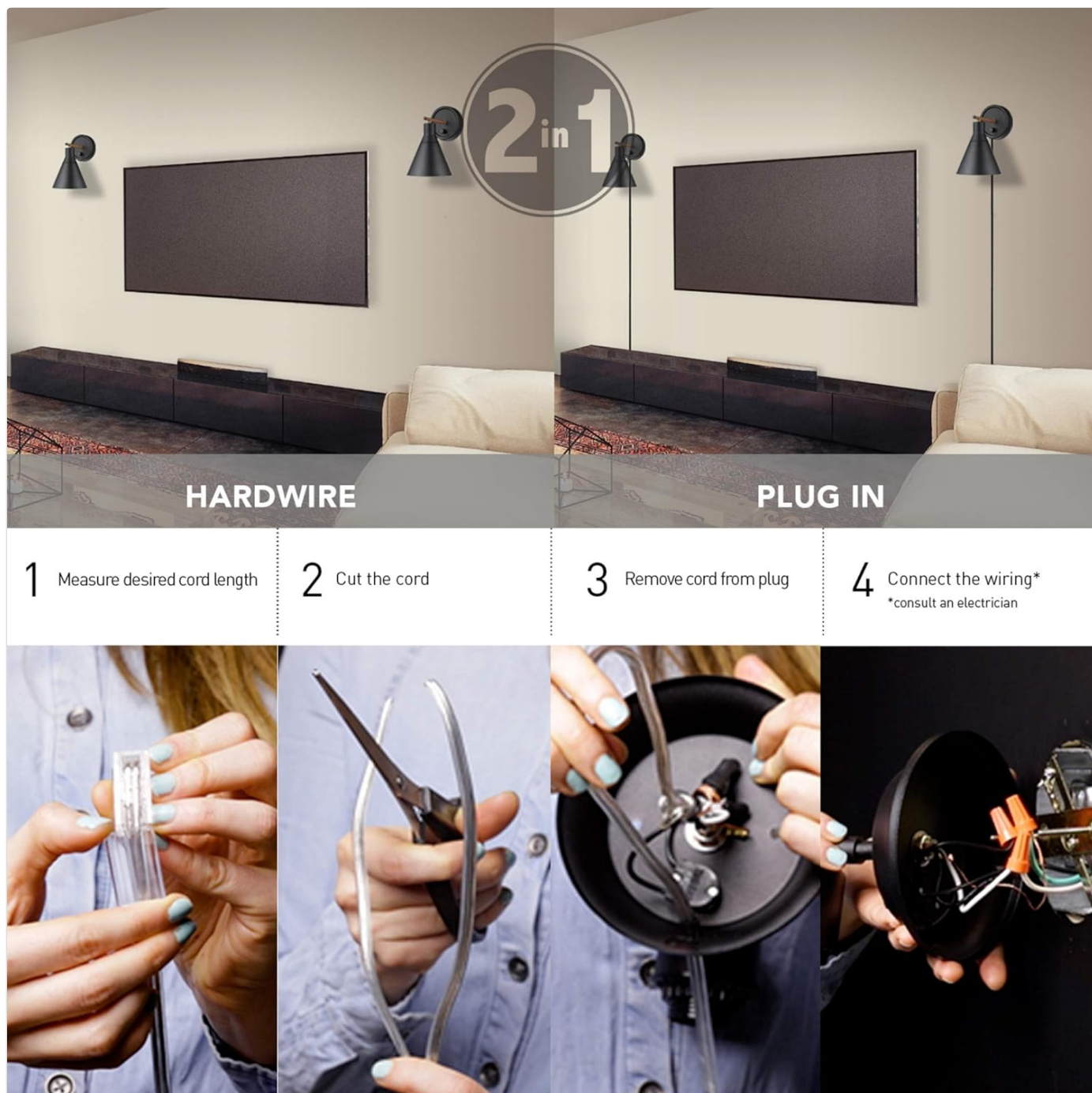


Figure 3: Installation diagram showing the process for both hardwire and plug-in options. For hardwiring, the cord is cut and connected directly to the electrical wiring.

General Installation Steps (for both options):

1. **Prepare the Mounting Surface:** Choose a suitable location on the wall. Ensure it is structurally sound to support the sconce.
2. **Attach Mounting Plate:** Secure the provided mounting plate to the wall using the appropriate hardware (screws, anchors).
3. **Connect Wiring (Hardwire Only):** If hardwiring, carefully connect the sconce's wires to your home's electrical wires according to the instruction sheet and local electrical codes. Ensure power is OFF at the breaker.
4. **Secure Sconce:** Attach the sconce body to the mounting plate.
5. **Install Bulb:** Screw in one E26/Medium Base 60W Max bulb (sold separately). Dimmable LED or Incandescent bulbs are recommended for full dimmer functionality.
6. **Restore Power:** Turn on power at the main circuit breaker.



Figure 4: Detailed view of the sconce's canopy, showing the integrated stepless rotary dimmer switch.

Operating Instructions

The Tristan Wall Sconce features a convenient stepless rotary dimmer switch located on the canopy, allowing you to easily control the light output.

- **Turning On/Off:** Rotate the switch clockwise until you hear a click to turn the light on. Continue rotating clockwise to increase brightness. Rotate counter-clockwise to dim the light. Rotate counter-clockwise until you hear a click to turn the light off.
- **Dimming Function:** The stepless dimmer allows for precise control over the light intensity, from a soft glow to full brightness. Ensure you are using a dimmable bulb for this feature to work correctly.

Your browser does not support the video tag.

Video 1: A 360-degree spin of the Globe Electric Tristan Wall Sconce, showcasing its design and features, including the rotary switch.

Care and Maintenance

To maintain the appearance and functionality of your wall sconce, follow these simple care instructions:

- **Cleaning:** Always turn off and unplug the sconce (or disconnect power at the breaker for hardwired units) before cleaning. Wipe the fixture with a soft, dry cloth. Do not use abrasive cleaners, solvents, or polishes as they may damage the finish.
- **Bulb Replacement:** Ensure the light is off and cool before replacing the bulb. Follow the bulb requirements specified in the "Product Specifications" section.

Troubleshooting

If you experience issues with your wall sconce, refer to the following common problems and solutions:

Problem	Possible Cause	Solution
Light does not turn on.	No power to the fixture, loose bulb, faulty bulb, incorrect wiring (hardwire).	Check power supply at the outlet/breaker. Ensure bulb is screwed in tightly. Replace bulb. For hardwired units, verify wiring connections (consult electrician if needed).
Light flickers or dims unexpectedly.	Loose bulb, incompatible dimmer bulb, unstable power supply.	Ensure bulb is tightly screwed in. Use only dimmable bulbs with the rotary switch. Check household wiring for stability (consult electrician).
Dimmer switch not working.	Non-dimmable bulb installed, faulty switch.	Replace with a dimmable LED or incandescent bulb. If issue persists, contact customer support.


Warranty and Support


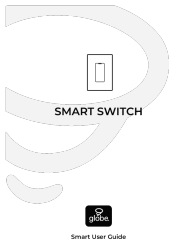

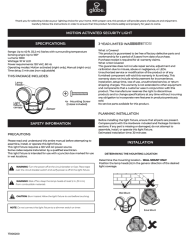

Warranty Information: According to the product specifications, this product comes with no stated warranty.

Customer Support: For further assistance, technical support, or inquiries regarding your GLOBE Electric product, please visit the official GLOBE Electric website or contact their customer service department. Refer to the product packaging for specific contact details.

[Visit the GLOBE Electric Store on Amazon](#)

Related Documents - 51725

	<p>Globe SMART FLOOR LAMP User Manual and Setup Guide</p> <p>Comprehensive guide for the Globe SMART FLOOR LAMP, including safety instructions, features, specifications, assembly, and connecting to the Globe Suite app and voice assistants like Google Home and Amazon Alexa.</p>
---	---

	<p>Globe Streamwatch Xtreme Prepaid User Manual and Setup Guide</p> <p>Comprehensive user manual for the Globe Streamwatch Xtreme Prepaid device. Learn how to connect to the internet, stream content on your TV, access apps via Google Play, and find troubleshooting solutions. Includes setup guides and device information.</p>
	<p>Globe Smart Switch User Guide</p> <p>User guide for the Globe Smart Switch, detailing installation, setup via the Globe Suite™ app, features like remote control, scheduling, and voice assistant integration. Learn how to enhance your home with smart lighting control.</p>
	<p>Globe Running Boards Assembly Guide for Haul LT Bicycle</p> <p>Step-by-step instructions and safety information for assembling Globe Running Boards onto your Globe Haul LT bicycle, including parts lists, torque specifications, and weight limits.</p>
	<p>Globe Motion Activated Security Light Installation and Operation Guide</p> <p>Comprehensive guide for installing, operating, and troubleshooting the Globe Motion Activated Security Light. Features include specifications, safety precautions, step-by-step installation instructions, and maintenance tips.</p>
	<p>Manual de Instrucciones para Cortadora Gastronómica Globe C9, C10, C12</p> <p>Manual de instrucciones detallado para las cortadoras gastronómicas Globe modelos C9, C10 y C12, cubriendo instalación, operación, limpieza, desinfección, afilado, mantenimiento y solución de problemas.</p>