

Razor GGC2030M

Razor Griddle GGC2030M User Manual

25-Inch 2-Burner Portable LP Propane Gas Grill Griddle

1. INTRODUCTION

This manual provides essential information for the safe assembly, operation, maintenance, and troubleshooting of your Razor Griddle GGC2030M 25-inch 2-Burner Portable LP Propane Gas Grill Griddle. Please read all instructions carefully before using the appliance to ensure proper function and to prevent injury or property damage. Keep this manual for future reference.

2. IMPORTANT SAFETY INFORMATION

WARNING: For outdoor use only. Do not store or use gasoline or other flammable vapors and liquids in the vicinity of this or any other appliance.

DANGER: If you smell gas:

1. Shut off gas to the appliance.
2. Extinguish any open flame.
3. Open lid.
4. If odor continues, keep away from the appliance and immediately call your gas supplier or fire department.

Failure to follow these instructions could result in fire, explosion, or burn hazard, which could cause property damage, personal injury, or death.

- Always operate the griddle on a level, stable surface.
- Keep children and pets away from the griddle during operation.
- Do not move the griddle while it is in use or hot.
- Ensure adequate ventilation.
- Never leave the griddle unattended when in use.
- Use only the pressure regulator and hose assembly supplied with this appliance.
- Check for gas leaks before each use.

3. PACKAGE CONTENTS

Verify that all components are present before assembly. If any parts are missing or damaged, do not attempt to assemble or operate the griddle. Contact customer support.

- Griddle Unit with 2 Burners
- Griddle Top Cover
- Folding Cart/Stand with Wheels
- Side Shelf
- Grease Management System (Cup)
- LP Gas Regulator and Hose Assembly
- Hardware Pack
- User Manual



Figure 3.1: Razor Griddle GGC2030M with all main components visible.

4. ASSEMBLY AND SETUP

Assembly typically requires two people. Follow the steps below for proper setup.

4.1 Unpacking

Carefully remove all components from the packaging. Retain packaging materials until you are certain all parts are present and the unit is assembled correctly.

4.2 Attaching the Stand and Wheels

1. Lay the griddle unit upside down on a soft, non-abrasive surface.
2. Attach the folding cart/stand to the main griddle body using the provided hardware. Ensure all bolts are securely tightened.
3. Attach the wheels to the designated axles on the stand.



Figure 4.1: Key features including the mobile cart design and side shelf.

4.3 Installing the Side Shelf and Grease Cup

1. Secure the side shelf to the griddle unit using the appropriate fasteners.
2. Insert the grease cup into the front access grease management system.

4.4 Connecting the LP Gas Tank

1. Ensure both burner control knobs are in the "OFF" position.
2. Connect the regulator hose to the griddle's gas inlet. Hand-tighten firmly.
3. Connect the other end of the regulator to a 1-pound LP cylinder or a 20-pound LP tank (with adapter hose, sold separately).
4. Perform a leak test: Apply a soapy water solution to all gas connections. Bubbles indicate a leak. If a leak is detected, turn off the gas, tighten connections, and retest. Do not use the griddle if a leak persists.

5. OPERATING INSTRUCTIONS

5.1 Pre-Seasoning the Griddle Surface

Before first use, the griddle surface should be seasoned to create a non-stick cooking surface and protect against rust.

1. Wash the griddle surface with warm, soapy water and rinse thoroughly. Dry completely.
2. Apply a thin, even layer of high-smoke-point cooking oil (e.g., flaxseed, grapeseed, or vegetable oil) to the entire cooking surface.
3. Light the burners to a medium-high setting. Allow the oil to burn off until it stops smoking (approximately 15-20 minutes).
4. Turn off the burners and let the griddle cool.
5. Repeat steps 2-4 at least 3-4 times, or until the surface develops a dark, even patina.

5.2 Lighting the Burners

1. Ensure the LP gas tank valve is fully open.
2. Push in and slowly turn a control knob to the "HIGH" position.
3. Press the igniter button repeatedly until the burner lights. You should hear a clicking sound and see a flame.
4. If the burner does not light within 5 seconds, turn the knob to "OFF", wait 5 minutes for gas to dissipate, and repeat the lighting procedure.
5. Once lit, adjust the flame to the desired cooking temperature.



Figure 5.1: Cooking on the griddle surface.

5.3 Cooking Tips

- Preheat the griddle for 10-15 minutes before cooking.
- Use a small amount of cooking oil or butter on the griddle surface for most foods.
- The two burners allow for different heat zones, enabling simultaneous cooking of various items at different temperatures.
- The griddle lid can be used to steam vegetables or melt cheese.

6. CARE AND MAINTENANCE

6.1 Cleaning the Griddle Surface

Clean the griddle surface after each use, while it is still warm but not excessively hot.

1. Scrape off any food debris with a griddle scraper or metal spatula into the grease trap.
2. Pour a small amount of water onto the warm griddle surface to deglaze and loosen stubborn residue. Scrape

again.

3. Wipe the surface clean with paper towels.
4. Apply a thin layer of cooking oil to the clean, dry griddle surface to maintain seasoning and prevent rust.

6.2 Cleaning the Grease Trap

Empty and clean the grease cup regularly to prevent overflow and maintain hygiene.

6.3 General Cleaning

Wipe down exterior surfaces with a damp cloth and mild detergent. Avoid abrasive cleaners that can damage the finish.

6.4 Storage

When not in use, store the griddle in a dry, protected area. The folding design and wheels facilitate easy transport and compact storage.



Figure 6.1: The griddle folded for transport.



Figure 6.2: Storing the griddle in a compact, upright position.

7. TROUBLESHOOTING

Problem	Possible Cause	Solution
Burner does not light	No gas flow; clogged burner port; faulty igniter.	Check LP tank connection and gas level. Clean burner ports. Check igniter spark.
Uneven heating	Clogged burner ports; griddle not level.	Clean burner ports. Ensure griddle is on a level surface.
Gas odor	Gas leak.	Immediately shut off gas. Perform leak test. Do not operate if leak persists.
Low flame, even on high	Low gas in tank; regulator issue.	Replace or refill LP tank. Check regulator for damage.

8. SPECIFICATIONS

- **Model:** GGC2030M
- **Brand:** Razor
- **Fuel Type:** LP Propane Gas
- **Burners:** 2
- **Cooking Surface Area:** 25 inches (approx. 362 sq. inches based on 25-inch width and typical depth)
- **Dimensions (Assembled):** 35"D x 43"W x 24"H (approximate, may vary slightly)
- **Material:** Alloy Steel / Carbon Steel Frame
- **Special Feature:** Portable, Folding Stand with Wheels
- **Included Components:** Lid, Shelf



Figure 8.1: Product dimensions and key specifications.


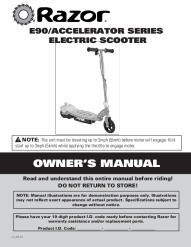

9. WARRANTY AND CUSTOMER SUPPORT



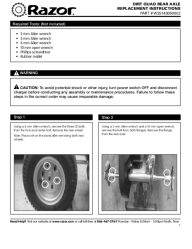
Razor products are manufactured to high-quality standards. For warranty information, please refer to the warranty card included with your product or visit the official Razor website. Keep your purchase receipt as proof of purchase. For technical assistance, replacement parts, or general inquiries, please contact Razor customer support:

- **Website:** www.razorgriddle.com (Example, actual URL may vary)
- **Phone:** Refer to product packaging or website for current contact numbers.

When contacting support, please have your model number (GGC2030M) and purchase date available.

Related Documents - GGC2030M

	<p>Razor E300 Electric Scooter Owner's Manual - Safety, Assembly, and Maintenance Guide</p> <p>Official owner's manual for the Razor E300 and E300S electric scooters. Learn about safety precautions, assembly steps, battery charging, pre-ride checks, usage, repair, maintenance, and troubleshooting.</p>
	<p>Razor E90 Electric Scooter Owner's Manual: Safety, Assembly, and Maintenance Guide</p> <p>Comprehensive owner's manual for the Razor E90/Accelerator Series Electric Scooter, covering safety warnings, assembly instructions, usage guidelines, maintenance, troubleshooting, parts, and warranty information.</p>
	<p>Razor E Prime Electric Scooter Owner's Manual and Safety Guide</p> <p>Comprehensive guide to the Razor E Prime Electric Scooter, covering safety warnings, assembly instructions, operation, charging, maintenance, troubleshooting, parts identification, warranty, and contact information.</p>

	<p>Razor Jetts & Jetts DLX Heel Wheels Owner's Manual and Safety Guide</p> <p>Comprehensive owner's manual and safety guide for Razor Jetts & Jetts DLX Heel Wheels, covering setup, usage, maintenance, and safety precautions for riders aged 8+. Includes product information, warranty, and contact details.</p>
	<p>Razor RipRider 360 Caster Trike Assembly and Safety Guide</p> <p>Comprehensive assembly instructions and safety guidelines for the Razor RipRider 360 caster trike. Learn how to safely build, operate, and maintain your RipRider 360.</p>
	<p>Razor Dirt Quad Rear Axle Replacement Instructions</p> <p>Step-by-step guide for replacing the rear axle on a Razor Dirt Quad, including required tools, safety warnings, and detailed instructions with visual descriptions.</p>

Documents - Razor – GGC2030M



[\[pdf\]](#) User Manual Owner's Manual Instructions Warranty Catalog

2 Burner Portable LP Gas Griddle with Lid and Folding Cart in Black Warranty Razor GGC2030M

841765102277 0841765102277 1006766771 d888e211 e461 4dd2 a297 cf6a5655501b images thdstatic catalog Images d8 |||

OWNER S MANUAL Outdoor Portable LP Gas Griddle WARNING FOR YOUR SAFETY: DO NOT LEAVE THIS APPLIANCE UNATTENDED WHILE IN USE, ESPECIALLY COOKING THE FATTY MEAT AND CLOSE THE LID TOO LONG TIME. Model No. **GGC2030M** WARNING FOR YOUR SAFETY: For Outdoor Use Only outside any enclosure DANGER If you ...

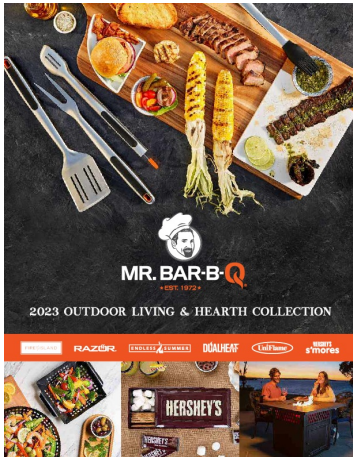
lang:en score:29 filesize: 3.54 M page_count: 14 document date: 2020-08-14



[\[pdf\]](#) Instructions Accessories Catalog

2023 OUTDOOR LIVING HEARTH COLLECTION 21 janv — holder is designed to fit most gas grill doors
 REQUIREMENTS The standard covers the construction mechanical details instructions MrBarBQ
 OutdoorLiving Catalog endlesssummerheat 01 |||

2023 OUTDOOR LIVING HEARTH COLLECTION 50 YEARS of Bringing Friends
 Family Together Established ... over 5 year warranty Custom designed to fit the Blue
 Rhino Razor Model# GGC2030L and Razor Model# **GGC2030M** 40.83 x 18.31 x
 33.94 Case pack: 4 HEAVY-DUTY GRIDDLE MAT 08810RZFD Non-slip, heat re...
 lang:en **score:19** filesize: 32.33 M page_count: 111 document date: 2023-01-12



[\[pdf\]](#) Accessories Catalog

Endless Summer 30 Outdoor LP Gas Fire Pit Table With Ceramic Tile Man USA Grills Direct in no time
 The unit features a black embossed steel base and ceramic tile design surrounded by trim Its easily
 accessible control panel even piezo electronic ignition for easy on off operation MrBarBQ OutdoorLiving
 Catalog 2023 v5 v 1714791018 cdn shopify s files 1 0813 8725 8148 |||

2023 OUTDOOR LIVING HEARTH COLLECTION 50 YEARS of Bringing Friends
 Family Together Established ... 6 Compatible with Razor griddle models: GBT1860L,
 GGT2160M, GGT2130M, GGT2130L, GGT2131M, GGT2131L, **GGC2030M**,
 GGC2030L, BGC2131B GRIDDLE RV ADAPTER HOSE 08842RZ Compatible with
 Razor griddle models ...

lang:en **score:9** filesize: 19.97 M page_count: 111 document date: 0000-00-00