

OEDRO FMQNV7H

OEDRO Running Boards Instruction Manual

Brand: OEDRO | Model: FMQNV7H

1. INTRODUCTION

This manual provides detailed instructions for the installation, operation, and maintenance of your OEDRO Armored Pedal Running Boards. Please read this manual thoroughly before installation and use to ensure proper fitment and safe operation. These running boards are designed to provide convenient entry and exit for your vehicle while offering side protection.

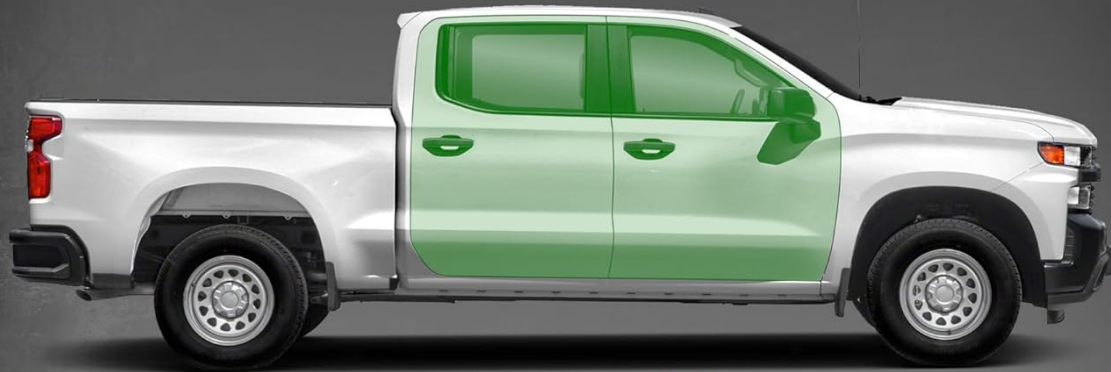
2. COMPATIBILITY

These running boards are compatible with the following vehicle models:

- 2019-2025 Chevy Silverado 1500 Crew Cab
- 2019-2025 GMC Sierra 1500 Crew Cab
- 2020-2025 Chevy Silverado 2500HD 3500HD Crew Cab
- 2020-2025 GMC Sierra 2500HD 3500HD Crew Cab

Note: Excludes 2019 1500 LD/Limited models. Please verify your vehicle's cab size to ensure proper fitment.

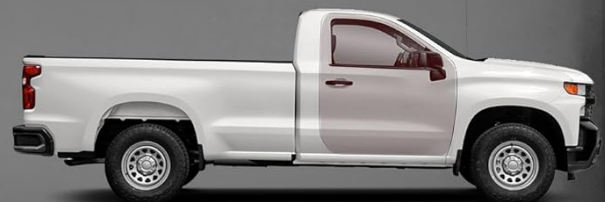
2019-2025 Silverado/Sierra 1500 Crew Cab; 2020-2025 Silverado/Sierra 2500HD 3500HD Crew Cab



Crew Cab



Double Cab



Standard Cab



OEDRO

Image 2.1: Visual guide for compatible Crew Cab models versus Double Cab and Standard Cab models.

3. PACKAGE CONTENTS

Please ensure all components are present before beginning installation:

- 2 x Running Boards
- Complete set of Mounting Brackets
- All necessary Hardware (bolts, washers, nuts)
- DIY Instruction Manual (this document)



Image 3.1: Overview of included running boards, mounting hardware, and instruction manual, along with product dimensions.

4. SETUP AND INSTALLATION

Installation is a bolt-on process and typically requires general garage tools. No drilling or cutting is required for most models. For models from 2017 and later, trimming may be needed on the plastic DEF tank cover.

4.1 Pre-Installation Steps

1. Unpack all components and verify against the package contents list.
2. Identify the mounting points on your vehicle's frame. These are typically pre-drilled holes covered by plastic plugs. Remove any plastic plugs from the mounting holes.
3. Familiarize yourself with the mounting brackets. Note that brackets are not pre-welded to the step bars.

4.2 Bracket Installation

1. Attach the appropriate mounting brackets to the vehicle's frame using the provided hardware. Ensure the bolts are finger-tight only at this stage to allow for adjustment.
2. Repeat for all mounting points on both the driver and passenger sides.

4.3 Running Board Attachment

1. Carefully position the running board onto the installed brackets.
2. Secure the running board to the brackets using the remaining hardware. Again, keep bolts finger-tight.

4.4 Final Adjustment and Tightening

1. Adjust the running boards to your desired position, ensuring they are level and properly aligned with the vehicle.
2. Once satisfied with the alignment, fully tighten all bolts on the brackets and running boards. Do not overtighten.

4.5 Installation Videos

For a visual guide, please refer to the following installation videos:

Video 4.1: Detailed installation guide for OEDRO Running Boards, covering all steps from unpacking to final tightening. (Duration: 22:09)

Video 4.2: Installation overview for OEDRO side steps on 2019-2024 Silverado 1500 Crew Cab. (Duration: 0:56)

Video 4.3: Quick guide for installing oEdRo 6.5" Textured Black Side Steps. (Duration: 0:46)

Video 4.4: Installation process for OEDRO Running Boards with High-Low Step design. (Duration: 1:52)

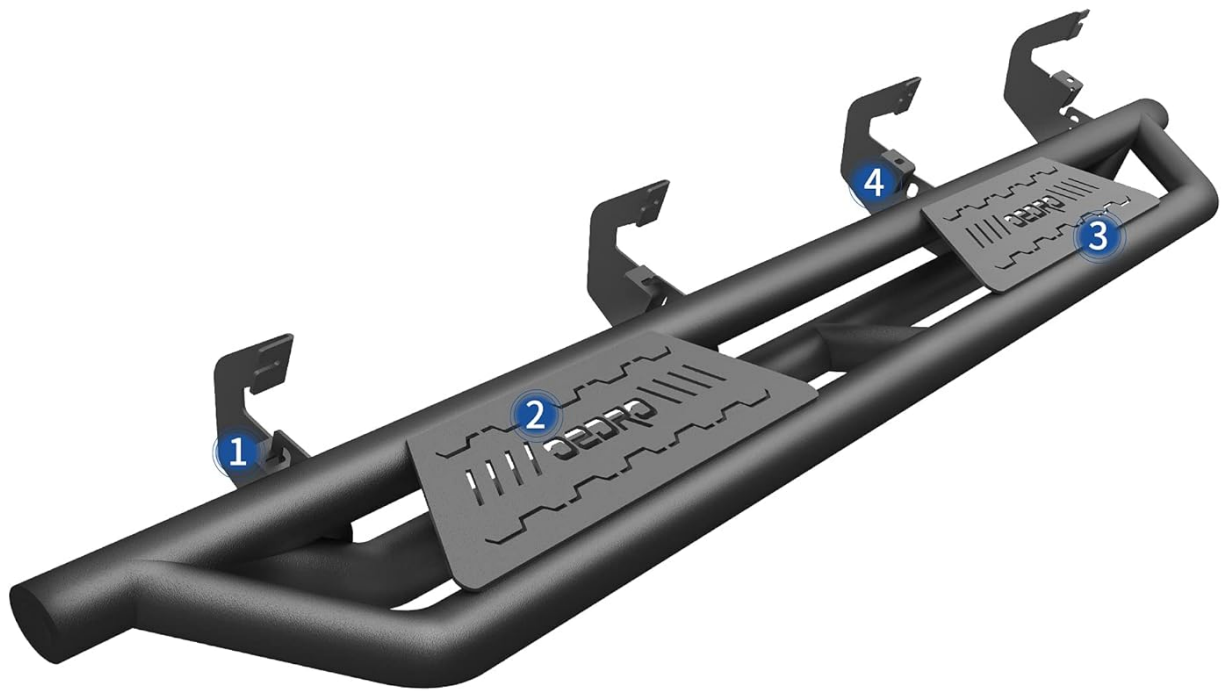
5. OPERATING INSTRUCTIONS

To use the running boards, simply step onto the textured surface when entering or exiting your vehicle. The wide step area and slip-proof design provide a secure footing.

HOLDS UP TO 550 LBS



Image 5.1: Demonstrates the ample step area for secure footing when entering or exiting the vehicle.

**Slip-Proof:**

Texture Black Finish with E-Coating

1**Easy Bolt-On Installation:**

No Drilling Required

2**Comfortable:**

Crafted with Laser-Cutting Technology

3**350 LBS Load Capacity:**

Heavy Duty Tubes

4

OEDRO DISTINCT DESIGN RUNNING BOARDS

OEDRO

Image 5.2: Illustrates the robust 550 lbs weight capacity of the running boards.

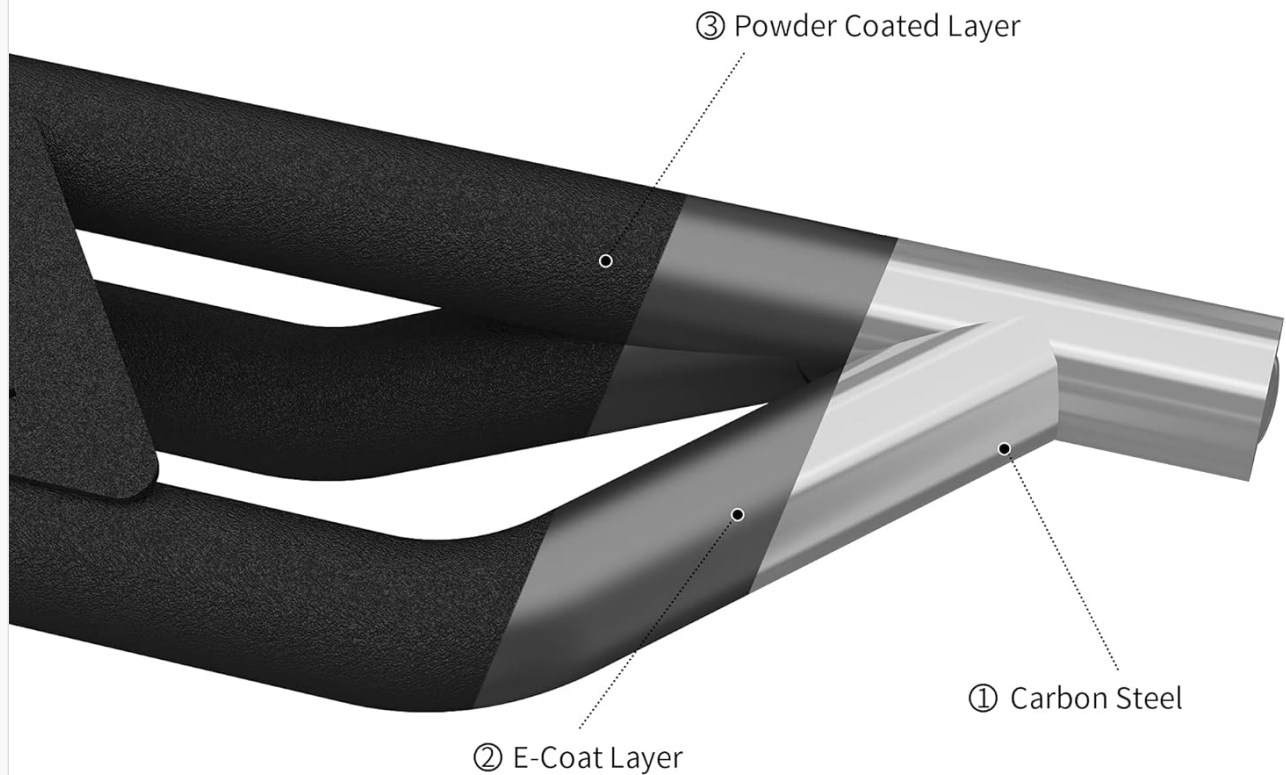
6. MAINTENANCE

To maintain the appearance and longevity of your OEDRO running boards:

- Regularly clean the running boards with mild soap and water to remove dirt, mud, and road salt.
- Inspect all mounting hardware periodically for tightness. Retighten if necessary.
- The durable powder coating provides protection against rust and corrosion. Avoid using harsh chemicals or abrasive cleaners that could damage the finish.

Rust Resistance

Unique powder coating provides rust and corrosion resistance



OEDRO DISTINCT
DESIGNRUNNING BOARDS

OEDRO

Image 6.1: Highlights key features such as the slip-proof texture black finish with E-coating and heavy-duty tubes for load capacity.



Image 6.2: Cross-section view illustrating the carbon steel base, E-coat layer, and powder coated layer for rust resistance.

7. TROUBLESHOOTING

- **Loose Fit:** If the running boards feel loose, check all mounting bolts and ensure they are securely tightened. Over time, vibrations can cause bolts to loosen.
- **Unusual Noise:** Rattling or squeaking noises may indicate loose hardware or improper installation. Re-inspect all connection points and tighten as needed.
- **Surface Wear/Rust:** While designed for rust resistance, extreme conditions or damage to the coating can lead to wear. Clean the affected area and apply a rust-inhibiting paint if necessary.

8. SPECIFICATIONS

Feature	Detail
Brand	OEDRO

Feature	Detail
Model Name	FMQNV7H
Material	Alloy Steel
Exterior Finish	Black Powder Coated
Color	Black
Item Weight	67.02 Pounds
Weight Limit	550 Pounds
Item Dimensions (LxWxH)	15.35 x 15.35 x 5.51 inches
Size	7 inches
UPC	840265271650

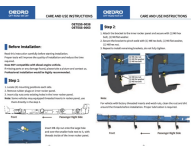

9. WARRANTY


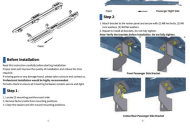
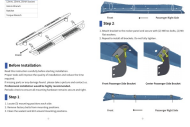

This product comes with a 1-year manufacturer's warranty. For warranty claims or further inquiries, please refer to the customer support information.

10. CUSTOMER SUPPORT

Should any inquiries arise regarding your OEDRO Running Boards, please feel free to contact us directly through the retailer's customer service channels. We are committed to providing assistance and ensuring your satisfaction.

Related Documents - FMQNV7H

	<p>OEDRO OETESS-0038/0063 Running Boards Installation Guide for Silverado/Sierra</p> <p>Comprehensive installation and care instructions for OEDRO OETESS-0038 and OETESS-0063 6.5" running boards, compatible with 2007-2019 Chevrolet Silverado and GMC Sierra models. Includes part list, step-by-step assembly, and important notes.</p>
	<p>OEDRO Underseat Storage Box Installation Guide</p> <p>Step-by-step instructions for installing the OEDRO underseat storage box in compatible Chevrolet Silverado and GMC Sierra Double Cab trucks.</p>

	<p>OEDRO Under Seat Storage Box Installation Guide for Chevy Silverado & GMC Sierra</p> <p>Learn how to install your OEDRO 2-in-1 Under Seat Storage Box in your Chevy Silverado or GMC Sierra Crew Cab with this easy-to-follow installation guide.</p>
	<p>OEDRO 6" Running Boards Installation Guide for Toyota Tacoma (2005-2023)</p> <p>This guide provides step-by-step instructions for installing OEDRO 6" Dual Convex Nerf Bars running boards on 2005-2023 Toyota Tacoma Double Cab and Crew Cab models. It includes a comprehensive parts list and important pre-installation notes.</p>
	<p>OEDRO Running Boards Installation Guide for 2007-2021 Toyota Tundra Double Cab</p> <p>Step-by-step installation instructions for OEDRO running boards (side steps) designed for the 2007-2021 Toyota Tundra Double Cab. Includes tools required, parts list, and detailed assembly steps.</p>
	<p>OEDRO Hard Tri-Fold Tonneau Cover Assembly & Installation Guide</p> <p>Comprehensive assembly and installation guide for OEDRO Hard Tri-Fold Tonneau Covers. Learn how to install your truck bed cover with step-by-step instructions, parts inventory, and important tips. Compatible with various truck models including Toyota Tacoma, Ford F-150, Dodge Ram, Chevy Silverado, and GMC Sierra.</p>