

## CLY FLB060

# CLY 60W 5200LM LED Floodlight with Motion Detector User Manual

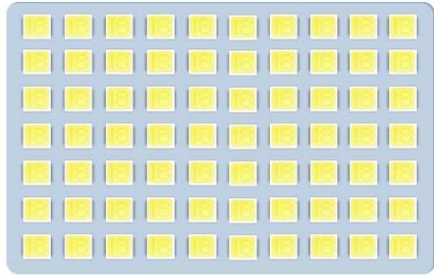
MODEL: FLB060

## 1. PRODUCT OVERVIEW

The CLY 60W 5200LM LED Floodlight with Motion Detector is a high-performance outdoor lighting solution designed for enhanced security and illumination. Featuring a powerful 60W LED light source providing 5200 lumens of cold white light (6500K), it is ideal for various outdoor applications such as patios, gardens, garages, and entryways. The integrated motion sensor offers customizable lighting time and sensitivity settings, ensuring efficient and responsive illumination.



Image: The CLY 60W 5200LM LED Floodlight with Motion Detector, showcasing its compact design and included mounting hardware.

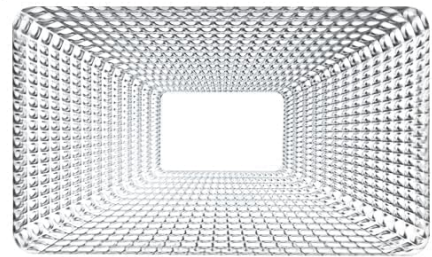


60W  
5200 Lumen  
Lifespan >50,000h

Lighting angle: 120°



Cold White: 6500K



Aluminum reflector

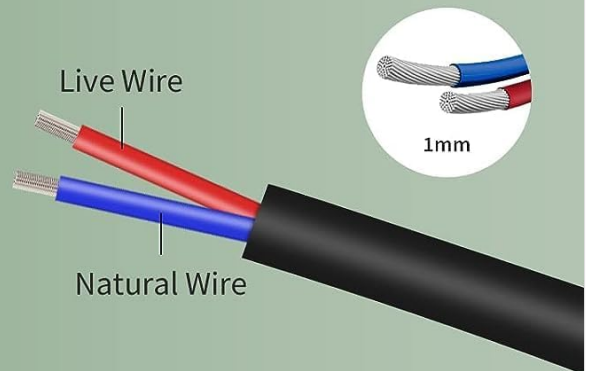
Image: Visual representation of the floodlight's technical features, including 60W power, 5200 lumens, over 50,000 hours lifespan, 6500K cold white color temperature, 120-degree lighting angle, and aluminum reflector.



# Excellent Heat Dissipation

Plastic-Clad Aluminum more Insulated and Safe

## 1M Cable



## Nano Material

Nanomaterials are stronger, more transparent, and brighter

Image: Details on the floodlight's excellent heat dissipation, 1-meter cable length (compared to 0.8m for others), and durable nano material construction.

## 2. SAFETY INSTRUCTIONS

Please read these instructions carefully before installation and use. Failure to follow these instructions may result in electric shock, fire, or other hazards.

- Ensure the power supply is disconnected before installation or maintenance.
- Installation should be performed by a qualified electrician in accordance with local wiring regulations.
- Do not connect the product to a dimmer switch.
- This product is designed for outdoor use and has an IP66 waterproof rating. However, avoid submerging it in water.
- Do not look directly into the LED light source when it is on, as it may cause eye strain.
- Keep children away from the product during installation and operation.
- Ensure the mounting surface is stable and can support the weight of the floodlight.

### 3. PACKAGE CONTENTS

Please check the package contents upon receipt to ensure all items are present and undamaged:

- 1 x CLY 60W LED Floodlight with Motion Detector
- Mounting Screws
- Wall Plugs

### 4. SETUP AND INSTALLATION

#### 4.1 Mounting the Projector

Follow these steps for secure installation:

1. Choose a suitable mounting location. The ideal mounting height is between 6 to 8 meters (19.69ft-26.25ft) for optimal detection range.
2. Mark the drilling points on the wall using the floodlight's bracket as a template.
3. Drill holes at the marked points. Insert the wall plugs into the drilled holes.
4. Secure the floodlight bracket to the wall using the provided screws.
5. Adjust the angle of the floodlight and the motion sensor as needed. The bracket allows for 180-degree adjustment, and the motion sensor can rotate 360 degrees horizontally and 180 degrees vertically.





The Minimum is closed after 10s



The Maximum is closed after 600s



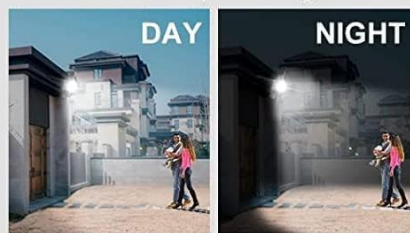
MOON

Only work at night



SUN

Work day and night



Detection Distance: 0-12M

### Lighting Time Setting

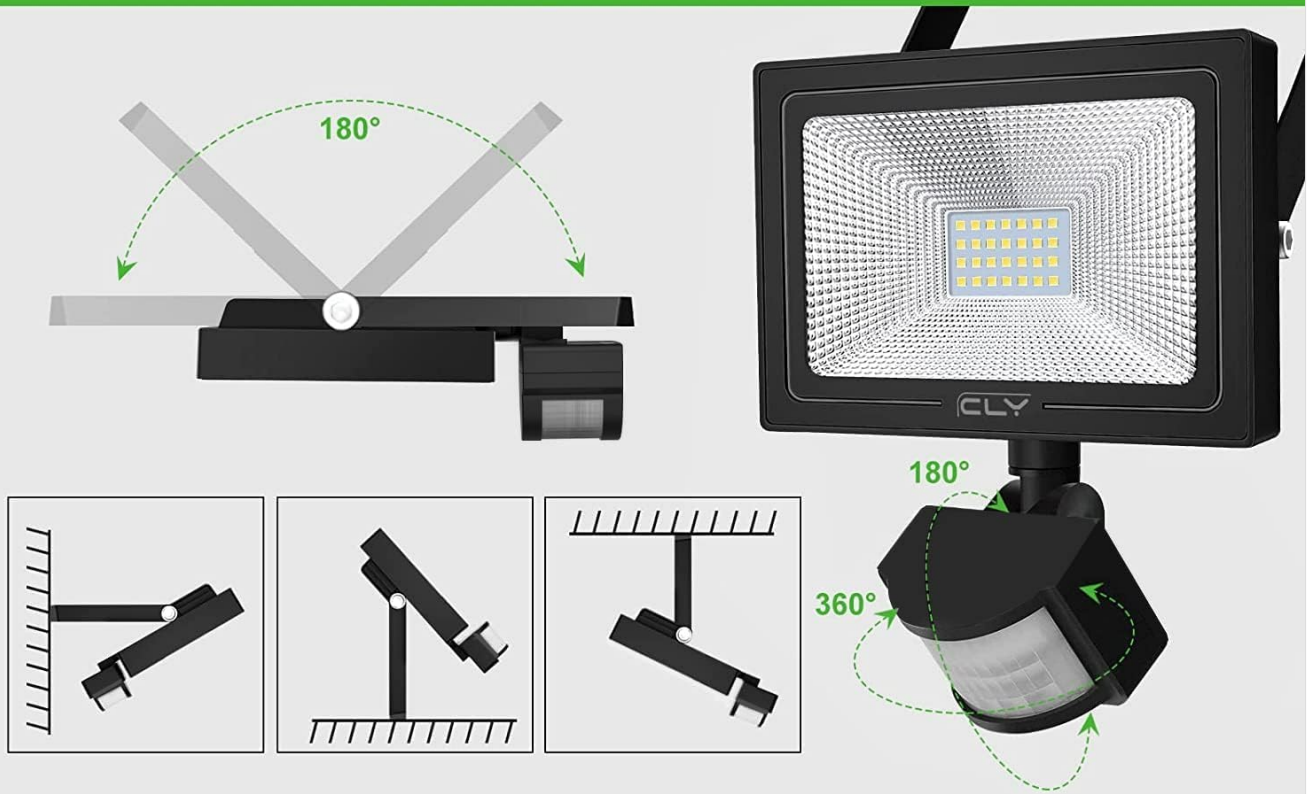
Setting lighting duration  
10s-45s-120s-600s

### Sensitivity Setting

Only Night or 24H

Image: Step-by-step visual guide for installing the floodlight, including drilling, inserting plugs, and securing the bracket.

## Ajustable Bracket and Motion Sensor



## Installation steps

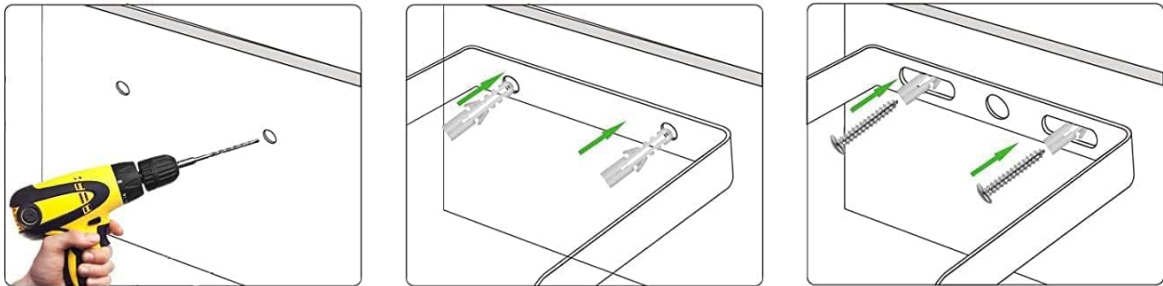


Image: Illustration of the adjustable bracket and motion sensor, showing their range of motion for precise positioning.

### 4.2 Wiring Instructions

Connect the floodlight to your main power supply. The cable has three wires: Live Wire (brown), Neutral Wire (blue), and Ground Wire (yellow/green). Ensure correct polarity and a secure ground connection. If unsure, consult a qualified electrician.

## 5. OPERATING INSTRUCTIONS

### 5.1 Motion Sensor Settings

The motion sensor has two adjustable knobs:

- **L (Lighting Time Setting):** Controls how long the light stays on after motion is detected. Settings include 10s, 45s, 120s, and 600s.
- **M (Sensitivity Setting):** Determines the ambient light level at which the sensor becomes active.
  - **Moon Symbol:** The sensor will only activate the light at night (when it's dark).

- **Sun Symbol:** The sensor will activate the light both during the day and at night.



**Lighting time setting:**  
10s/45s/120s/600s

**Turn on Induction setting:**

Sensing just at night/  
Sensing at the day&night



Image: Close-up view of the motion sensor's adjustable knobs for lighting time (L) and sensitivity (M), illustrating the different settings.



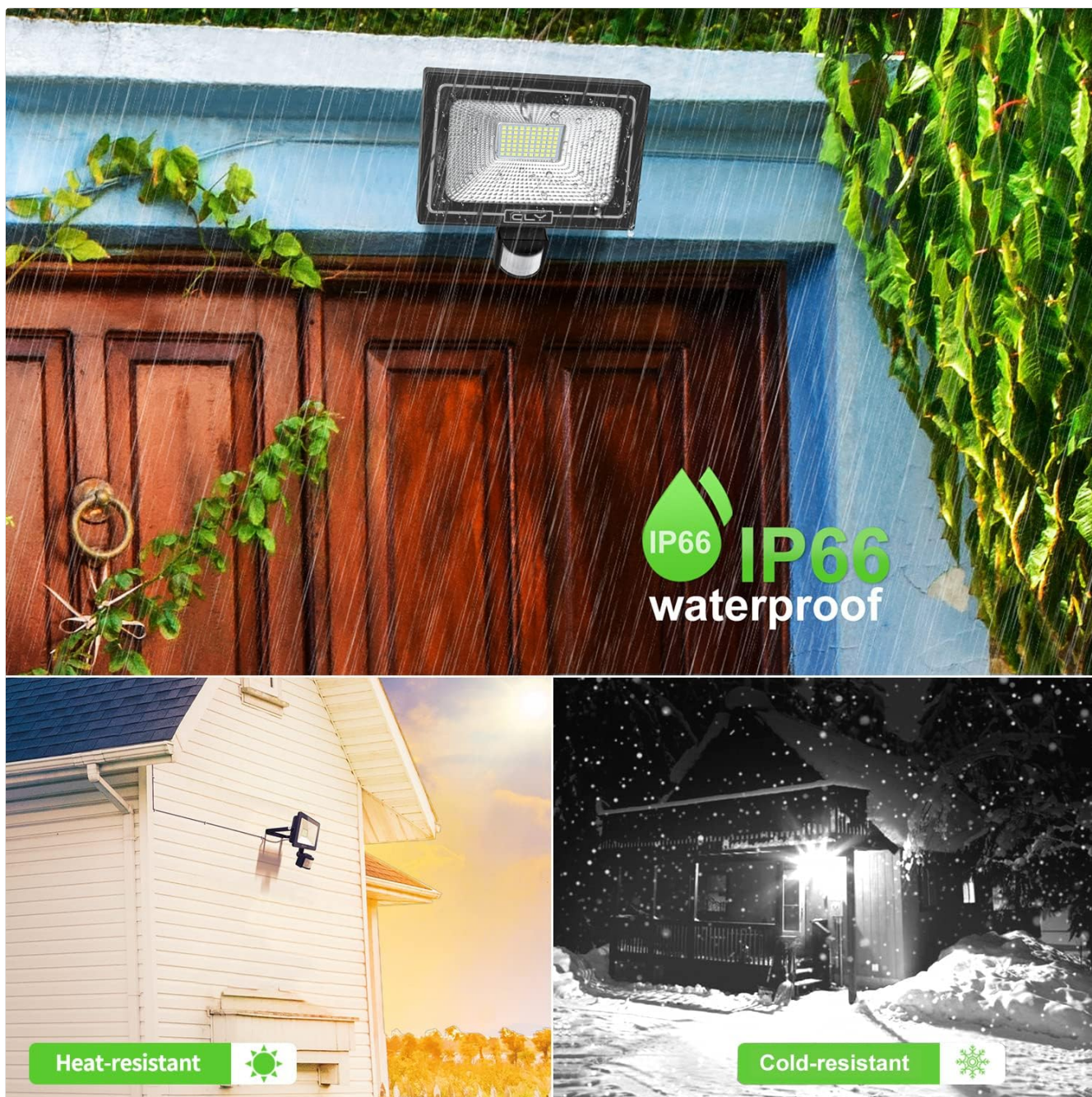


Image: Diagram showing the 180-degree sensing angle and a maximum detection range of 12 meters (39 feet) for the motion sensor, along with ideal mounting height and optimum light range.

## 6. MAINTENANCE

To ensure the longevity and optimal performance of your CLY LED Floodlight, follow these maintenance guidelines:

- **Cleaning:** Periodically clean the surface of the floodlight and the motion sensor lens with a soft, damp cloth. Do not use abrasive cleaners or solvents.
- **Inspection:** Regularly check the wiring and mounting for any signs of wear, damage, or loosening.
- **Durability:** The floodlight is IP66 waterproof, making it resistant to dust and strong jets of water. It is also designed to be heat-resistant and cold-resistant, suitable for various weather conditions.



Image: Visual confirmation of the floodlight's IP66 waterproof rating and its ability to withstand various weather conditions, including rain, heat, and cold.

## 7. TROUBLESHOOTING

If you encounter issues with your floodlight, refer to the following common problems and solutions:

- **Light does not turn on:**
  - Check the power connection and ensure the circuit breaker is on.
  - Verify the motion sensor's 'M' (Sensitivity) setting. If set to 'Moon', it will only activate in darkness.
  - Ensure there is no obstruction blocking the motion sensor.
- **Light stays on continuously:**
  - Check the 'L' (Lighting Time) setting; it might be set to a long duration.
  - Ensure the motion sensor is not continuously detecting movement (e.g., from swaying trees, passing traffic). Adjust the sensor's angle or sensitivity.
  - If the 'M' (Sensitivity) setting is on 'Sun' and there is constant ambient light, the sensor might be overridden.
- **Motion sensor not detecting:**

- Ensure the sensor is clean and free from dirt or debris.
- Check the 'M' (Sensitivity) setting; it might be set too low or to 'Moon' during daylight.
- Verify the detection range and angle are appropriate for the area you wish to cover.

## 8. SPECIFICATIONS

Feature	Specification
Brand	CLY
Model Number	FLB060
Dimensions (L x W x H)	18.2 x 3.5 x 19 cm (7.2 x 1.4 x 7.5 inches)
Weight	120 g
Power	60 Watts
Voltage	230 Volts
Material	Aluminum
Light Source Type	LED
Luminous Flux	5200 Lumens
Color Temperature	Cold White (6500K)
Beam Angle	120 Degrees
Control Method	Tactile (Sensor)
Usage	Outdoor
IP Rating	IP66 (Waterproof)

For detailed energy information, please refer to the official EPREL database[EPREL Product Information](#)



Image: Energy efficiency label for the product.

## 9. WARRANTY AND SUPPORT

CLY offers a **2-year replacement service** for this product. If you encounter any issues or require support, please contact us through Amazon or via the service email address provided in your product packaging. Our team aims to respond within 24 hours to assist you.