

STANLEY SXWT-CPT-20

STANLEY SXWT-CPT-20 Hand Pallet Truck: User Manual

Model: SXWT-CPT-20

1. INTRODUCTION

This user manual provides essential information for the safe and efficient operation, maintenance, and troubleshooting of your STANLEY SXWT-CPT-20 Hand Pallet Truck. Please read this manual thoroughly before using the equipment to ensure proper handling and to prevent injury or damage.

The STANLEY SXWT-CPT-20 is a robust hydraulic hand pallet truck designed for material handling in industrial and commercial environments, featuring a 2000kg load capacity and durable construction.

2. SAFETY INFORMATION

WARNING: Failure to follow these safety instructions may result in serious injury or death.

- Always operate the pallet truck on level, stable surfaces.
- Do not exceed the maximum load capacity of 2000kg.
- Ensure the load is centered and stable on the forks before lifting or moving.
- Keep hands and feet clear of moving parts, especially the wheels and forks.
- Wear appropriate personal protective equipment (PPE) such as safety shoes and gloves.
- Do not use the pallet truck to transport people.
- Inspect the pallet truck for damage or malfunctions before each use. Do not operate if damaged.
- Be aware of your surroundings and maintain a clear path of travel.
- Lower forks completely when the pallet truck is not in use.

3. PRODUCT OVERVIEW

The STANLEY SXWT-CPT-20 Hand Pallet Truck is engineered for durability and ease of use, featuring a robust steel frame and a reliable hydraulic system.

Key Features:

- **2000kg Load Capacity:** Designed for heavy-duty material transport.
- **Stable Hydraulic System:** Equipped with an overload pressure valve for safety and durability.
- **3-Position Lever:** Allows for easy control of lowering, raising, and holding loads.
- **Noise-Free Rollers:** PU steering wheels and tandem/bogie rollers ensure smooth and quiet operation.
- **Heart-Shaped Steel Handle:** Ergonomically designed for comfortable and efficient pumping.

Components:



Figure 3.1: Full view of the STANLEY SXWT-CPT-20 Hand Pallet Truck, showing the handle, hydraulic pump, forks, and wheels.

The pallet truck consists of a sturdy steel frame, two forks for engaging pallets, a hydraulic pump system, a steering handle, and a combination of steering and tandem rollers.



Figure 3.2: Detail of the tandem rollers (bogie wheels) located under the forks, designed for smooth movement over uneven surfaces and reduced wear.

The tandem rollers, also known as bogie wheels, are positioned under the forks to distribute weight and facilitate easier movement over thresholds and uneven floor surfaces.



Figure 3.3: View of the PU steering wheel and the hydraulic pump mechanism, which is activated by the handle.

The steering wheel, made of durable PU material, provides maneuverability, while the integrated hydraulic pump allows for effortless lifting of heavy loads.

4. SETUP

The STANLEY SXWT-CPT-20 Hand Pallet Truck typically arrives largely pre-assembled. Follow these steps for initial setup and inspection:

1. **Unpacking:** Carefully remove the pallet truck from its packaging. Retain packaging materials for future transport or storage if needed.
2. **Handle Assembly (if required):** If the handle is not already attached, follow the manufacturer's specific instructions for securing it to the hydraulic pump mechanism. Ensure all bolts are tightened securely.
3. **Initial Inspection:**
 - Check for any visible damage from shipping.
 - Verify that all wheels (steering and tandem) rotate freely.
 - Test the 3-position lever on the handle to ensure it moves smoothly between "Lower," "Neutral," and "Raise" positions.
 - Pump the handle a few times to check the hydraulic lift function.
4. **Hydraulic Fluid Level Check:** While typically factory-filled, consult the hydraulic pump's specific instructions for checking and topping up fluid if necessary.

5. OPERATING INSTRUCTIONS

Operating the STANLEY SXWT-CPT-20 involves using the handle's 3-position lever to control the forks and manually moving the truck.

5.1. Understanding the 3-Position Lever



Figure 5.1: Illustration of the 3-way functional lever and key features of the hydraulic system, including the turning radius and fork maximum height.

- **Raise Position:** Pull the lever fully upwards. Pumping the handle will raise the forks.
- **Neutral Position:** Place the lever in the middle position. This disengages the hydraulic pump, allowing the pallet truck to be moved freely without lifting or lowering.
- **Lower Position:** Push the lever fully downwards. This will slowly lower the forks. Release the lever to stop lowering.

5.2. Lifting a Load

1. Ensure the forks are fully lowered by pushing the lever to the "Lower" position.
2. Carefully position the pallet truck so that the forks are aligned with the pallet openings.
3. Push the pallet truck forward until the forks are fully inserted under the pallet.
4. Move the 3-position lever to the "Raise" position.
5. Pump the handle repeatedly until the pallet is lifted clear of the ground. Do not over-pump.

5.3. Moving a Load

1. Once the load is lifted, ensure the 3-position lever is in the "Neutral" position. This allows for easy steering and movement.
2. Push or pull the pallet truck using the handle. Maintain a clear line of sight and be aware of obstacles.
3. Move at a controlled speed, especially when turning or on inclines/declines.

5.4. Lowering a Load

1. Position the pallet and load precisely where it needs to be placed.
2. Push the 3-position lever to the "Lower" position. The forks will descend.
3. Once the pallet is fully on the ground, pull the pallet truck away from the pallet.

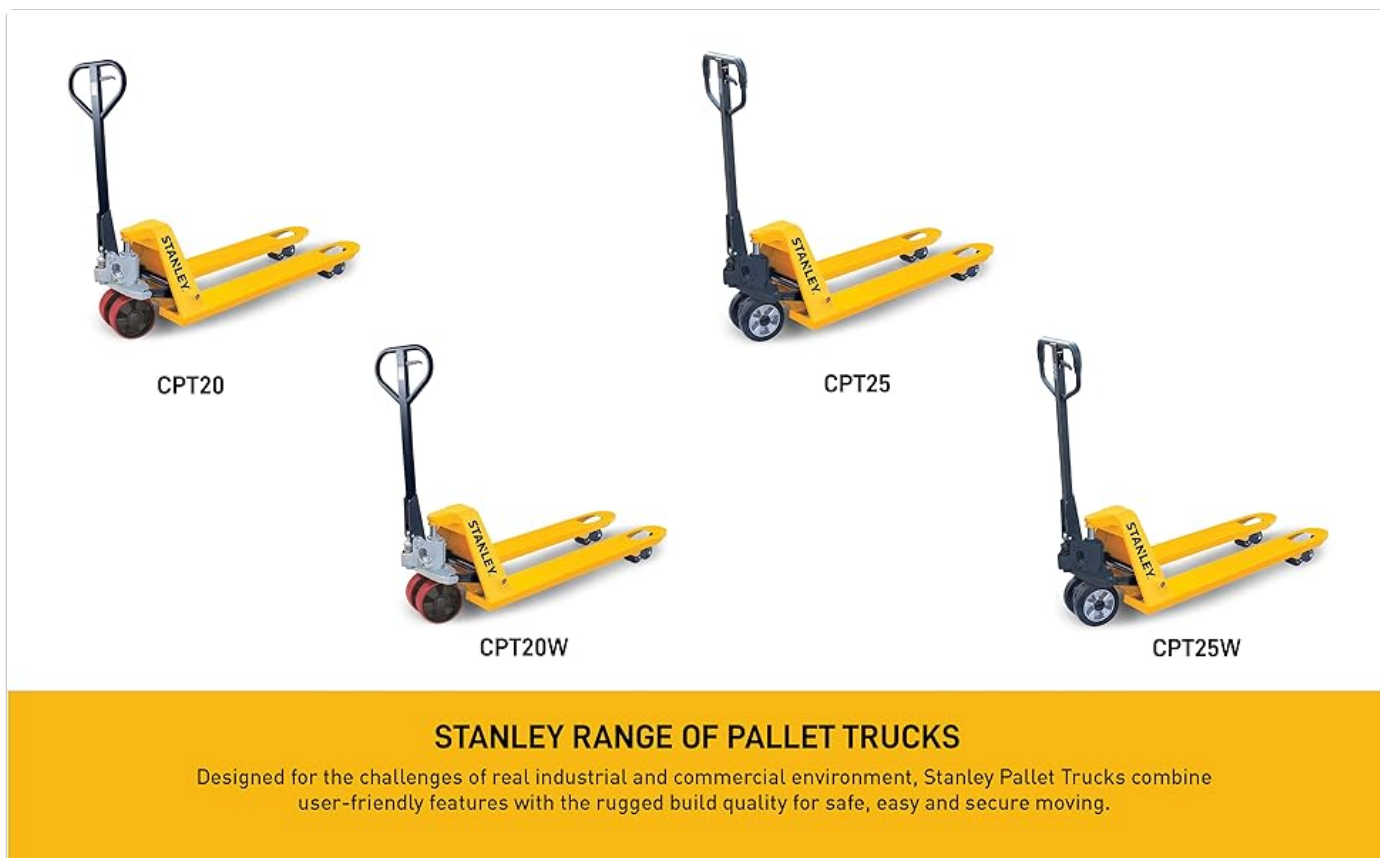


Figure 5.2: The STANLEY SXWT-CPT-20 Hand Pallet Truck being used to move goods in a warehouse environment.

Always ensure the load is stable and within the truck's capacity. The hydraulic system includes an overload pressure valve that will automatically release pressure if the load exceeds the maximum capacity, preventing damage to the unit.

6. MAINTENANCE

Regular maintenance ensures the longevity and safe operation of your STANLEY SXWT-CPT-20 Hand Pallet Truck.

- **Daily Inspection:** Before each use, visually inspect the pallet truck for any signs of wear, damage, or leaks. Check the condition of the wheels and forks.
- **Lubrication:** Periodically lubricate all moving parts, including wheel bearings, pivot points, and the handle mechanism, with appropriate grease or oil.
- **Hydraulic System:**
 - Check the hydraulic fluid level regularly. Refer to the hydraulic pump's specific instructions for the correct fluid type and filling procedure.
 - Inspect for any hydraulic fluid leaks. Address leaks immediately.
 - If the lifting mechanism becomes sluggish, it may indicate low fluid or air in the system, requiring bleeding.
- **Cleaning:** Keep the pallet truck clean, especially the wheels and hydraulic components, to prevent dirt and debris from affecting performance.
- **Storage:** Store the pallet truck in a dry, protected area with the forks fully lowered to prevent strain on the hydraulic system.

7. TROUBLESHOOTING

This section addresses common issues you might encounter with your pallet truck.

Problem	Possible Cause	Solution
---------	----------------	----------

Problem	Possible Cause	Solution
Forks do not lift or lift slowly.	Low hydraulic fluid level, air in the hydraulic system, overload, or faulty release valve.	Check hydraulic fluid level and refill if necessary. Bleed air from the system (refer to hydraulic pump instructions). Reduce load. Inspect and repair/replace release valve.
Forks lower automatically or too quickly.	Release valve not fully closed, internal hydraulic leak, or worn seals.	Ensure release lever is in "Raise" position. Check for external leaks. Contact service for seal replacement.
Difficulty moving or steering.	Damaged wheels, debris in wheels, uneven load, or rough floor surface.	Inspect wheels for damage and clear debris. Ensure load is centered. Operate on smooth surfaces.
Handle does not pump smoothly.	Lack of lubrication, bent handle, or issue with pump mechanism.	Lubricate pivot points. Inspect handle for damage. Contact service if pump mechanism is faulty.

For issues not covered here or if problems persist, please contact STANLEY customer support.

8. SPECIFICATIONS

Technical specifications for the STANLEY SXWT-CPT-20 Hand Pallet Truck:

Feature	Detail
Model Number	SXWT-CPT-20
Brand	STANLEY
Load Capacity	2000 kg
Item Weight	58 kg
Material	Alloy Steel
Color	Yellow
Dimensions (L x W x H)	115 cm x 55 cm x 17 cm (approximate, based on product image)
Load Height (Max)	19 cm (7.48")
Steering Wheel Material	PU (Polyurethane)
Roller Type	Tandem/Bogie Rollers (PU Caster Wheel)
Handle Type	Heart Shaped Steel Handle with 3-position lever
Hydraulic System	Equipped with overload pressure valve

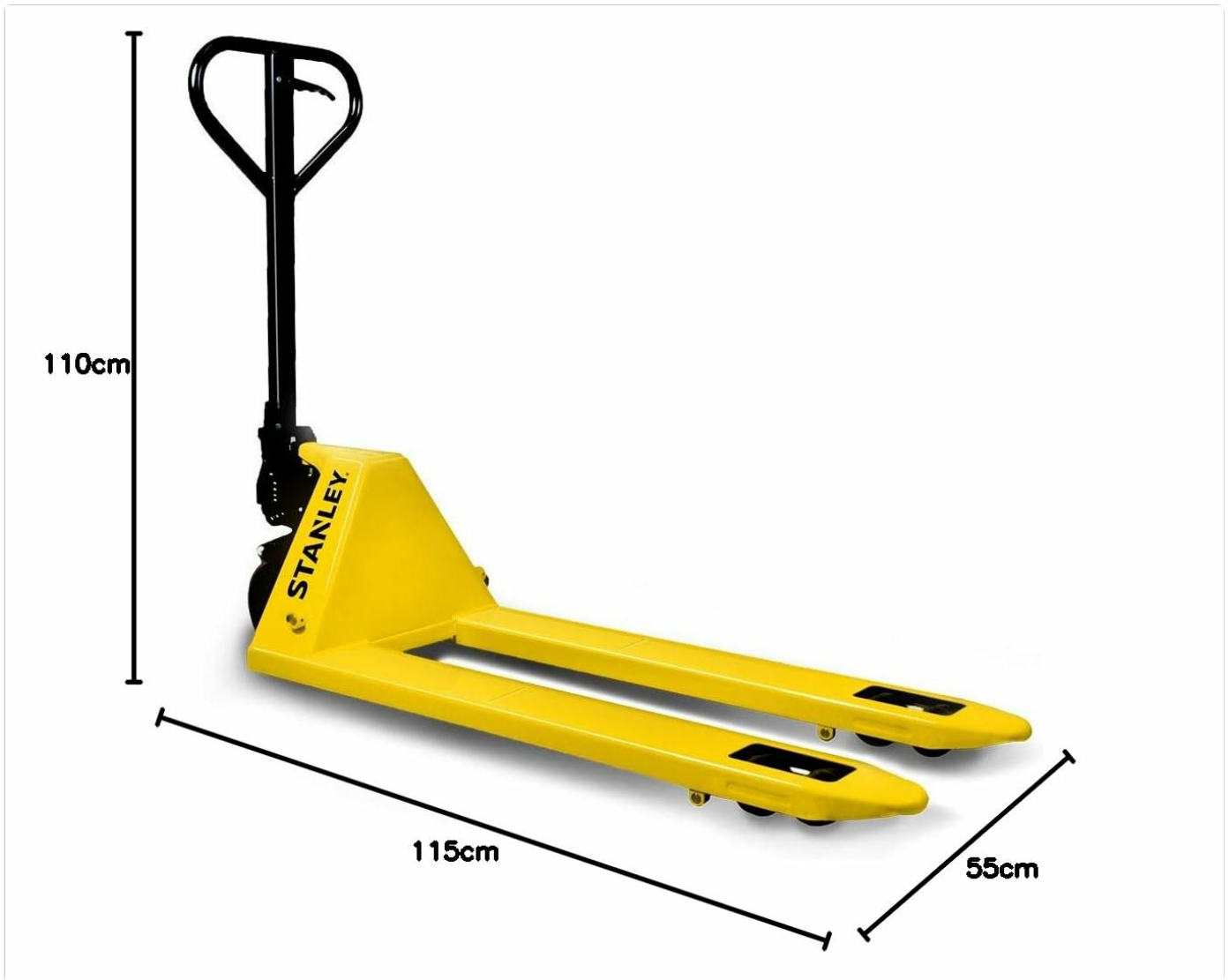


Figure 8.1: Key dimensions of the STANLEY SXWT-CPT-20 Hand Pallet Truck.

9. WARRANTY & SUPPORT

For warranty information, service, or technical support regarding your STANLEY SXWT-CPT-20 Hand Pallet Truck, please contact the manufacturer or authorized service center.

- **Manufacturer:** Stanley Black & Decker India Pvt Limited
- **Contact Number:** 1800-203-0644
- **Importer Contact:** Stanley Black & Decker India Private Ltd #28, Akemps, 3rd Main, 1st Cross, Ashwini Layout Koramangala Bangalore - 560131
- Please retain your proof of purchase for warranty claims.