

## ASGYISA Y-102

# ASGYISA Semi Flush Mount Modern Ceiling Light Fixture Instruction Manual

Model: Y-102 | Brand: ASGYISA

## PRODUCT OVERVIEW

The ASGYISA Semi Flush Mount Modern Ceiling Light Fixture is designed to provide stylish and effective lighting for various indoor spaces. Featuring a matte black finish and a unique Sputnik-inspired design, this 6-light chandelier is suitable for modern and retro home aesthetics. It uses E26 bulb bases (bulbs not included) and supports up to 60 watts per bulb, offering ample illumination for kitchens, dining rooms, foyers, corridors, bedrooms, study rooms, and farmhouses.



Figure 1: ASGYISA 6-Light Semi Flush Mount Ceiling Light Fixture.



Figure 2: The light fixture installed in a kitchen setting, showcasing its modern aesthetic.

## SAFETY INFORMATION

---

**WARNING:** To avoid the risk of electrical shock, always turn off the power at the main circuit breaker or fuse box before beginning any installation, maintenance, or bulb replacement procedures. Ensure all wiring is done in accordance with national and local electrical codes.

- Always use bulbs that comply with the specified wattage (up to 60 watts per bulb) and base type (E26).
- Do not connect the fixture to an ungrounded electrical system.
- If you are unsure about the installation process, consult a qualified electrician.
- Keep the fixture away from water and moisture. This product is for indoor use only.

## PACKAGE CONTENTS

---

Before beginning assembly, ensure all parts listed below are present and undamaged. If any part is missing or broken, do not attempt to assemble or install the product. Contact customer support for assistance.

- Mounting Plate
- Ceiling Canopy
- Fixture Arms (6 pieces)
- Wire Nuts
- Mounting Screws
- Instruction Manual

## SPECIFICATIONS

---

| Feature                 | Detail   |
|-------------------------|--|
| Brand                   | ASGYISA  |
| Model Number            | Y-102  |
| Color                   | Matte Black  |
| Material                | Metal  |
| Style                   | Modern, Retro, Classic, Contemporary               |
| Installation Type       | Semi Flush Mount                                   |
| Product Dimensions      | 16.53"L x 16.53"W x 6.29"H                         |
| Bulb Base               | E26 (Bulbs Not Included)                           |
| Max Wattage per Bulb    | 60 watts   |
| Number of Light Sources | 6  |
| Voltage                 | 130 Volts  |
| Special Feature         | Dimmable (with compatible bulbs and dimmer switch) |
| Item Weight             | 2.86 pounds  |

# DETAILED PARAMETERS

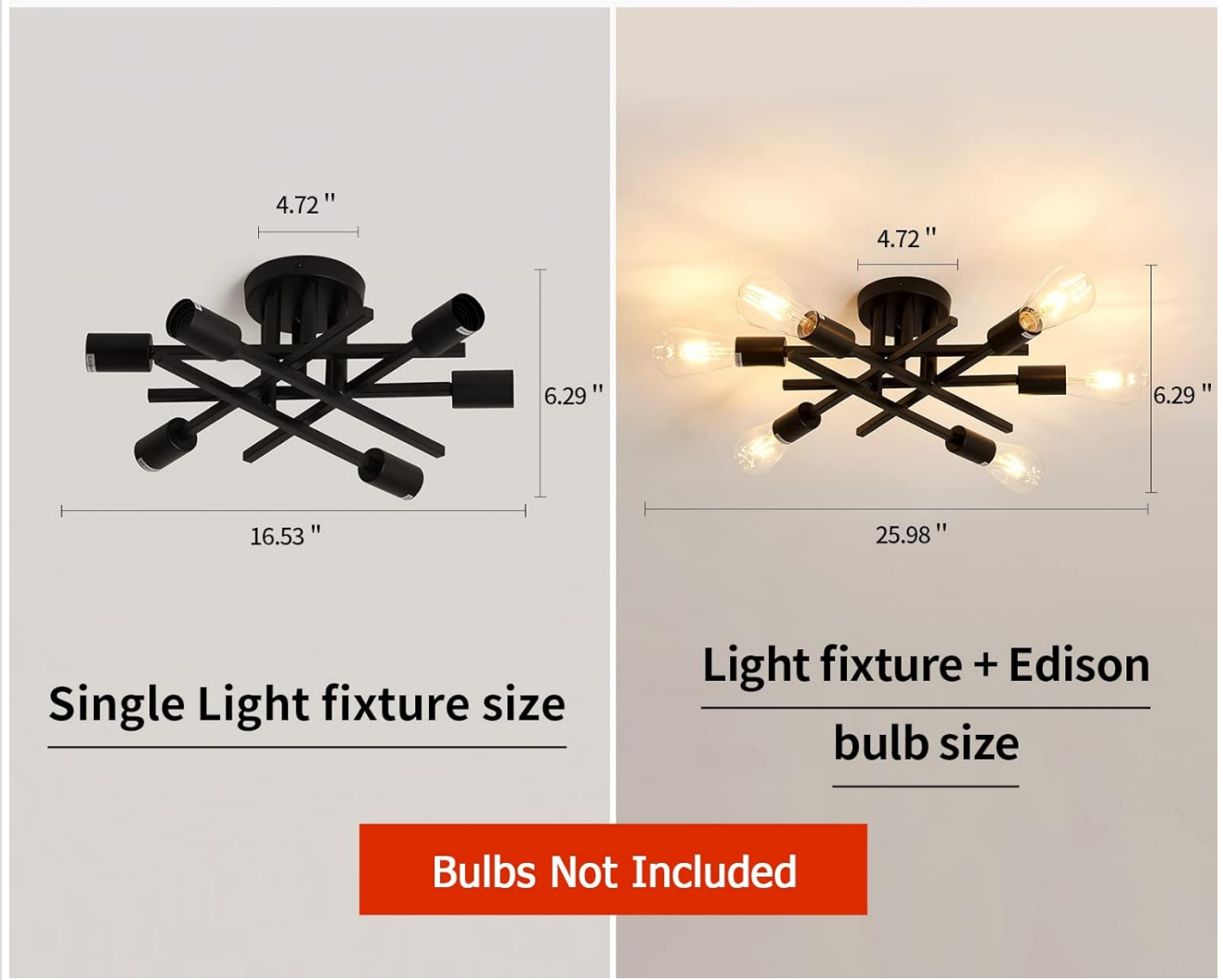


Figure 3: Detailed parameters and dimensions of the light fixture.

## SETUP AND INSTALLATION

Follow these steps carefully to install your ASGYISA ceiling light fixture. It is recommended to have two people for installation, especially during wiring.

1. **Prepare for Installation:** Turn off power at the circuit breaker. Ensure all package contents are present.
2. **Assemble Fixture Arms:**
  - a. Install the first two fixture arms (poles) by screwing them into the main body, ensuring 3.4 inches are exposed.
  - b. Install the next two fixture arms, ensuring 3.9 inches are exposed.
  - c. Install the final two fixture arms, ensuring 4.8 inches are exposed.



# EASY INSTALLATION

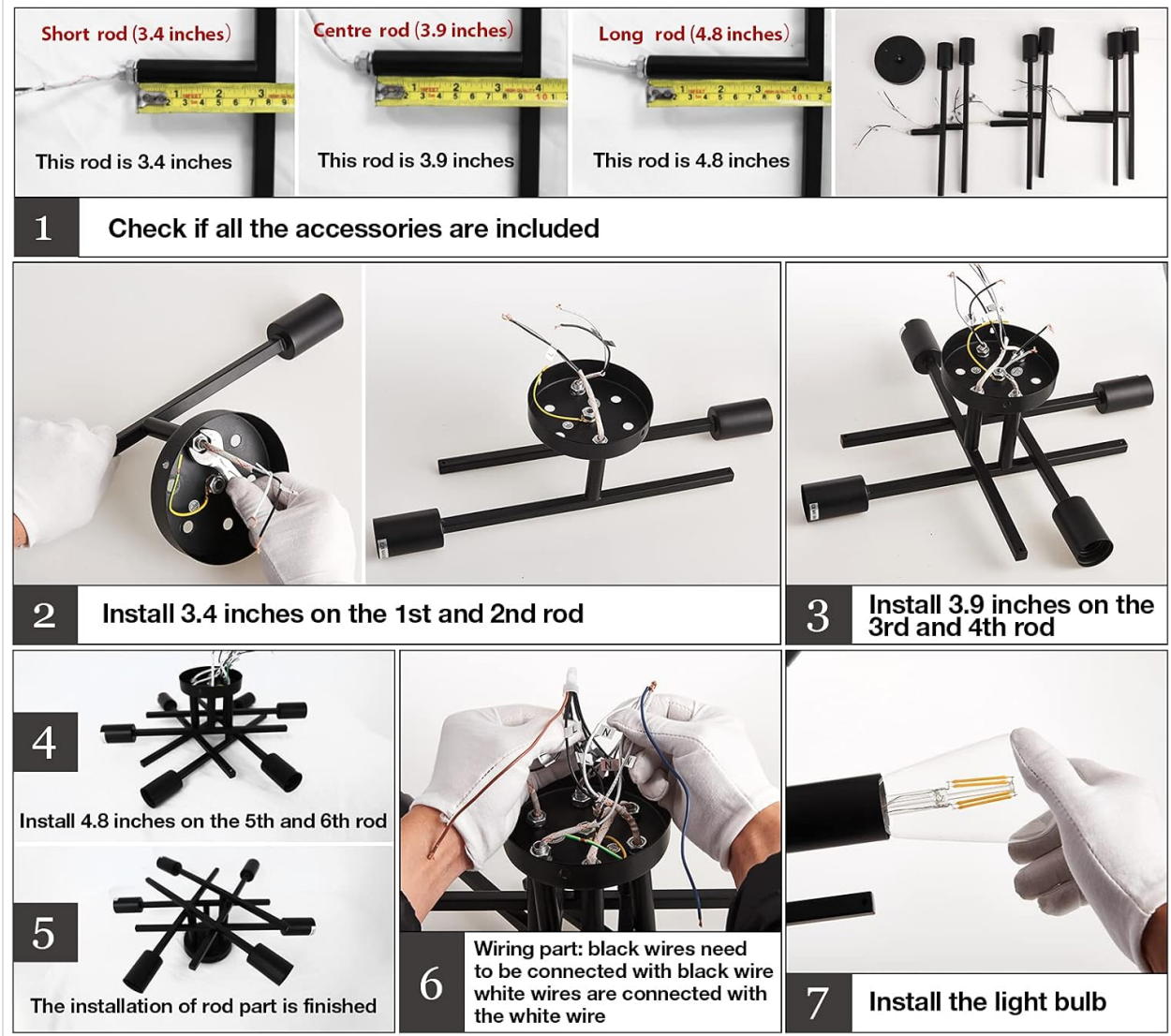


Figure 4: Visual guide for assembling the fixture arms according to specified lengths.

## 3. Wiring:

- Connect the black wires from the fixture to the black (live) wire from the ceiling junction box using wire nuts.
- Connect the white wires from the fixture to the white (neutral) wire from the ceiling junction box using wire nuts.
- Connect the ground wire from the fixture to the ground wire from the ceiling junction box.

*Note: The included wire nuts may be small for connecting multiple wires. Larger wire connectors may be needed for a secure connection. Use electrical tape or heat shrink tubing to manage wires within the canopy.*

Video 1: Detailed installation video for the 6-light ceiling fixture, including assembly and mounting steps. (Creator: ASGYISA)

Video 2: Specific video demonstrating how to link the wires for the 6-light modern chandelier. (Creator: ASGYISA)

- Mounting:** Secure the fixture to the ceiling junction box using the provided mounting screws.
- Install Bulbs:** Screw E26 base bulbs (not included) into each socket.

## OPERATING INSTRUCTIONS

Once installed, operate the light fixture using your standard wall switch. This fixture is dimmable, allowing you to adjust the light intensity if you use dimmable E26 bulbs and have a compatible dimmer switch installed.

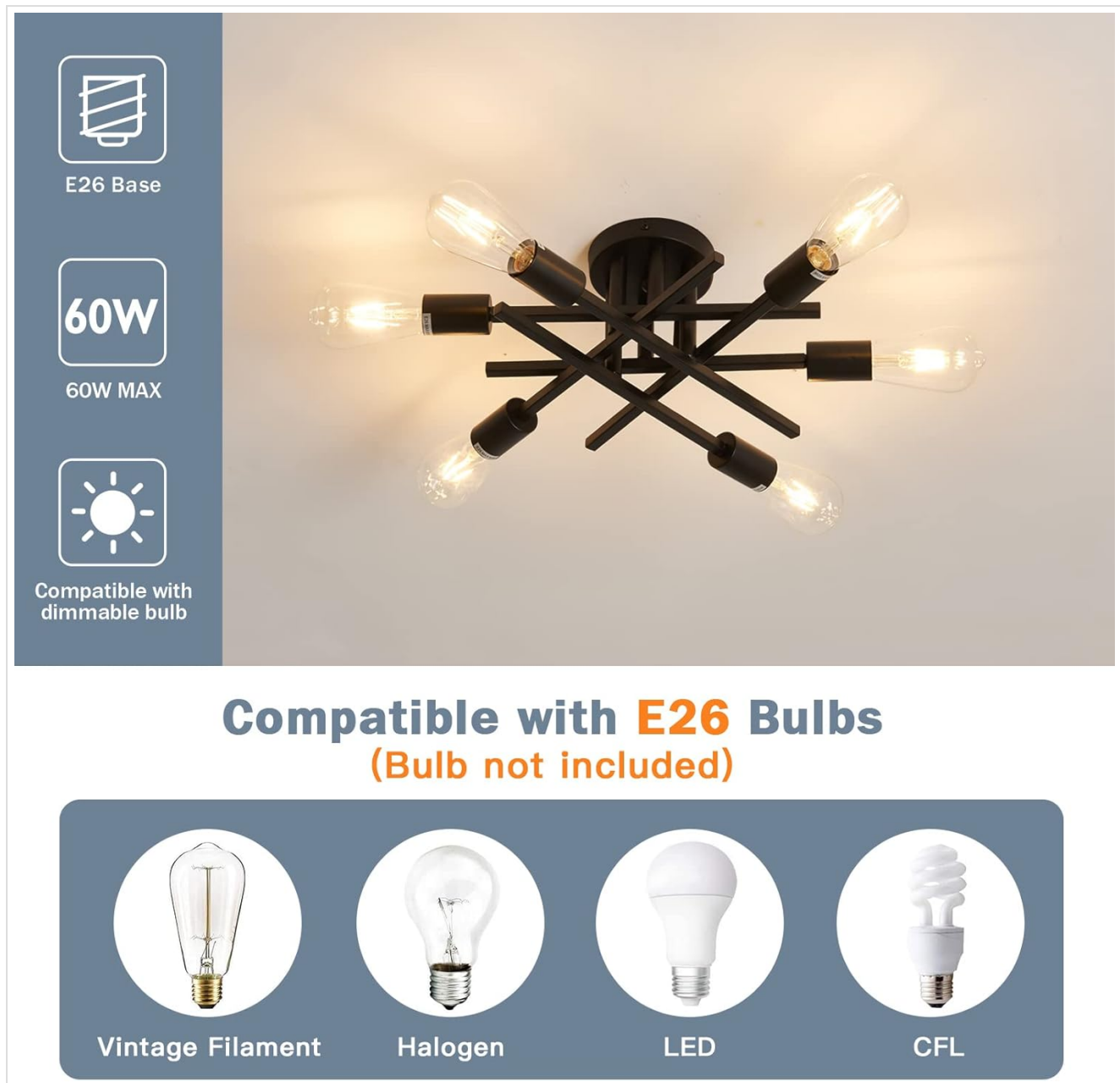


Figure 5: The fixture is compatible with various E26 bulb types, including Vintage Filament, Halogen, LED, and CFL.

Video 3: Demonstration of the 6-light ceiling light fixture in operation. (Creator: ASGYISA)

## MAINTENANCE

- **Cleaning:** To clean the fixture, ensure power is off. Wipe with a soft, dry cloth. Do not use abrasive cleaners or solvents as they may damage the finish.
- **Bulb Replacement:** Always turn off power before replacing bulbs. Allow bulbs to cool completely before handling. Replace with E26 base bulbs, not exceeding 60 watts.

## TROUBLESHOOTING

| Problem                                 | Possible Cause   | Solution  |
|---|--|---|
| Light does not turn on.                 | Loose wiring, faulty bulb, tripped circuit breaker.            | Check all wire connections. Replace bulb. Reset circuit breaker.  |
| Flickering lights.                      | Loose bulb, incompatible dimmer switch, unstable power supply. | Tighten bulbs. Ensure dimmer switch is compatible with LED/dimmable bulbs. Consult electrician for power supply issues. |
| Fixture is unstable after installation. | Improper mounting to junction box.                             | Ensure mounting plate and screws are securely fastened to the ceiling junction box.                                     |

## WARRANTY AND SUPPORT

ASGYISA is committed to providing quality products and satisfactory services. If you have any questions or problems after receiving the product or during installation, please do not hesitate to contact us via email. We are dedicated to ensuring your perfect shopping experience.

For further assistance, please refer to the contact information provided with your purchase or visit the official ASGYISA store online.