

## SYNCO SY-G1-Series

# SYNCO G1(A2) Pro Wireless Lavalier Microphone System

MODEL: SY-G1-SERIES (2 TRANSMITTERS + 1 RECEIVER WITH CHARGING CASE)

## Introduction

The SYNCO G1(A2) Pro is a professional-grade wireless lavalier microphone system designed for clear and stable audio recording. This system includes two transmitters (TX), one receiver (RX), and a portable charging case, making it ideal for various applications such as online classes, YouTube vlogging, TikTok content creation, interviews, and more. Featuring 2.4GHz digital transmission, one-touch noise cancellation, and real-time audio monitoring, the G1(A2) Pro ensures high-quality sound capture.



Figure 1: SYNCO G1(A2) Pro Wireless Lavalier Microphone System components.

## Package Contents

- 1x SYNCO G1(A2) Pro Receiver (RX)
- 2x SYNCO G1(A2) Pro Transmitters (TX)
- 1x Portable Charging Case
- 2x Wired Lavalier Microphones
- 2x Windscreen Covers (Dead Cats)
- 1x 3.5mm TRS Camera Cable
- 1x 3.5mm TRRS Phone Cable
- 1x USB Type-C Charging Cable

## Product Overview

The SYNCO G1(A2) Pro system consists of compact and lightweight units designed for ease of use and portability.

### Transmitter (TX) Unit

- **Built-in Microphone:** For direct audio capture.
- **3.5mm MIC Input:** For connecting external wired lavalier microphones.
- **Power/Mute Button:** Controls power and mutes the microphone.

- **Gain Control Buttons:** Adjusts microphone input sensitivity.
- **Status Indicator Light:** Displays pairing, battery, and mode status.
- **USB Type-C Port:** For direct charging.
- **Integrated Clip:** For easy attachment to clothing.

### Receiver (RX) Unit

- **3.5mm TRS Output:** Connects to cameras, camcorders, or other recording devices.
- **3.5mm TRS Headphone Jack:** For real-time audio monitoring.
- **Power Button:** Controls power.
- **Mode Button:** Switches between stereo, monaural, and safety channel modes.
- **Status Indicator Light:** Displays pairing, battery, and mode status.
- **USB Type-C Port:** For direct charging.
- **Integrated Clip:** For easy attachment to camera hot shoe or clothing.

### Charging Case

- **Charging Slots:** Securely holds and charges two TX units and one RX unit.
- **Battery Indicator Lights:** Shows the charging status of the case.
- **Accessory Pouch:** Stores cables and other small accessories.
- **USB Type-C Port:** For charging the case itself.

# 492-FOOT STABLE TRANSMISSION

2.4GHZ digital transmission up to 492ft(150m)

 <5MS

 492FT/150M(LOS)



Figure 2: Detailed view of Transmitter (TX) and Receiver (RX) units.

## Setup

1. **Charge Units:** Ensure all TX and RX units are fully charged using the charging case or direct USB-C connection. The charging case itself can be charged via its USB-C port.
2. **Power On:** Press and hold the power button on both TX and RX units until the indicator lights illuminate. The system features 2.4GHz digital transmission and Syncoder technology for automatic pairing upon power-on.
3. **Connect Receiver:** Connect the RX unit to your recording device (camera, smartphone, laptop) using



the appropriate 3.5mm cable (TRS for cameras, TRRS for smartphones).

4. **Attach Transmitter:** Clip the TX unit to the speaker's clothing. For optimal audio, position the built-in microphone or external lavalier microphone approximately 6-8 inches from the mouth.
5. **External Lavalier (Optional):** If using the wired lavalier microphone, plug it into the 3.5mm MIC input on the TX unit.

## Operating Instructions

---

### Digital 2.4GHz & Auto-Pairing

The G1(A2) Pro utilizes a 2.4GHz frequency spectrum and Syncoder technology for a secure, stable, and hassle-free audio system. TX and RX units automatically connect after power-on. Manual pairing is also supported if needed.

### 150m Transmission & One-Touch Noise Cancellation

The system offers stable and anti-interference signal transmission up to 492 ft (150m) line-of-sight (LOS) with ultra-low 12.5ms latency. The integrated DSP technology optimizes audio instantly. Press the noise cancellation button on the TX unit to activate/deactivate this feature.

# ONE-TOUCH NOISE CANCELLATION & GAIN CONTROL



Figure 3: Noise Cancellation and Gain Control on the Transmitter.

## Mute Function & Three Usage Modes

- **Mute:** Briefly press the transmitter's power/mute button to pause audio recording during filming.
- **Usage Modes:** The RX unit features stereo, monaural, and protect channel modes for versatility. Use the mode button on the RX to cycle through these options.

## Real-Time Audio Monitoring & Volume Control

The RX unit includes a 3.5mm TRS earphone jack for real-time audio monitoring. Adjust the volume on each transmitter using the gain control buttons for precise signal level optimization.

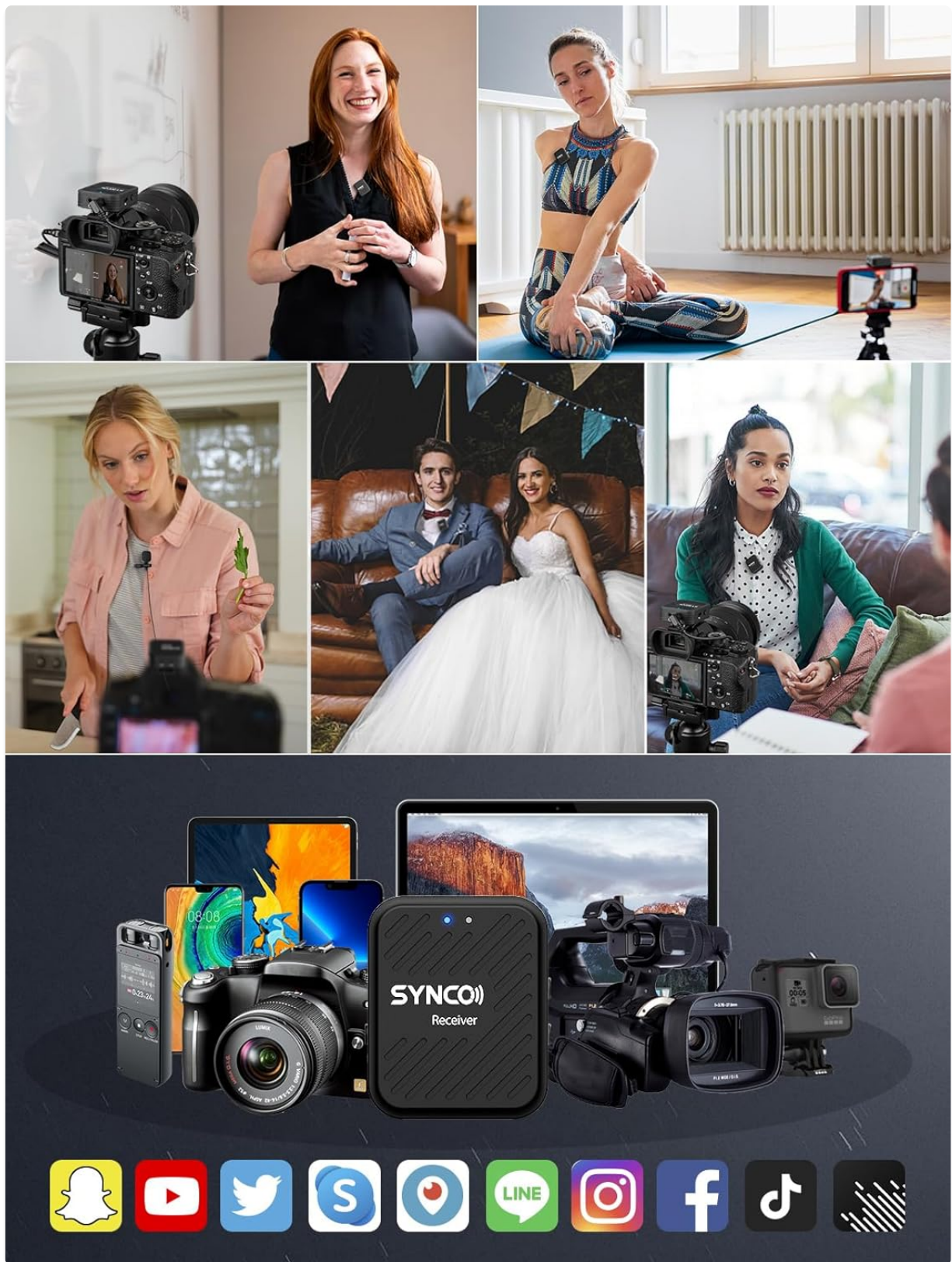


Figure 4: Real-time audio monitoring via the receiver unit.

### Multi-Device Compatibility

The system is compatible with various devices including camcorders, cameras, laptops, smartphones, and tablets. Ensure you use the correct 3.5mm cable (TRS for camera, TRRS for smartphone) for connection.

Video 1: Official SYNCO G2A2Pro video highlighting features like noise cancellation and battery life. This video demonstrates key functionalities of the SYNCO wireless microphone system.

### Charging & Battery Life



The G1(A2) Pro comes with a powerful charging case that provides up to 24 hours of continuous working time for the units. Each TX and RX unit also has a Type-C port for direct charging while in use, ensuring uninterrupted recording.

## WIRELESS CHARGING CASE, HASSLE-FREE RECORDING

Not only for charging, also for storage.



**2H**  
Full Charge

**24H**  
Usage Time  
(with charging case)

**8H**  
Working Long

Figure 5: Charging case with units, indicating full charge in 2 hours and 24 hours usage time.

## Maintenance

- **Cleaning:** Use a soft, dry cloth to clean the units and charging case. Avoid using liquids or abrasive cleaners.
- **Storage:** Store the system in its charging case in a cool, dry place when not in use.



- **Battery Care:** For long-term storage, charge the units and case to approximately 50% every three months to maintain battery health.

## Troubleshooting

Problem	Possible Cause	Solution
No Sound/Low Volume	Incorrect cable connection; Low TX/RX volume; Muted TX; Unpaired units.	Ensure correct cable (TRS/TRRS) is used and fully inserted. Adjust TX gain. Unmute TX. Re-pair units.
Poor Audio Quality/Interference	Distance too far; Obstructions; High ambient noise; Low battery.	Reduce distance to RX. Ensure clear line-of-sight. Activate noise cancellation. Charge units.
Units Not Pairing	Out of range; Interference; Pairing error.	Bring units closer. Power cycle both TX and RX. Perform manual pairing as per user manual.
Charging Case Not Charging	Faulty cable/adaptor; Case battery depleted.	Try a different USB-C cable and power adaptor. Ensure case is connected to a power source.

## Specifications

- **Model Number:** SY-G1-Series
- **Connectivity Technology:** Wireless (2.4GHz Digital)
- **Transmission Range:** Up to 492 ft / 150 m (LOS)
- **Latency:** 12.5ms
- **Microphone Form Factor:** Microphone System (Lavalier)
- **Polar Pattern:** Omnidirectional
- **Signal-to-Noise Ratio:** 80 dB
- **Special Features:** One-Touch Noise Cancellation, Mute Function, Volume Control, Real-Time Monitoring, Battery Indicator Light
- **Compatible Devices:** Camcorder, Camera, Laptop, Smartphone, Tablet
- **Power Source:** Battery Powered (Built-in rechargeable batteries)
- **Charging Case Usage Time:** Up to 24 hours (with charging case)
- **Item Weight:** 15.5 ounces
- **Package Dimensions:** 7.09 x 5.04 x 2.56 inches

## Warranty and Support

SYNCO products typically come with a manufacturer's warranty. Please refer to the warranty card included in your package or visit the official SYNCO website for detailed warranty information and support contacts. For technical assistance or product inquiries, please contact SYNCO customer service.

