

GAOMON PD1320

GAOMON PD1320 Pen Display Drawing Tablet User Manual

Model: PD1320

1. INTRODUCTION

The GAOMON PD1320 is a 13.3-inch full-laminated pen display drawing tablet designed for digital artists, designers, and animators. It offers a vibrant 120% sRGB color gamut, 8192 levels of pen pressure sensitivity, and 60-degree tilt support for a natural drawing experience. Compatible with Windows, macOS, and select Android devices, this lightweight and portable monitor is suitable for various creative and professional applications.



Image: The GAOMON PD1320 Pen Display Drawing Tablet, showcasing its display and accompanying digital pen.

2. WHAT'S IN THE BOX

Please verify that all items listed below are included in your package:

- GAOMON PD1320 Pen Display
- Digital Pen AP50
- Pen Holder
- 8 Replacement Nibs
- Foldable Stand
- Drawing Glove
- HDMI Cable
- USB Cable
- Power Adapter
- Quick Guide

Note: The inclusion of a gift stand may vary. If your set lacks the stand, this is expected.

What's in the box

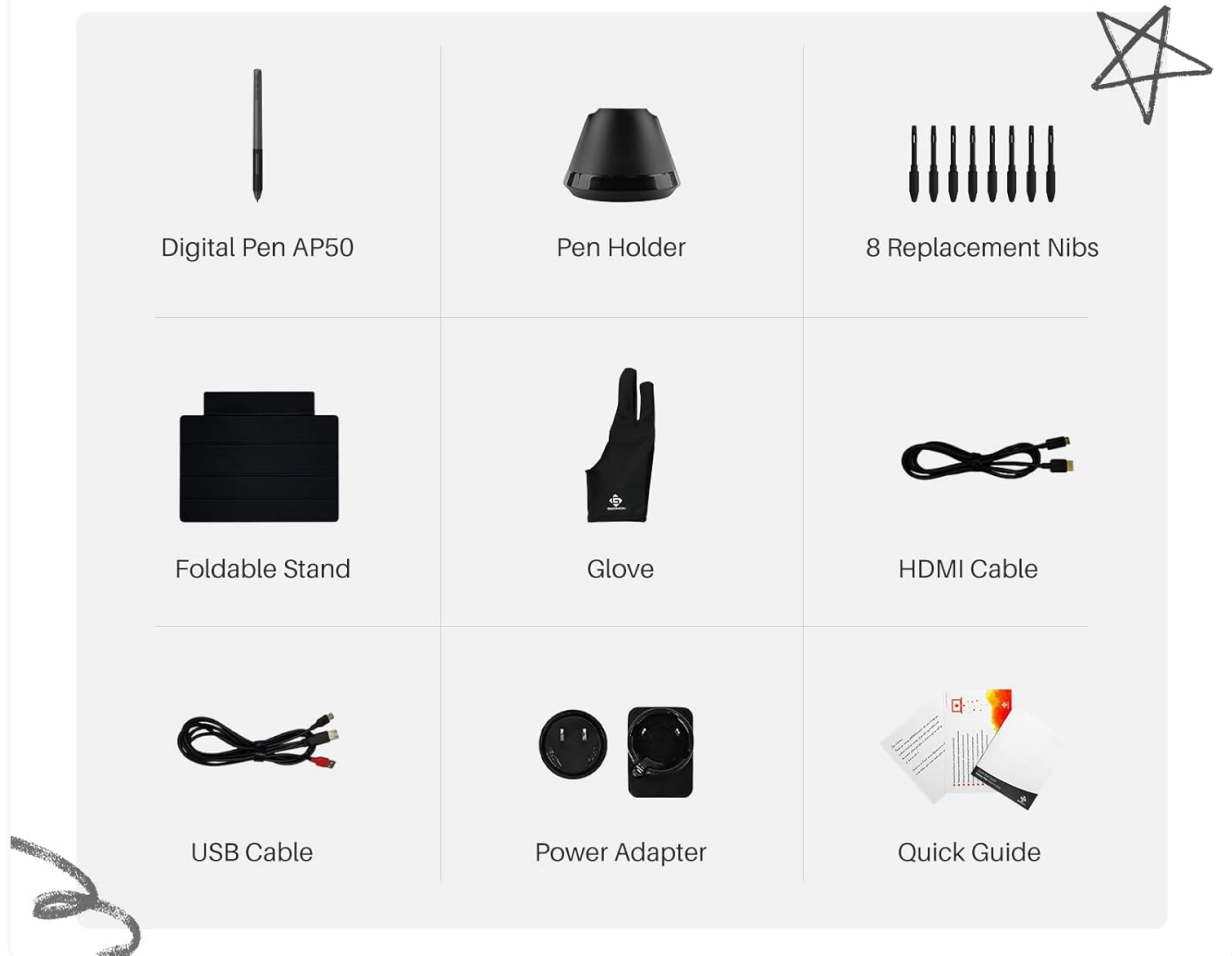


Image: All components included in the GAOMON PD1320 product package.

3. SETUP

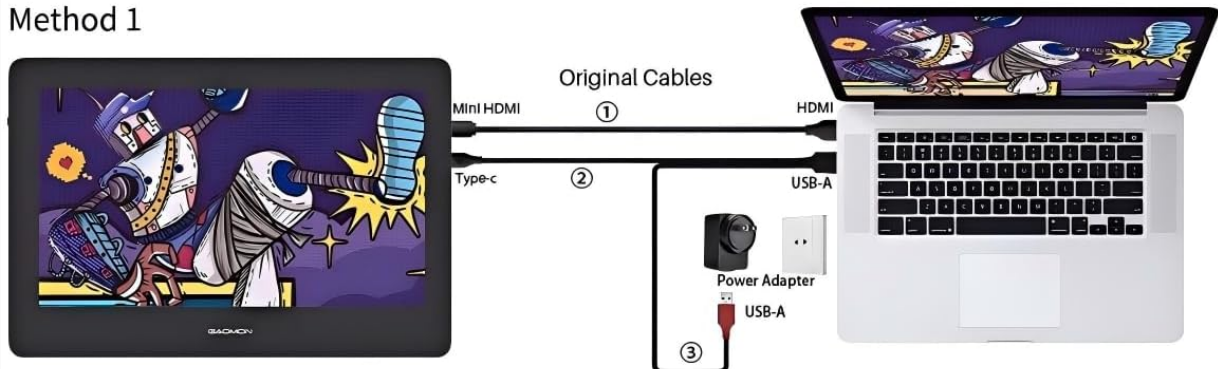
3.1 Connecting to Your Computer

The GAOMON PD1320 offers flexible connection options:

1. **Method 1 (Standard Connection):** Connect the tablet to your computer using the provided Mini HDMI cable for video, the Type-C cable for data, and the USB-A cable with the power adapter for power.
2. **Method 2 (Single Cable Connection - requires separate purchase):** If your computer supports a full-featured Type-C port (USB 3.1 Gen 1 with DP1.2), you can connect the tablet using a single full-featured Type-C cable (not included). Ensure the AC power plug is also connected to provide sufficient power.

Cable Connection ✨

Method 1



Method 2

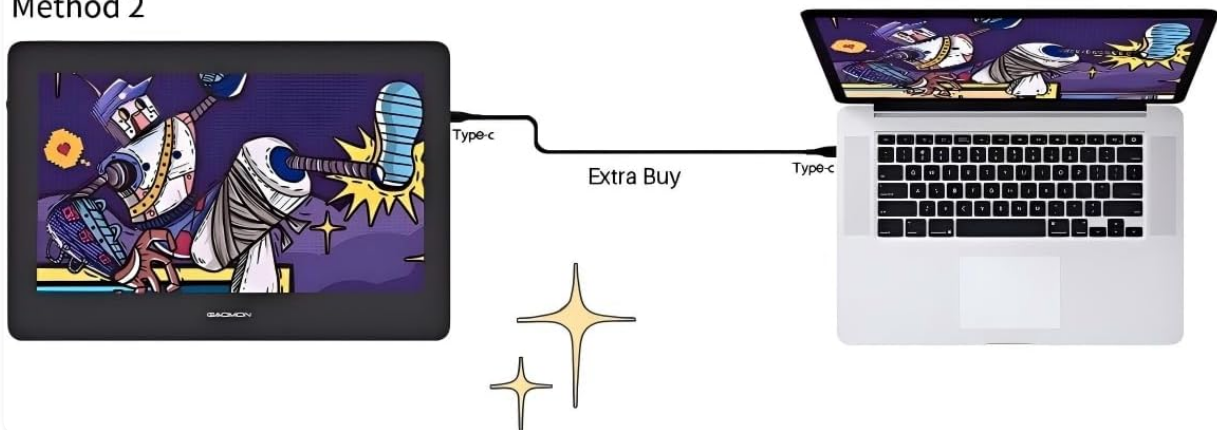


Image: Visual guide for connecting the PD1320 to a computer using different cable configurations.

3.2 Driver Installation

For optimal performance, it is crucial to install the correct drivers:

1. Visit the official GAOMON website (www.gaomon.net) and navigate to the 'Support' or 'Download' section.
2. Locate and download the driver specifically for the GAOMON PD1320 model that matches your operating system (Windows or macOS).
3. Before installation, uninstall any existing tablet drivers from other brands to prevent conflicts.
4. Follow the on-screen instructions to complete the driver installation. Restart your computer if prompted.

3.3 Powering the Device

The PD1320 can be powered directly by your computer via USB in some configurations, making an AC power plug optional for certain setups. However, for full functionality and stability, especially when connecting to Android devices or using a single full-featured Type-C cable, connecting the AC power adapter is recommended.



Image: The PD1320 tablet being stored, emphasizing its portability and reduced reliance on an AC power plug.

4. OPERATING INSTRUCTIONS

4.1 Using the Digital Pen (AP50)

The GAOMON AP50 digital pen is battery-free and offers advanced features for precise control:

- **Pressure Sensitivity:** Experience 8192 levels of pressure sensitivity, allowing for fine control over line thickness and opacity.
- **Tilt Support:** The pen supports 60 degrees of tilt recognition, enabling natural shading and brush effects.
- **Customizable Side Keys:** The pen features two customizable side keys that can be programmed for various functions (e.g., undo, erase) via the GAOMON driver software.



Image: Detailed features of the Artpaint AP50 Digital Pen, including pressure sensitivity and tilt support.

4.2 Screen Features

The PD1320 display is designed for visual clarity and comfort:

- **Full Lamination:** The full-laminated screen minimizes parallax, providing a more direct and accurate drawing experience.
- **Anti-Glare Film:** A pre-applied anti-glare film reduces reflections, allowing for comfortable use in various lighting conditions.
- **Vibrant Display:** Enjoy a 120% sRGB color gamut and 1920x1080 Full HD resolution for vivid and accurate color reproduction.



Image: A visual comparison demonstrating the effectiveness of the anti-glare film on the PD1320 display.

4.3 Android Device Connection

The GAOMON PD1320 can connect to compatible Android phones. Ensure your Android device supports Dex Mode, Desktop Mode, or TNT Mode. A full-featured Type-C cable (purchased separately) is required for this connection, along with the AC power adapter for the PD1320.



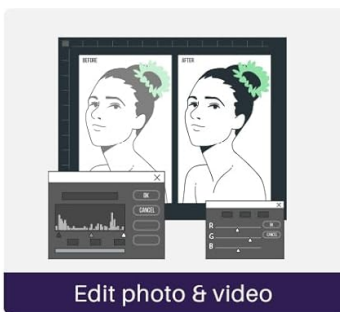
Image: The PD1320 connected and in use with an Android smartphone.

4.4 General Usage

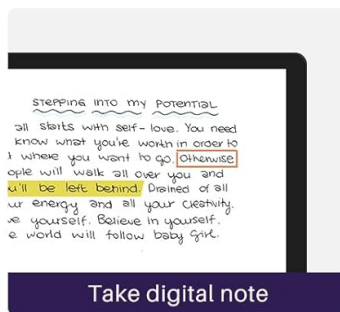
The PD1320 is versatile for various digital tasks:

- **Digital Art:** Ideal for drawing, sketching, painting, and graphic design.
- **3D Art & Animation:** Suitable for 3D modeling, texturing, and animation workflows.
- **Online Education & Remote Work:** Use for annotating documents, presentations, and participating in virtual meetings.

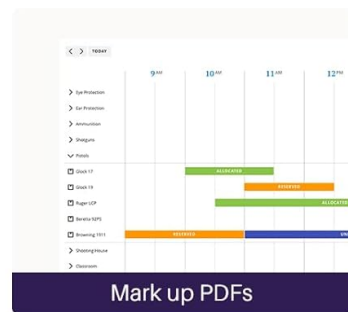
Discover what you can do



Edit photo & video



Take digital note



Mark up PDFs

Image: A user engaging in digital art on the PD1320, illustrating its diverse applications.

5. COMPATIBILITY

5.1 Operating Systems

The GAOMON PD1320 is compatible with the following operating systems:

- Windows 7/8/8.1 or above
- macOS 10.12 or above
- Android (requires USB 3.0 DP1.2 or compatible Dex/Desktop/TNT mode)

5.2 Software Compatibility

The tablet works with most major drawing and creative software, including but not limited to:

- Adobe Photoshop, Illustrator
- SAI version 2
- Krita
- FireAlpaca
- GIMP
- SketchBook Pro

- MediBang Paint Pro
- Blender
- Zoom (for online education/meetings)

Vesatile Compatibility

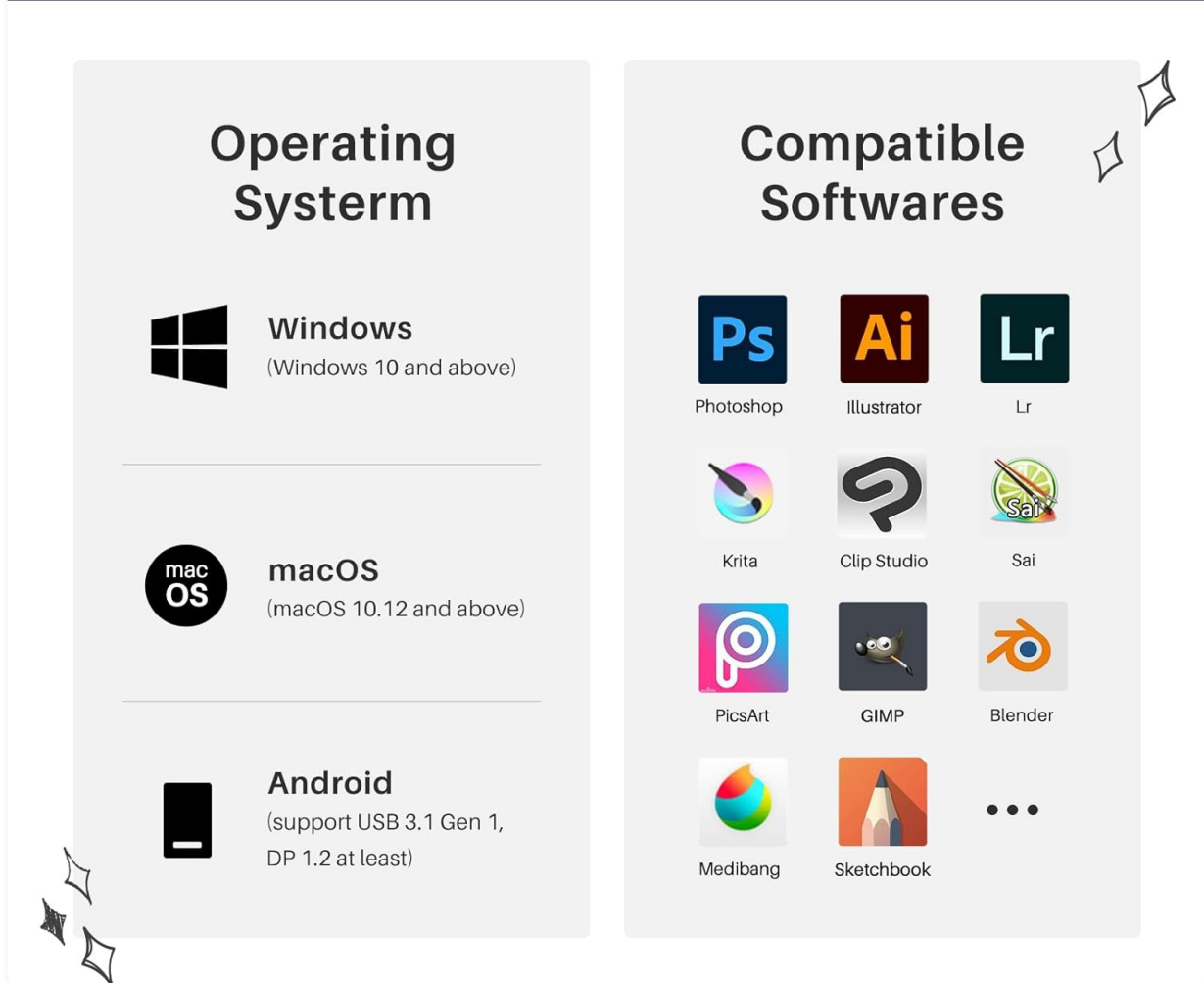


Image: A comprehensive overview of compatible operating systems and creative software.

6. MAINTENANCE

6.1 Cleaning the Screen and Device

To maintain optimal performance and appearance:

- Gently wipe the screen with a soft, lint-free cloth. For stubborn smudges, slightly dampen the cloth with water or a screen-safe cleaner.
- Avoid using harsh chemicals, abrasive materials, or excessive moisture, as these can damage the screen or internal components.
- Clean the body of the tablet and the digital pen with a dry, soft cloth.

6.2 Pen Nib Replacement

The digital pen nibs will wear down over time with regular use. Replace them when they become too short

or sharp to ensure a smooth drawing experience:

1. Use the nib clip tool (often integrated into the pen holder) to carefully pull out the old nib.
2. Insert a new replacement nib firmly into the pen barrel until it clicks into place.
3. Ensure the nib is securely seated before resuming use.

7. TROUBLESHOOTING

7.1 Common Issues and Solutions

- **No Display/Signal:**
 - Ensure all cables (HDMI, Type-C, USB, power) are securely connected.
 - Verify that your computer's display settings are configured to extend or duplicate the display to the PD1320.
 - Try connecting the tablet to a different port on your computer or a different computer to isolate the issue.
- **Pen Not Responding/No Pressure Sensitivity:**
 - Confirm that the GAOMON driver is correctly installed and running. Reinstall the driver if necessary.
 - Check if any other tablet drivers are installed and uninstall them.
 - Ensure the digital pen nib is properly inserted and not excessively worn. Replace if needed.
 - Test the pen in the GAOMON driver settings to check pressure functionality.
- **Inaccurate Cursor/Parallax:**
 - Perform screen calibration through the GAOMON driver software.
 - Ensure your display resolution is set to the recommended 1920x1080 for the PD1320.
- **Color Discrepancy:**
 - Adjust color settings through your computer's graphics control panel or the GAOMON driver.
 - Note that color calibration may require advanced tools for professional accuracy.
- **Buttons Not Working/Unresponsive:**
 - Ensure the tablet is properly powered and connected.
 - Check the GAOMON driver settings to confirm button assignments.
 - If experiencing intermittent issues, ensure no other devices are causing interference.

8. SPECIFICATIONS

Feature	Detail
Product Dimensions	13.5 x 9.17 x 0.53 inches (343 x 233 x 13.4 mm)
Item Weight	1.94 pounds (880g)
Display Area	11.57 x 6.5 inches (293.8 x 165.2 mm)
Screen Size	13.3 inches
Resolution	1920 x 1080 (Full HD)

Color Gamut	120% sRGB (86% NTSC)
Contrast Ratio	1000:1
Pressure Sensitivity	8192 Levels
Tilt Support	60 degrees
Connectivity Technology	HDMI, USB, Type-C
Operating System Support	Windows 7 or later, macOS 10.12 or later, Android (USB3.0 DP1.2)
Special Features	Full Lamination, Anti-Glare Film



Image: Detailed dimensions and port layout of the GAOMON PD1320 tablet.

9. WARRANTY AND SUPPORT

9.1 Warranty Information

GAOMON products typically come with a manufacturer's warranty covering defects in materials and workmanship. Please refer to the warranty card included in your product package or visit the official

GAOMON website for specific warranty terms and conditions applicable to your region.

9.2 Customer Support

For technical assistance, troubleshooting, or any questions regarding your GAOMON PD1320, please contact GAOMON customer support:

- **Online Support:** Visit the official GAOMON website (www.gaomon.net) for FAQs, driver downloads, and contact forms.
- **Email Support:** Send a message to GAOMON via Amazon Message for product-related inquiries before or after purchase.

GAOMON is committed to providing quality products and support to the digital creative community.