

Manuals+

[Q & A](#) | [Deep Search](#) | [Upload](#)

manuals.plus /

› [Weiser](#) /

› [Weiser Smartcode 10 Satin Nickel Keyless Entry Door Lock/Deadbolt Lock, Keypad Door Lock with Auto Lock, Up to 30 User Codes, Commercial Electronic Door Handles, Electronic Door Locks for Entry Door Satin Nickel Commercial Handle](#)

Weiser 9GED26000-001

Weiser SmartCode 10 Electronic Door Lock User Manual

This manual provides comprehensive instructions for the installation, operation, maintenance, and troubleshooting of your Weiser SmartCode 10 Electronic Door Lock.

Brand: Weiser | **Model:** 9GED26000-001

1. PRODUCT OVERVIEW

The Weiser SmartCode 10 is a commercial-grade electronic lever lock designed for secure and convenient keyless entry. It features an auto-lock function, simple programming, and supports up to 30 customizable user access codes. This lock is ideal for various applications including hotels, motels, office buildings, retail stores, and multi-family housing.



Figure 1.1: Weiser SmartCode 10 Electronic Door Lock (Exterior and Interior)



Figure 1.2: Recommended Uses for SmartCode 10 Commercial Lever

2. SETUP AND INSTALLATION

The Weiser SmartCode 10 lock is designed for easy installation with minimal tools. A screwdriver is typically the only tool required.

2.1. Included Components

- Electronic Door Assembly Unit (Interior and Exterior)
- Levers
- SmartKey Tool
- 2 Keys
- Latch
- Screws
- Strike Plate
- Allen Wrench
- Spindle Manual

2.2. Installation Steps

Refer to the detailed Spindle Manual included in your package for specific, step-by-step installation instructions. General steps include:

1. Prepare the door: Ensure the door bore hole and backset are compatible with the lock.
2. Install the latch and strike plate.
3. Assemble the exterior and interior electronic units.
4. Connect the cable between the units.
5. Secure the lock to the door with the provided screws.
6. Install the levers.
7. Insert the 9V battery (see Section 3.4).
8. Perform the door handing process as described in the manual to calibrate the lock.



Figure 2.1: Installed Weiser SmartCode 10 Lock (Interior View)

3. OPERATING INSTRUCTIONS

3.1. Keyless Entry and Backlit Keypad

The SmartCode 10 allows entry using a personalized code on the keypad. The keypad is backlit and remains lit for 5 seconds after inactivity, ensuring visibility in low-light conditions.

KEYLESS ENTRY

Makes coming and going secure and convenient.

AUTO LOCK

Lock your door with a single touch. No additional turning/twisting needed.



Figure 3.1: Keyless Entry and Auto Lock Features

3.2. User Access Codes

The lock supports up to 30 unique user access codes. These codes can be customized and shared with employees, maintenance personnel, or service providers. Refer to the programming guide in your manual for instructions on adding, deleting, or modifying user codes.

MULTIPLE USER ACCESS CODES



Up to 30 user codes that can be customized for sharing

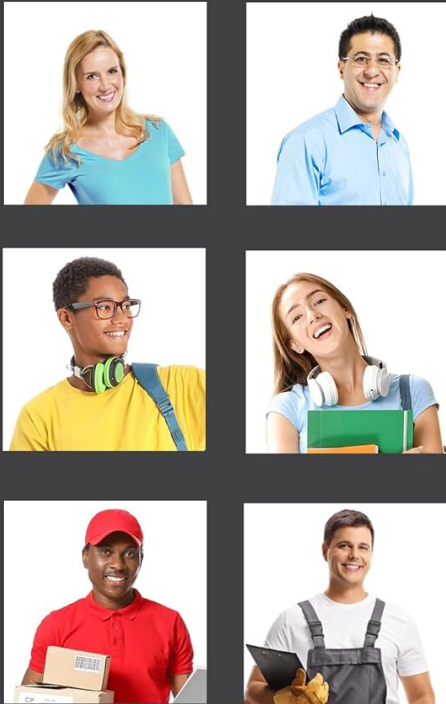


Figure 3.2: Multiple User Access Codes

3.3. Auto-Lock and Passage Mode

The SmartCode 10 features an auto-lock function, which automatically locks the door after entry. The interior turn piece allows you to switch between 'Auto-Lock' and 'Passage Mode'.

- **Auto-Lock Mode:** The door always locks after entry. A key or code is required for re-entry.
- **Passage Mode:** The door remains unlocked, allowing free entry without a code or key.

Property managers can disable the passage function, ensuring the unit auto-locks every time and requires a key or code for entry. This is ideal for restrooms or utility closets.

SWITCH BETWEEN 'AUTO-LOCK' AND 'PASSAGE' MODE

AUTO-LOCK MODE

Key or code is needed for entry from the outside



PASSAGE MODE

Stays unlocked, allowing entry without a key or code



Figure 3.3: Auto-Lock Mode vs. Passage Mode

3.4. Emergency Egress

For safety, the interior lever is always free to allow exit at any time, regardless of the lock's status.

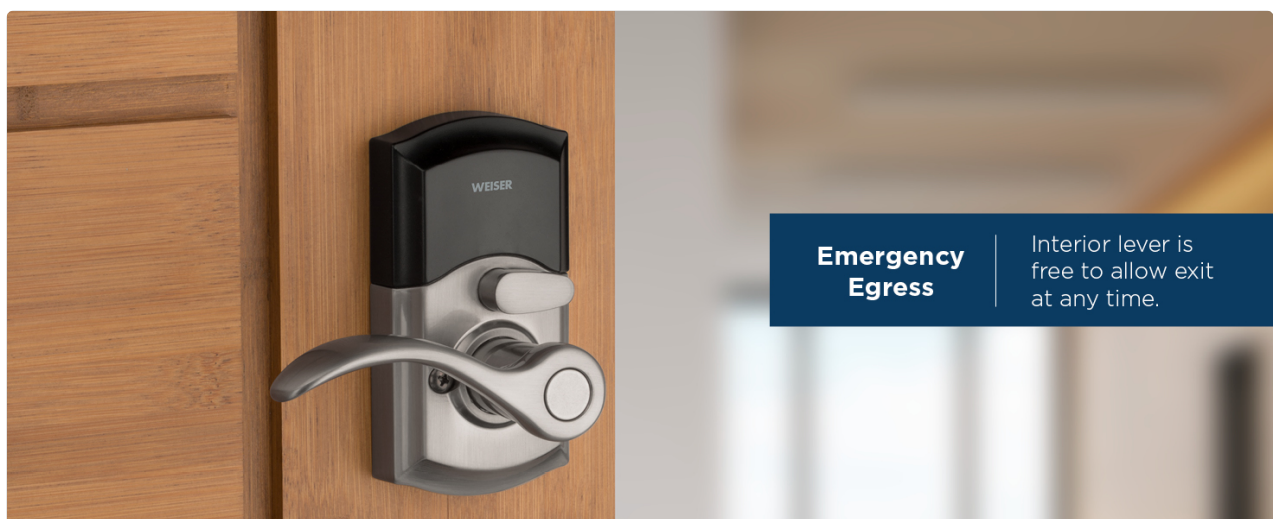
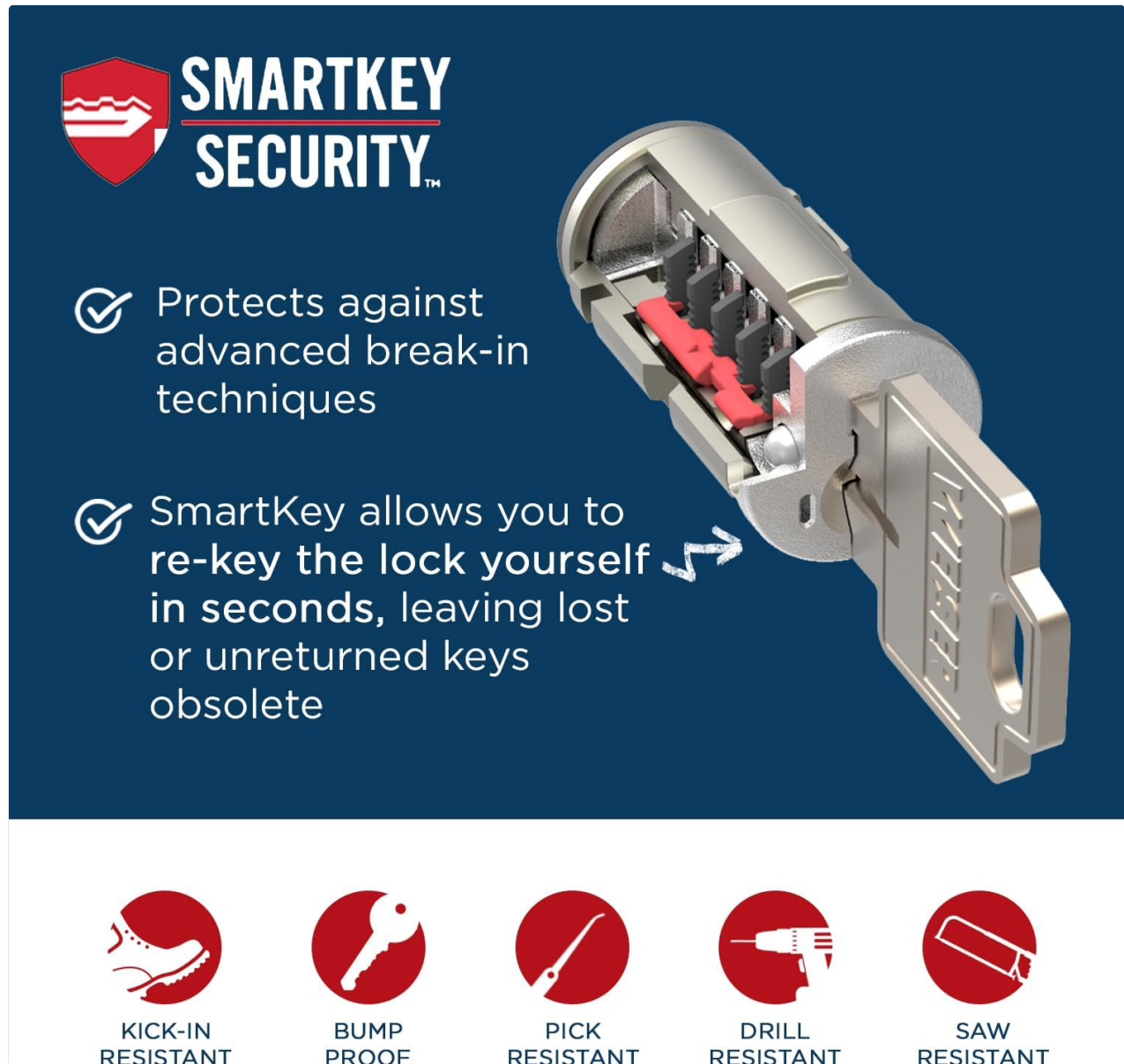


Figure 3.4: Emergency Egress Feature

3.5. SmartKey Re-key Technology

The SmartCode 10 features SmartKey re-key technology, which protects against advanced break-in techniques and allows you to re-key the lock yourself in seconds. This feature makes lost or unreturned keys obsolete.



SMARTKEY SECURITY™

- ✓ Protects against advanced break-in techniques
- ✓ SmartKey allows you to re-key the lock yourself in seconds, leaving lost or unreturned keys obsolete

Security Features:

- KICK-IN RESISTANT
- BUMP PROOF
- PICK RESISTANT
- DRILL RESISTANT
- SAW RESISTANT

Figure 3.5: SmartKey Security Overview



SMARTKEY SECURITY™

Easily re-key yourself

Reset tool goes here

One Key for all your Locks

Featuring SmartKey Security

Protects against advanced break-in techniques and allows you to re-key your lock yourself in seconds. Re-key the lock to any Weiser key.

Security Made Convenient

How to Re-Key in Seconds

1. Insert the Current Key and rotate it 90° clockwise.
2. Insert the SmartKey Tool into the SmartKey hole. Remove the SmartKey tool and the current key.
3. Insert New Key and rotate it 180° counter-clockwise. Rotate the new key 90° back to the starting position, and remove it.

Figure 3.6: How to Re-key in Seconds

4. MAINTENANCE

4.1. Battery Replacement

The SmartCode 10 operates on a 9V alkaline battery. When the battery is low, the lock will provide an audible and/or visual indicator. To replace the battery:

1. Locate the battery cover on the interior assembly of the lock.
2. Remove the battery cover.
3. Carefully remove the old 9V battery.
4. Insert a new 9V alkaline battery, ensuring correct polarity.
5. Replace the battery cover.

It is recommended to replace the battery annually or when the low battery indicator appears to ensure optimal performance.

4.2. Cleaning

Clean the lock's exterior with a soft, damp cloth. Avoid using abrasive cleaners or solvents, as these can damage the finish.

5. TROUBLESHOOTING

If you encounter issues with your SmartCode 10 lock, try the following common troubleshooting steps:

- **Lock not responding:** Check the battery. Replace with a new 9V alkaline battery if necessary.
- **Keypad not lighting up:** This usually indicates a low battery. Replace the battery.
- **Codes not working:** Ensure you are entering the correct code. Try reprogramming the user codes as per the manual. Perform the door handing process again.
- **Lock not engaging/disengaging:** Check for any obstructions in the door frame or latch. Ensure the lock is properly aligned and secured to the door. Re-perform the door handing process.
- **Unexpected auto-locking:** Verify the lock is not in 'Disable Passage Mode' if you intend for it to remain unlocked.

For persistent issues, refer to the detailed troubleshooting section in your Spindle Manual or contact customer support.

6. SPECIFICATIONS

Feature	Detail
Model Number	9GED26000-001
Product Dimensions	19.56 x 13.46 x 23.11 cm
Item Weight	2.13 kg
Colour	Satin Nickel
Style	Commercial

Feature	Detail
Finish	Satin Nickel
Material	Metal
Lock Type	Cylindrical
Power Source	9V Alkaline Battery (Included)
Special Features	Easy to Install, Auto Lock, SmartKey Technology, Backlit Keypad
User Codes	Up to 30
Country of Origin	China

DIMENSIONS

WEISER® SmartCode 10 Commercial



Figure 6.1: Product Dimensions

7. WARRANTY INFORMATION






The Weiser SmartCode 10 Electronic Door Lock comes with a **Lifetime Mechanical and Finish Warranty**. This warranty covers defects in material and workmanship for the lifetime of the product, provided it is installed and maintained according to the manufacturer's instructions. For specific terms and conditions, please refer to the warranty documentation included with your product or visit the official Weiser website.

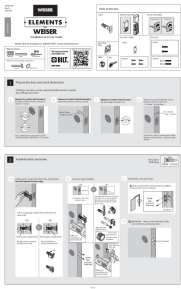
8. CUSTOMER SUPPORT

For further assistance, technical support, or warranty claims, please contact Weiser customer service. You can find contact information on the official Weiser website or in the documentation provided with your product.

Weiser Official Website: www.weiserlock.com

Related Documents - 9GED26000-001

	<p>Weiser Powerbolt 2 Keyless Entry Door Lock Installation and User Guide</p> <p>Comprehensive guide for installing and using the Weiser Powerbolt 2 Matte Black Keyless Entry Door Lock/Deadbolt Lock. Includes instructions for setup, programming user codes, changing master codes, and troubleshooting.</p>
	<p>Weiser SmartCode Keypad Electronic Locks Quick Start Guide and Installation Instructions</p> <p>Comprehensive guide for installing, programming, and using Weiser SmartCode Keypad Electronic Locks, covering parts, tools, step-by-step installation, programming features, system alerts, and important safeguards.</p>
	<p>Weiser SmartCode Touchpad Electronic Locks Quick Start Guide</p> <p>Comprehensive guide to installing and programming your Weiser SmartCode Touchpad Electronic Lock, including parts list, tools, step-by-step installation, operation, system alerts, and programming instructions.</p>
	<p>Weiser Powerbolt 2 Keyless Entry Door Lock Installation and User Guide</p> <p>Comprehensive guide for installing and using the Weiser Powerbolt 2 touchpad keyless entry door lock, including setup, programming, troubleshooting, and safety information.</p>
	<p>Weiser SmartCode 5 Lever Programming and Troubleshooting Guide</p> <p>A comprehensive guide to programming and troubleshooting the Weiser SmartCode 5 Lever electronic lock, covering mastercode setup, user code management, and common issues.</p>



[Weiser Elements Installation and User Guide](#)

Comprehensive installation and user guide for the Weiser Elements electronic door lock, detailing setup, operation, and troubleshooting.