

Humminbird SOLIX 15 Chirp MEGA SI+ G3

Humminbird SOLIX 15 Chirp MEGA SI+ G3 Fish Finder Instruction Manual

1. INTRODUCTION

The Humminbird SOLIX 15 CHIRP MEGA SI+ G3 is an advanced fish finder designed to enhance your marine navigation and fishing experience. It integrates cutting-edge technologies such as MEGA Side Imaging+, MEGA Down Imaging+, Dual Spectrum CHIRP Sonar, and AutoChart Live, all displayed on a clear Cross Touch® touchscreen. This manual provides essential information for setting up, operating, and maintaining your device to ensure optimal performance.

2. WHAT'S IN THE BOX

Upon unboxing your Humminbird SOLIX 15 CHIRP MEGA SI+ G3, verify that all the following components are included:

- Fish finder control head
- Power cable
- XM 14 HW MSI T transom-mount transducer
- Mounting hardware
- Gimbal mounting bracket
- Unit cover

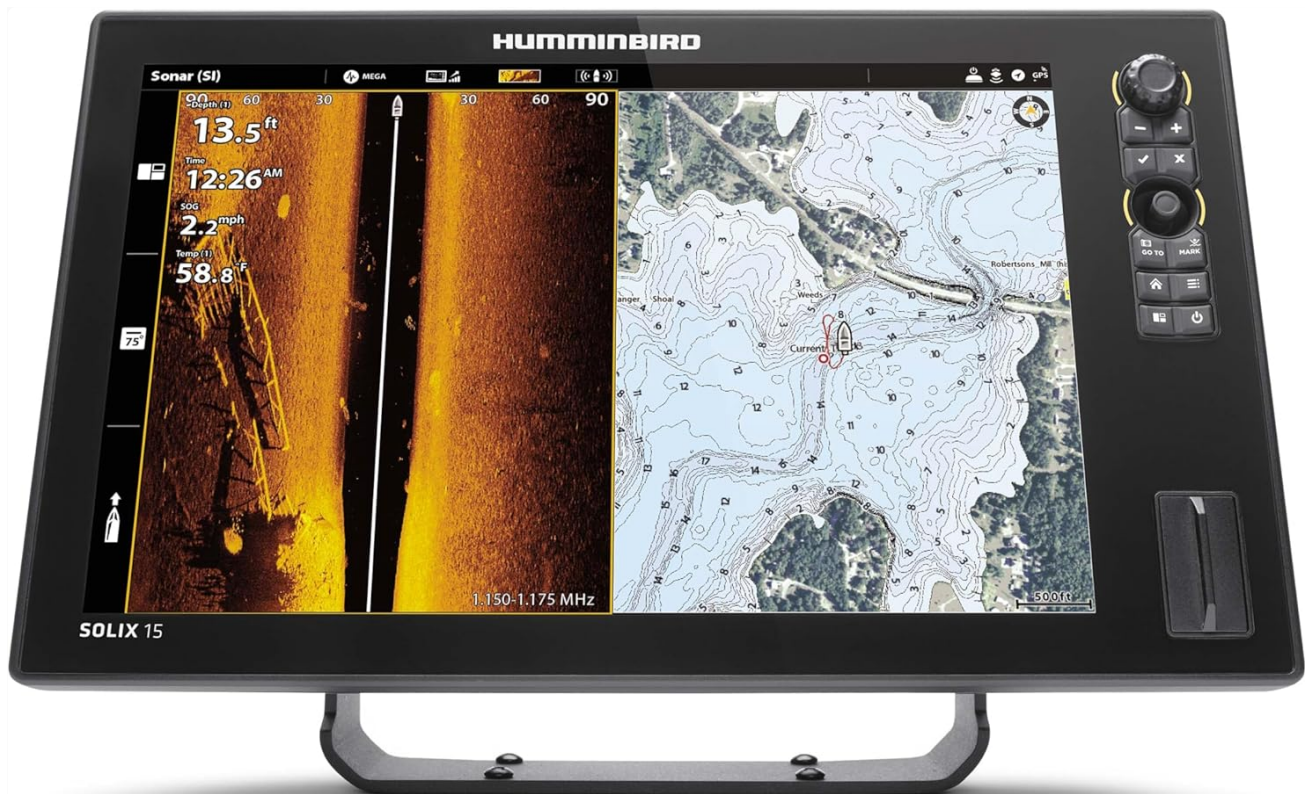


Image: The main control head of the Humminbird SOLIX 15 CHIRP MEGA SI+ G3 fish finder.

3. SETUP AND INSTALLATION

Proper installation is crucial for the optimal performance of your SOLIX 15 CHIRP MEGA SI+ G3. This section outlines the basic steps for connecting the main components.

3.1. Transducer Installation

The XM 14 HW MSI T transom-mount transducer is designed for clear and detailed sonar readings. Ensure it is mounted securely on your boat's transom, following the detailed instructions provided in the separate transducer installation guide. Proper placement avoids interference and maximizes sonar effectiveness.

3.2. Control Head Mounting

Use the provided gimbal mounting bracket to securely attach the fish finder control head to your desired location on the boat. Ensure the mounting surface is stable and allows for easy access to the touchscreen and keypad controls.



Image: Side view of the SOLIX 15 unit showing the mounting bracket.

3.3. Power and Cable Connections

Connect the power cable to the control head and a suitable 12V DC power source on your boat. Ensure all connections are secure and waterproof. The transducer cable connects directly to the appropriate port on the back of the control head. For networking capabilities, connect Ethernet cables to other compatible devices.



Image: Rear view of the SOLIX 15 unit displaying the various connection ports for power, transducer, and Ethernet.

4. OPERATING YOUR FISH FINDER

The SOLIX 15 CHIRP MEGA SI+ G3 offers a user-friendly interface with powerful features.

4.1. Cross Touch Interface

Control your fish finder using either the responsive touchscreen or the intuitive keypad. All menu navigation and settings adjustments can be performed using both methods, providing flexibility regardless of conditions.



Image: A hand demonstrating interaction with the touchscreen interface of the SOLIX 15.

4.2. Sonar Views

Leverage the advanced sonar technologies for a comprehensive view of the underwater environment:

- **MEGA Side Imaging+**: Provides clear, high-resolution views up to 250 feet to either side of your boat, ideal for locating structure and fish.
- **MEGA Down Imaging+**: Offers crystal-clear, high-resolution views up to 250 feet directly beneath your boat, perfect for identifying bottom structure and fish directly below.
- **Dual Spectrum CHIRP Sonar**: Delivers exceptional 2D sonar with superior target separation and fish clarity, allowing you to distinguish individual fish and bait schools.



Image: The SOLIX 15 screen showing a detailed MEGA Down Imaging+ view of underwater structure and fish.



Image: Another view of the SOLIX 15 screen, highlighting the clarity of MEGA Down Imaging+ in identifying submerged trees and fish.

4.3. Navigation and Mapping

- **Internal GPS and Humminbird Basemap:** Navigate with confidence using the enhanced basemap, which provides clear views of underwater terrain, points of interest, buoys, hazards, and depth markers.
- **AutoChart Live:** Create real-time maps of your fishing spots, including depth contours, bottom hardness, and vegetation. The device comes with 8 hours of built-in recording time and is compatible with AutoChart Zero Line SD cards for extended mapping.
- **Premium Chart Compatibility:** The SOLIX 15 is compatible with premium charts from Humminbird LakeMaster, CoastMaster, and Navionics for detailed cartography.

4.4. Networking and Connectivity

- **One-Boat Network Compatible:** Seamlessly integrate with Minn Kota motors and Cannon Optimum downriggers for enhanced boat control and fishing features.
- **Ethernet Networking:** Build a powerful fishing system by connecting multiple fish finders or adding technologies like Minn Kota i-Pilot Link and Humminbird CHIRP Radar.
- **Built-in Wi-Fi and NMEA 2000®:** Provides additional connectivity options for data sharing and system integration.
- **Bluetooth®:** Allows for wireless accessory control and software updates.

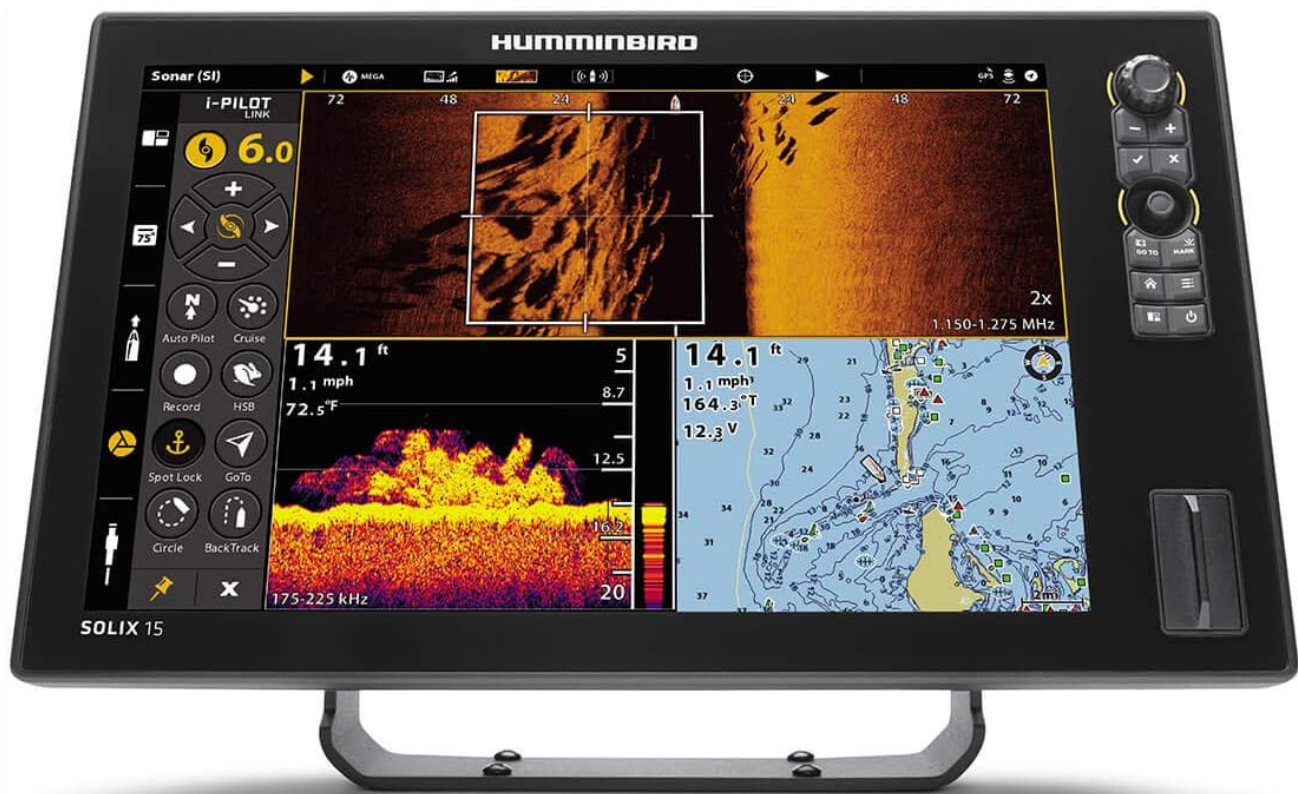


Image: The SOLIX 15 screen showing integration with Minn Kota i-Pilot Link for advanced trolling motor control.

4.5. Product Overview Video

Video: An official product overview of the Humminbird SOLIX 15 G2 Fish Finder with CHIRP, Mega Si+.

5. MAINTENANCE

To ensure the longevity and optimal performance of your Humminbird SOLIX 15 CHIRP MEGA SI+ G3, follow these maintenance guidelines:

- **Cleaning:** Regularly clean the screen and unit housing with a soft, damp cloth. Avoid abrasive cleaners or solvents that could damage the display or finish.
- **Software Updates:** Periodically check the Humminbird website for software updates. Keeping your unit's software current ensures you have the latest features and performance enhancements.
- **Storage:** When not in use, store the unit in a dry, protected environment. Use the provided unit cover to protect the screen from scratches and dust.
- **Cable Inspection:** Inspect all cables and connections regularly for any signs of wear, corrosion, or damage. Replace damaged cables immediately to prevent electrical issues.

6. TROUBLESHOOTING

If you encounter issues with your Humminbird SOLIX 15 CHIRP MEGA SI+ G3, consider the following basic troubleshooting steps:

- **No Power:** Check all power connections, including the battery terminals and the power cable connection to the unit. Ensure the fuse in the power cable is intact and of the correct rating (e.g., 7.5 amp slow blow or MDL fuse).
- **No Sonar Reading:** Verify that the transducer cable is securely connected to the unit. Ensure the transducer

is properly submerged in water and free from obstructions. Check sonar settings to ensure the correct transducer type is selected.

- **GPS Issues:** Ensure the unit has a clear view of the sky for optimal satellite reception. Check GPS settings within the unit.
- **Screen Freezing/Unresponsive:** Try restarting the unit. If the issue persists, perform a factory reset (refer to the full user manual for instructions, as this will erase custom settings).

For more detailed troubleshooting or persistent issues, refer to the comprehensive user manual or contact Humminbird customer support.

7. SPECIFICATIONS

Feature	Specification
Brand	Humminbird
Model Name	SOLIX
Model Number	411570-1
Power Source	Battery Powered
Screen Size	15.4 Inches
Display Type	LCD
Item Weight	17.8 Pounds
Mounting Type	Surface Mount
UPC	082324054877
Product Dimensions	6 x 6 x 6 inches
Connectivity Technologies	Bluetooth
Special Features	Touchscreen
Other Display Features	Wireless
Human Interface Input	Touchscreen
Color	Black
Manufacturer	Humminbird
Date First Available	October 27, 2020

8. WARRANTY AND SUPPORT

Your Humminbird SOLIX 15 CHIRP MEGA SI+ G3 comes with a manufacturer's warranty. Please refer to the warranty card included in your product packaging for specific terms, conditions, and registration details.

For technical assistance, troubleshooting, or service inquiries, please contact Humminbird customer support. Contact information can typically be found on the Humminbird website or in your product documentation.

