

VCELINK GJ671BL-1P-US

VCELINK RJ45 Crimp Tool Instruction Manual

Model: GJ671BL-1P-US | Brand: VCELINK

INTRODUCTION

This manual provides detailed instructions for the VCELINK RJ45 Crimp Tool (Model GJ671BL-1P-US). This versatile all-in-one tool is designed for crimping various Ethernet and telephone connectors, including Cat5, Cat5e, Cat6, Cat6A, Cat7 RJ45 connectors (both pass-through and non-pass-through, shielded and unshielded), as well as RJ11 and RJ12 connectors. It features integrated cutting and stripping functions for efficient cable termination.

PRODUCT OVERVIEW AND SETUP

Familiarize yourself with the components and basic setup of your VCELINK crimp tool.

All-in-one Pass-through RJ45 Crimping Tool



Figure 1: Overview of the VCELINK RJ45 Crimp Tool, highlighting its various components including the RJ45 crimper, RJ11/RJ12 crimper, metal clip crimper, cutter, stripper, lock button, knob adjustment, and color-coded wiring guide.

Tool Components:

- **RJ45 Crimper:** For standard 8P8C Ethernet connectors.
- **RJ11/RJ12 Crimper:** For 6P4C/6P6C telephone connectors.
- **Cutter:** Integrated blade for trimming excess wires after pass-through.
- **Stripper:** For removing the outer jacket of Ethernet cables.
- **Knob Adjustment:** Allows switching between crimping modes for different connector types (e.g., Cat7 fully enclosed

plugs vs. Cat6 plugs with strain latches).

- **Lock Button:** For compact storage and safety.
- **Color-coded Guide:** Printed on the tool for T568A and T568B wiring standards.

Using the Lock Button:

The tool features a lock button for secure storage and to keep the handles closed when not in use.

How to use the lock button?

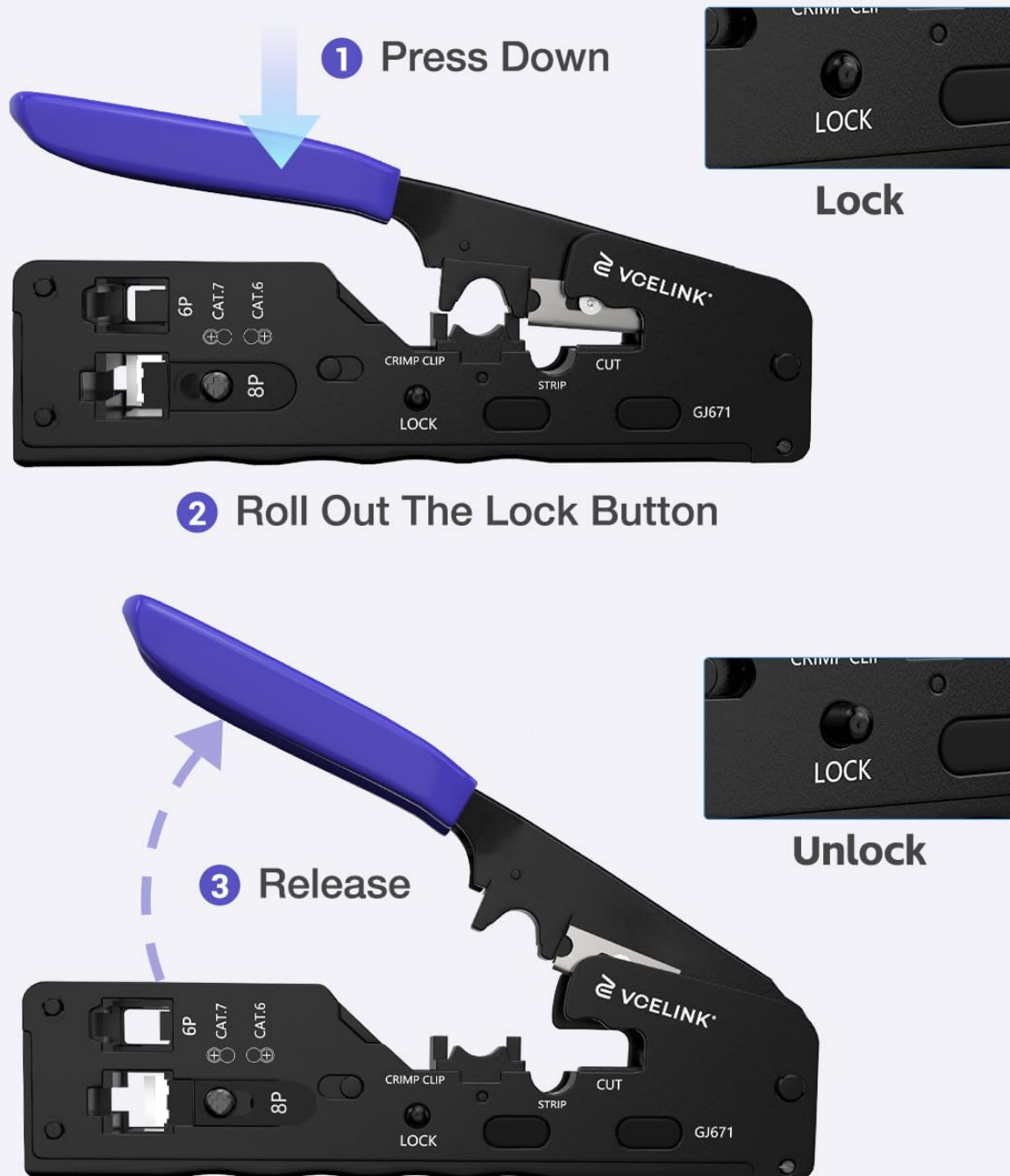


Figure 2: Steps to engage and disengage the lock button. To lock, press the handles together and push the lock button down. To unlock, roll out the lock button and release the handles.

1. **To Lock:** Press the handles together until they are fully closed. Push the small button labeled 'LOCK' downwards to

secure the handles in the closed position.

2. **To Unlock:** Roll the lock button outwards (away from the tool's body) and then release the handles. The tool will spring open, ready for use.

OPERATING INSTRUCTIONS

Follow these steps to properly terminate Ethernet or telephone cables using your VCELINK crimp tool.

Operation Instruction

- 1** Cut and strip the outer jacket of the Ethernet cable.



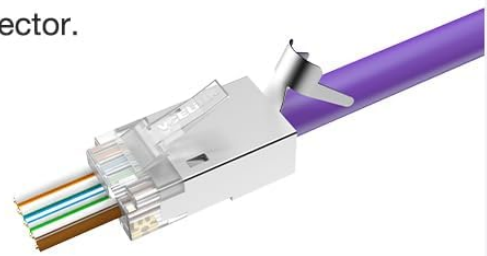
- 2** Arrange the wires according to the T568A/T568B wiring standard.



- 3** Cut the wires in oblique angle.
Take T568B as the example



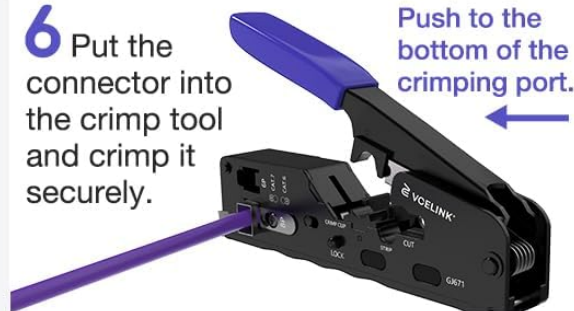
- 4** Thread the wires into the RJ45 connector.



- 5** Change Crimping Model



- 6** Put the connector into the crimp tool and crimp it securely.



- 7** Crimping dovetail clip.



- 8** Finished

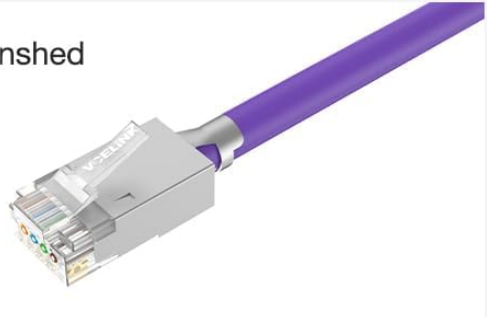


Figure 3: Visual guide for the cable termination process, from stripping the jacket to final crimping.

Cable Termination Process:

- 1. Cut and Strip Outer Jacket:** Use the integrated stripper on the tool to carefully remove approximately 1.18 inches (3mm) of the cable's outer jacket. Ensure not to damage the internal wires.
- 2. Arrange Wires:** Untwist the wire pairs and arrange them according to the desired wiring standard (T568A or T568B). The color-coded guide on the tool can assist you.
- 3. Cut Wires in Oblique Angle:** Trim the arranged wires to an even length, typically about 0.98 inches (2.5 cm) from the jacket edge, using the cutter. An oblique angle cut can sometimes aid insertion.

4. **Thread Wires into RJ45 Connector:** Carefully insert the arranged wires into the RJ45 connector, ensuring each wire slides into its correct pin slot. For pass-through connectors, push the wires completely through the front of the connector.
5. **Adjust Crimping Mode:** Before crimping, ensure the crimping mode knob is set correctly for your connector type. For Cat7 fully enclosed plugs, use the 'CAT7 Mode'. For Cat6 plugs with strain latches or openings, use the 'CAT6 Mode'. For RJ11/RJ12 connectors, use the 6P crimping slot.
6. **Crimp Connector:** Insert the prepared connector into the appropriate crimping port (8P for RJ45, 6P for RJ11/RJ12). Push the connector firmly to the bottom of the crimping port. Squeeze the handles of the tool completely until the connector is securely crimped and, for pass-through connectors, the excess wires are cleanly trimmed by the sharp blade.
7. **Crimp Dovetail Clip (if applicable):** If your connector has a dovetail clip for strain relief (common in Cat6A/Cat7), use the dedicated crimp fix buckle on the tool to secure it.

Demonstration Video:

Your browser does not support the video tag.

Video 1: This official VCELINK video demonstrates the crimping process for both pass-through and non-pass-through RJ45 connectors, as well as RJ11 connectors. It highlights the tool's compact size, sharp cutting blade, and the crimp fix buckle for securing connectors.

MAINTENANCE

Proper maintenance ensures the longevity and optimal performance of your crimp tool.

- **Cleaning:** After each use, wipe down the tool with a clean, dry cloth to remove any debris or wire fragments.
- **Blade Inspection:** Regularly inspect the cutting and stripping blades for sharpness and damage. The blades are replaceable, though spare blades are not included with the tool.
- **Lubrication:** Periodically apply a light machine oil to the pivot points and moving parts to ensure smooth operation.
- **Storage:** Store the tool in a dry environment. Use the lock button to keep the handles closed for compact and safe storage.

TROUBLESHOOTING

Here are solutions to common issues you might encounter.

- **Issue: Strain relief tabs not crimping correctly on thicker cables (Cat6A/Cat7).**
Solution: For some thicker cables, you may need to pre-crimp the strain relief tabs around the cable slightly before inserting into the tool. Then, carefully clock the cable in the crimper to ensure proper alignment with the die, rather than relying solely on the default seating position. This can help prevent the tabs from smashing flat instead of wrapping around the cable.
- **Issue: Lock switch becomes stuck or difficult to operate.**
Solution: Apply a small amount of lubricant (e.g., WD-40 or light machine oil) to the lock mechanism. Work the button back and forth gently to distribute the lubricant and free up any sticking parts. Regular lubrication can prevent this issue.
- **Issue: Wire stripping portion damages internal strands.**
Solution: When using the stripping function, aim to score the outer jacket rather than cutting completely through it. Apply gentle pressure and rotate the cable slightly to score the insulation, then bend the cable to break the scored jacket and pull

it off. This technique minimizes the risk of nicking or cutting the internal wire strands.

SPECIFICATIONS

Key technical specifications for the VCELINK RJ45 Crimp Tool.

Product Size



Figure 4: Product dimensions of the crimp tool, showing its compact size.

Feature	Detail
Brand	VCELINK
Model Number	GJ671BL-1P-US
Color	Blue
Item Weight	322.6 Grams (11.4 ounces)
Handle Material	Metal
Grip Type	Ergonomic
Product Dimensions	5.31 x 1.02 x 2.36 inches
Country of Origin	China
Compatible Connectors	RJ45 (Cat5, Cat5e, Cat6, Cat6A, Cat7 Pass-Through/Non-Pass-Through, Shielded/Unshielded), RJ11, RJ12

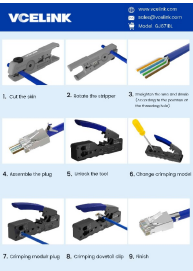
WARRANTY AND SUPPORT

For warranty information, technical support, or any inquiries regarding your VCELINK RJ45 Crimp Tool, please contact VCELINK customer service directly. Refer to the product packaging or the official VCELINK website for the most up-to-date contact details and warranty terms.

You can also visit the official VCELINK store on Amazon for more products and support:[VCELINK Amazon Store](#).




© 2023 VCELINK. All rights reserved.

Related Documents - GJ671BL-1P-US



[VCELINK GJ671BL RJ45 Crimping Tool Operation Guide](#)

Step-by-step instructions for using the VCELINK GJ671BL crimping tool to assemble RJ45 connectors for network cables, including CAT5 and CAT7.

	<p>VCELINK 2025 Brand Product Brochure</p> <p>Explore the VCELINK 2025 Brand Product Brochure, featuring a comprehensive range of network accessories, hand tools, and brand services. Discover high-quality products designed for professionals and DIY enthusiasts alike, with a focus on innovation and customer satisfaction.</p>
	<p>VCELINK 2025 Brand Product Brochure: Networking Tools & Accessories</p> <p>Explore the comprehensive VCELINK 2025 Brand Product Brochure, featuring a wide range of high-quality networking tools, connectors, cables, wall plates, and audio/video accessories designed for professionals and DIY enthusiasts. Discover solutions for reliable connectivity and efficient installations.</p>
	<p>Lennox Mini-Split Installation Manual for MWHD/MWLD/MWPD Outdoor and MWHD/MWMD Indoor Units</p> <p>This installation manual provides detailed instructions and safety guidelines for installing Lennox Mini-Split systems, including MWHD/MWLD/MWPD outdoor and MWHD/MWMD indoor units. It covers preparation, unit installation, inspection, testing, and option settings.</p>
	<p>Zenty ZT-331 ZT-HDEX-1P 1080P 200ft HDMI Extender User Manual</p> <p>User manual for the Zenty ZT-331 ZT-HDEX-1P, a 1080P 200ft HDMI Single Extender with PoC. Includes key features, package contents, specifications, panel descriptions, connection and operation guide, maintenance, and warranty information.</p>