

ATUMTEK ATYKQ064

ATUMTEK Bluetooth Remote Shutter User Manual

Model: ATYKQ064

1. INTRODUCTION

Thank you for choosing the ATUMTEK Bluetooth Remote Shutter. This compact and portable device is designed to enhance your mobile photography experience by providing convenient remote control for your smartphone camera. With advanced Bluetooth 5.0 technology, it ensures stable and low-latency connectivity, allowing you to capture perfect photos and videos from a distance. This manual will guide you through the setup, operation, and maintenance of your new remote shutter.

2. PRODUCT FEATURES

- Superior Bluetooth 5.0 Connectivity:** Experience ultra-low latency and stable connection with the latest Bluetooth 5.0 technology. No app is required for pairing, and it's compatible with iOS 7.0+ and Android 5.0+ smartphones, ensuring seamless remote photography.
- Long Battery Life:** Equipped with a 50mAh rechargeable battery, this Bluetooth remote allows you to take more than 15,000 photos on a full charge. The convenient Type-C charging port (5V/0.11A) ensures quick recharges when needed.
- Compact and Portable Design:** Measuring just 53.8 x 16.23 x 7.88mm and weighing only 5g, this mini remote is easy to carry and store. Its sleek, carbon fiber design adds a touch of elegance, making it the perfect accessory for any on-the-go photographer.
- Extended Remote Range:** Capture perfect shots from a distance! With an effective remote range of over 10 meters, you can comfortably take group photos, selfies, or landscape shots without being restricted by proximity.
- Durable and Long-Lasting Buttons:** The ABS construction ensures durability, while the button has a lifespan of over 30,000 clicks, providing reliability for countless photography sessions.
- Universal Compatibility:** Designed to work with both iOS and Android systems, this remote shutter is compatible with iPhones and Android smartphones running iOS 7.0+ or Android 5.0+.

3. PACKAGE CONTENTS

Please check the package to ensure all items are present:

- ATUMTEK Bluetooth Remote Shutter (Model: ATYKQ064)
- USB-C Charging Cable
- User Manual



Figure 3.1: Package Contents

4. GETTING STARTED

4.1 Charging the Remote Shutter

The remote shutter comes with a built-in rechargeable 50mAh battery. Before first use, or when the indicator light is dim, charge the device using the provided USB-C cable.

1. Connect the USB-C end of the cable to the charging port on the remote shutter.
2. Connect the USB-A end of the cable to a USB power source (e.g., computer USB port, wall adapter, power bank).
3. The indicator light will show charging status (specific color/behavior not detailed, assume it turns off or changes color when fully charged).
4. A full charge allows for over 15,000 photos.



Figure 4.1: Remote Shutter with USB-C Cable

High-End Carbon Fiber Design



Figure 4.2: USB-C Charging Options

4.2 Pairing with Your Smartphone

The remote shutter uses Bluetooth for wireless connection. Follow these steps to pair it with your device:

1. **Step 1:** Press and hold the button on the remote shutter for 3 seconds. The green indicator light will flash, indicating it's in pairing mode.
2. **Step 2:** On your smartphone, go to Settings and turn on Bluetooth. Search for available devices and select "ATUMTEK" from the list.
3. **Step 3:** Once paired successfully, the green light on the remote will remain steady.
4. **Step 4:** To turn off the remote, press and hold the button for 3 seconds.

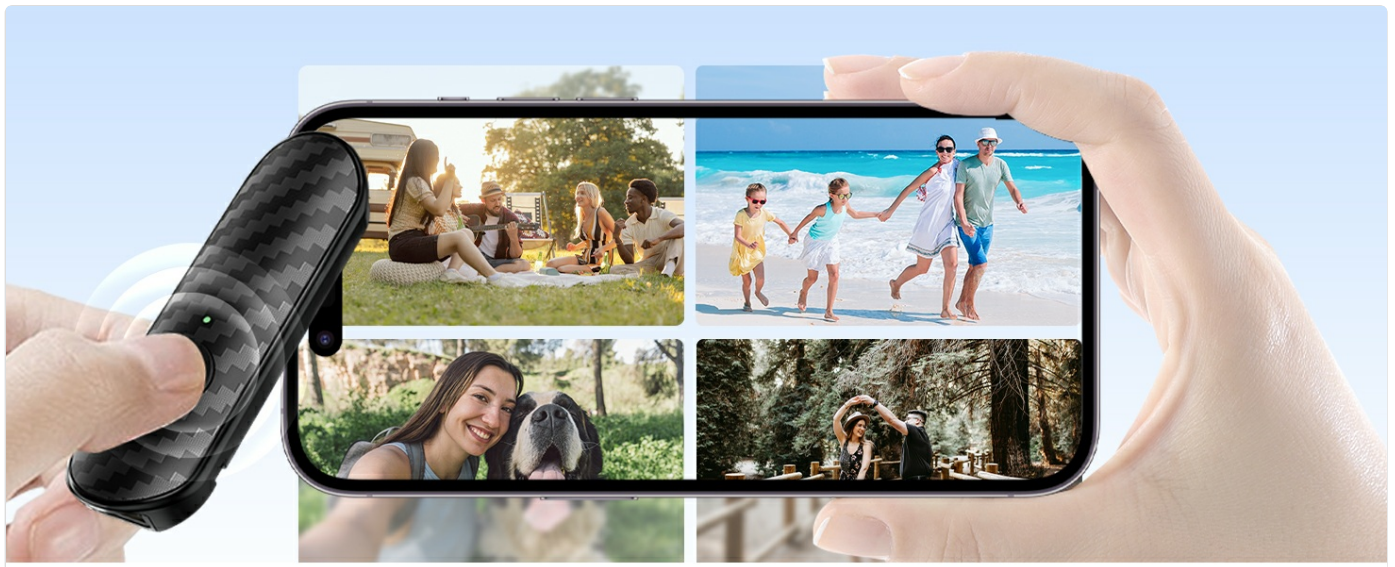


Figure 4.3: Pairing Steps

USB-C Powered

Rechargeable battery /Charged without effort / USB charging cable included



Figure 4.4: Remote Shutter in Use

5. OPERATING INSTRUCTIONS

Once paired, the ATUMTEK Bluetooth Remote Shutter is ready for use with your smartphone's camera application.

1. Ensure your smartphone's camera app is open.
2. Position your smartphone as desired (e.g., on a tripod, selfie stick).
3. Press the camera button on the remote shutter to capture a photo or start/stop video recording. The remote supports both photo and video modes.
4. The effective remote range is over 10 meters (33 feet), allowing for flexible shooting angles and group photos.



Figure 5.1: Photo and Video Mode Availability

Compact and Portable



Figure 5.2: Extended Remote Range

Your browser does not support the video tag.

Video 5.1: Official product video demonstrating the features and usage of the ATUMTEK Bluetooth Remote Shutter.

6. COMPATIBILITY

The ATUMTEK Bluetooth Remote Shutter is designed for wide compatibility with various smartphones and operating systems.

- **iOS Devices:** Compatible with iOS 7.0 and above, including various iPhone models (e.g., iPhone 15, 14, 13, 12, 11, X, SE, 8, 7, 6s) and iPads.
- **Android Devices:** Compatible with Android 5.0 and above, including various Samsung Galaxy (S, Note, Z Flip series), Google Pixel, Huawei, Sony Xperia, Motorola, and OnePlus models.
- **Perfect Fit with ATUMTEK Selfie Stick Tripods:** Designed to pair seamlessly with ATUMTEK ATSS002 & ATSS052 Series Selfie Stick Tripods (e.g., ATSS029, ATSS055, ATSS099, ATSS128, ATSS002, ATSS031, ATSS087, ATSS052, ATSS056, ATSS067, ATSS127).

Cutting-edge Bluetooth 5.0 Technology



Fast connection



Zero-delay



Stable connection



Up to 33ft/10m

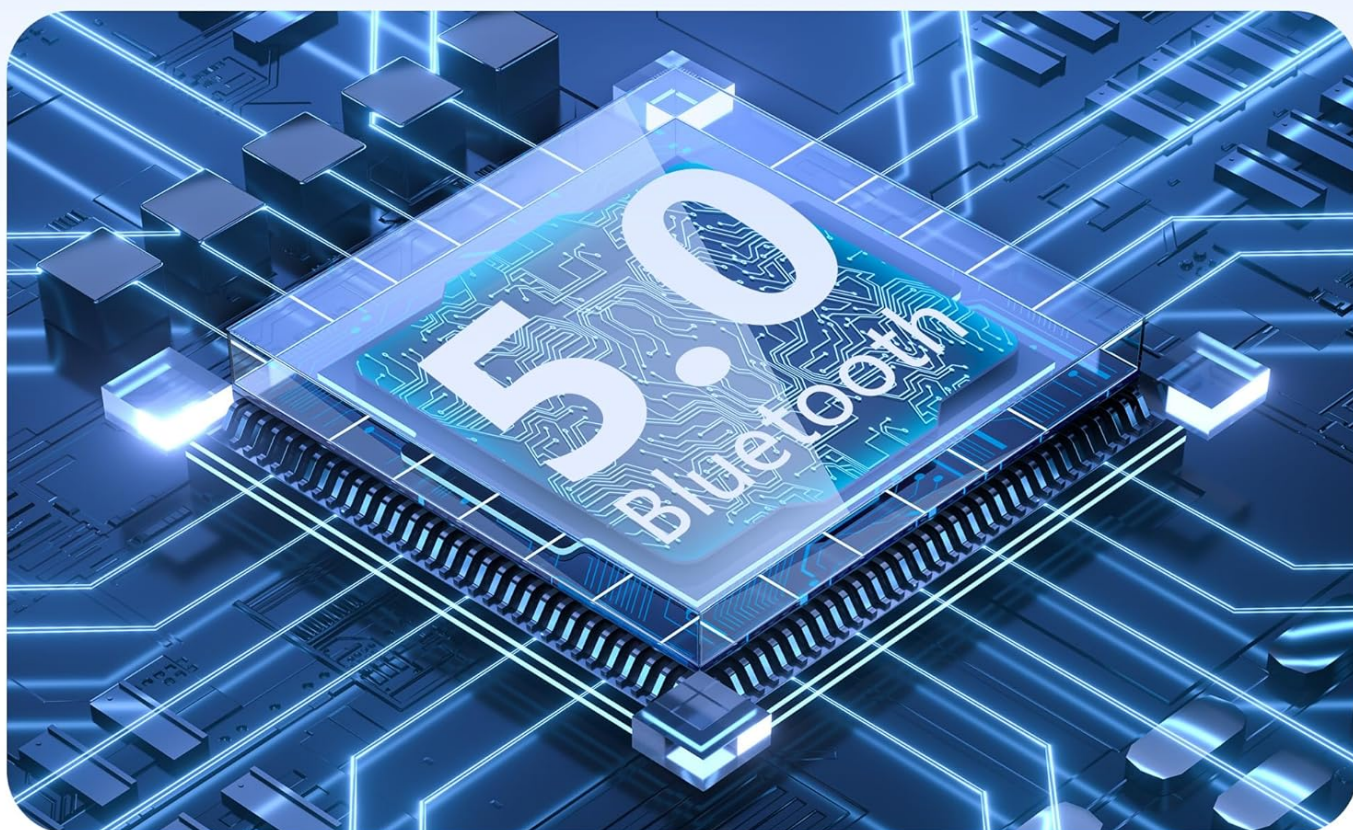


Figure 6.1: Wide Smartphone Compatibility



Figure 6.2: Compatibility with ATUMTEK Selfie Stick Tripods

7. SPECIFICATIONS

Feature	Detail
Model Number	ATYKQ064
Connectivity	Bluetooth 5.0
Battery Capacity	50mAh Lithium Polymer (Rechargeable)
Charging Port	USB Type-C (5V/0.11A)
Battery Life	Over 15,000 photos per full charge
Remote Range	Over 10 meters (33 feet)
Button Lifespan	Over 30,000 clicks
Dimensions	53.8 x 16.23 x 7.88mm (2.12 x 0.64 x 0.31 inches)
Weight	5g (0.176 ounces)
Material	ABS (with Carbon Fiber Design)
Color	Black
Compatible OS	iOS 7.0+ and Android 5.0+

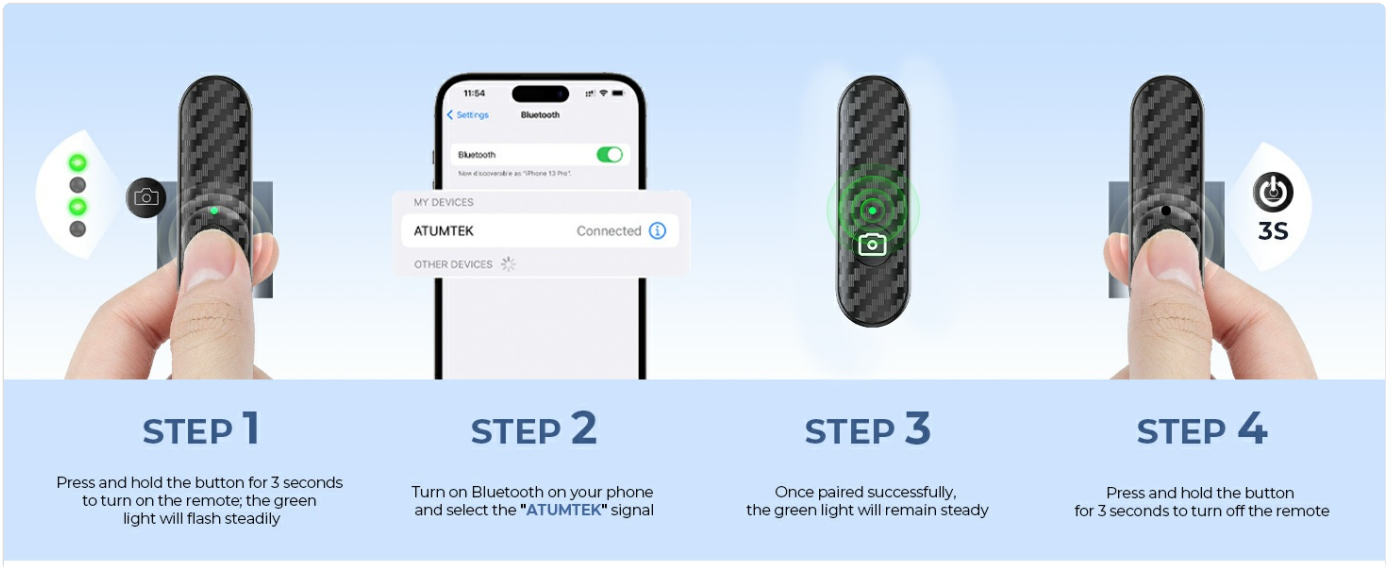


Figure 7.1: Product Dimensions and Weight

8. CARE AND MAINTENANCE

- Keep the remote shutter dry. Do not expose it to moisture or liquids.
- Clean the device with a soft, dry cloth. Avoid using harsh chemicals or abrasive materials.
- Store the remote in a cool, dry place when not in use.
- Avoid extreme temperatures, as this can affect battery life and device performance.
- Do not attempt to disassemble or repair the device yourself. This will void the warranty.

9. TROUBLESHOOTING

Problem	Possible Solution
Remote not pairing.	<ul style="list-style-type: none"> ◦ Ensure the remote is fully charged. ◦ Make sure Bluetooth is enabled on your smartphone. ◦ Turn off and on the remote shutter. ◦ Forget the device in your phone's Bluetooth settings and try pairing again. ◦ Ensure your phone's OS is iOS 7.0+ or Android 5.0+.
Remote not taking photos/videos.	<ul style="list-style-type: none"> ◦ Check if the remote is successfully paired (steady green light). ◦ Ensure your camera app is open and active. ◦ Some camera apps may require specific settings for external shutter control. Check your app's settings. ◦ Restart your smartphone and the remote shutter.
Short battery life.	<ul style="list-style-type: none"> ◦ Ensure the remote is fully charged before use. ◦ Avoid leaving the remote on when not in use; turn it off to conserve battery. ◦ Extreme temperatures can affect battery performance.

10. WARRANTY AND SUPPORT

ATUMTEK offers warranty coverage for all its branded products when purchased through authorized channels. If you encounter any issues or have questions regarding your ATUMTEK Bluetooth Remote Shutter, please do not hesitate to reach out to our dedicated support team for assistance.

Email Support: support@atumtek.com

For more information and product updates, please visit the official ATUMTEK store: [ATUMTEK Store on Amazon](#)