

GOAOFEOEI GO-WIFICAM01

GOAOFEOEI 1080P WiFi Home Security Camera User Manual

Brand: GOAOFEOEI | **Model:** GO-WIFICAM01

INTRODUCTION

This manual provides detailed instructions for the installation, operation, and maintenance of your GOAOFEOEI 1080P WiFi Full Metal Case Wired Home Security Camera. Please read this manual thoroughly before using the product to ensure proper functionality and safety. This camera system is designed for outdoor use, offering robust surveillance with advanced features like two-way audio, motion detection, and night vision.



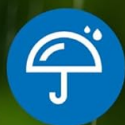
Image: Two GOAOFOEOI 1080P WiFi Full Metal Case Wired Home Security Cameras with their respective power adapters.

PRODUCT FEATURES

- **Full Metal Case & Weatherproof:** Constructed with a durable full metal housing for efficient heat dissipation and enhanced safety. The camera is IP65 waterproof, designed to withstand temperatures from -4°F to 140°F (-20°C to 60°C), making it suitable for various outdoor weather conditions.

Weather Resistance Metal Housing

Metal Made Outer Casing



Waterproof
level IP65



Working Temperature:
-15° + 60 °



Working
humidity <90%

Image: The GOAOFEOI security camera mounted outdoors, demonstrating its weather resistance and durable metal casing in rainy conditions.

- **Smart Motion Detection & Real-time Alerts:** Customize monitoring areas to reduce false alarms. Receive real-time alerts and immediate notifications on your device. Snapshots and 10-second video clips are automatically saved to an SD card or cloud storage. The camera utilizes a US-based server for quick response and low latency.



Image: A smartphone screen showing a motion detection alert from the GOAOFEOI security camera, with a person highlighted in a red box indicating the monitored area.

- **Secure Storage Options & Alexa Compatibility:** Supports micro SD cards up to 128GB (not included) for local storage. A 30-day free cloud service is available upon initial connection. Data and privacy are protected by robust financial encryption technology. Seamlessly integrate with Amazon Alexa to display the live camera feed on compatible Echo Show devices.



Image: The GOAOFEOI security camera positioned next to an Amazon Echo Show, demonstrating its compatibility with Alexa for viewing live feeds.

- **High-Definition Clarity & Night Vision:** Experience crystal-clear 1080P Full HD visuals with a 120° wide-angle view and a powerful 2MP lens. Advanced infrared LED lights provide night vision up to 40 feet in darkness. Note: Compatible with 2.4GHz Wi-Fi networks only (not 5.0GHz).

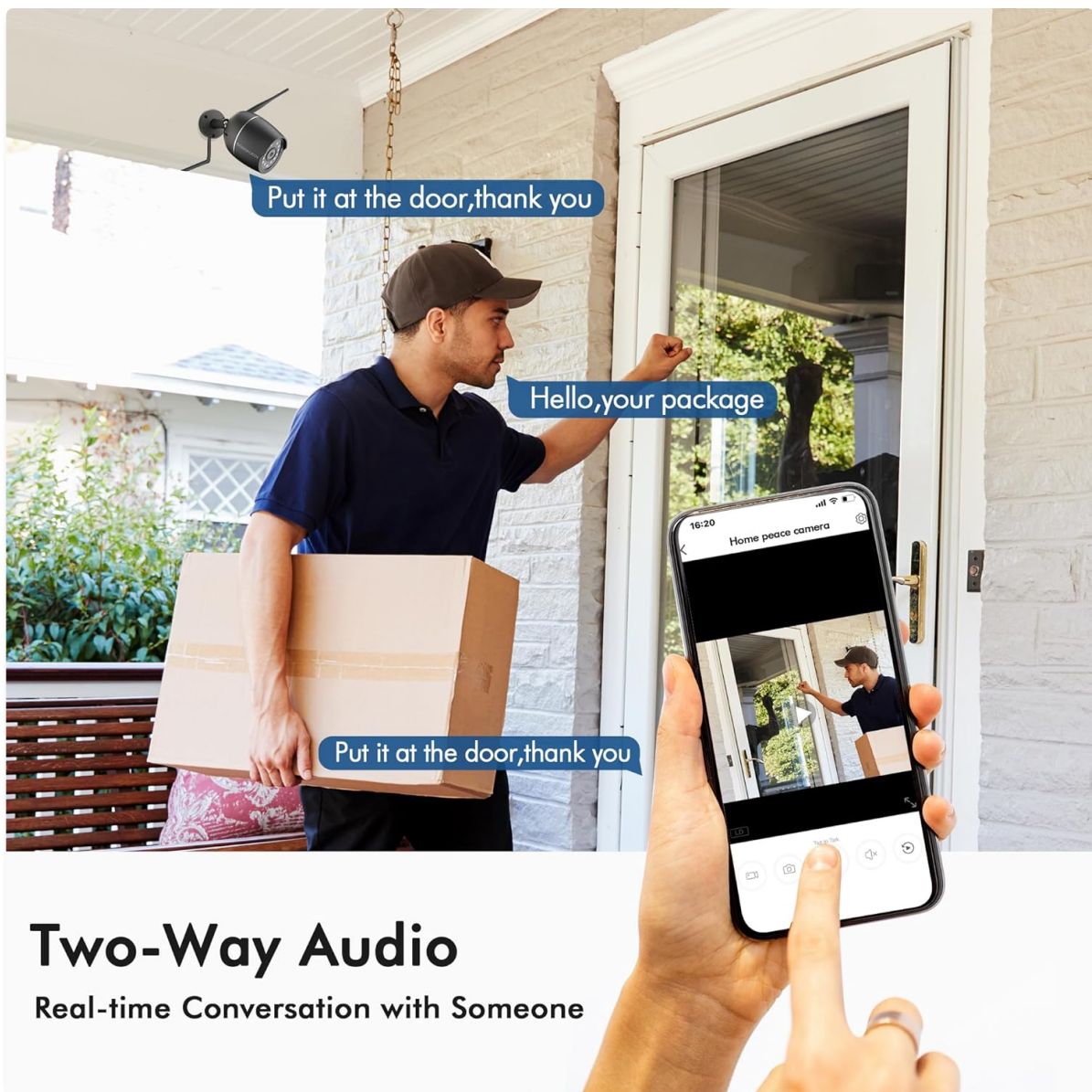
1080P HD Day&Night Vision

120° Wide Angle IR Distance 40ft



Image: A split view illustrating the camera's 1080P HD clarity in both daytime and infrared night vision, showing a clear view up to 40 feet in darkness.

- **Two-Way Communication & Remote Accessibility:** Features a built-in noise cancellation speaker and microphone for clear two-way audio. Communicate with family members, delivery personnel, or address unexpected visitors remotely. Multiple accounts can support simultaneous video viewing, keeping you connected to your home.



Two-Way Audio

Real-time Conversation with Someone

Image: A person interacting with a delivery driver at their front door using the two-way audio feature of the GOAOFEOI security camera, as seen on a smartphone.

PACKAGE CONTENTS

Verify that all items are present in your package:

- Security Camera (x2)
- Mounting Kit (x2)
- Power Supply (x2)
- Antenna (x2)
- Operation Instruction Manual (x1)

Easy to Set Up & Use

Packing list:

1. Camera*2
2. Mounting kit*2
3. Power Supply *2
4. Antenna*2
5. Operation instruction*1



Image: A person installing the GOAOFEOEI security camera on an exterior wall, alongside a visual representation of the package contents.

SETUP GUIDE

1. **Prepare for Installation:** Choose a suitable outdoor location for your camera, ensuring it is within range of your 2.4GHz Wi-Fi network. The camera requires a plug-in power source.
2. **Download the App:** Search for the recommended control app (e.g., 'meShare' as indicated in some product reviews) on your smartphone's app store (iOS or Android) and install it.
3. **Power On the Camera:** Connect the camera to the power supply using the provided adapter. The camera will power on and enter pairing mode.
4. **Add Device in App:** Open the app and follow the on-screen instructions to add a new device. This typically involves scanning a QR code on the camera or its packaging, and then connecting the camera to your 2.4GHz Wi-Fi network by entering your Wi-Fi password.
5. **Mount the Camera:** Once the camera is successfully connected and functioning, use the provided mounting kit to securely attach the camera to your chosen wall or surface. Adjust the camera angle for optimal viewing coverage (120° wide-angle).
6. **Install Micro SD Card (Optional):** If you wish to use local storage, insert a micro SD card (up to 128GB, not included) into the designated slot on the camera. Refer to the app for formatting the SD card if necessary.

OPERATING INSTRUCTIONS

- **Live View:** Open the app on your smartphone to access the live video feed from your camera. You can view the 1080P Full HD stream in real-time.
- **Two-Way Audio:** Use the microphone and speaker icons within the app to engage in two-way communication. Press and hold the microphone button to speak, and release to listen.
- **Motion Detection Alerts:** Configure motion detection zones and sensitivity settings within the app. When motion is detected, you will receive instant notifications on your smartphone, along with snapshots and short video clips.
- **Reviewing Recordings:** Access recorded video clips and snapshots through the app. Recordings are stored on your installed micro SD card or in the cloud (if subscribed to cloud service).
- **Alexa Integration:** Enable the camera's skill in the Alexa app. You can then use voice commands (e.g., "Alexa, show me the front door camera") to view the live feed on compatible Amazon Echo Show

devices.

- **Family Sharing:** The app supports sharing camera access with multiple accounts, allowing family members to view the live feed simultaneously.

MAINTENANCE

- **Cleaning:** Periodically clean the camera lens with a soft, dry cloth to ensure clear image quality. Avoid using harsh chemicals or abrasive materials.
- **Weather Protection:** While the camera is IP65 weatherproof, ensure its mounting location provides adequate protection from extreme weather conditions to prolong its lifespan.
- **Firmware Updates:** Regularly check the app for available firmware updates. Keeping your camera's firmware up-to-date ensures optimal performance, security, and access to new features.
- **Power Supply:** Ensure the power connection is secure and protected from water exposure.

TROUBLESHOOTING

- **Camera Offline:** Check the power connection and ensure your Wi-Fi network is active and stable. Verify the camera is within range of your 2.4GHz Wi-Fi router. Restart the camera and your router if necessary.
- **Poor Image Quality:** Ensure the camera lens is clean. Check your Wi-Fi signal strength in the app; a weak signal can affect video quality.
- **Motion Detection Not Working:** Verify that motion detection is enabled in the app and that the detection zones are correctly configured. Adjust sensitivity settings if needed. Ensure there are no obstructions blocking the camera's view.
- **Two-Way Audio Issues:** Check the volume settings on your smartphone and within the app. Ensure there is no excessive background noise interfering with the audio.
- **SD Card Not Recording/Recognized:** Ensure the SD card is inserted correctly and is not full. Try formatting the SD card through the app or on a computer. Use a compatible micro SD card (up to 128GB).
- **Alexa Integration Problems:** Ensure the camera's skill is enabled in the Alexa app and that your Alexa device is properly linked to your camera account.

SPECIFICATIONS

Feature	Specification
Model Name	GO-WIFICAM01
Video Resolution	1080P Full HD (2MP)
Viewing Angle	120 Degrees
Night Vision Range	Up to 40 Feet (Infrared LEDs)
Connectivity	2.4GHz Wi-Fi (IEEE 802.11b/g/n)
Power Source	Corded Electric (Plug-in Power)





Feature	Specification
Weather Resistance	IP65 Waterproof
Operating Temperature	-4°F to 140°F (-20°C to 60°C)
Storage Options	Micro SD Card (up to 128GB, not included), Cloud Storage
Audio	Two-Way Audio with Noise Cancellation
Material	Full Metal Case
Compatibility	Amazon Alexa, Mobile App
Mounting Type	Wall Mount
Item Weight	2.21 pounds (per camera)
UPC	789605570360

WARRANTY AND SUPPORT

For warranty information and detailed support, please refer to the product packaging or contact the manufacturer directly through their official website. Keep your purchase receipt as proof of purchase for any warranty claims.

For technical assistance or further inquiries, please reach out to GOAOFEOEI customer support. Contact details are typically available on the product's official website or within the mobile application.

Related Documents - GO-WIFICAM01

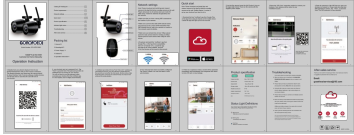
	GOAOFEOEI 1080P WiFi Camera: Quick Start and Operation Guide A comprehensive guide to setting up and using the GOAOFEOEI 1080P WiFi Camera for home security. Learn about network configuration, app usage, product specifications, and troubleshooting.
	GOAOFEOEI GO-WIFICAM01 WiFi Security Camera Operating Instructions Comprehensive operating instructions for the GOAOFEOEI GO-WIFICAM01 WiFi security camera, covering setup, network configuration, troubleshooting, and features like cloud storage and Alexa compatibility.
	GOAOFEOEI 1080P WiFi Camera: Quick Start and Operation Guide A comprehensive guide to setting up and using the GOAOFEOEI 1080P WiFi Camera for home security. Learn about network configuration, app usage, product specifications, and troubleshooting.
	GOAOFEOEI GO-WIFICAM01 WiFi Security Camera Operating Instructions Comprehensive operating instructions for the GOAOFEOEI GO-WIFICAM01 WiFi security camera, covering setup, network configuration, troubleshooting, and features like cloud storage and Alexa compatibility.



[WIFICAM01 Wi-Fi Camera User Manual and FCC Compliance](#)

Official user manual and FCC compliance details for the WIFICAM01 Wi-Fi camera by ShenZhen Shi Bai Rui Hua Ke Ji You Xian Gong Si, covering regulatory information and device operation.

Documents - GOAOFEOEI – GO-WIFICAM01



[GOAOFEOEI 1080P WiFi Camera: Quick Start and Operation Guide](#)

A comprehensive guide to setting up and using the GOAOFEOEI 1080P WiFi Camera for home security. Learn about network configuration, app usage, product specifications, and troubleshooting.

lang:en score:31 filesize: 3.24 M page_count: 1 document date: 2020-12-11

[\[pdf\] Guide Application Guide](#)

2020 12 17 A cdr CH157 Security Cameras 2 Pack GOAOFEOEI 1080P WiFi Full Metal Case for Home Outdoor Waterproof Bullet Camera Two Way Audio Motion Detection Alert SD Card Cloud Compatible with Alexa Black Count of 1 GO WIFICAM01 Application Guide B094V7G8C2 B08LMLN5YH

B08YJKLQJH B09DKKX3Z 91QTG59NpAL m media amazon images l

Home Live 1 LD Tap to talk 2 3 4 5 6 1 Change the video resolution HD 1080P /LD 2 Click here to start recording until you exit the device preview 3 Click here to take a screenshot, and there will ask if you want to save it in your phone 4 Press and hold this button and you can speak to oth...

lang:en score:22 filesize: 1013.71 K page_count: 1 document date: 2020-12-17

