

symcode MJ-X5-2D

Symcode MJ-X5-2D Bluetooth Wireless Barcode Scanner User Manual

Model: MJ-X5-2D

[Introduction](#)

[Package Contents](#)

[Setup](#)

[Operating Modes](#)

[Supported Barcodes](#)

[Battery & Charging](#)

[Maintenance](#)

[Troubleshooting](#)

[Specifications](#)

[Support](#)

1. INTRODUCTION

This manual provides detailed instructions for the Symcode MJ-X5-2D Bluetooth Wireless Barcode Scanner. It covers product features, setup procedures, operating modes, maintenance guidelines, and troubleshooting tips to ensure optimal performance and longevity of your device. Please read this manual thoroughly before using the scanner.

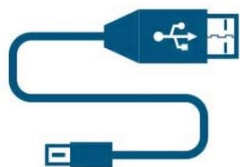
2. PACKAGE CONTENTS

Verify that all items listed below are present in your package:

- Symcode MJ-X5-2D Barcode Scanner
- USB Charging/Data Cable
- 2.4G Wireless USB Dongle
- User Guide

Plug & Play

USB Wireless Dongle or USB Wired Connection



USB Wired Connection



Bluetooth



2.4GHz Wireless Dongle



PC



Laptop



Tablet



Phone



Image: Contents of the Symcode MJ-X5-2D Barcode Scanner package, showing the scanner unit, a USB cable, a 2.4G wireless dongle, and the printed user guide.

3. SETUP

3.1 Initial Charging

Before first use, fully charge the scanner. Connect the scanner to a USB power source using the provided USB cable. A full charge typically takes approximately 2 hours and provides up to 5 hours of continuous operation.

Long Transmission Distance



Image: The scanner next to a battery icon, illustrating the charging process and battery capacity. The scanner features a 650mAh rechargeable lithium-ion battery.

3.2 Connecting the Scanner

The Symcode MJ-X5-2D scanner offers multiple connectivity options:

- **USB Wired Connection:** Connect the scanner directly to your computer using the USB cable. The scanner will function as a plug-and-play device.
- **2.4G Wireless Connection:** Insert the 2.4G USB dongle into your computer's USB port. The scanner will automatically pair with the dongle. This mode offers a barrier-free transmission distance of up to 150m (492ft) and up to 30m (98ft) in a barrier environment.
- **Bluetooth Connection:** Enable Bluetooth on your host device (PC, laptop, tablet, smartphone). Put the scanner into Bluetooth pairing mode (refer to the specific pairing instructions in the included user guide). Select the scanner from your device's Bluetooth list to connect. Bluetooth offers a barrier-free transmission distance of up to 50m (164ft) and up to 15m (49ft) in a barrier environment.

After 2 hours fully charged, 650mAh rechargeable battery can continuously work for 5 hours



Image: Connectivity options for the scanner, including USB wired, Bluetooth, and 2.4G wireless dongle, compatible with PCs, laptops, tablets, and phones.



Image: Transmission range capabilities for the 2.4GHz Wireless and Bluetooth connections. The 2.4GHz wireless mode offers up to 150m (492ft) barrier-free and 30m (98ft) with barriers. Bluetooth offers up to 50m (164ft) barrier-free and 15m (49ft) with barriers.

4. OPERATING MODES

The scanner supports two primary data uploading modes:

- **Instant Upload Mode:** In this mode, scanned barcode data is immediately transmitted to your connected device. This is suitable for real-time data entry.
- **Storage Mode:** The scanner can store up to 50,000 barcodes in its internal 16MB memory. Data is saved internally and can be uploaded to your device later when needed. This mode is ideal for inventory tasks where an immediate connection is not always available.

2 Uploading Modes

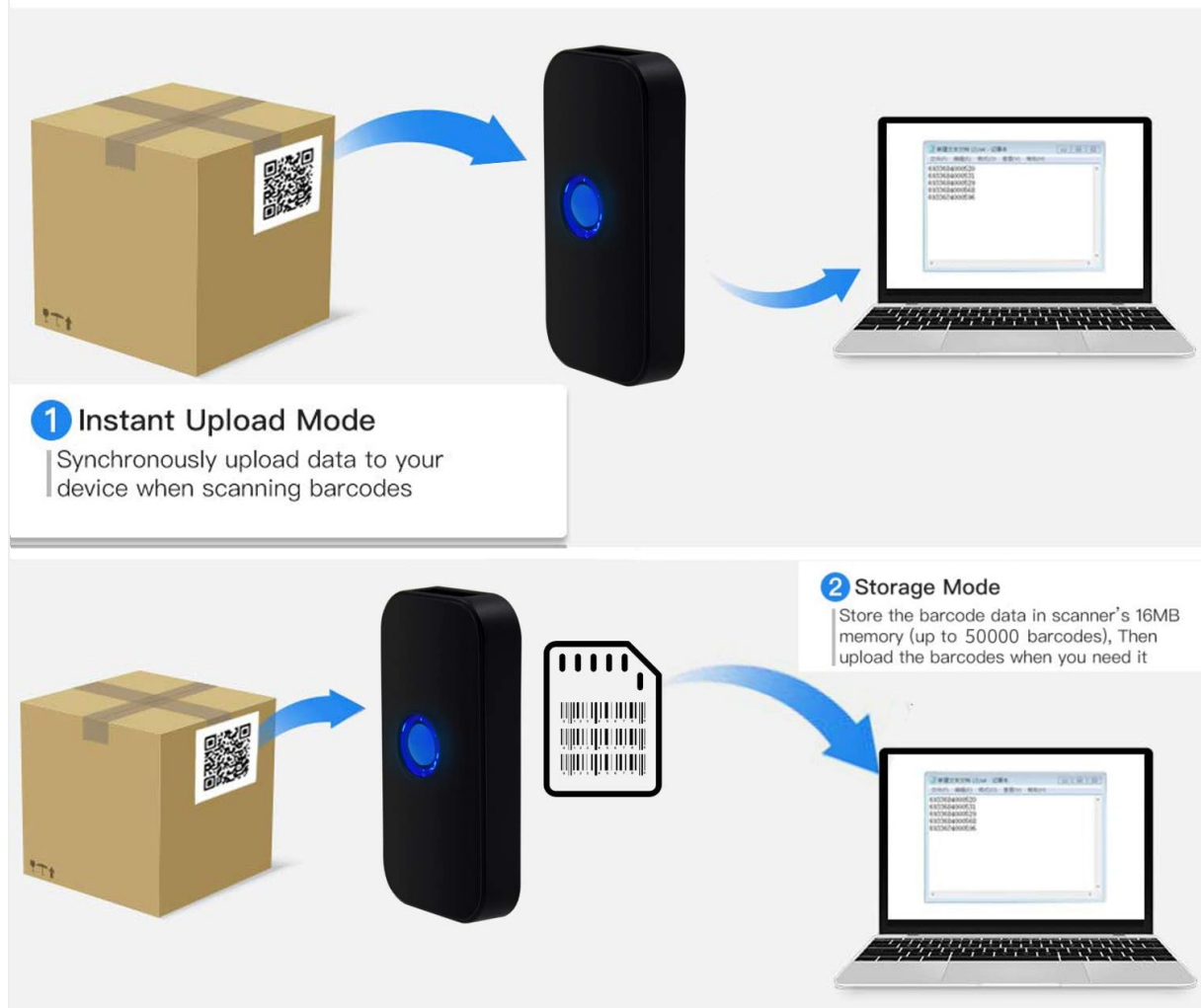


Image: Visual representation of the two data uploading modes. Instant Upload Mode sends data synchronously upon scanning, while Storage Mode saves up to 50,000 barcodes in 16MB memory for later upload.

5. SUPPORTED BARCODES

The Symcode MJ-X5-2D scanner is capable of reading both 1D and 2D digital and printed barcodes:

- **1D Barcodes:** Code 128, EAN-13, EAN-8, Code 39, Code 93, UPC-A, UPC-E, Codabar, Interleaved 2 of 5, ISBN, GS1 DataBar, Matrix 2 of 5, Code 11, Industrial 2 of 5, MSI.
- **2D Barcodes:** Data Matrix, PDF417, QR code, Aztec, Maxicode, Hanxin.

2D & 1D Digital/Printed Barcodes



1D: Code 128, EAN-13, EAN-8, Code 39, Code 93, UPC-A, UPC-E, Codabar, Interleaved 2 of 5, ISBN, GS1 Databar, Matrix 2 of 5, Code 11, Industrial 2 of 5, MSI

2D: Data Matrix, PDF417, QR code, Aztec, Maxicode, Hanxin 汉信码

Image: The scanner demonstrating its ability to read various 1D and 2D barcodes, including QR codes, from digital displays and printed labels.

6. MAINTENANCE

To ensure the longevity and optimal performance of your scanner, follow these maintenance guidelines:

- **Cleaning:** Use a soft, dry cloth to clean the scanner's exterior. For the scanning window, use a lint-free cloth lightly dampened with a mild, non-abrasive cleaner. Avoid harsh chemicals or abrasive materials.
- **Storage:** Store the scanner in a cool, dry place away from direct sunlight and extreme temperatures.
- **Battery Care:** Avoid fully discharging the battery frequently. If storing for extended periods, charge the battery to about 50% and recharge every few months.
- **Protection:** Protect the scanner from drops and impacts.

7. TROUBLESHOOTING

If you encounter issues with your Symcode MJ-X5-2D scanner, refer to the following common problems and solutions:

- **Scanner not turning on:** Ensure the battery is charged. Connect the scanner to a power source using the USB cable.
- **Scanner not connecting to device:**
 - For USB wired: Check the cable connection.

- For 2.4G Wireless: Ensure the USB dongle is properly inserted and recognized by your computer.
- For Bluetooth: Confirm Bluetooth is enabled on your device and the scanner is in pairing mode. Re-pair if necessary.

- **Scanner not reading barcodes:**

- Ensure the barcode is clean, undamaged, and within the scanner's reading range.
- Check if the barcode type is supported by the scanner.
- Verify that the scanner's lens is clean.

- **Incorrect characters or unexpected behavior:** This can sometimes occur with certain host devices or software configurations. Try resetting the scanner to factory defaults (refer to the full user guide for specific instructions). Ensure your device's input language settings are compatible.

- **Scanner beeps/flashes 5 times and shuts off:** This indicates a potential internal error or low battery. Try fully charging the device. If the issue persists, a factory reset might be required. Consult the full user guide for reset procedures.

If problems persist after attempting these solutions, please contact Symcode customer support.

8. SPECIFICATIONS

Brand	symcode
Model Number	MJ-X5-2D
Connectivity Technology	Bluetooth, 2.4G Wireless, USB
Compatible Devices	Smartphone, PC, Laptop, Tablet
Power Source	Battery Powered
Battery Composition	Lithium-ion
Rechargeable Battery	Yes
Color	Scanner QR 2D (Black)
UPC	791533381758

9. WARRANTY AND SUPPORT

For warranty information, technical support, or service inquiries, please refer to the contact details provided in the original product packaging or visit the official Symcode website. Keep your purchase receipt as proof of purchase for warranty claims.