

## artfone artfone S401

# artfone S401 3G/2G Unlocked Senior Flip Cell Phone User Manual

Model: artfone S401

## 1. INTRODUCTION

This manual provides essential information for the safe and efficient use of your artfone S401 3G/2G Unlocked Senior Flip Cell Phone. Please read it thoroughly before using the device to ensure proper operation and to understand all features.

## 2. PACKAGE CONTENTS

Upon opening the package, please verify that all items are present and in good condition:

- artfone S401 Flip Cell Phone
- Charging Cradle
- Power Adapter
- USB Cable
- Battery (Lithium Ion)
- User Manual (this document)

## 3. PHONE OVERVIEW

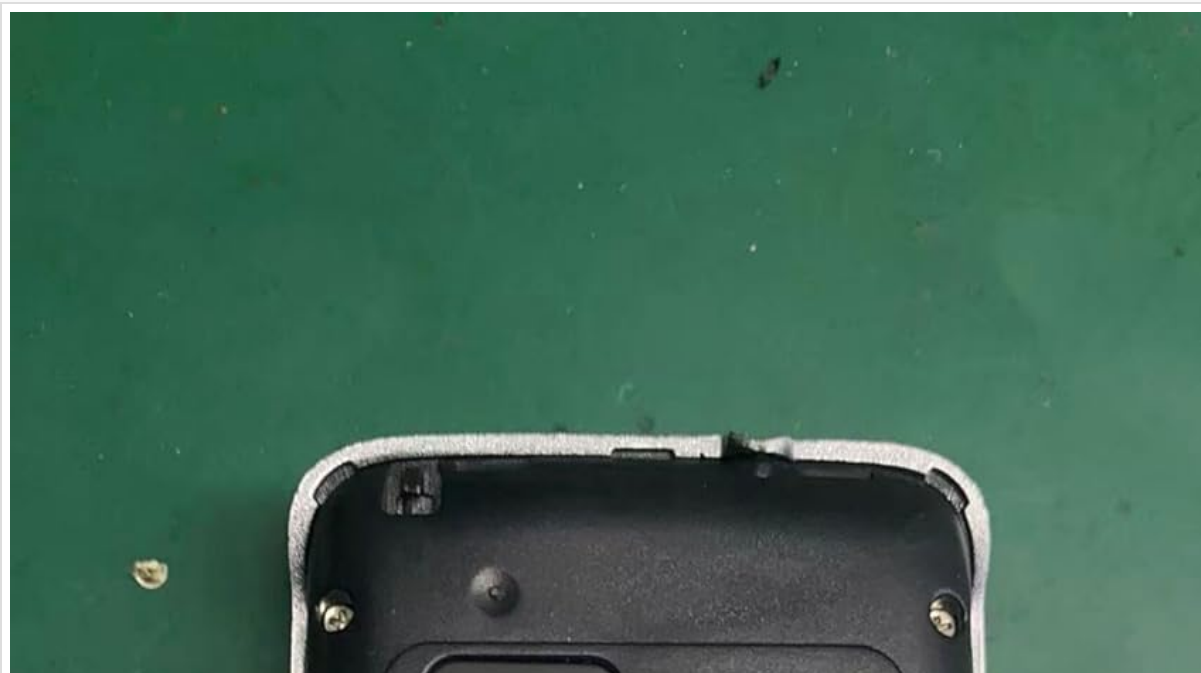
Familiarize yourself with the physical components and interface of your artfone S401.



**Figure 3.1:** artfone S401 flip phone securely placed in its charging cradle, with the phone in a closed position. The cradle provides a stable base for charging.



**Figure 3.2:** The artfone S401 flip phone shown in an open position, revealing the large, easy-to-read keypad. The phone is positioned next to its charging cradle, illustrating its design.





**Figure 3.3:** Rear view of the artfone S401 with the battery cover removed, exposing the battery compartment, SIM card slot, and microSD card slot for memory expansion.

Two side buttons and  
SOS,tailored design for old people



**Figure 3.4:** Side profile of the artfone S401, highlighting the dedicated volume control buttons and the prominent SOS emergency button for quick access to assistance.

# User-friendly UI interface

## Excellent operation interface



Figure 3.5: Examples of the artfone S401's user-friendly interface, displaying various menu screens such as the main menu, call history, messages, SOS settings, calculator, and calendar.

## 4. SETUP

### 4.1. Installing the SIM Card

1. Ensure the phone is powered off.
2. Remove the back cover of the phone.
3. Carefully remove the battery.
4. Locate the SIM card slot (refer to Figure 3.3).
5. Insert your 3G/2G compatible SIM card into the slot with the gold contacts facing down and the cut corner aligned as indicated.
6. (Optional) If using a microSD card for additional storage, insert it into the designated slot.

### 4.2. Installing the Battery

1. After inserting the SIM card, place the battery into the battery compartment, ensuring the gold contacts on the battery align with the contacts in the phone.
2. Replace the back cover, pressing gently until it clicks into place.



### 4.3. Charging the Phone

Before first use, fully charge the phone battery.

- **Using the Charging Cradle:** Place the phone into the charging cradle (refer to Figure 3.1). Ensure the phone is seated correctly and the charging indicator appears on the screen.
- **Using the USB Cable:** Connect the USB cable to the phone's charging port and the other end to the power adapter. Plug the adapter into a wall outlet.

A full charge typically takes approximately 2-3 hours. The battery indicator on the screen will show charging status.

## 5. OPERATING INSTRUCTIONS

---

### 5.1. Power On/Off

- **To Power On:** Press and hold the **Power/End Call** button (red button) until the screen lights up.
- **To Power Off:** Press and hold the **Power/End Call** button until the power off options appear, then select "Power off".

### 5.2. Making Calls

1. Open the flip phone.
2. Enter the phone number using the keypad.
3. Press the **Call** button (green button) to initiate the call.
4. To end the call, press the **Power/End Call** button.

### 5.3. Receiving Calls

- When the phone rings, open the flip to answer, or press the **Call** button.
- To reject a call, press the **Power/End Call** button.

### 5.4. Messaging (SMS)

1. From the main menu, navigate to "Messages".
2. Select "Write message" to compose a new SMS.
3. Enter the recipient's number or select from contacts.
4. Type your message using the keypad. Press the **#** key to switch input modes (e.g., ABC, Abc, abc, 123).
5. Press "Send" to transmit the message.

### 5.5. SOS Emergency Function

The SOS button is located on the back of the phone (refer to Figure 3.4). It allows for quick contact with pre-set emergency numbers.

- **Setting SOS Numbers:** Go to **Menu > SOS Setting**. You can set up to 5 emergency contacts.
- **Activating SOS:** Press and hold the **SOS** button for 3-5 seconds. The phone will automatically call the pre-set numbers in sequence until one is answered. It will also send an emergency SMS to these contacts.

### 5.6. Speed Dial

Assign frequently called numbers to specific keys for quick dialing.

- **Setting Speed Dial:** Go to **Menu > Contacts > Options > Speed Dial**. Assign contacts to keys 2-9. Keys A and B can also be assigned.
- **Using Speed Dial:** In standby mode, press and hold the assigned number key (e.g., '2') to dial the corresponding contact.



**Figure 5.7.1:** The dedicated time reporting button on the artfone S401, which announces the current time when pressed.

Press the dedicated **Time Reporting** button (located below the screen, refer to Figure 5.7.1) to hear the current time announced audibly.

## 5.8. Basic Menu Navigation

Use the navigation keys (up, down, left, right) and the **OK** button (center button) to browse through the phone's menu options. The **Back** button typically returns to the previous screen.

## 6. MAINTENANCE

- Keep the phone dry. Moisture can damage electronic circuits.
- Do not expose the phone to extreme temperatures. High temperatures can shorten the life of electronic devices and warp or melt certain plastics.
- Do not use harsh chemicals, cleaning solvents, or strong detergents to clean the phone. Wipe it with a soft, damp cloth.
- Handle the phone with care. Do not drop, knock, or shake it. Rough handling can break internal circuit boards and fine mechanics.
- Only use original or approved accessories. Unauthorized accessories may damage the phone or void the



warranty.

## 7. TROUBLESHOOTING

Problem	Possible Cause / Solution
Phone does not power on.	Battery is depleted. Charge the phone. Battery is not installed correctly. Reinstall the battery.
Cannot make or receive calls.	SIM card not installed or incorrectly installed. Check SIM card. No network signal. Move to an area with better reception. SIM card is not activated or has no credit/plan. Contact your service provider.
Poor call quality.	Weak network signal. Obstructions between phone and network tower. Speaker/microphone blocked. Clean gently.
Phone freezes or responds slowly.	Restart the phone by powering it off and on again. Remove and reinsert the battery if a normal restart is not possible.
SOS function not working.	SOS numbers not set. Ensure emergency contacts are configured in the SOS settings. No network signal.
Charging issues.	Charging cable or adapter is faulty. Try a different one. Charging port is dirty or damaged. Phone not correctly seated in charging cradle.

## 8. SPECIFICATIONS

Feature	Detail
Model Number	artfone S401
Network Compatibility	3G/2G (Compatible with AT&T and other carriers using AT&T network)
Display Size	2.4 Inches
Display Resolution	240 x 320
RAM	128 MB
Memory Storage Capacity	128 MB (expandable via microSD, not included)
Battery Type	Lithium Ion
Battery Capacity	3000 Milliamp Hours
Phone Talk Time	Up to 5 Hours
Connectivity	Bluetooth, USB
Audio Jack	3.5 mm
Form Factor	Flip
Item Weight	4.5 ounces (128 Grams)

Feature	Detail
Dimensions	5.12 x 4.65 x 2.24 inches (Package)

## 9. WARRANTY INFORMATION

artfone products are designed and manufactured to the highest quality standards. This product is covered by a limited warranty from the date of purchase. Please refer to the warranty card included in your package for specific terms and conditions, or visit the official artfone website for detailed warranty information.

The warranty typically covers manufacturing defects and malfunctions under normal use. It does not cover damage caused by misuse, accidents, unauthorized modifications, or normal wear and tear.




## 10. CUSTOMER SUPPORT




If you encounter any issues or have questions not covered in this manual, please contact artfone customer support. Before contacting support, please have your product model number (artfone S401) and purchase details ready.

For the most up-to-date contact information, please visit the official artfone website or refer to the support details provided in your product packaging.

© 2023 artfone. All rights reserved.

### Related Documents - artfone S401

<div>User Manual for Artfone CS182 Senior Phone</div> <div></div>	<div><a href="#">Artfone CS182 Senior Phone User Manual - Features, Specs, and Operation Guide</a></div> <div>Your complete guide to the Artfone CS182 Senior Phone. Discover its specifications, how to use the SOS function, make calls, adjust settings, and find answers in the FAQ. Designed for ease of use.</div>
<div>artfone® CS181</div> <div></div>	<div><a href="#">Artfone CS181 User Manual: Features and Operation Guide</a></div> <div>Comprehensive guide to the Artfone CS181 mobile phone, covering setup, features like SOS, calling, volume control, and frequently asked questions for easy operation.</div>
<div>Artfone G3 Flip</div> <div></div>	<div><a href="#">Artfone G3 Flip Phone User Manual</a></div> <div>Comprehensive user manual for the Artfone G3 Flip phone, detailing features, operation, and FAQs. Learn how to make calls, use the flashlight, SOS function, and manage settings.</div>

	<p><a href="#">Artfone CF241A Flip Phone User Guide</a></p> <p>User guide for the Artfone CF241A flip phone, covering features like the keypad, SOS function, making calls, and common questions.</p>
	<p><a href="#">Artfone C1 Senior Mobile Phone User Manual - Features, SOS, and FAQ</a></p> <p>Explore the Artfone C1 senior mobile phone with this comprehensive user manual. Learn about its SOS function, speed dial, volume controls, and answers to frequently asked questions. Designed for simplicity and ease of use.</p>
	<p><a href="#">Artfone CS181 User Manual and Features</a></p> <p>Comprehensive guide to the Artfone CS181 mobile phone, covering features, operation, settings, and frequently asked questions. Includes details on SOS function, calls, volume, and network compatibility.</p>