

## Garmin Striker Vivid 7cv

# Garmin Striker Vivid 7cv Fishfinder Instruction Manual

## INTRODUCTION

---

The Garmin Striker Vivid 7cv is an easy-to-use 7-inch color fishfinder designed to help you see fish and underwater structures with enhanced clarity. This device features high-contrast color palettes for improved visibility and includes a GT20 transducer for both Garmin CHIRP traditional sonar and CHIRP ClearVü scanning sonar. Equipped with high-sensitivity GPS, it allows for waypoint marking, route planning, and monitoring your boat's speed. Built-in Quickdraw Contours software enables you to create and save custom maps with 1-foot contours. Wi-Fi connectivity facilitates integration with the ActiveCaptain app on compatible smartphones for waypoint transfer, smart notifications, and access to the Garmin Quickdraw Community.

Key features include:

- 7-inch color display with vivid scanning sonar color palettes.
- GT20 transducer for CHIRP traditional and ClearVü scanning sonar.
- High-sensitivity GPS for navigation and speed tracking.
- Integrated Quickdraw Contours mapping software.
- Wi-Fi connectivity for ActiveCaptain app integration.

## SETUP AND INSTALLATION

---

### What's in the Box

Verify that all components are present:

- STRIKER Vivid 7cv fishfinder
- GT20-TM transducer
- Power/data cable
- Tilt/swivel mount
- Hardware for mounting

- Garmin bumper sticker
- Documentation

## Mounting the Device

The STRIKER Vivid 7cv includes a tilt/swivel mount for flexible positioning. Secure the mount to a stable surface in your boat, ensuring clear visibility and easy access to controls. The package also contains hardware for transom and trolling motor mounting of the transducer.

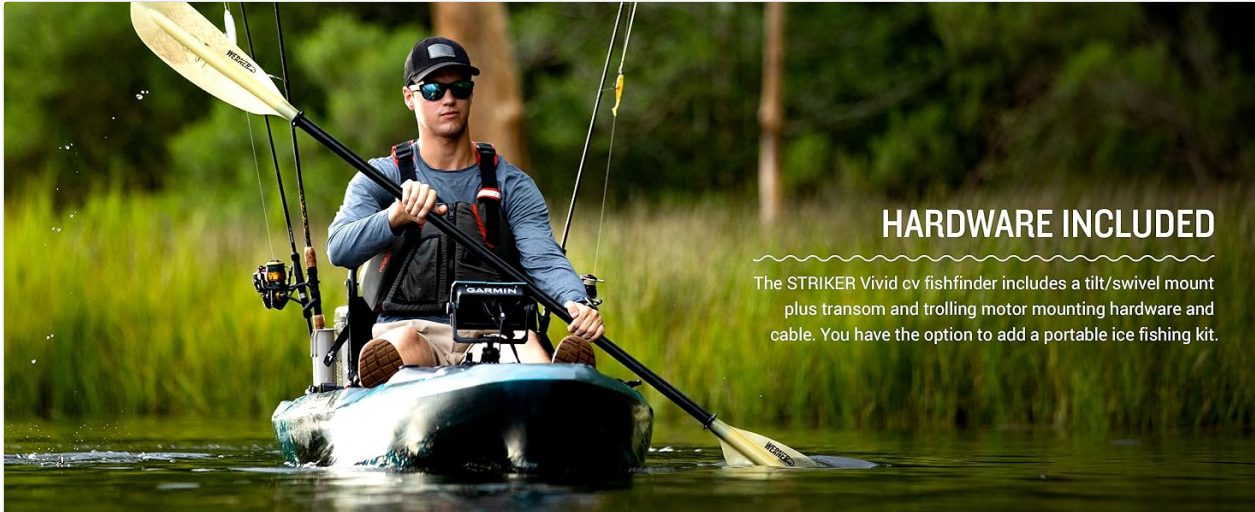


Image: The STRIKER Vivid 7cv fishfinder comes with a tilt/swivel mount and hardware for transom and trolling motor mounting, providing versatile installation options.

## Transducer Installation

Install the GT20-TM transducer according to the detailed instructions provided in the separate transducer installation guide. Proper placement is crucial for optimal sonar performance.

## Power Connection

Connect the power/data cable to the fishfinder and to a 12V DC power source in your boat. Ensure all connections are secure and waterproof.

## OPERATING INSTRUCTIONS

### Powering On/Off

Press and hold the power button (usually marked with a power symbol) to turn the device on or off. A short press typically adjusts backlight or accesses quick menus.

### Sonar Functionality

The Striker Vivid 7cv utilizes CHIRP traditional sonar and CHIRP ClearVü scanning sonar to provide detailed views of fish and underwater structures. Navigate through the sonar screens to view different representations of the underwater environment. The new vivid color palettes enhance the distinction between targets and bottom structure.



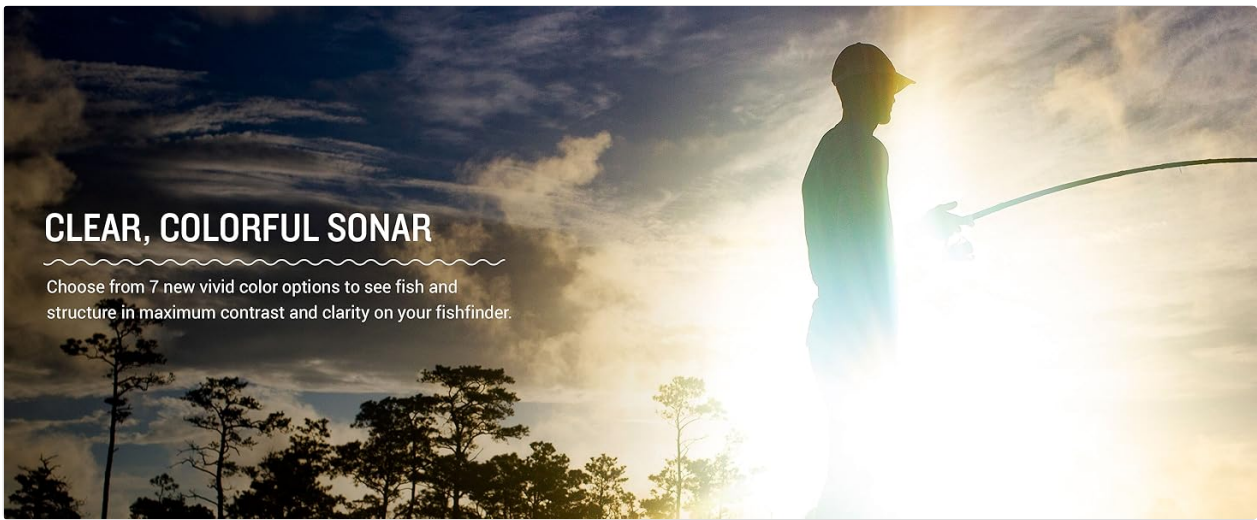
Image: The 7-inch color fishfinder display with new vivid scanning sonar color palettes, designed to easily distinguish fish and structure.



Image: A split-screen view on the Striker Vivid 7cv, displaying navigation, traditional sonar, and ClearVü scanning sonar simultaneously.

## GPS and Navigation

Utilize the high-sensitivity GPS to mark specific locations (waypoints), create and follow routes, and monitor your boat's speed. This functionality is essential for returning to productive fishing spots or navigating unfamiliar waters.



## CLEAR, COLORFUL SONAR

Choose from 7 new vivid color options to see fish and structure in maximum contrast and clarity on your fishfinder.

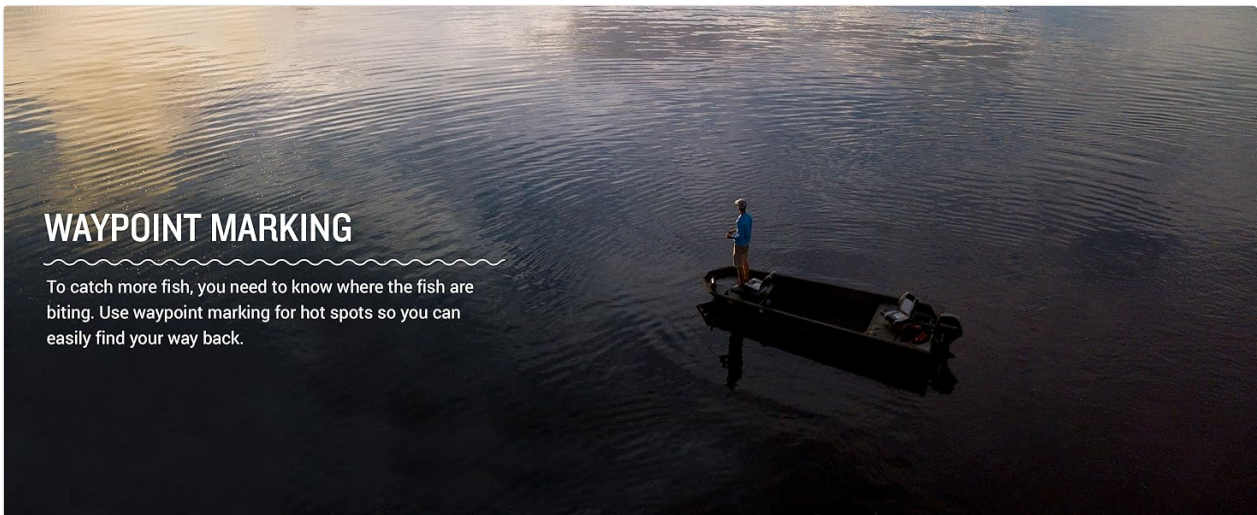
Image: The fishfinder displaying high-sensitivity GPS data, including boat speed, heading, and marked waypoints for navigation.

## Quickdraw Contours

The built-in Quickdraw Contours software allows you to create personalized fishing maps with 1-foot contours as you navigate. These maps can be saved and used for future trips, providing detailed bathymetric information for your preferred fishing areas.

## ActiveCaptain App Connectivity

Connect your Striker Vivid 7cv to the Garmin ActiveCaptain app via Wi-Fi on a compatible smartphone. This connection enables you to transfer waypoints, receive smart notifications directly on your fishfinder, and access the Garmin Quickdraw Community to share or download maps.



## WAYPOINT MARKING

To catch more fish, you need to know where the fish are biting. Use waypoint marking for hot spots so you can easily find your way back.

Image: The fishfinder screen illustrating Wi-Fi connectivity, allowing integration with the ActiveCaptain app for enhanced features.

## MAINTENANCE

To ensure the longevity and optimal performance of your Garmin Striker Vivid 7cv, follow these maintenance guidelines:

- **Cleaning the Display:** Use a soft, clean, lint-free cloth to wipe the screen. For stubborn dirt, dampen the cloth with water or a mild glass cleaner. Avoid abrasive cleaners or solvents.
- **Cleaning the Device Body:** Wipe the exterior with a damp cloth. Do not use harsh chemicals.

- **Transducer Care:** Regularly inspect the transducer for marine growth or damage. Clean it gently with a soft brush and fresh water.
- **Cable Connections:** Periodically check all cable connections for corrosion or damage. Ensure they are securely fastened.
- **Storage:** When not in use for extended periods, store the device in a dry, cool environment, away from direct sunlight and extreme temperatures.

## TROUBLESHOOTING

If you encounter issues with your Garmin Striker Vivid 7cv, consider the following common troubleshooting steps:

- **Device Not Powering On:** Check power cable connections, ensure the power source (battery) is charged and properly connected. Verify the fuse in the power cable.
- **No Sonar Display:** Ensure the transducer is correctly connected to the fishfinder. Check for obstructions or damage to the transducer. Verify sonar settings are appropriate for your depth and water conditions.
- **GPS Not Acquiring Signal:** Ensure the device has a clear view of the sky. Move away from tall structures or dense foliage that might block the signal. Allow sufficient time for satellite acquisition.
- **Display Issues:** Adjust backlight and contrast settings. If the screen is frozen, try restarting the device.
- **ActiveCaptain Connectivity Problems:** Ensure Wi-Fi is enabled on both the fishfinder and your smartphone. Verify that the ActiveCaptain app is updated to the latest version.

For more detailed troubleshooting or persistent issues, refer to the comprehensive owner's manual available on the Garmin support website or contact Garmin customer support directly.

## SPECIFICATIONS

Feature	Specification
Brand	Garmin
Model Name	Striker Vivid 7cv
Item Model Number	010-02552-00
Power Source	Battery Powered
Screen Size	7 Inches
Display Type	LCD
Item Weight	4.7 Pounds
Product Dimensions	3.4"L x 6.1"W x 7"H
Mounting Type	Surface Mount
UPC	753759268374, 753759268367
Connectivity Technologies	Wi-Fi
Human Interface Input	Buttons
Color	Black

Feature	Specification
Manufacturer	Garmin
Date First Available	October 27, 2020

## WARRANTY AND SUPPORT

---

Garmin products are designed for reliability and performance. Your Garmin Striker Vivid 7cv is covered by a limited warranty against defects in materials or workmanship. Specific warranty terms and conditions, including duration and coverage details, are provided with your product documentation and are available on the official Garmin website.

For technical assistance, warranty claims, or additional product information, please visit the Garmin support website or contact Garmin customer service. You can find contact details and a comprehensive knowledge base at [www.garmin.com/support](http://www.garmin.com/support).