

VSYSTO B6F

VSYSTO Motorcycle Dash Cam B6F User Manual

Model: B6F

1. INTRODUCTION

This manual provides detailed instructions for the installation, operation, and maintenance of your VSYSTO Motorcycle Dash Cam B6F. Please read this manual thoroughly before using the product to ensure correct usage and optimal performance. Keep this manual for future reference.

2. PACKAGE CONTENTS

Verify that all items listed below are included in your package:

- Main DVR Unit
- Front Camera
- Rear Camera
- Wired Controller
- ACC Power Cable (Power Module)
- Mounting Accessories (brackets, adhesive pads, screws)



Image 2.1: Components of the VSYSTO Motorcycle Dash Cam B6F. Shown are the main DVR unit, two cameras (front and rear), and the wired controller.

3. PRODUCT OVERVIEW

The VSYSTO B6F is a dual-channel motorcycle dash cam system designed for reliable recording of your rides. It features:

- **Dual 1080P Cameras:** Front and rear cameras record simultaneously in Full HD 1080p resolution.
- **140° Wide Angle Lens:** Both cameras offer a wide field of view to capture more of the road.
- **IMX307 Sensor & WDR:** Equipped with an IMX307 sensor and Wide Dynamic Range (WDR) for improved image quality in various lighting conditions, including low light.
- **IP67 Waterproof Design:** The entire system is designed to be waterproof, ensuring functionality in rainy conditions.
- **WiFi & App Control:** Connect to the dash cam via Wi-Fi using a dedicated app for settings, live view, and video management.
- **G-Sensor:** Automatically detects impacts and locks the current video file to prevent overwriting.
- **Loop Recording:** Continuously records by overwriting the oldest files when the memory card is full.
- **Compact Design:** The main unit is small, allowing for discreet installation under the seat or in other suitable locations.

Dual 1080P Motorcycle Dash Cam

Front & rear View · Simultaneous Record · Waterproof



Image 3.1: Key features of the VSYSTO Motorcycle Dash Cam, highlighting dual 1080P recording, wide-angle lenses, IMX307 sensor, Wi-Fi connectivity, waterproof design, supercapacitor, loop recording, and emergency mode.

4. INSTALLATION

Proper installation is crucial for the dash cam's performance and durability. Consider the placement of each component carefully.

4.1 Component Placement

- **Main Unit:** Install the main DVR unit in a secure, dry location, such as under the motorcycle seat. Its compact size allows for discreet placement.
- **Cameras:** Mount the front and rear cameras in positions that provide a clear, unobstructed view of the road. Ensure they are securely fastened and their angles can be adjusted.
- **Wired Controller:** Place the wired controller within easy reach on your handlebars or dashboard for quick access to functions.

4.2 Wiring Connections

Connect the components as shown in the wiring diagram below. Ensure all connections are secure and waterproof where applicable.



Image 4.1: Wiring diagram illustrating how to connect the front camera, wired controller, ACC power cable, and rear camera to the main DVR unit, and the power module to the motorcycle's battery and ACC power source.

- Connect the front and rear cameras to their respective ports on the main unit.
- Connect the wired controller to the main unit.
- The ACC power cable has three wires: red (positive), black (negative), and yellow (ACC). Connect the red wire to the positive terminal of your motorcycle battery, the black wire to the negative terminal, and the yellow ACC wire to a switched 12V power source that activates with the ignition.



Image 4.2: Overview of component placement on a motorcycle, showing the recommended locations for the main unit, front and rear cameras, wired controller, and power module.

5. OPERATION

5.1 Automatic Recording

Once properly installed and wired to the ACC power source, the dash cam will automatically power on and begin recording when you turn on your motorcycle's ignition. It will automatically stop recording and power off when the ignition is turned off.



Image 5.1: The dash cam initiates automatic video recording when the motorcycle ignition is turned on.

5.2 Wired Controller Functions

The wired controller provides convenient access to key functions:

- **Flash Light:** Indicates the current status of the camera (e.g., recording, standby).
- **Buttons:** Press any button on the wired controller while in video mode to activate the manual emergency recording mode. This will lock the current video file, preventing it from being overwritten.

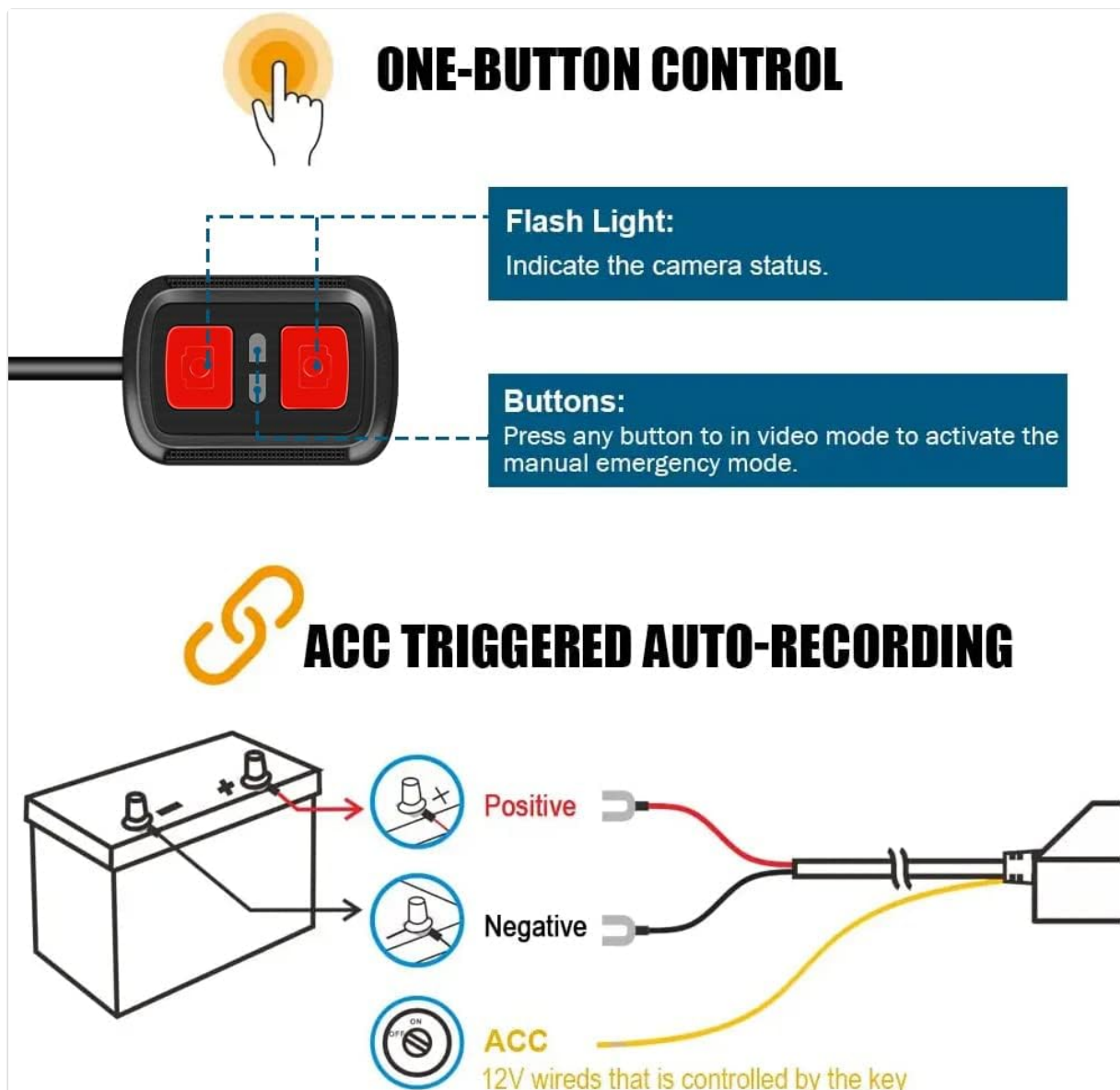


Image 5.2: The wired controller features a flash light for status indication and buttons for manual emergency recording.

6. APP AND WiFi CONNECTIVITY

The VSYSTO dash cam features integrated Wi-Fi for seamless control and video management via a dedicated smartphone application (compatible with Android and iOS).

6.1 Connecting to the App

1. Download the VSYSTO app from your smartphone's app store.
2. Turn on your motorcycle's ignition to power on the dash cam.
3. On your smartphone, go to Wi-Fi settings and connect to the dash cam's Wi-Fi network (SSID and password can be found in the dash cam's settings or manual).
4. Open the VSYSTO app. It should automatically detect and connect to the dash cam.

6.2 App Functions

Through the app, you can:

- **Live View:** See real-time footage from both cameras.
- **Video Playback:** Review recorded videos directly on your phone.
- **Video Download/Share:** Transfer video files to your smartphone or tablet.
- **Settings:** Adjust various dash cam settings, such as video resolution, loop recording duration, G-sensor sensitivity, and more.



Image 6.1: The VSYSTO app interface, demonstrating Wi-Fi connectivity, live view, video file management (open, save, delete), and access to settings.

Image 6.2: The dash cam's Wi-Fi function allows for real-time viewing and control via a smartphone app.

7. FEATURES EXPLAINED

7.1 Wide Dynamic Range (WDR)

WDR technology enhances video quality by balancing exposure in scenes with high contrast, such as tunnels or bright sunlight. It ensures that both bright and dark areas of the footage are clearly visible.



Image 7.1: Comparison of video footage with and without WDR, illustrating how WDR improves visibility in challenging lighting conditions.

7.2 G-Sensor

The built-in G-sensor detects sudden movements or impacts (e.g., collisions). When an event is detected, the dash cam automatically locks the current video segment, protecting it from being overwritten by loop recording. This ensures critical footage is preserved.



Image 7.2: The G-Sensor automatically locks video files in the event of an impact, securing important footage.

7.3 Loop Recording

Loop recording ensures continuous recording by automatically overwriting the oldest video files when the memory card reaches its full capacity. This eliminates the need for manual memory card management.



Image 7.3: Loop recording automatically manages storage by overwriting the oldest files when the memory card is full.

7.4 Night Vision

The dash cam's IMX307 sensor and 6-layer high-quality glass lens contribute to enhanced night vision capabilities, providing clearer recordings in low-light conditions.



Image 7.4: The 6-layer high-quality glass lens and IMX307 sensor enhance the dash cam's night vision capabilities.

7.5 Waterproof Design

The VSYSTO B6F system boasts an IP67 waterproof rating for the main unit and cameras, ensuring reliable operation even in heavy rain or wet conditions.

IPX5/IPX7
Waterproof



Image 7.5: The dash cam components are designed to be waterproof, suitable for various weather conditions.

8. MAINTENANCE

Regular maintenance helps prolong the life and performance of your dash cam.

- **Clean Lenses:** Periodically clean the camera lenses with a soft, lint-free cloth to ensure clear video quality.
- **Check Connections:** Ensure all cables and connections are secure and free from corrosion.
- **Format SD Card:** It is recommended to format the microSD card regularly (e.g., once a month) using the dash cam's app settings to maintain optimal recording performance and prevent data corruption. Back up any important files before formatting.
- **Software Updates:** Check the VSYSTO official website or app for any available firmware updates to ensure your device has the latest features and bug fixes.

9. TROUBLESHOOTING

If you encounter issues with your VSYSTO dash cam, refer to the following common troubleshooting steps:

- **Dash Cam Not Powering On:**
 - Check all power connections, especially the battery and ACC wires.

- Ensure the motorcycle ignition is on if wired to ACC.
- **No Recording:**
 - Verify that a microSD card is inserted correctly.
 - Format the microSD card via the app.
 - Check if the card is full (loop recording should prevent this, but check for locked files).
- **Poor Video Quality:**
 - Clean camera lenses.
 - Ensure cameras are securely mounted and not vibrating excessively.
 - Check video resolution settings in the app.
- **Wi-Fi Connection Issues:**
 - Ensure the dash cam is powered on.
 - Restart your smartphone's Wi-Fi.
 - Try reconnecting to the dash cam's Wi-Fi network.

If these steps do not resolve the issue, please contact VSYSTO customer support for further assistance.

10. SPECIFICATIONS

Brand	VSYSTO
Model	B6F
Video Resolution	1080p (Front & Rear)
Lens Angle	140 Degrees (Front & Rear)
Image Sensor	IMX307
Waterproof Rating	IP67 (Main Unit & Cameras)
Connectivity	Wi-Fi
Storage	microSD (up to 256GB supported)
Special Features	G-Sensor, Loop Recording, WDR, Night Vision, App Control
Power Input	12V-24V (via Power Module)
Power Output	5V/2A (from Power Module)
Product Dimensions (Main Unit)	6.8 x 6.8 x 2.2 cm
Item Weight	500 g



Image 10.1: Physical dimensions of the main DVR unit and a single camera.




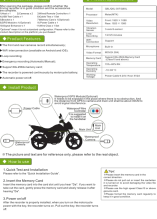
Image 10.2: Approximate recording times based on microSD card capacity for both front and rear cameras.

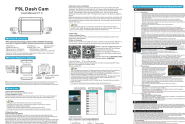
11. WARRANTY AND SUPPORT

VSYSTO provides a one-year warranty for each Motorcycle Dash Cam. If you encounter any issues or require assistance, please contact our customer support team. We are committed to providing responsive support and helpful advice to ensure your satisfaction.

For warranty claims or technical support, please refer to the contact information provided with your product packaging or visit the official VSYSTO website.

Related Documents - B6F

<p>B6 Dash Cam User Manual</p>  <p><small>Please read this manual carefully. It contains important information on product features, functions, and safety. Please read this manual before using the product. The manual will help you get the most out of your product.</small></p>	<p>B6 Dash Cam User Manual - Installation and Operation Guide</p> <p>Comprehensive user manual for the VSYSTO B6 Dash Cam, covering installation, operation, features, and troubleshooting for motorcycle use. Includes details on camera setup, power module connection, app usage, and parameter settings.</p>
<p>D6RL Dash Cam User Manual</p>  <p><small>Please read this manual carefully. It contains important information on product features, functions, and safety. Please read this manual before using the product. The manual will help you get the most out of your product.</small></p>	<p>D6RL Dash Cam User Manual</p> <p>User manual for the VSYSTO D6RL Dash Cam, providing instructions on installation, operation, and troubleshooting for this motorcycle video recording device.</p>
<p>B6 Dash Cam User Manual</p>  <p><small>Please read this manual carefully. It contains important information on product features, functions, and safety. Please read this manual before using the product. The manual will help you get the most out of your product.</small></p>	<p>B6 Dash Cam User Manual - Installation and Operation Guide</p> <p>Comprehensive user manual for the B6 Dash Cam, covering installation, operation, troubleshooting, and mobile app usage. Learn how to set up and maximize the features of your motorcycle dash cam.</p>
<p>VSYSTO MOTORCYCLE DASH CAM Q6L USER MANUAL</p>  <p><small>Please read this manual carefully. It contains important information on product features, functions, and safety. Please read this manual before using the product. The manual will help you get the most out of your product.</small></p>	<p>VSYSTO Q6L Motorcycle Dash Cam User Manual</p> <p>Comprehensive user manual for the VSYSTO Q6L Motorcycle Dash Cam, detailing installation, operation, features like parking mode and Wi-Fi connectivity, and troubleshooting.</p>
<p>Q6L Dash Cam User Manual</p>  <p><small>Please read this manual carefully. It contains important information on product features, functions, and safety. Please read this manual before using the product. The manual will help you get the most out of your product.</small></p>	<p>VSYSTO Q6L Motorcycle Dash Cam User Manual</p> <p>User manual for the VSYSTO Q6L motorcycle dash cam. Covers product features, specifications, installation guide, operation instructions, and important notes for safe and effective use. Includes details on recording modes, WiFi connectivity, and accessory setup.</p>



[VSYSTO F9L Motorcycle Dash Cam User Manual](#)

User manual for the VSYSTO F9L motorcycle dash cam, detailing product accessories, appearance, installation, operation, video recording modes (normal, emergency, G-sensor), mobile app connectivity via WiFi, wired remote controller functions, video playback, settings menu, Bluetooth phone and music features, auxiliary display modes, and important notes.