

## Yaheetech YA-00099576

# Yaheetech 3-Drawer Bedside Table Nightstand (Model YA-00099576) - Instruction Manual

Model: YA-00099576 | Brand: Yaheetech

## 1. INTRODUCTION

This manual provides comprehensive instructions for the assembly, safe use, and proper maintenance of your Yaheetech 3-Drawer Bedside Table Nightstand. This versatile furniture piece is designed to offer practical storage and complement various interior styles. Please read this manual thoroughly before assembly and use to ensure optimal performance and longevity of your product.

The Yaheetech 3-Drawer Bedside Table Nightstand features a minimalist design with clean lines and a compact form factor, making it suitable for bedrooms, living rooms, or offices. It includes three spacious drawers for organized storage of daily essentials.

## 2. SAFETY WARNINGS

- Always follow the assembly instructions precisely to ensure structural integrity.
- Do not overload the table or its drawers. Refer to the specifications section for maximum weight capacities.
- Ensure the table is placed on a stable, level surface to prevent tipping.
- If possible, anchor the table to a wall using appropriate hardware (not included) to prevent accidental tipping, especially in households with children or pets.
- Keep small parts and packaging materials away from children to avoid choking hazards.

## 3. PACKAGE CONTENTS

Before beginning assembly, verify that all components listed below are present and undamaged. If any parts are missing or damaged, please contact customer support.

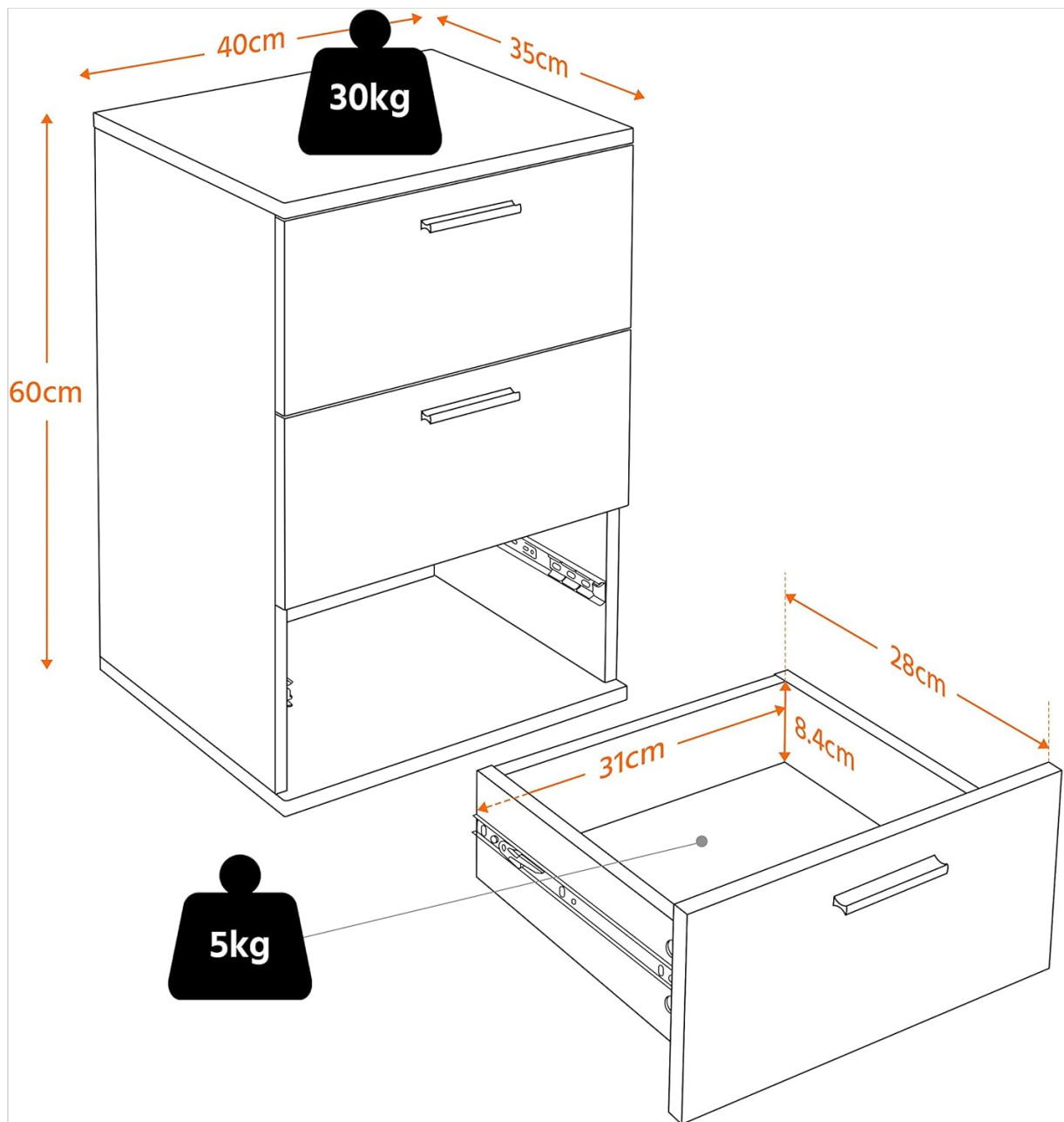
- MDF Panels (Top, Bottom, Sides, Back, Drawer Fronts, Drawer Sides, Drawer Backs)
- Metal Drawer Slides
- Metal Knobs/Handles
- Assembly Hardware (Screws, Dowels, Cam Locks, etc.)
- Protective Feet
- Instruction Manual

## 4. ASSEMBLY INSTRUCTIONS (SETUP)

---

Assembly is designed to be straightforward. It is recommended to have a second person assist with certain steps for easier and safer assembly. A Phillips head screwdriver is required (not included).

1. **Unpack and Identify Parts:** Carefully unpack all components and lay them out on a clean, soft surface to prevent scratches. Identify each part using the provided diagrams.
2. **Assemble the Main Frame:** Attach the side panels to the top and bottom panels using the designated hardware (dowels, cam locks, screws). Ensure all connections are secure.
3. **Install Back Panel:** Secure the back panel to the main frame. This adds significant stability to the unit.
4. **Attach Drawer Slides:** Install the metal drawer slides to the interior sides of the main frame and to the drawer side panels. Ensure they are correctly oriented for smooth operation.
5. **Assemble Drawers:** Construct each of the three drawers by attaching the front, back, and side panels. Insert the drawer bottom.
6. **Attach Drawer Knobs:** Secure the metal knobs to the front of each drawer.
7. **Insert Drawers:** Carefully slide the assembled drawers onto the installed drawer slides in the main frame.
8. **Attach Protective Feet:** Install the protective feet to the bottom corners of the nightstand to prevent floor scratches.



**Figure 1:** Dimensions and Weight Capacities. Overall dimensions are approximately 40cm (W) x 35cm (D) x 60cm (H). The top surface supports up to 30kg, and each drawer supports up to 5kg.

## Upgraded slide rail

Slide smoothly and easy to open

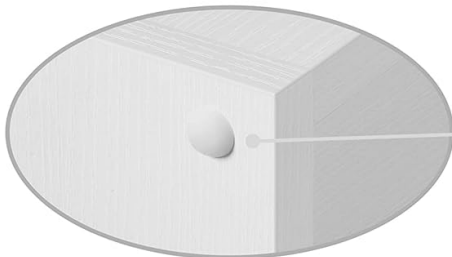
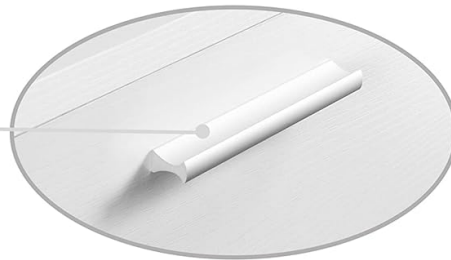


## Minimalist style

Wood-like grain surface

## Metal knob

Designed for style and usage



## Protective feet

Protect your floor from scratches

**Figure 2:** Key Features. This image highlights the upgraded smooth-sliding drawer rails, the minimalist wood-like grain surface, the durable metal knobs, and the protective feet designed to prevent floor damage.

### **BACK STRUCTURE**

An added bracket plate on the back for extra stability

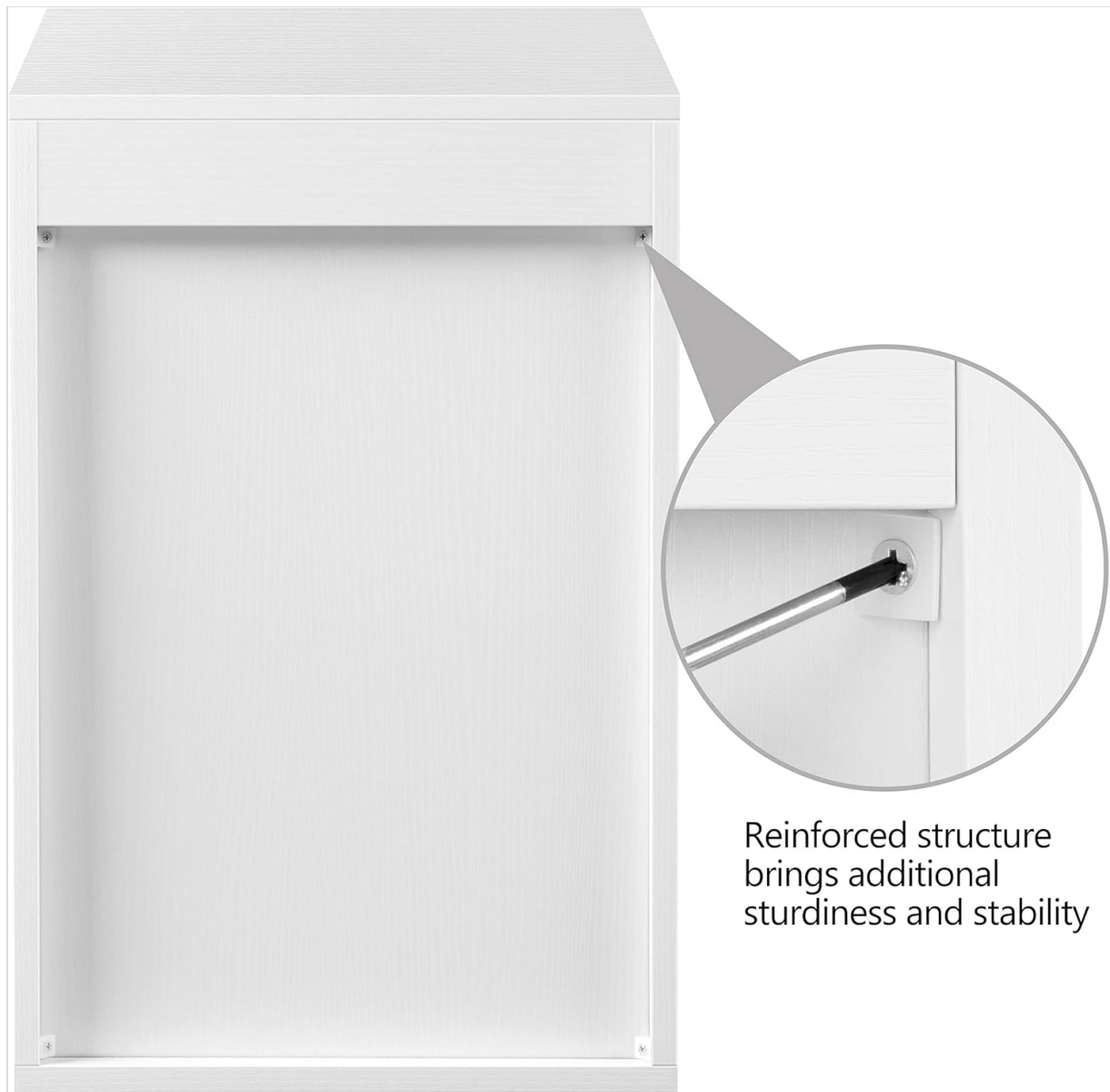


### **SLIDE STRUCTURE**

Adopting ball bearing slides for smooth slide operation and a larger loading bearing capacity



**Figure 3:** Structural Enhancements. This image illustrates the added bracket plate on the back for extra stability and the ball-bearing drawer slides for smooth operation and increased load capacity.



Reinforced structure  
brings additional  
sturdiness and stability

**Figure 4:** Reinforced Structure. A detailed view showing the reinforced corner structure, which contributes to the overall sturdiness and stability of the nightstand.

## 5. USAGE (OPERATING)

Your Yaheetech 3-Drawer Bedside Table Nightstand is designed for versatile use in various home environments.

- **Storage:** Utilize the three spacious drawers to organize personal items such as books, magazines, remote controls, hand creams, and other daily necessities.
- **Surface Use:** The top surface can hold items like lamps, alarm clocks, decorative plants, or beverages. Ensure the weight does not exceed the maximum capacity of 30 kg.
- **Placement:** Ideal for use as a bedside table in bedrooms, a side table in living rooms, or a small storage unit in home offices.



**Figure 5:** Ample Storage Capacity. This image shows the three drawers fully extended, illustrating the generous space available for organizing various items.





**Figure 6:** Bedroom Application. The nightstand positioned beside a bed, serving as a functional and aesthetic element in a bedroom.





**Figure 7:** Living Room Application. The nightstand used as a side table next to a sofa, demonstrating its suitability for living spaces.



**Figure 8:** Office Application. The nightstand integrated into an office environment, providing additional storage next to a desk.

## 6. CARE AND MAINTENANCE

Proper care will help maintain the appearance and extend the life of your nightstand.

- **Cleaning:** Wipe the surface with a soft, damp cloth. Avoid using harsh chemicals, abrasive cleaners, or excessive moisture, as these can damage the finish.
- **Spills:** Clean up spills immediately to prevent staining or damage to the engineered wood.
- **Sunlight:** Avoid prolonged exposure to direct sunlight, which can cause fading or discoloration.
- **Heat:** Do not place hot items directly on the surface. Use coasters or protective pads.
- **Hardware:** Periodically check and tighten all assembly hardware to ensure stability.

## 7. SPECIFICATIONS

Brand	Yaheetech
Model Number	YA-00099576 (also YA8g6g0001)

Color	White
Overall Dimensions (L x W x H)	40 cm x 35 cm x 60 cm (15.7" x 13.8" x 23.6")
Material	Engineered Wood (MDF), Metal
Item Weight	15 Kilograms (33 lbs)
Maximum Weight Capacity (Top Surface)	30 Kilograms (66 lbs)
Maximum Weight Capacity (Each Drawer)	5 Kilograms (11 lbs)
Features	Easy Assembly, Storage
Care Instructions	Wipe with a damp cloth
Recommended Uses	Bedroom, Office, Living Room

## 8. TROUBLESHOOTING

If you encounter any issues with your nightstand, refer to the following common troubleshooting tips:

- **Drawers not sliding smoothly:**
  - Ensure the drawer slides are installed correctly and are aligned on both the drawer and the main frame.
  - Check for any obstructions in the slide mechanism.
  - Verify that all screws securing the slides are tightened.
- **Table feels unstable or wobbly:**
  - Confirm that all assembly hardware (screws, cam locks) are fully tightened.
  - Ensure the table is placed on a flat, level surface. Adjust protective feet if necessary to compensate for uneven floors.
  - Check if the back panel is securely attached, as it contributes to overall stability.
- **Parts do not fit together:**
  - Double-check the assembly diagrams to ensure you are using the correct parts for each step and that they are oriented correctly.
  - Do not force parts together, as this can cause damage.

## 9. WARRANTY AND SUPPORT

Yaheetech is committed to providing quality products. For any questions, concerns, or assistance with your product, please contact Yaheetech customer support. Please have your model number (YA-00099576) and purchase information ready when contacting support. Information regarding specific warranty terms and conditions may be available on the Yaheetech official website or through your point of purchase.

