

Blueair H38i

Blueair DreamWell H38i Evaporative Humidifier Instruction Manual

Model: H38i

1. PRODUCT OVERVIEW

The Blueair DreamWell H38i is an advanced evaporative humidifier designed to provide a clean and comfortable indoor environment. This unit incorporates a UV lamp for enhanced hygiene and utilizes 360° InvisibleMist Technology to deliver ample humidification without visible mist. Its user-friendly design ensures easy maintenance, with a machine-washable filter and a dishwasher-safe water tank. The H38i also features an automatic shut-off function for safety when the water level is low. Enhance your daily relaxation with its quiet operation, integrated light function, and aroma compatibility, creating a pleasant atmosphere for improved sleep.

清潔さとお手入れのしやすさにこだわりぬいた、 ブルーエア初の単機能加湿器。

3.8Lの大容量、タンクから分離された加湿フィルター、UVランプ搭載など、衛生面に配慮した仕組みで、清潔にうるおいを届けます。



Blueair DreamWell H38i Humidifier placed on a bedside table in a bedroom setting, highlighting its compact and stylish design.

360° InvisibleMist™テクノロジー

霧を出さず、水道水で使える気化式加湿方式。自然の蒸発原理を利用してやさしくうるおいを広げ、室内を心地よい湿度に保ちやすい設計。



Diagram illustrating the 360° InvisibleMist Technology, showing how the evaporative humidification works without producing visible mist.

2. SETUP

2.1 Unpacking

Carefully remove all components from the packaging. Ensure all protective wraps and packing materials are removed from the unit and its accessories.

2.2 Placement

Place the humidifier on a flat, stable surface. Ensure there is adequate space around the unit for optimal air circulation.

2.3 Filling the Water Tank

The DreamWell H38i offers two convenient ways to refill the water tank:

1. **Top-Fill Method:** Pour water directly into the top opening of the humidifier.
2. **Tank Removal Method:** Remove the water tank from the base, fill it at a sink, and then reinsert it into the unit.

Use clean tap water. Do not exceed the maximum fill line.

用途に合わせた2 Wayリフィル

水は天面から注ぐだけで簡単に給水できる天面給水と、直接タンクに給水する2通りの方法が選べます。天面が広く、給水しやすい構造です。



Image demonstrating two ways to refill the humidifier: pouring water directly from the top or removing the tank for filling.

2.4 Power Connection

Connect the power adapter to the humidifier and then plug it into a standard electrical outlet (100 V AC, 50/60Hz).

2.5 Wi-Fi Setup (Optional)

For smart control features, download the Blueair app from the App Store or Google Play. Follow the in-app instructions to connect your H38i humidifier to your Wi-Fi network (IEEE 802.11b/g/n, 2.4GHz band required).

アプリで本体操作や空気質の可視化も

Wi-Fiで「Blueair アプリ⁴」と連携し、スマートフォンなどお手持ちのデバイスで操作できます。

運転モードの遠隔操作

水位の低下のお知らせ

室内湿度のモニタリング

ライトの明るさ調整

チャイルドロック

加湿フィルター使用率

ドライモード設定

カスタムスケジュール機能

タイマー設定



Screenshots of the Blueair app on a smartphone, demonstrating remote operation, humidity monitoring, scheduling, and other smart features.

3. OPERATING INSTRUCTIONS

3.1 Power On/Off

Press the power button on the top panel or use the Blueair app to turn the unit on or off.

3.2 Humidity Settings

Adjust the desired humidity level using the controls on the unit's display or through the Blueair app. The unit will automatically maintain the set humidity.

進化したセンサーと操作性。 使いやすさにこだわった表示設計

タンク内の水量をリアルタイム表示。残量が少なくなると、点滅して給水タイミングをお知らせ。希望の湿度を簡単設定可能。



Close-up of the humidifier's top panel, showing the digital display with humidity percentage and touch controls for various functions.

3.3 Operating Speed

Select from Night mode or speeds 1-3. Night mode operates at a quiet 20 dB(A) for undisturbed sleep.

3.4 Aroma Function

Add 2-3 drops of your preferred aroma oil to the included scent pod. Insert the pod into the designated slot on the humidifier to enjoy a pleasant fragrance in your room.

アロマオイルを垂らし香りを楽しむ

付属のセントポッドに、お好みのアロマオイルを2~3滴垂らすと、ほのかな香りがやさしく広がり、お部屋を心地よい空気で包み込みます。

※アロマオイルは付属しません



Image showing how to add aroma oil to the scent pod, which slides into a designated slot on the humidifier.

3.5 Water Level Indicator

The unit features a water level sensor and indicator. When the water level is low, the unit will automatically stop operation and indicate the need for refilling.

眠りを変える、新しいナイトルーティン

ベッドライト、アロマ対応、静音³設計。うるおいと香りに満たされる心地よい空間へ。毎日のくつろぎタイムをより上質に。



※写真はStone Grey

The Blueair DreamWell H38i Humidifier in a bedroom at night, with a soft glow from its light function, creating a relaxing atmosphere.

4. MAINTENANCE

Regular cleaning and maintenance are crucial for optimal performance and hygiene of your humidifier.

4.1 Humidifying Filter Cleaning

The humidifying filter is designed for easy cleaning. It can be washed in a washing machine. Refer to the detailed instructions in the full user manual for specific washing conditions. The recommended replacement guideline for the filter is approximately 9-12 months, depending on usage and water quality.

かんたんお手入力で、清潔な毎日を

加湿フィルターは洗濯機で洗えて^{*1}お手入れ簡単。
食洗機対応タンク^{*2}で毎日使いやすいデザイン。



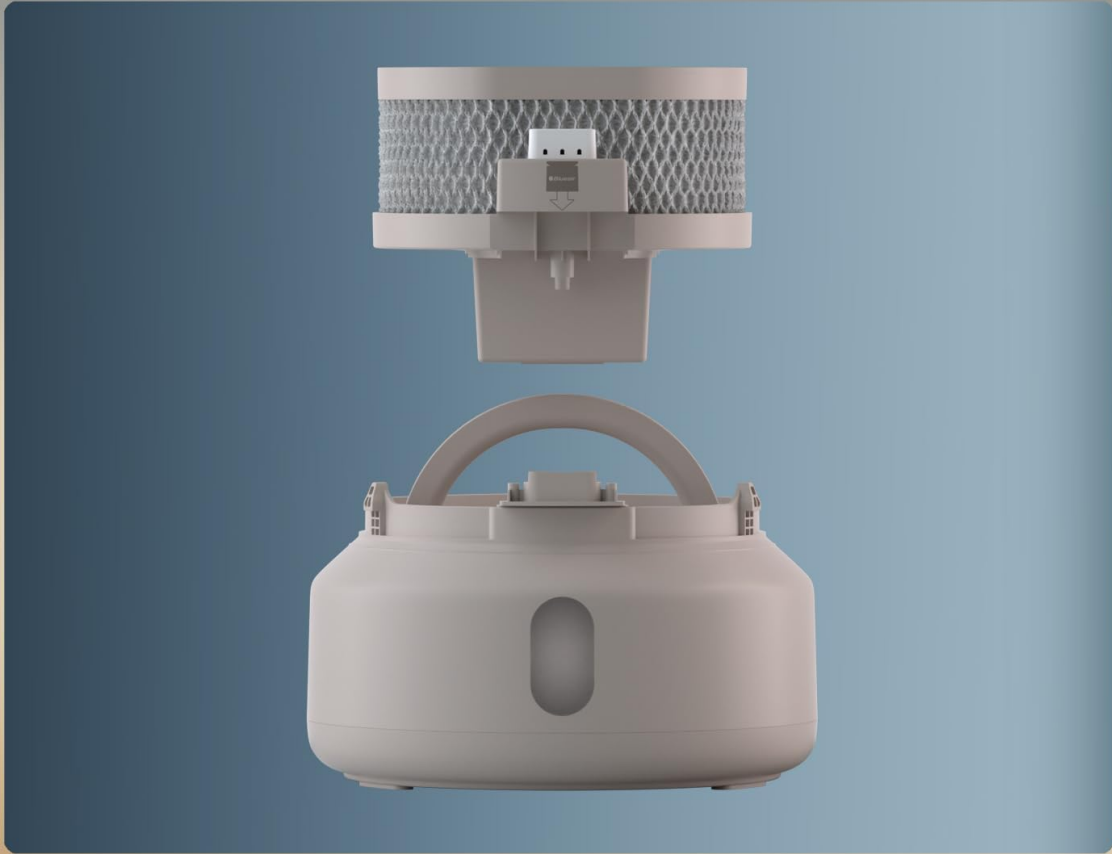
A person placing the humidifying filter into a washing machine, demonstrating the ease of cleaning.

4.2 Water Tank Cleaning

The water tank is dishwasher-safe for convenient and thorough cleaning. For manual cleaning, use mild soap and water. The 'Wet & Dry Separate Structure' ensures that the humidifying filter and tank are completely separated, making it easier to keep the filter clean.

Wet & Dryセパレート構造

加湿フィルターとタンクが完全に分離されているため、
加湿フィルターを常に清潔に保ちやすい設計です。



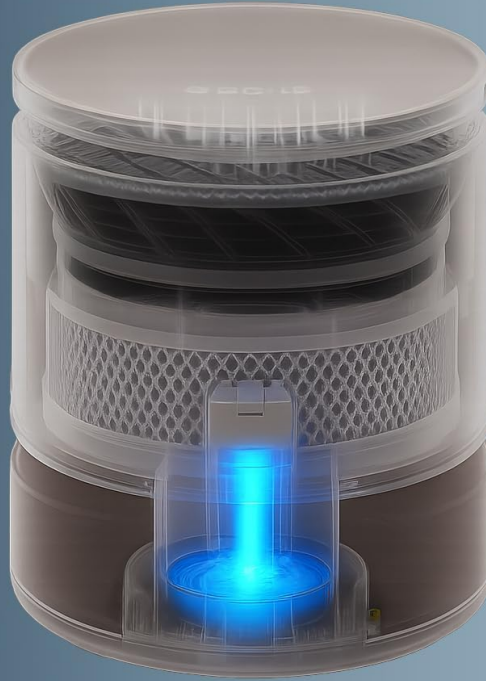
Exploded view of the humidifier showing the 'Wet & Dry Separate Structure' with the humidifying filter and water tank clearly separated.

4.3 UV Lamp

The integrated UV lamp in the pump helps suppress bacterial growth in the water, contributing to a clean humidification environment. No user maintenance is typically required for the UV lamp itself.

水の細菌を抑制する構造^{*5}

ポンプ内のUVライトが細菌の繁殖リスクを抑制^{*5}し、
清潔な加湿環境の維持に貢献します。



※画像はイメージです。実際の商品とは異なる場合があります。

Internal view of the humidifier highlighting the UV light in the pump, which suppresses bacterial growth in the water.

5. TROUBLESHOOTING

Problem	Possible Cause	Solution
Unit does not turn on.	No power supply.	Check if the power adapter is securely plugged into the unit and the wall outlet.
No mist or low humidification.	Water tank is empty or low.	Refill the water tank. The unit has an automatic shut-off when water is low.
Humidity reading seems inaccurate.	External factors or sensor calibration.	If using the Blueair app, you may be able to adjust the target humidity to compensate for minor discrepancies. Ensure the sensor is not obstructed.
Unusual noise during operation.	Unit not on a flat surface, or internal component issue.	Ensure the unit is on a stable, flat surface. If the noise persists, contact customer support.
Aroma not dispersing.	Scent pod empty or incorrectly inserted.	Add more aroma oil to the scent pod and ensure it is correctly inserted into its slot.

6. SPECIFICATIONS

- **Model Number:** 3331912000 (Product No: 113369)
- **Dimensions (Diameter x Height):** 245 mm x 330 mm
- **Unit Weight:** Approx. 2.8 kg
- **Humidification Method:** Evaporative
- **Applicable Area:** Prefabricated Western room ~11 tatami (18m²), Wooden Japanese room ~7 tatami (11m²)
- **Humidification Capacity:** Approx. 400 mL/h
- **Power Consumption:** 3.3 - 12.0 W
- **Operating Noise:** 20 - 40 dB(A)
- **Tank Capacity:** 3.8 L
- **Sensors:** Temperature/Humidity sensor, Water level sensor
- **Wi-Fi Support:** Yes (IEEE 802.11b/g/n, 2.4GHz band)
- **Operating Speed Settings:** Night, 1, 2, 3
- **Power Adapter Input:** 100 V AC, 50/60Hz, 0.5A
- **Power Adapter Output:** 12VDC, 1A
- **Filter Replacement Guideline:** Approx. 9-12 months (based on 10 hours/day usage)

7. WARRANTY INFORMATION

This Blueair DreamWell H38i Humidifier comes with a **3-year warranty** from the date of purchase. This warranty covers defects in materials and workmanship under normal use. Please retain your proof of purchase for warranty claims. The warranty does not cover damage resulting from misuse, accident, unauthorized modification, or normal wear and tear of consumable parts like filters.

8. SUPPORT

For further assistance, technical support, or to purchase replacement parts and filters, please visit the official Blueair website or contact Blueair customer service. Contact details can typically be found on the product packaging or the official brand website.

Online Support: Visit the Blueair official website for FAQs, troubleshooting guides, and product registration.

Customer Service: Refer to your regional Blueair contact information for phone or email support.