

[Manuals.plus](#) /

> [MOES](#) /

> MOES WiFi RF433 Smart Touch Wall Switch User Manual

MOES b38c87e2-a0bd-41a4-afc3-8affc48d249a

MOES WiFi RF433 Smart Touch Wall Switch User Manual

Model: b38c87e2-a0bd-41a4-afc3-8affc48d249a

1. PRODUCT OVERVIEW

The MOES WiFi RF433 Smart Touch Wall Switch is designed for convenient control of your lighting. This 2-gang switch operates without the need for neutral wiring, simplifying installation. It integrates with your smart home ecosystem through WiFi and RF433 frequency, offering control via the Smart Life/Tuya App, voice commands with Alexa and Google Home, and touch functionality. A 1A capacitance is required for operation and is included in the package.



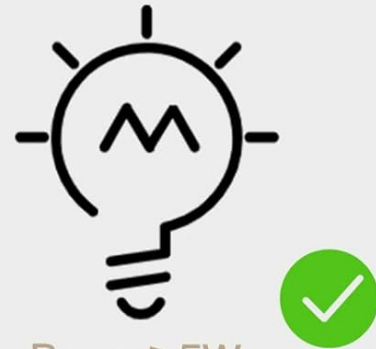
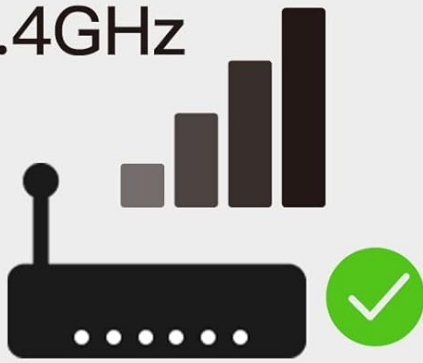
Figure 1.1: MOES WiFi RF433 Smart Touch Wall Switch and its retail packaging. The packaging highlights compatibility with Amazon Alexa and Google Assistant, and features like Wi-Fi + RF, Remote Control, Voice Control, and Family Sharing.

2. IMPORTANT SAFETY INFORMATION

- Always turn off power at the circuit breaker before installing, removing, or servicing the switch.
- Installation should be performed by a qualified electrician or in accordance with local electrical codes.
- This switch is designed for 1-way circuits only. Do not use as a 2-way switch.
- Ensure your Wi-Fi network is 2.4GHz. This device does not support 5GHz networks.
- Connect only to certified bulbs with a rated power of 5W or higher.
- A 1A capacitance is required for proper operation. This is included in the package. Note that capacitors may produce a faint humming sound during operation.
- Do not expose the device to excessive moisture or extreme temperatures.

ATTENTION

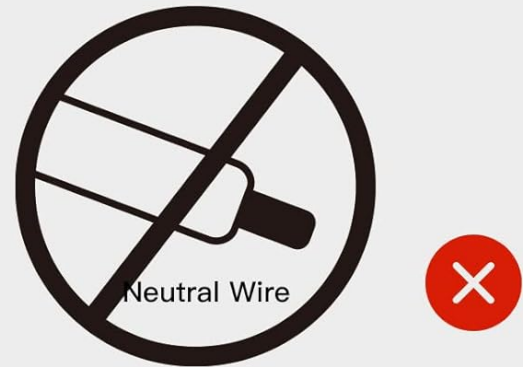
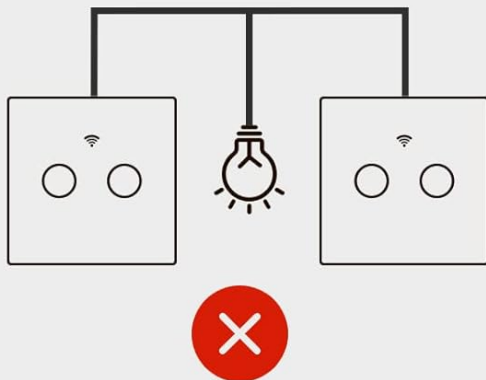
2.4GHz



Power \geq 5W

1. Only **2.4GHz Wi-Fi**,
Not 5GHz

2. Certified Bulbs with
Rated Power \geq 5W



3. **Not Use** as 2-Way
Switch

4. **No Neutral Required**

Note: Capacitors may make a faint humming sound when operating

Figure 2.1: Important considerations for the MOES Smart Switch. This image highlights that the switch only supports 2.4GHz Wi-Fi, requires certified bulbs with power \geq 5W, cannot be used as a 2-way switch, and does not require a neutral wire. A note about potential humming from capacitors is also included.

3. PACKAGE CONTENTS

- MOES WiFi RF433 Smart Touch Wall Switch (2 Gang)
- 1A Capacitance
- Mounting Screws
- User Manual (this document)

4. SPECIFICATIONS

Feature	Detail
---------	--------

Feature	Detail
Model Number	b38c87e2-a0bd-41a4-afc3-8affc48d249a
Dimensions	10.7 x 10.1 x 5 cm (Package); 86mm x 86mm x 25mm (Switch)
Weight	200 g (Package)
Color	White
Material	Glass
Wattage	5 watts (minimum bulb wattage)
Operation Mode	ON-OFF
Wireless Connectivity	Wi-Fi 2.4GHz (802.11 b/g/n), RF433MHz
Max. Load	600W/Gang
Operate Voltage	200-240VAC
Required Capacitor	1A (included)

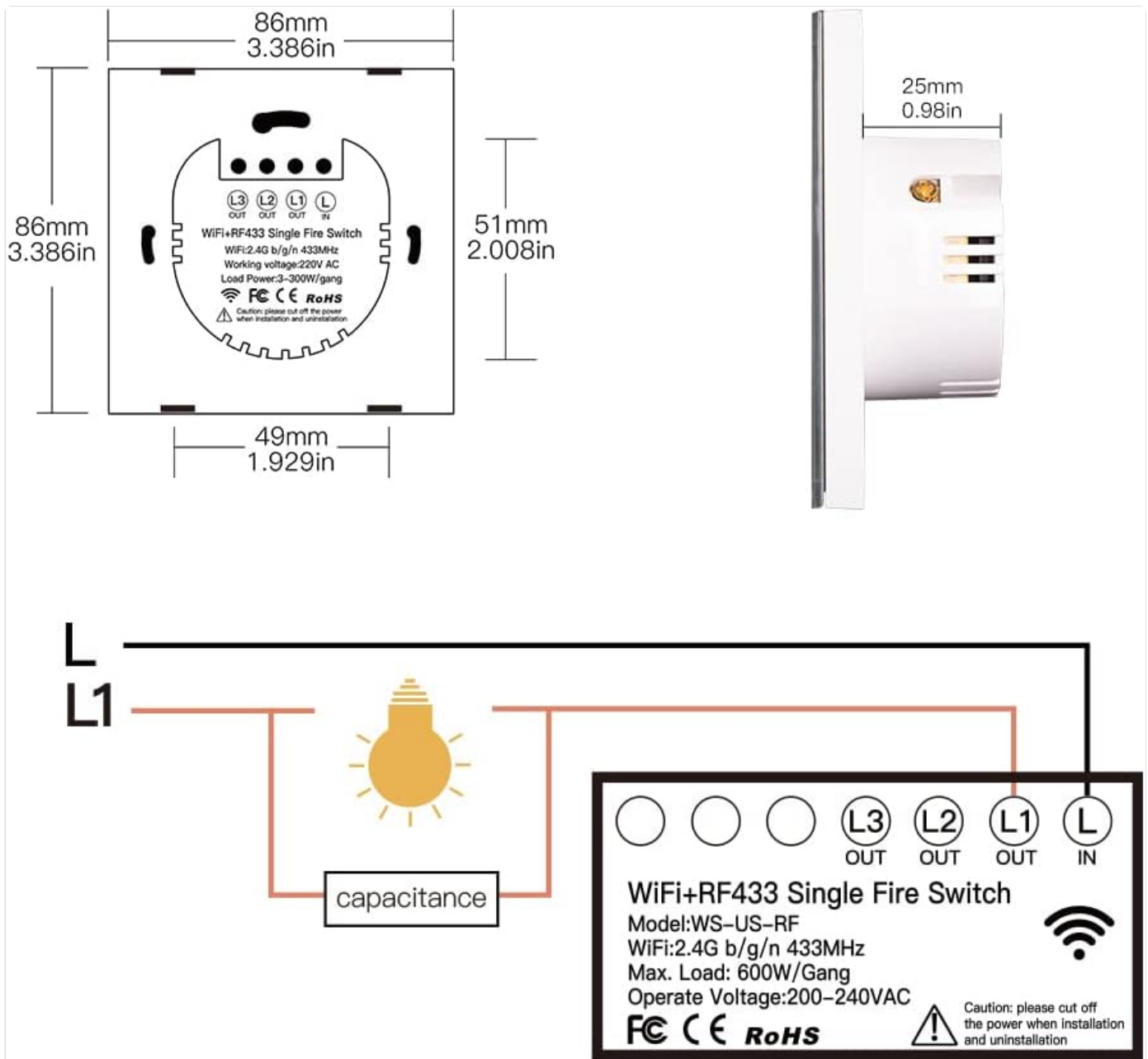


Figure 4.1: Detailed dimensions of the MOES Smart Switch (86mm x 86mm x 25mm) and its internal components. The image also includes a wiring diagram showing the connection of the switch (L, L1, L2, L3, OUT, IN) to a light fixture and the required capacitance.

5. INSTALLATION AND SETUP

5.1. Wiring Instructions

1. **Turn off Power:** Before starting, ensure the power to the circuit is completely off at the main circuit breaker.
2. **Identify Wires:** This switch requires Live (L) and Load (L1, L2, L3 for each gang) wires. No neutral wire is needed.
3. **Connect Capacitance:** The included 1A capacitance must be connected in parallel with the light fixture. Refer to Figure 4.1 for a visual guide.
4. **Wire the Switch:** Connect the Live wire to the 'L' terminal on the switch. Connect the load wire(s) from your light fixture(s) to the corresponding 'L1', 'L2', or 'L3' terminals.
5. **Mount the Switch:** Secure the switch into the wall box using the provided screws.
6. **Restore Power:** Once installation is complete, turn the power back on at the circuit breaker.

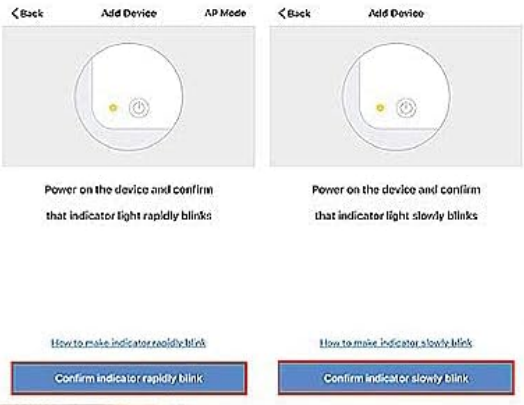
5.2. Pairing Mode (App Connection)

The MOES Smart Switch features an updated pairing mode for quick and easy connection via the Smart Life/Tuya App.

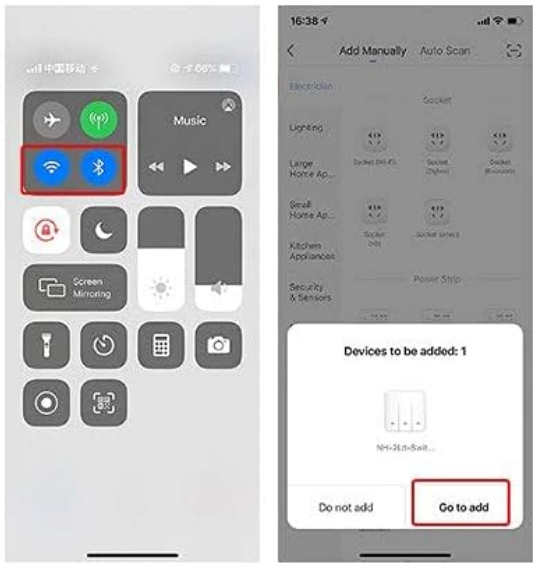
1. **Download App:** Download the "Smart Life" or "Tuya Smart" app from your smartphone's app store (available on iOS and Android).
2. **Register/Login:** Open the app and register for a new account or log in if you already have one.
3. **Enter Pairing Mode:** Power on the switch. The indicator light should blink rapidly. If not, press and hold one of the touch buttons for 5-10 seconds until it blinks rapidly.
4. **Add Device:** In the app, tap the "+" icon to add a new device. The app should automatically discover the switch via Wi-Fi and Bluetooth.
5. **Confirm Connection:** Follow the on-screen prompts to confirm the device and connect it to your 2.4GHz Wi-Fi network.
6. **Rename Device:** Once connected, you can rename the switch for easier control (e.g., "Living Room Light").


Update1: New Pairing Mode with Simple Operations

Others



Ours





So disgusting!

Why fails to connect again!

I am crazy about the complex operations!

Who can help me?

- ✓ 1. With WiFi+Bluetooth connected for automatic identification and easy configuration.
- ✓ 2. No more need to do so many complicated steps for pairing.
- ✓ 3. Quick and easy connection within 8 seconds.

Figure 5.1: Comparison of old vs. new pairing modes. The new mode (right side) demonstrates automatic identification and easy configuration via Wi-Fi and Bluetooth, simplifying the connection process within the Smart Life/Tuya app.

6. OPERATING INSTRUCTIONS

6.1. Control Methods

- **Touch Control:** Directly tap the touch panel on the switch to turn lights ON/OFF.
- **App Control:** Use the Smart Life/Tuya app on your smartphone to control the switch from anywhere.
- **Voice Control:** Integrate with Amazon Alexa or Google Home for hands-free voice commands (e.g., "Alexa, turn off the light").
- **RF433 Remote Control:** The switch supports RF433 frequency remote control (remote not included). This allows for an additional layer of control independent of Wi-Fi.



Figure 6.1: Depiction of various control methods for the MOES Smart Switch, including RF433 Remote Control, Hands-free Voice Control (Alexa), Smart Life/Tuya App Remote Control, and direct Touch Control on the switch panel.

6.2. App Features

- **Relay Status:** Configure the switch to remember its last ON/OFF status after a power outage. This setting can be found in the app under "relay status".
- **Backlight Switch:** Turn the LED backlight on the switch ON or OFF via the app. This is useful for preventing light disturbance during sleep.

- **Timers & Schedules:** Set up custom timers, schedules, and countdowns (e.g., 1/5/30 min, 1 hour) to automate your lighting.
- **Device Sharing:** Share control of the smart switch with family members or friends through the app.

Update2:New ON/OFF Relay Status in App

More personalized settings as ON/OFF/Remember last status when power off.

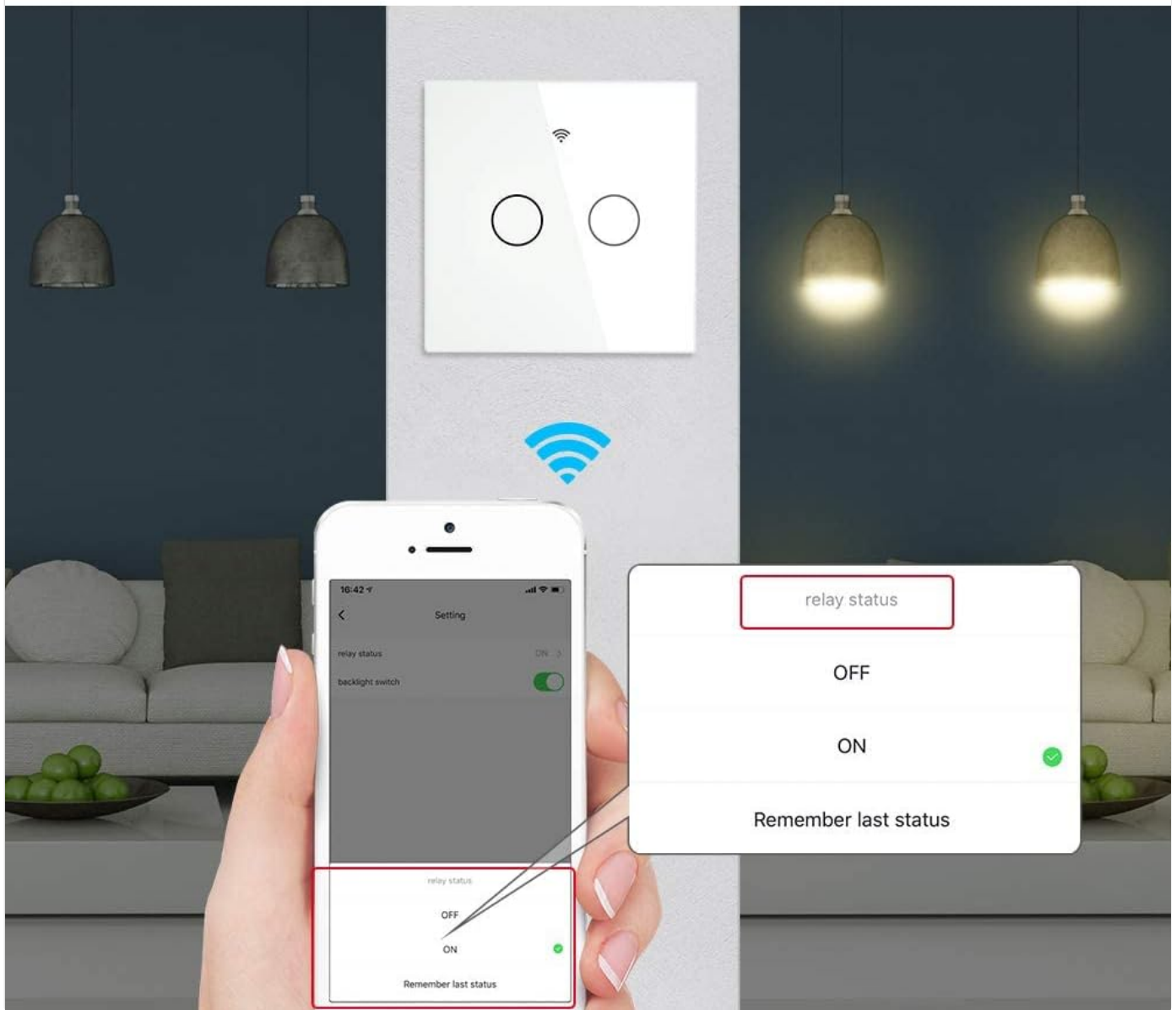


Figure 6.2: Screenshot from the Smart Life/Tuya app showing the 'relay status' setting. Users can choose to have the switch remember the last status (ON/OFF) when power is restored after an outage.

Update3:Backlight Switch with ON/OFF Optional No influences on sleep.

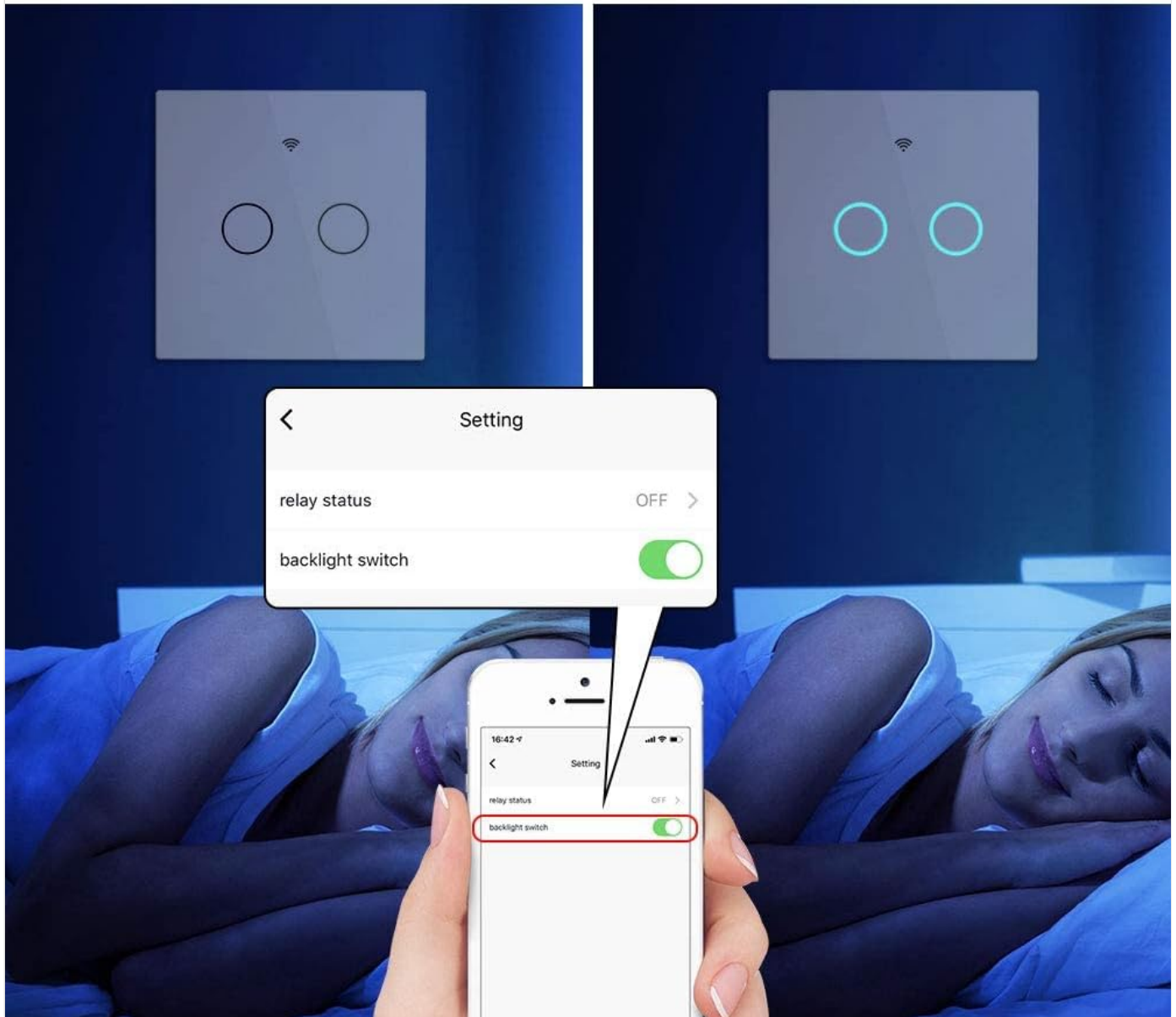


Figure 6.3: Screenshot from the Smart Life/Tuya app demonstrating the 'backlight switch' setting. This feature allows users to turn off the switch's LED backlight, which can be beneficial for undisturbed sleep.

7. MAINTENANCE

- Clean the glass panel with a soft, dry cloth. Avoid abrasive cleaners or solvents.
- Ensure the switch is not exposed to direct water spray or excessive humidity.
- Periodically check for any loose wiring connections (with power off).

8. TROUBLESHOOTING

Problem	Possible Cause	Solution
Switch not connecting to Wi-Fi/App.	Incorrect Wi-Fi frequency (5GHz), weak signal, incorrect pairing mode.	Ensure your Wi-Fi is 2.4GHz. Move the switch closer to the router. Re-enter pairing mode by holding a button until the indicator blinks rapidly.

Problem	Possible Cause	Solution
Light flickers or does not turn off completely.	Capacitance not installed or incorrectly installed, bulb wattage too low.	Verify the 1A capacitance is correctly installed in parallel with the light fixture. Ensure bulbs are certified and have a wattage of 5W or higher.
Faint humming sound from the capacitor.	Normal operation characteristic.	This is a known characteristic of some capacitors and is generally not a fault. If the humming is excessively loud or accompanied by other issues, contact support.
Voice control not working.	Incorrect integration with Alexa/Google Home, device offline.	Ensure the switch is online in the Smart Life/Tuya app. Re-link the Smart Life/Tuya skill in your Alexa or Google Home app. Check voice commands.

9. WARRANTY AND SUPPORT

The MOES WiFi RF433 Smart Touch Wall Switch comes with a comprehensive **2-year warranty** from the date of purchase, covering manufacturing defects and malfunctions under normal use. Additionally, a **60-day money-back guarantee** is offered for your complete satisfaction.

For technical support, warranty claims, or any inquiries, please contact the seller "Moes House" or the manufacturer "WENZHOU NOVA NEW ENERGY CO.,LTD" through your purchase platform or their official contact channels.