

Arcchio 4251096582161

Arcchio 'Bucket' Ceiling Light User Manual

Model: 4251096582161

1. INTRODUCTION

The Arcchio 'Bucket' Ceiling Light is a modern, cylindrical fixture designed to provide focused, glare-free illumination. Its minimalist design integrates seamlessly into various interior styles, including residential and commercial spaces. This manual provides essential information for the safe installation, operation, and maintenance of your new ceiling light.

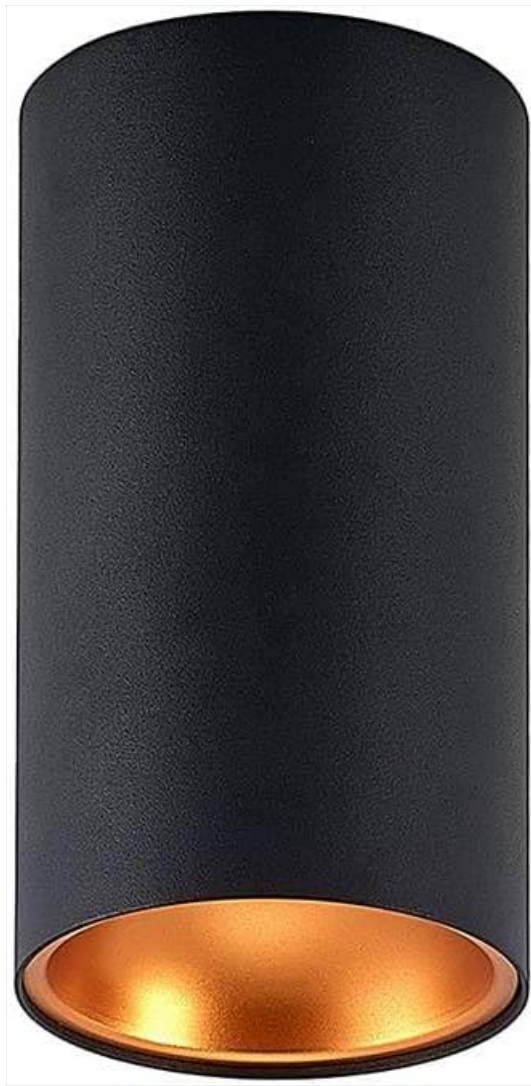


Image 1.1: The Arcchio 'Bucket' Ceiling Light, featuring a sleek black exterior and a warm gold interior reflector.

2. SAFETY INFORMATION

Please read all safety instructions carefully before installation and operation. Failure to follow these instructions may result in electric shock, fire, or personal injury.

- **Disconnect Power:** Always ensure the main power supply is switched off at the circuit breaker before performing any installation, maintenance, or bulb replacement.
- **Qualified Electrician:** Installation should be performed by a qualified electrician or competent person to ensure compliance with local electrical codes and safety standards.
- **Indoor Use Only:** This fixture has an IP20 rating, indicating it is protected against solid objects larger than 12.5mm but has no protection against water. It is suitable for dry indoor locations only.
- **Voltage:** Operate only with the specified voltage (230V).
- **Bulb Type:** Use only GU10 bulbs with a maximum wattage of 50W.
- **Heat:** Light sources can become hot. Allow bulbs to cool before handling.

3. PACKAGE CONTENTS

Verify that all components are present before beginning installation:

- Arcchio 'Bucket' Ceiling Light Fixture
- Mounting Bracket

- Mounting Hardware (screws, wall plugs)
- Instruction Manual

Note: GU10 bulb is not included and must be purchased separately.

4. SETUP AND INSTALLATION

Tools Required: Screwdriver, drill, pencil, wire strippers, voltage tester.

1. **Turn Off Power:** Locate the circuit breaker for the installation area and switch off the power supply. Verify power is off using a voltage tester.
2. **Prepare Mounting Surface:** Position the mounting bracket against the ceiling at the desired installation point. Mark the drilling locations with a pencil.
3. **Drill Holes:** Drill holes at the marked locations. Insert appropriate wall plugs if necessary.
4. **Attach Mounting Bracket:** Secure the mounting bracket to the ceiling using the provided screws.
5. **Wire Connections:** Connect the electrical wires from the ceiling to the terminal block inside the light fixture. Ensure correct connections: Live (L), Neutral (N), and Earth (E). Double-check all connections for security.

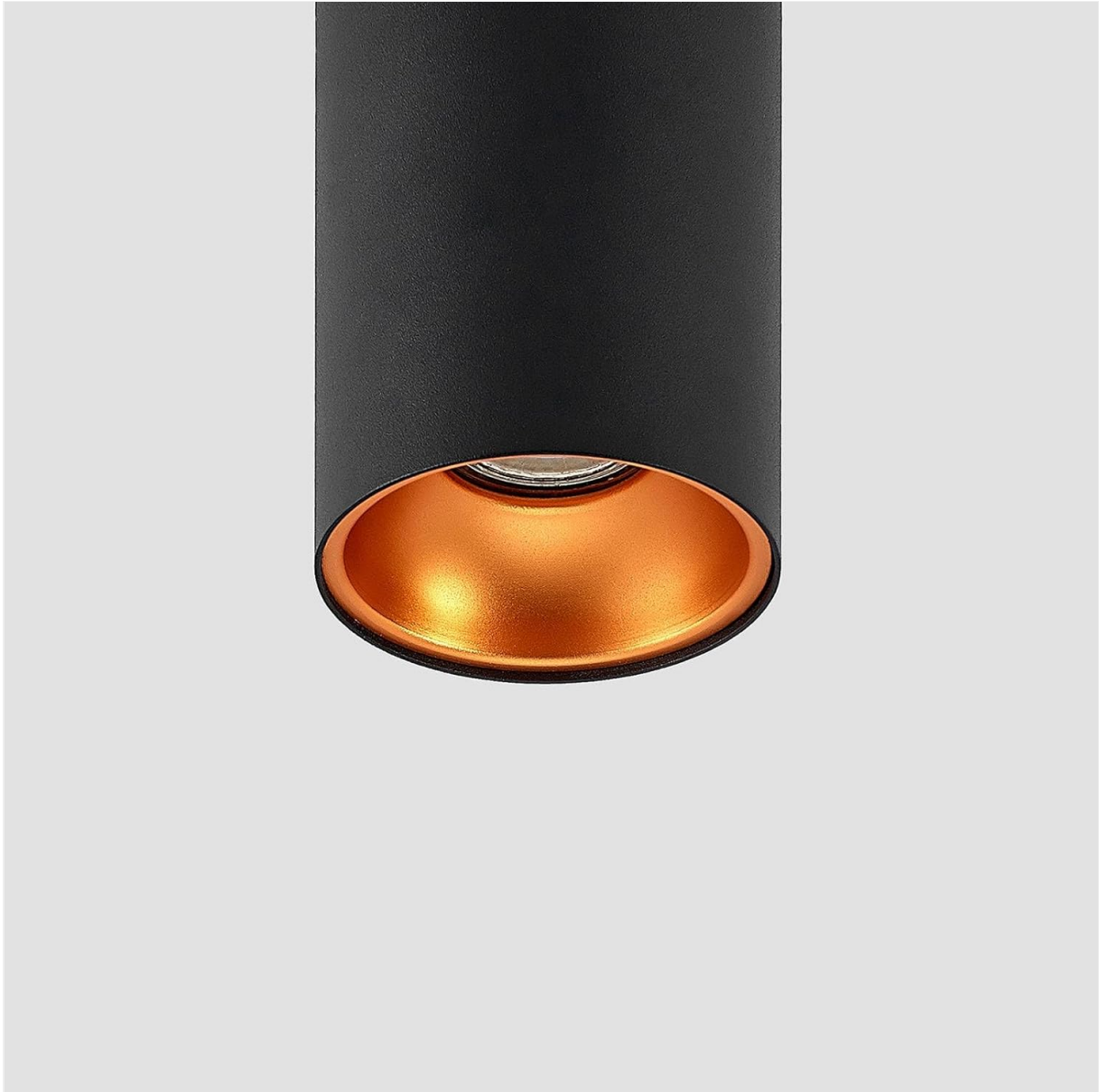


Image 4.1: Underside view of the light fixture, illustrating the internal wiring terminal block and the separate mounting

bracket.

6. **Secure Fixture:** Carefully align the light fixture with the mounting bracket and secure it in place using the provided screws.
7. **Install GU10 Bulb:** Insert a GU10 bulb (max 50W) into the socket by pushing it in and twisting clockwise until it locks into place.
8. **Restore Power:** Once installation is complete and all connections are secure, restore power at the circuit breaker.



Image 4.2: The Arcchio 'Bucket' Ceiling Light installed on a ceiling, providing downward illumination in a hallway.

5. OPERATING INSTRUCTIONS

The Arcchio 'Bucket' Ceiling Light is operated via a standard wall switch connected to its electrical circuit.

- **Turning On/Off:** Flip the wall switch to turn the light on or off.
- **Dimming Functionality:** If a dimmable GU10 bulb and a compatible wall dimmer (not included) are installed, the brightness of the luminaire can be adjusted using the dimmer switch.

6. MAINTENANCE

Regular maintenance ensures the longevity and optimal performance of your ceiling light.

- **Cleaning:** Disconnect power before cleaning. Use a soft, dry cloth to wipe the exterior of the fixture. Do not use abrasive cleaners, solvents, or liquids, as these may damage the finish.
- **Bulb Replacement:**
 - a. Turn off the power supply at the circuit breaker.
 - b. Allow the existing GU10 bulb to cool completely.
 - c. Gently push the bulb upwards and twist counter-clockwise to remove it from the socket.
 - d. Insert a new GU10 bulb (max 50W) by pushing it in and twisting clockwise until it is securely locked.
 - e. Restore power at the circuit breaker.



Image 6.1: Close-up view of the light's interior, highlighting the GU10 bulb socket for easy replacement.

7. TROUBLESHOOTING

If you encounter issues with your Arcchio 'Bucket' Ceiling Light, refer to the following common problems and solutions:

Problem	Possible Cause	Solution
---------	----------------	----------

Problem	Possible Cause	Solution
Light does not turn on.	No power supply, faulty bulb, incorrect wiring.	Check circuit breaker. Replace bulb. Verify wiring connections (ensure power is off).
Light flickers.	Loose bulb, incompatible dimmer, faulty bulb.	Ensure bulb is securely seated. Use a dimmable GU10 bulb with a compatible dimmer. Replace bulb.
Light is too dim/bright.	Incorrect bulb wattage, dimmer setting.	Ensure bulb wattage is appropriate. Adjust dimmer setting if applicable.

8. SPECIFICATIONS

Detailed technical specifications for the Arcchio 'Bucket' Ceiling Light:

Feature	Detail
Brand	Arcchio
Model Number	4251096582161
Product Dimensions	9.7 x 9.7 x 18 cm (Diameter x Length x Height)
Style	Modern
Colour	Black, Gold
Material	Metal (Aluminium / Zinc)
Power Source	Corded Electric
Bulb Type	GU10 (1 x 50W Max)
Operating Voltage	230 Volts
IP Rating	IP20
Protection Class	I
EU Energy Efficiency Label	A++



Image 8.1: Dimensional drawing of the Arcchio 'Bucket' Ceiling Light, showing a height of 180mm and a diameter of 96mm.

9. WARRANTY AND SUPPORT

Arcchio products are manufactured to high-quality standards and come with a manufacturer's warranty. For specific warranty details, please refer to the documentation provided with your purchase or contact the retailer.

If you have any questions, require technical assistance, or need to report a product issue, please contact Arcchio customer support through your Amazon retail profile or the official Arcchio website. Please have your model number (4251096582161) and purchase date available when contacting support.