

Manuals.plus /

› Tefal /

› Tefal Pro Style Care Garment Steamer IT8490M0 User Manual

Tefal IT8490M0

Tefal Pro Style Care Garment Steamer IT8490M0 User Manual

Model: IT8490M0 | Brand: Tefal

1. INTRODUCTION

Thank you for choosing the Tefal Pro Style Care Garment Steamer. This manual provides essential information for the safe and efficient use of your appliance. Please read all instructions carefully before first use and keep this manual for future reference.

2. IMPORTANT SAFETY INSTRUCTIONS

When using electrical appliances, basic safety precautions should always be followed to reduce the risk of fire, electric shock, and injury to persons.

- Always ensure the voltage of your electrical outlet matches the voltage specified on the appliance's rating plate.
- Do not immerse the appliance, power cord, or plug in water or other liquids.
- Unplug the appliance from the power outlet when not in use, before filling or emptying the water tank, and before cleaning.
- Do not operate any appliance with a damaged cord or plug, or after the appliance malfunctions or has been damaged in any manner.
- Keep the steam head away from your body and hands during operation to avoid steam burns.
- Use the provided heat-protective glove when steaming to protect your hand.
- Never direct steam at people or pets.
- Only use distilled or demineralized water in the water tank to prevent mineral buildup and ensure optimal performance.
- Do not leave the appliance unattended while it is switched on.
- Keep out of reach of children.

3. PRODUCT COMPONENTS

Familiarize yourself with the parts of your Tefal Pro Style Care Garment Steamer:

- **Main Unit:** Contains the heating element and water reservoir.
- **Removable Water Tank:** For easy filling and emptying. Capacity: 1.3 Liters.
- **Flexible Steam Hose:** Connects the main unit to the steam head.
- **Steam Head:** Delivers steam to garments, with integrated steam controls.
- **Telescopic Pole:** Adjustable height for comfortable steaming.
- **Integrated Hanger:** For hanging garments during steaming.
- **Press & Steam Support:** Provides a flat surface for pressing garments.
- **Power Cord:** For connecting to an electrical outlet.

Included Accessories:

- **Fabric Brush:** Opens fabric weaves for better steam penetration, ideal for thicker fabrics.
- **Lint Pad:** Removes lint and hair from garments.
- **Heat-Protective Glove:** Protects your hand from steam.
- **Steam Bonnet with Mon Parfum:** Protects delicate fabrics and allows for fragrance diffusion.
- **Crease Attachment:** Helps create crisp creases.





Image 3.1: Overview of the Tefal Pro Style Care Garment Steamer with its main components.

+5 ACCESSORIES

LINT PAD + GLOVE + FABRIC BRUSH + STEAM BONNET WITH MON PARFUM + CREASE ATTACHEMENT

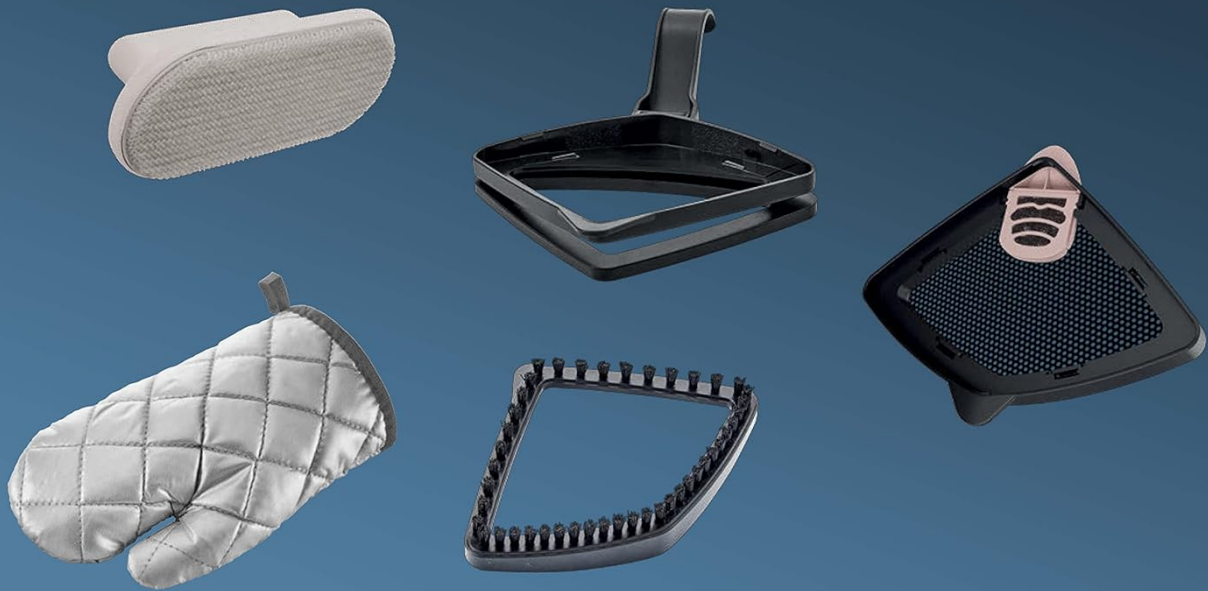


Image 3.2: The five included accessories: lint pad, glove, fabric brush, steam bonnet with Mon Parfum, and crease attachment.

4. ASSEMBLY AND SETUP

1. **Unpack:** Carefully remove all components from the packaging.
2. **Assemble the Pole:** Insert the telescopic pole into the main unit until it clicks into place. Extend the pole to your desired height.
3. **Attach the Hanger:** Secure the integrated hanger to the top of the telescopic pole.
4. **Install the Press & Steam Support:** Slide the Press & Steam support onto the pole.
5. **Connect the Steam Head:** Ensure the flexible steam hose is securely connected to the main unit and the steam head.
6. **Fill the Water Tank:** Remove the 1.3-liter water tank from the main unit. Open the cap, fill with distilled or demineralized water, and close the cap securely. Reinsert the water tank into the main unit.





Image 4.1: Detaching the water tank for filling. The tank has a capacity of 1.3 liters.

5. OPERATING YOUR GARMENT STEAMER

1. **Power On:** Plug the power cord into a suitable electrical outlet. Press the power button on the main unit. The appliance will begin heating up.
2. **Heat-Up Time:** The steamer has a fast heat-up time of approximately 45 seconds. The indicator light will stop flashing when it's ready to use.
3. **Select Steam Level:** Use the 5 steam control settings located on the steam head handle to adjust the steam output according to the fabric type. Start with a lower setting for delicate fabrics and increase for heavier materials.
4. **Steaming Technique:** Hang the garment on the integrated hanger. Hold the steam head close to the fabric, moving it up and down. For best results, gently pull the fabric taut with your free hand (protected by the glove).
5. **Using Accessories:**
 - **Fabric Brush:** Attach for thicker fabrics like coats or upholstery to help steam penetrate deeper.
 - **Lint Pad:** Use to remove lint and pet hair while steaming.
 - **Steam Bonnet with Mon Parfum:** Place a fragrance capsule into the Mon Parfum attachment and secure the bonnet over the steam head. This protects delicate fabrics and infuses them with your chosen scent.
 - **Crease Attachment:** Use to create sharp creases on trousers or shirts.
6. **Automatic Shut-off:** The appliance features an automatic shut-off function for safety and energy saving if left inactive for a period.



Image 5.1: Demonstrating the steaming process on a shirt, highlighting the 2000W power for effective wrinkle removal.

STEAM YOUR FAVOURITE FRAGRANCE



Image 5.2: Illustration of how to use the Mon Parfum attachment to diffuse your favorite fragrance while steaming.

6. CARE AND MAINTENANCE

Regular maintenance ensures the longevity and optimal performance of your garment steamer.

- **Emptying the Water Tank:** After each use, or when storing the appliance, empty any remaining water from the tank.
- **Descaling (Anti-Calc System):** The steamer is equipped with an anti-calc filtration system. Periodically, follow the descaling instructions in the full product manual to maintain steam performance. This typically involves rinsing the system to remove mineral deposits.
- **Cleaning the Steam Head:** Wipe the steam head with a damp cloth after use. Do not use abrasive cleaners.
- **Storage:** Store the appliance in a dry, safe place. Ensure the pole is retracted and the hose is neatly stored to prevent damage.

7. TROUBLESHOOTING

If you encounter issues with your garment steamer, refer to the following common problems and solutions:

Problem	Possible Cause	Solution
No steam or low steam output	Water tank empty; appliance not heated up; mineral buildup.	Refill water tank; wait for indicator light to stabilize; perform descaling procedure.
Water leakage from steam head	Appliance not fully heated; condensation; mineral buildup.	Wait for full heat-up; ensure hose is not kinked; perform descaling.
Appliance not turning on	Not plugged in; power outlet issue; automatic shut-off activated.	Check power connection; try a different outlet; press power button again.

If the problem persists after trying these solutions, please contact customer support.

8. TECHNICAL SPECIFICATIONS

Specification	Value
Brand Name	Tefal
Model Number	IT8490M0
Product Type Name	Garment Steamer
Color	Black
Electrical Power (Wattage)	2000 Watts
Steam Output	40 grams/minute
Steam Level Settings	5 levels
Heat-Up Time	45 seconds
Water Tank Capacity	1.3 Liters
Anti-Calc Function	Filtration system
Product Dimensions (Length x Width)	10cm x 5cm (Note: This dimension seems incomplete, refer to full product specifications for accurate measurements)
Item Weight	7.59 kilograms
Frequency	60 Hz
Main Material	Stainless Steel
Year of Manufacture	2019

9. WARRANTY INFORMATION

This product carries a manufacturer's warranty for 1 year from the date of purchase. You can contact the manufacturer or its agent for maintenance or Amazon for more details. Please retain your proof of purchase for warranty claims.

