

## Manuals+

[Q & A](#) | [Deep Search](#) | [Upload](#)

[manuals.plus](#) /

> [usogood](#) /

> [usogood TC50 Trail Camera User Manual](#)

## usogood TC50

# usogood TC50 Trail Camera User Manual

Model: TC50

## 1. INTRODUCTION

The usogood TC50 Trail Camera is designed for capturing high-quality images and videos of wildlife, as well as for home security and surveillance. Featuring advanced motion detection, night vision capabilities, and Wi-Fi connectivity for remote control via a mobile application, this camera is suitable for various outdoor monitoring needs.



Image: The usogood TC50 Trail Camera, showcasing its design and Wi-Fi connectivity feature with a smartphone.

## 2. PACKAGE CONTENTS

Verify that all items listed below are included in your package:

- usogood TC50 Trail Camera
- Remote Control (for Wi-Fi activation)
- Mounting Strap
- Mounting Bracket and Screws
- User Manual

*Note: SD card and 8 AA batteries are not included and must be purchased separately.*





## IP66 WATERPROOF

Waterproof and dustproof, keep working in harsh outdoor environment

Image: All components included in the usogood TC50 Trail Camera package.

### 3. SETUP

#### 3.1 Battery and SD Card Installation

1. Open the camera's housing.
2. Insert 8 AA batteries into the battery compartment, ensuring correct polarity.
3. Insert a compatible SD card (up to 128GB) into the SD card slot.
4. Close the camera's housing securely to maintain its waterproof seal.

#### 3.2 Mounting the Camera

The camera can be mounted using the provided strap or screws:

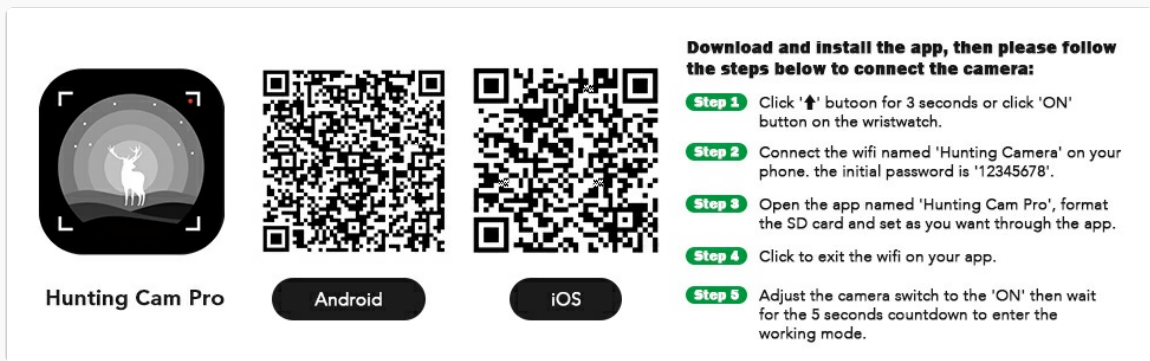
- **Strap Mounting:** Thread the mounting strap through the slots on the back of the camera and secure it around a tree or pole.
- **Screw-in Mounting:** Use the provided mounting bracket and screws to attach the camera to a flat surface.

#### 3.3 Connecting to the Mobile App (Hunting Cam Pro)

The usogood TC50 features built-in Wi-Fi for remote control and viewing via the 'Hunting Cam Pro' mobile

application. Follow these steps to connect:

1. **Download the App:** Scan the QR code below or search for 'Hunting Cam Pro' on your device's app store (Google Play for Android, Apple App Store for iOS).



**Hunting Cam Pro**

Android iOS

**Download and install the app, then please follow the steps below to connect the camera:**

- Step 1** Click '↑' button for 3 seconds or click 'ON' button on the wristwatch.
- Step 2** Connect the wifi named 'Hunting Camera' on your phone. the initial password is '12345678'.
- Step 3** Open the app named 'Hunting Cam Pro', format the SD card and set as you want through the app.
- Step 4** Click to exit the wifi on your app.
- Step 5** Adjust the camera switch to the 'ON' then wait for the 5 seconds countdown to enter the working mode.

Image: QR codes for downloading the Hunting Cam Pro app for Android and iOS devices.

Relevant links: [Android App Download](#), [iOS App Download](#)

2. **Activate Camera Wi-Fi:** Turn on the camera's Wi-Fi using the remote control or manually on the camera.
3. **Connect to Camera Wi-Fi:** On your phone, go to Wi-Fi settings and connect to the network named 'Hunting Camera'. The initial password is '12345678'.
4. **Open App and Connect:** Open the 'Hunting Cam Pro' app. You can now format the SD card, view live pictures and videos, and adjust camera parameters through the app.
5. **Exit Wi-Fi:** After use, exit the Wi-Fi connection in the app. The camera will then enter working mode after a 5-second countdown.

Your browser does not support the video tag.

Video: Instructions on how to connect the usogood TC50 Trail Camera to the mobile application via Wi-Fi.



# WiFi CONNECTION

Download the APP and Connect the Built-in WiFi to View Live Pictures and Videos



Image: The usogood TC50 Trail Camera demonstrating Wi-Fi connectivity with a smartphone for live viewing.

## 4. OPERATING MODES AND FEATURES

### 4.1 High Definition Imaging

The camera captures images at 24MP resolution and videos at 1296P with clear sound recording, providing detailed visuals for monitoring.

# UPGRADED **24MP/1296P** RESOLUTION

Show You Clear Details

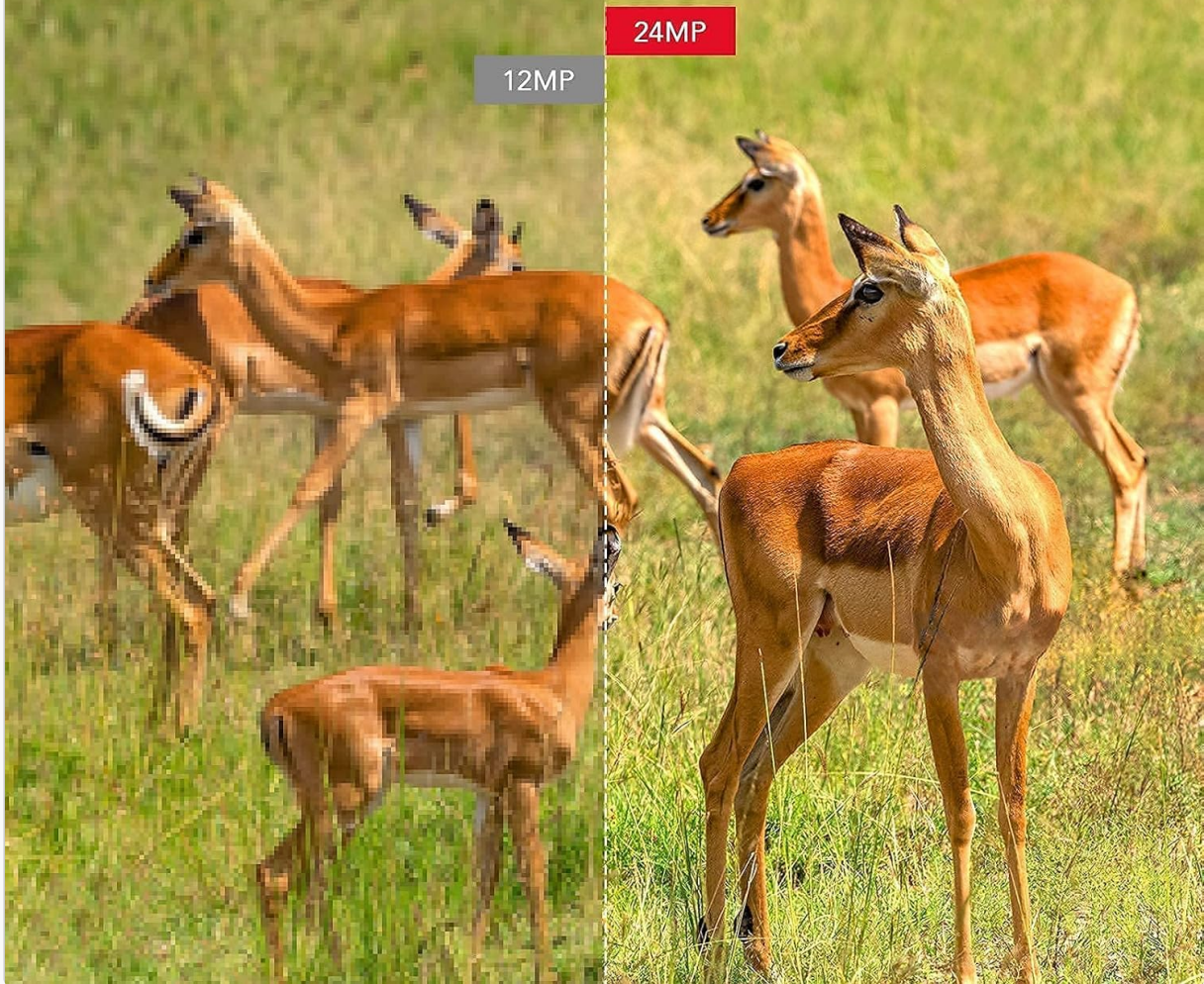


Image: Visual comparison highlighting the clarity of 24MP resolution captured by the camera.

## **4.2 Fast Trigger Speed**

With a 0.2-second trigger speed, the camera quickly captures dynamic movements, ensuring minimal delay in recording activity.



## **0.2s** LIGHTNING TRIGGER SPEED

Quickly Capture Dynamic Pictures, Saving  
Every Beautiful Moment



Image: The camera's fast 0.2-second trigger speed capturing a moving animal.

### **4.3 No-Glow Night Vision**

Equipped with 34Pcs 940nm invisible infrared LEDs, the camera provides clear black and white images and videos at night without emitting a visible flash, preventing disturbance to wildlife.

## **NO GLOW NIGHT VISION**

34Pcs 940nm LEDs, Night Vision Without Flash,  
Will Not Scare Off Animals

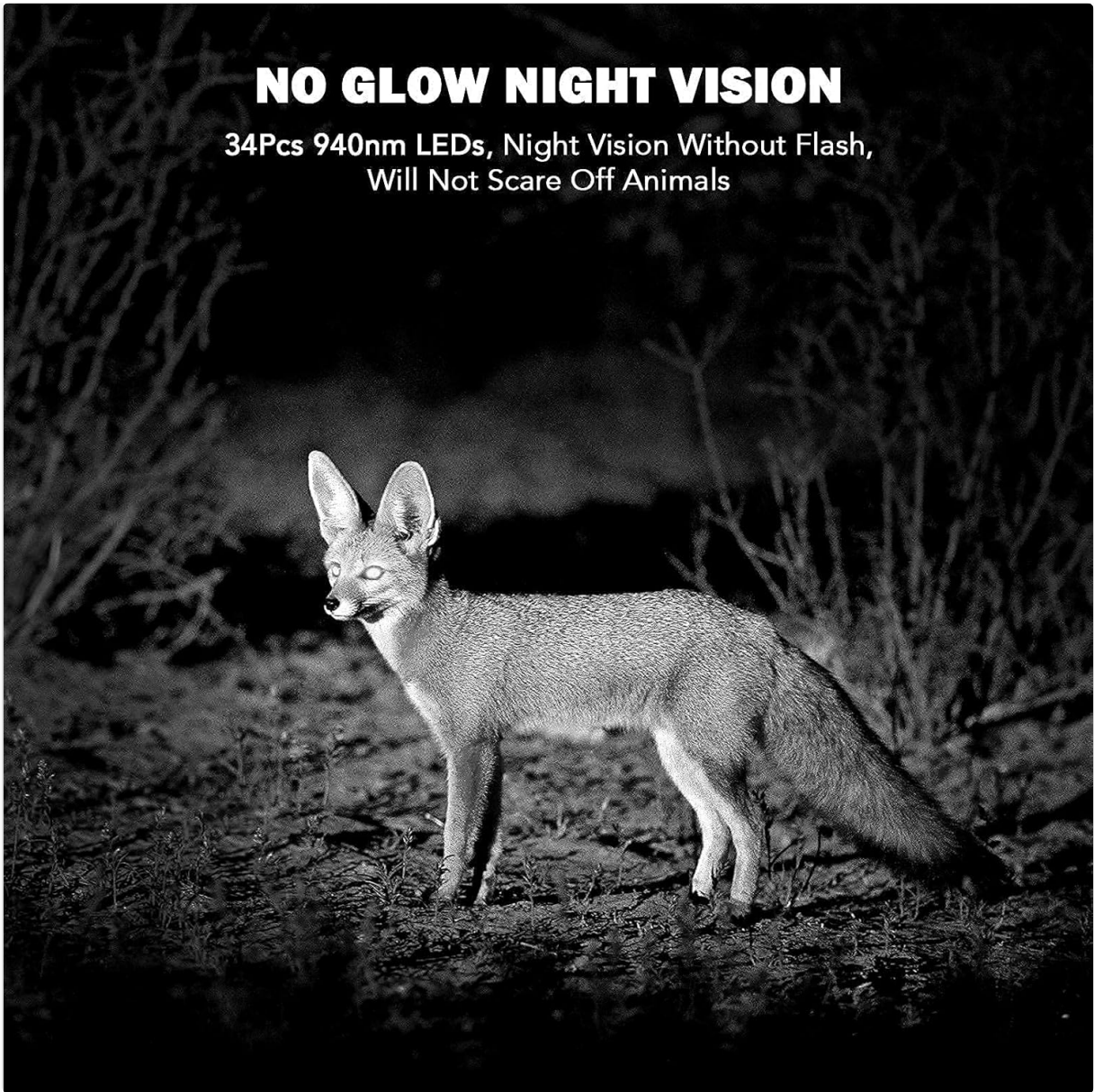


Image: A fox captured at night using the camera's no-glow infrared night vision.

### **4.4 Wide Angle Lens**

The 120° ultra-wide detection angle allows for a broad field of view, capturing more of the surrounding environment.





Image: The camera's 120-degree wide-angle lens capturing a group of deer.

#### **4.5 Time-Lapse Function**

Utilize the time-lapse function for extended monitoring of animal habits, plant growth, or project progress.

#### **4.6 Password Protection**

The camera can be password-protected to prevent unauthorized access to settings and captured data.

#### **4.7 Timestamp**

Recordings include a timestamp with Date, Temperature, and Timer information.

### **5. MAINTENANCE**

#### **5.1 Waterproof Design**

The camera features an IP66 waterproof rating, ensuring durability against dust, rain, and snow in various outdoor environments.



# MULTI-APPLICATION

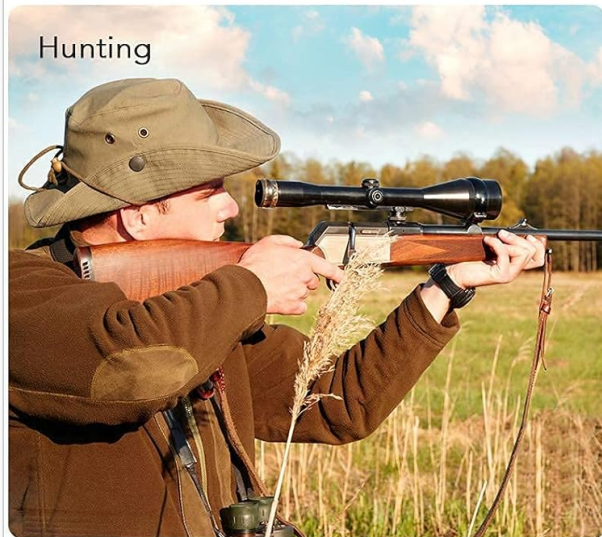


Image: The camera operating in rainy conditions, highlighting its IP66 waterproof capability.

## 5.2 General Care

- Keep the lens clean from dirt and debris.
- Ensure the battery compartment and SD card slot are sealed properly before outdoor use.
- Store the camera in a cool, dry place when not in use.

## 6. TROUBLESHOOTING

- **Camera not turning on:** Check battery installation and ensure batteries have sufficient charge.
- **Poor Wi-Fi connection:** Ensure the remote control has a clear line of sight to the camera. Wi-Fi range is up to 10m, but can be affected by environmental factors.
- **PIR (Passive Infrared) sensitivity issues:** Adjust PIR sensitivity settings in the app to adapt to different temperatures and weather conditions.
- **Short battery life:** Frequent Wi-Fi usage can drain batteries faster. Consider reducing Wi-Fi activation time if battery life is a concern.
- **SD card errors:** Ensure the SD card is properly inserted and formatted within the camera's app. Try a different SD card if issues persist.

## 7. SPECIFICATIONS



Feature	Detail
Model Name	TC50
Effective Still Resolution	24 MP
Video Capture Resolution	1296p
Trigger Speed	0.2s
Viewing Angle	120 Degrees
Night Vision Range	65 Feet
Water Resistance Level	IP66 Waterproof
Power Source	Battery Powered (8 AA batteries required)
Flash Memory Type	SD (up to 128GB)
Connectivity Protocol	Wi-Fi
Item Dimensions (L x W x H)	3.54 x 2.05 x 5.24 inches
Item Weight	1.3 pounds

## 8. WARRANTY AND SUPPORT

usogood provides a 2-year protection plan for repair services. Additionally, a 3-month return policy is offered for product quality assurance.

For technical support or warranty claims, please contact usogood customer service through the official channels provided at the time of purchase or on the usogood website.